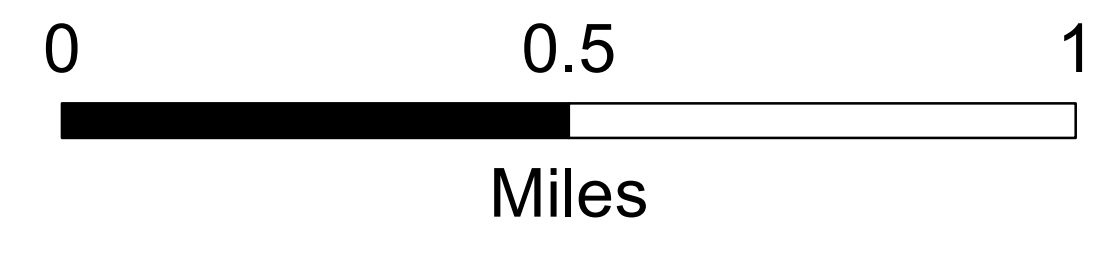
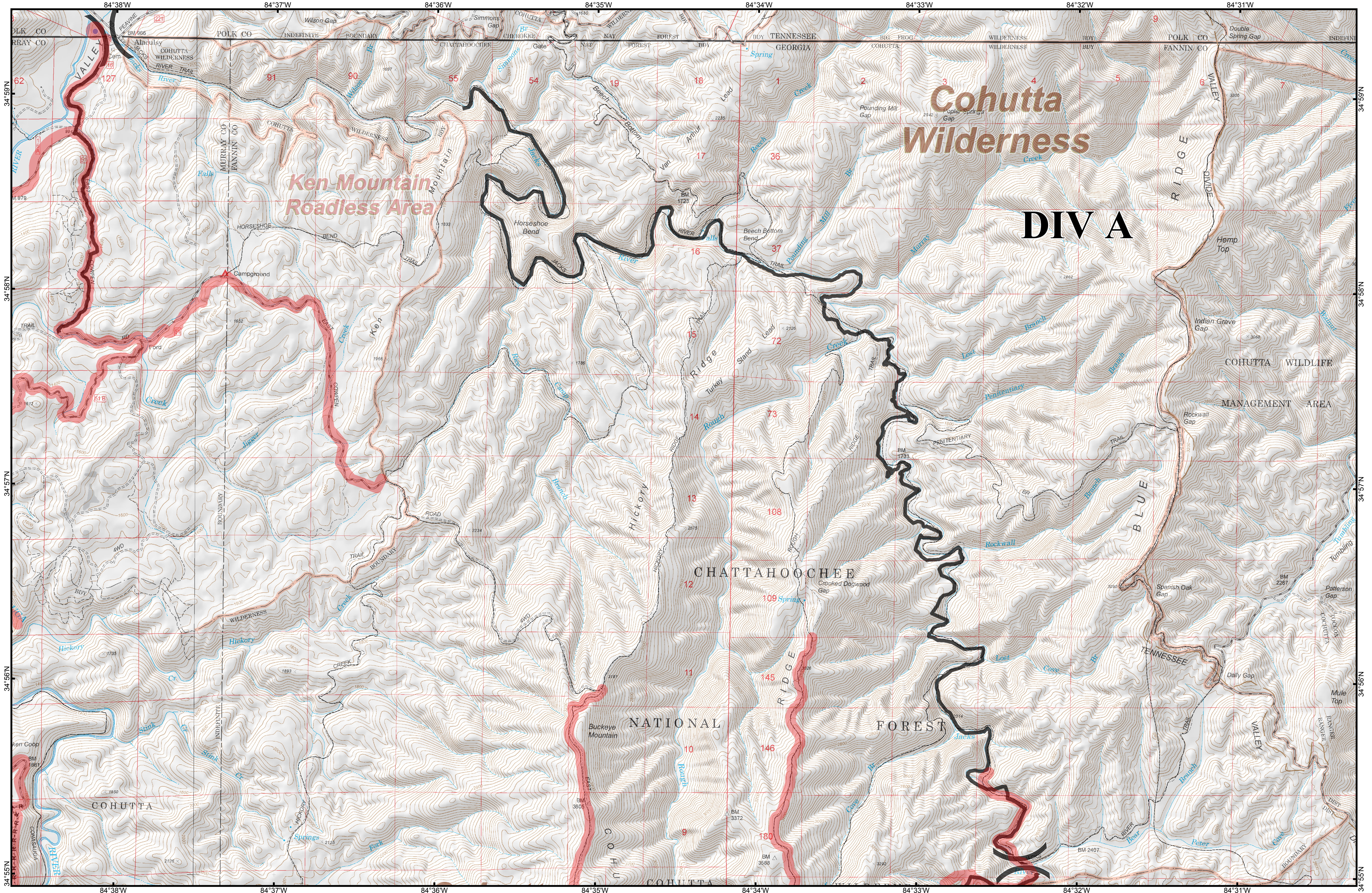


Rough Ridge Suppression Repair Div A



- | | | | | |
|-----------------------|-------------------------|----------------|-----------------------------|--------------------------------|
| ● Drop Point | ● Helispot | Ⓟ Pump | XXXXXX Completed Dozer Line | — Hand Line |
| ✈ Airstrip or Airport | ▣ Incident Command Post | Ⓡ Repeater | — Completed Line | R-R-R-R Road as Completed Line |
| ⊗ Fire Origin | ☒ Mobile Weather Unit | Ⓢ Staging Area | ⋯ Trail | |
| Ⓜ Water Source | | | | |

- Repair Status Categories**
- Completed
 - Identified for Repair
 - Ready for Inspection

