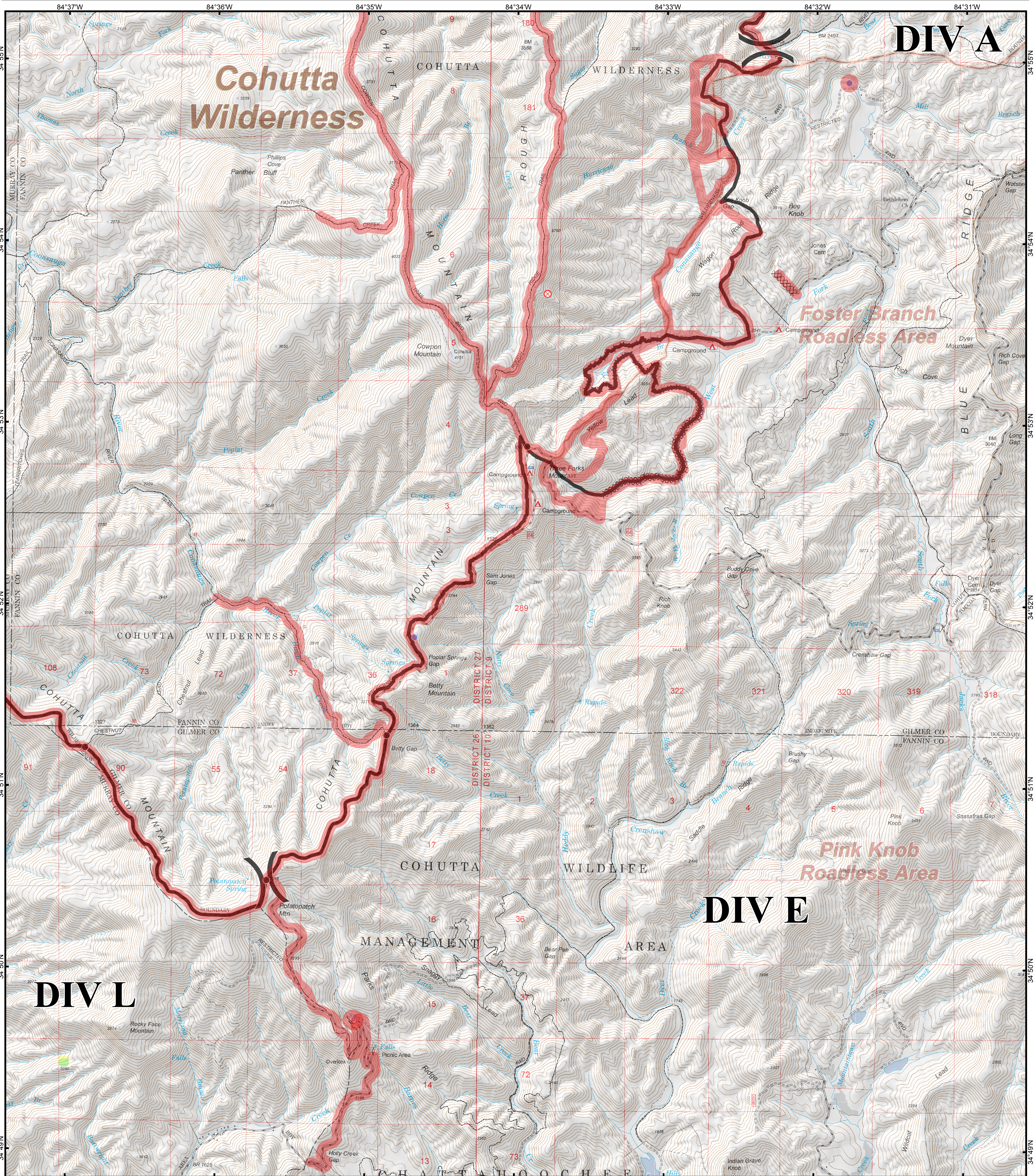


# Rough Ridge Suppression Repair Div E



- Drop Point
- ✈ Airstrip or Airport
- ⊗ Fire Origin
- Helispot
- ✈ Incident Command Post
- ☒ Mobile Weather Unit
- ⊕ Pump
- Ⓜ Repeater
- Ⓜ Staging Area
- Ⓜ Water Source

- Division Break
- Completed Dozer Line
- Completed Line
- Hand Line
- Road as Completed Line
- Trail

- Repair Status Categories**
- Completed
  - Identified for Repair
  - Ready for Inspection

