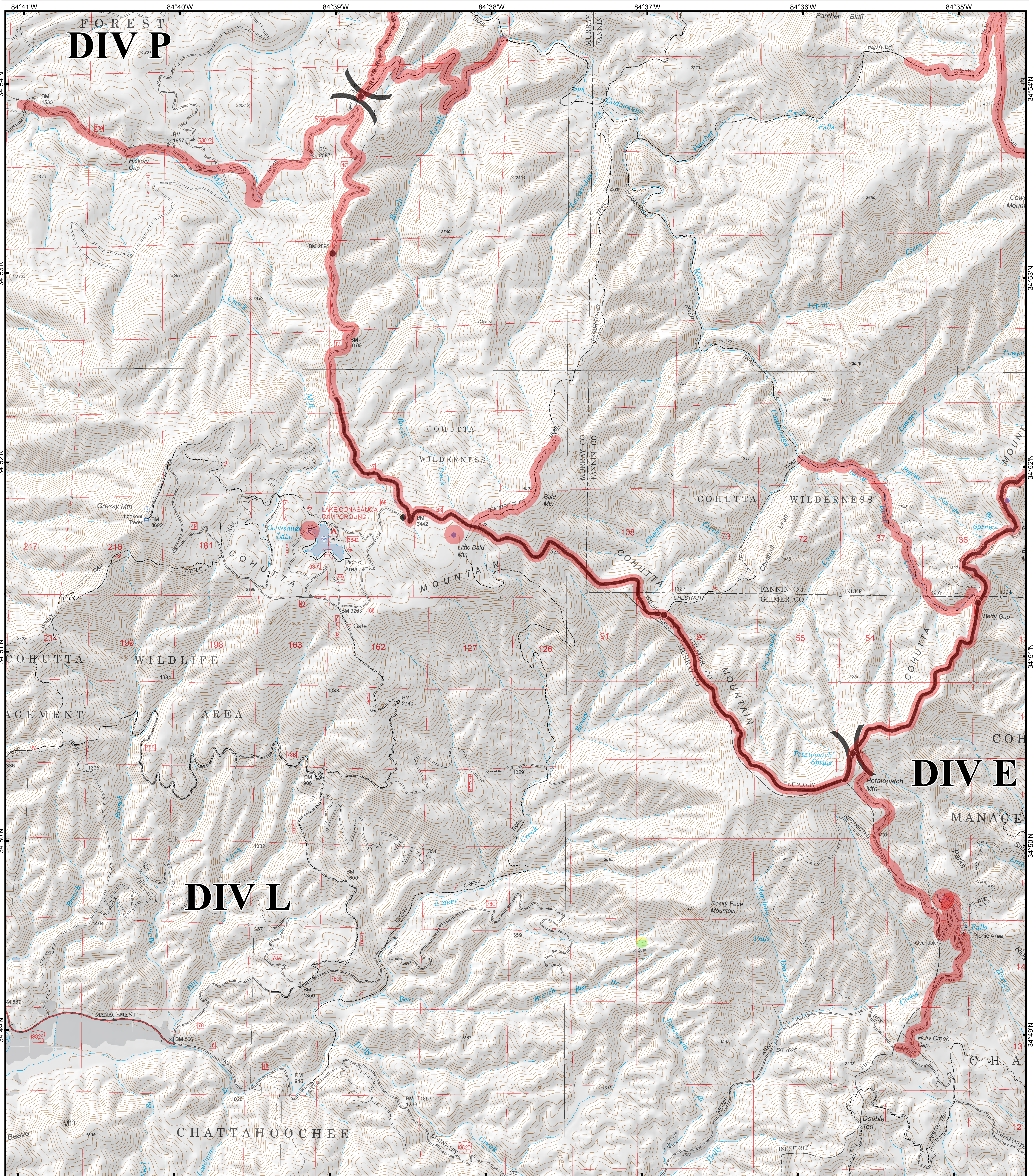


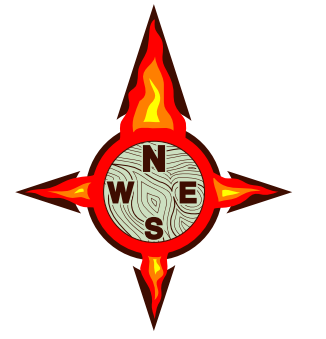
# Rough Ridge Suppression Repair Div L



- Drop Point
- ⊕ Airstrip or Airport
- ⊗ Fire Origin
- Helispot
- ⊠ Incident Command Post
- ⊠ Mobile Weather Unit
- ⊕ Pump
- ⊕ Repeater
- ⊕ Staging Area
- ⊕ Water Source

- Division Break**
- Completed Dozer Line
- Hand Line
- Completed Line
- Road as Completed Line
- Trail

- Repair Status Categories**
- Completed
  - Identified for Repair
  - Ready for Inspection



0 0.5  
 Miles