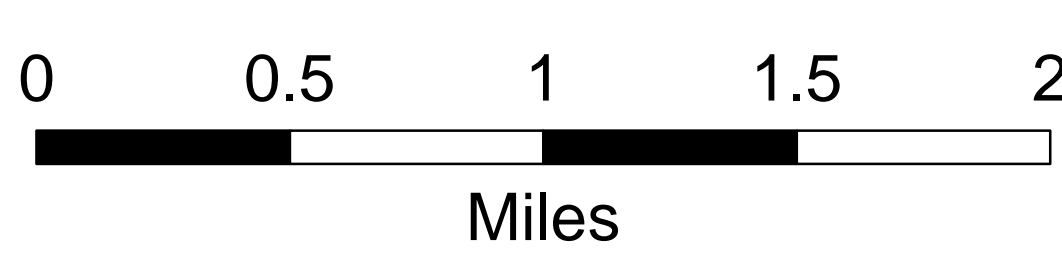
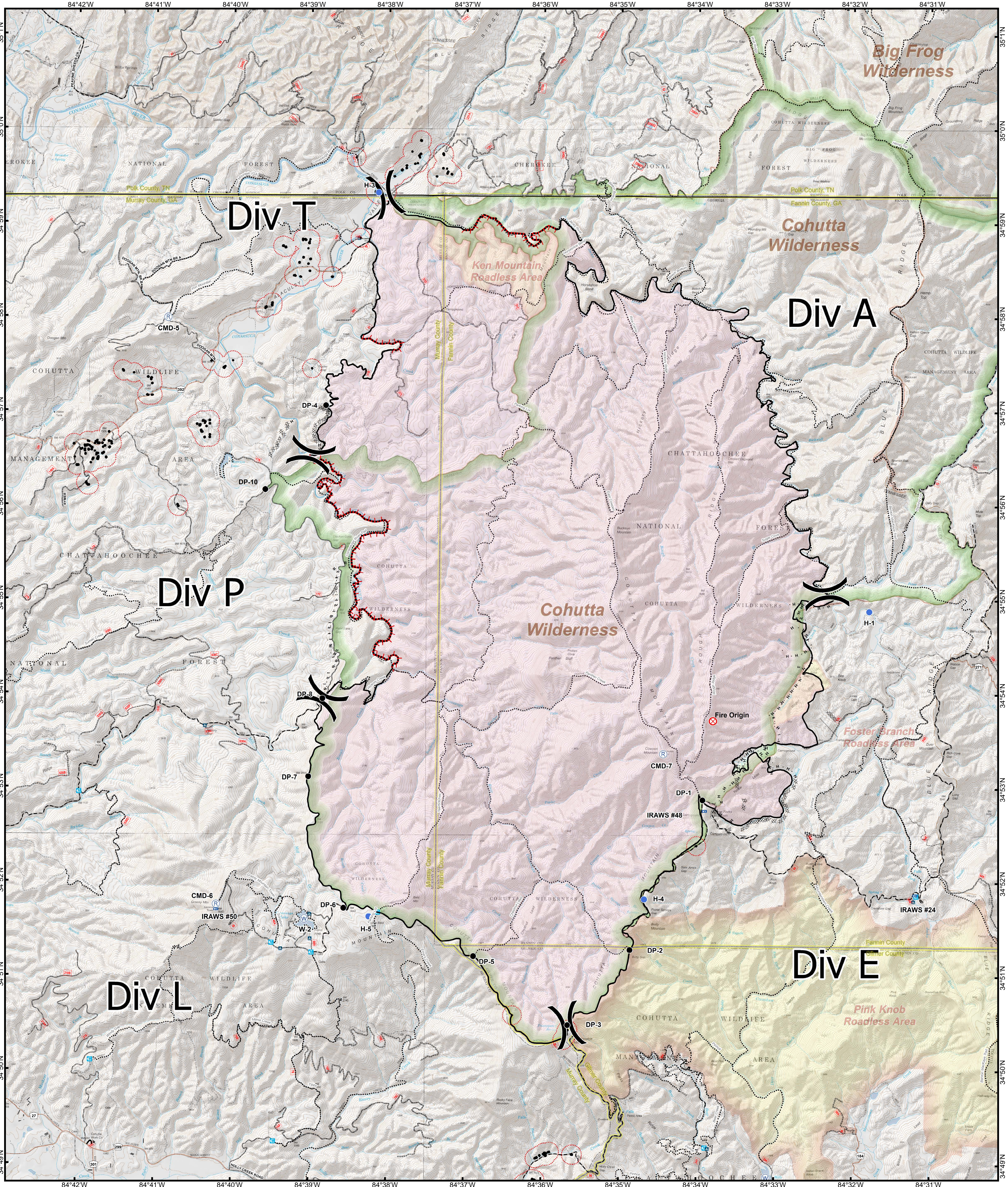


# Rough Ridge Operations



- |                         |                       |                          |                                     |
|-------------------------|-----------------------|--------------------------|-------------------------------------|
| ● Drop Point            | ⊕ Mobile Weather Unit | ⊘ Completed Dozer Line   | ■ Fire Polygon                      |
| ✈ Airstrip or Airport   | ⊖ Pump                | — Hand Line              | ▨ Structures - Digitized 11/09/2016 |
| ⊗ Fire Origin           | ⊙ Repeater            | — Road as Completed Line | ▨ Structures - 200 Yd Buffer        |
| ⊙ Helispot              | ⊙ Staging Area        | — Contained Line         | ⊙ Camping                           |
| ⊙ Incident Command Post | ⊙ Water Source        |                          | ⊙ Trailhead                         |
- Roads**
- 1 - BASIC CUSTODIAL CARE (CLOSED)
  - 2 - HIGH CLEARANCE VEHICLES
  - 3 - SUITABLE FOR PASSENGER CARS
  - 4 - MODERATE DEGREE OF USER COMFORT
  - 5 - HIGH DEGREE OF USER COMFORT
- ⋯ Trail  
 — State Boundary  
 — County Boundary  
 — Roadless Areas

