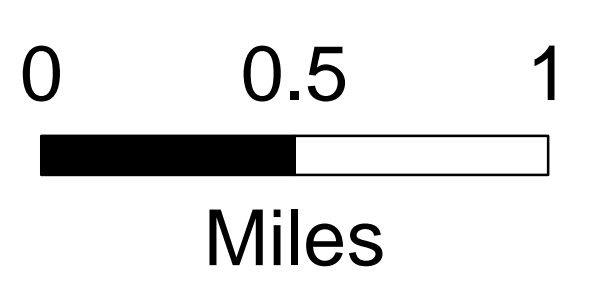
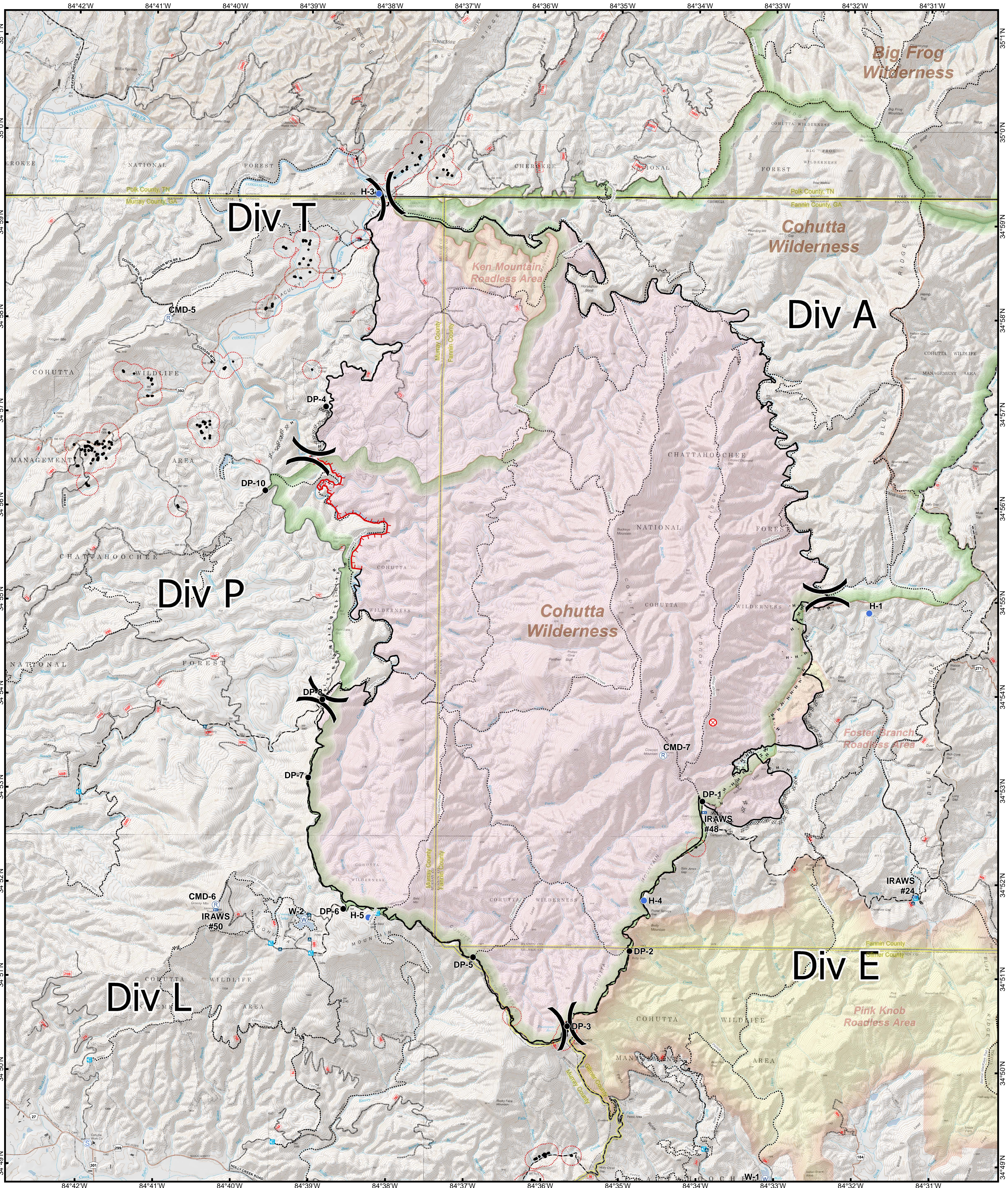


Rough Ridge Operations



- | | | | |
|-------------------------|-----------------------|--------------------------|-------------------------------------|
| ● Drop Point | ☒ Mobile Weather Unit | ⊘ Completed Dozer Line | ▭ Fire Polygon |
| ✈ Airstrip or Airport | Ⓟ Pump | ⚡ Uncontrolled Fire Edge | ▭ Structures - Digitized 11/09/2016 |
| ⊗ Fire Origin | Ⓡ Repeater | — Controlled Line | ▭ Structures - 200 Yd Buffer |
| Ⓡ Helispot | Ⓢ Staging Area | — Hand Line | ▭ Camping |
| Ⓡ Incident Command Post | Ⓦ Water Source | — Road as Completed Line | ▭ Trailhead |
- Roads**
- 1 - BASIC CUSTODIAL CARE (CLOSED)
 - 2 - HIGH CLEARANCE VEHICLES
 - 3 - SUITABLE FOR PASSENGER CARS
 - 4 - MODERATE DEGREE OF USER COMFORT
 - 5 - HIGH DEGREE OF USER COMFORT
- ⋯ Trail
 ▭ State Boundary
 ▭ County Boundary
 ▭ Roadless Areas

