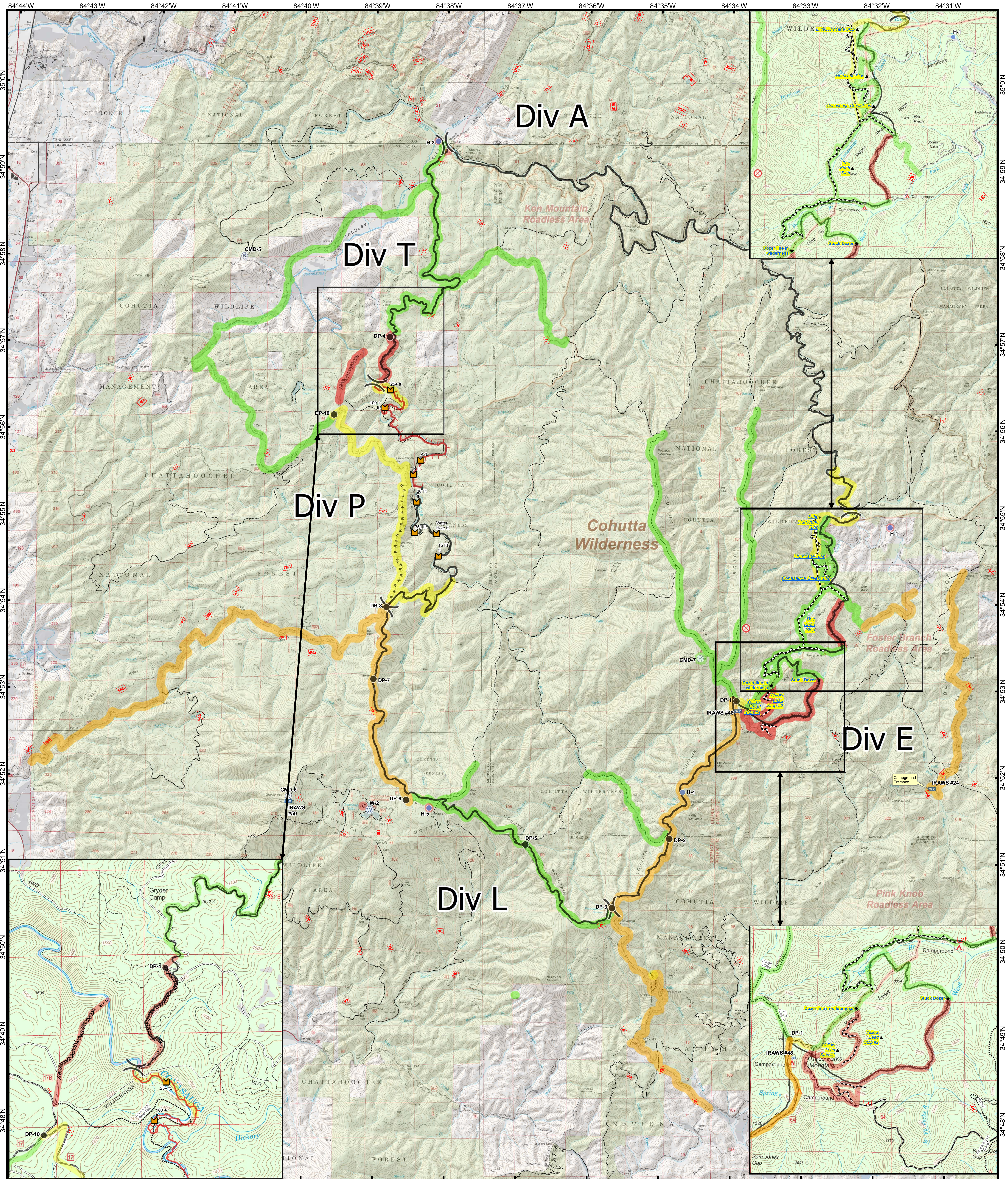


# Rough Ridge Suppression Repair



0 0.5 1  
 Miles  
 Road to Grade: 24.3 miles  
 Dozerline: 3.25 miles  
 Dozerline to seed: 4.7 acres

- |                       |                     |                        |
|-----------------------|---------------------|------------------------|
| Burned Railroad Ties  | Mobile Weather Unit | Completed Dozer Line   |
| Drop Point            | Pump                | Uncontrolled Fire Edge |
| Airstrip or Airport   | Repeater            | Controlled Line        |
| Fire Origin           | Staging Area        | Hand Line              |
| Helispot              | Water Source        | Road as Completed Line |
| Incident Command Post | Old Roadbed         | Trail                  |

- Roads**
- 1 - BASIC CUSTODIAL CARE (CLOSED)
  - 2 - HIGH CLEARANCE VEHICLES
  - 3 - SUITABLE FOR PASSENGER CARS
  - 4 - MODERATE DEGREE OF USER COMFORT
  - 5 - HIGH DEGREE OF USER COMFORT

- Rehab Status**
- Completed
  - Identified for Repair
  - Ready for Inspection
  - Road to Grade
  - Forest Service Land

