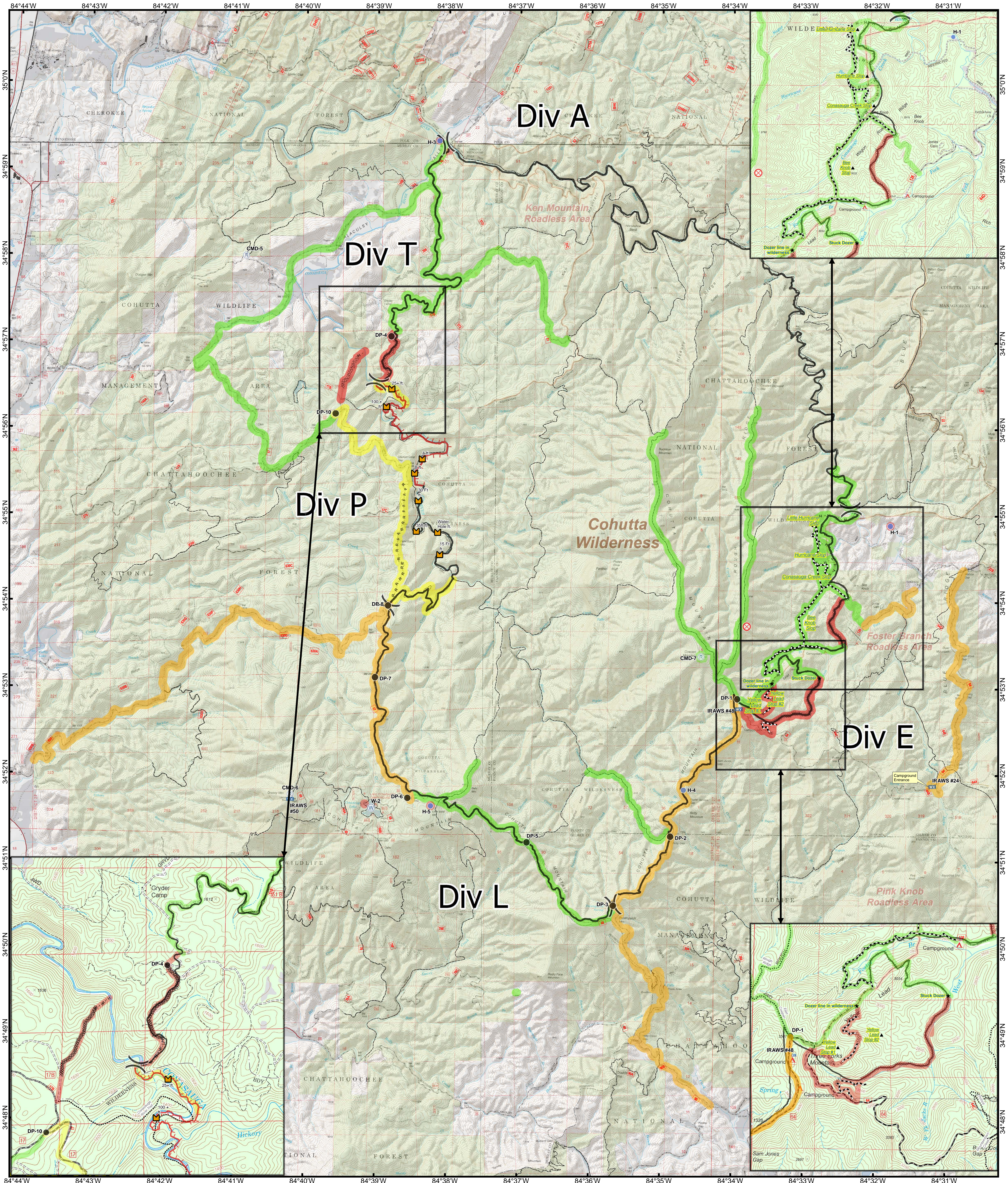


Rough Ridge Suppression Repair



0 0.5 1
 Miles
 Road to Grade: 24.3 miles
 Dozerline: 3.25 miles
 Dozerline to seed: 4.7 acres

- Burned Railroad Ties
- Mobile Weather Unit
- Completed Dozer Line
- Roads
- Rehab Status
- Drop Point
- Airstrip or Airport
- Fire Origin
- Helispot
- Incident Command Post
- Pump
- Repeater
- Staging Area
- Water Source
- Old Roadbed
- Controlled Line
- Hand Line
- Road as Completed Line
- Trail

