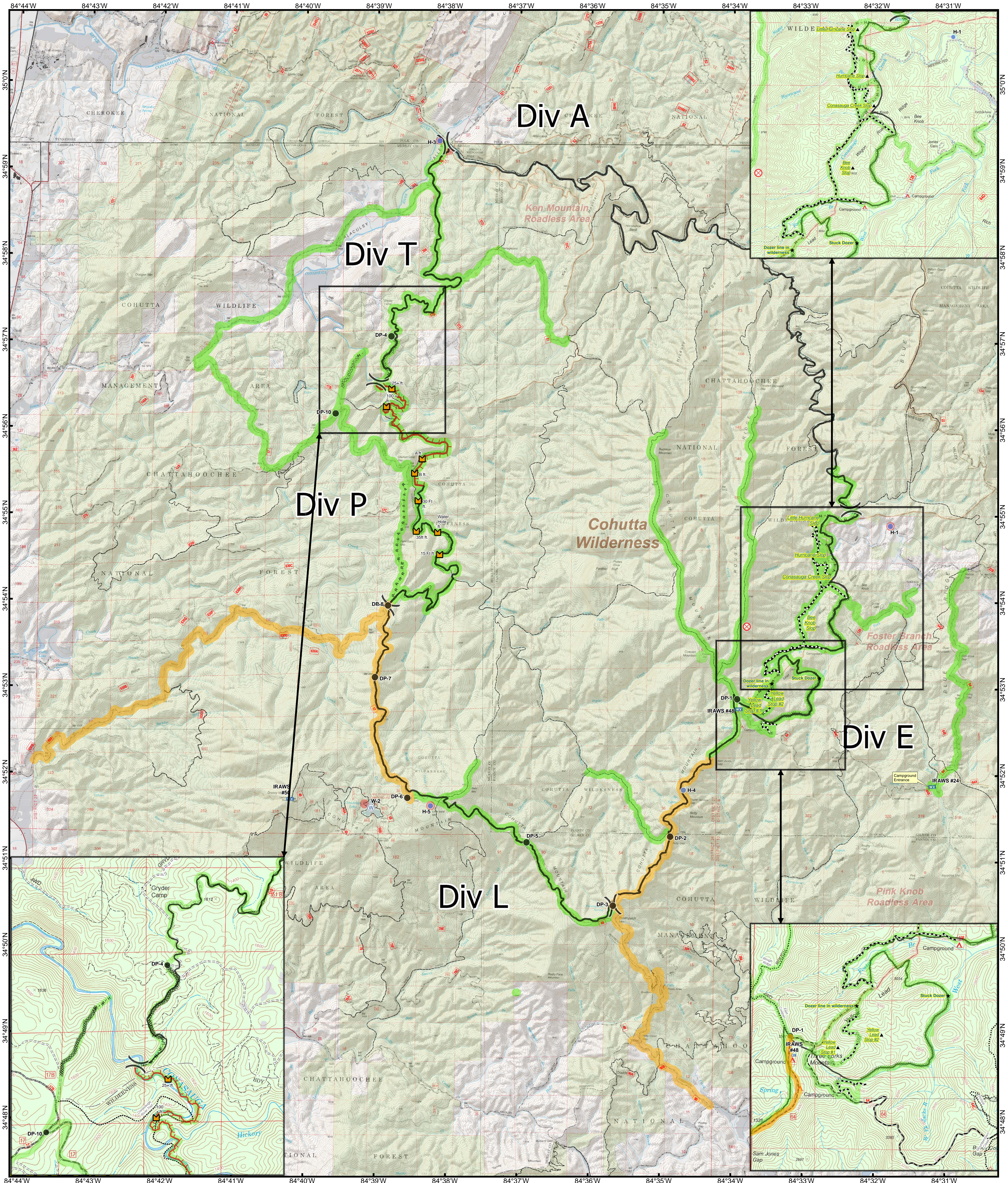


Rough Ridge Suppression Repair



0 0.5 1
 Miles
 Road to Grade: 24.3 miles
 Dozerline: 3.25 miles
 Dozerline to seed: 4.7 acres

- Burned Railroad Ties
- Mobile Weather Unit
- Completed Dozer Line
- Roads
- Drop Point
- Airstrip or Airport
- Fire Origin
- Helispot
- Incident Command Post
- Repeater
- Staging Area
- Water Source
- Old Roadbed
- Controlled Line
- Hand Line
- Road as Completed Line
- Trail
- Uncontrolled Fire Edge
- Completed Dozer Line
- 1 - BASIC CUSTODIAL CARE (CLOSED)
- 2 - HIGH CLEARANCE VEHICLES
- 3 - SUITABLE FOR PASSENGER CARS
- 4 - MODERATE DEGREE OF USER COMFORT
- 5 - HIGH DEGREE OF USER COMFORT

- Rehab Status**
- Completed
 - Identified for Repair
 - Ready for Inspection
 - Road to Grade
 - Forest Service Land

