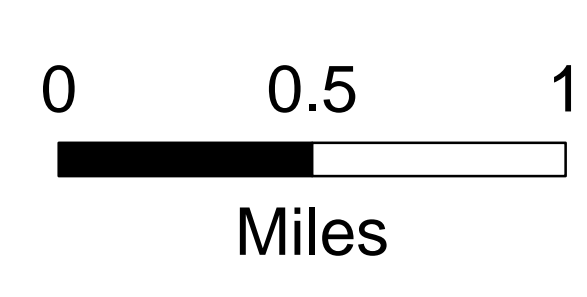
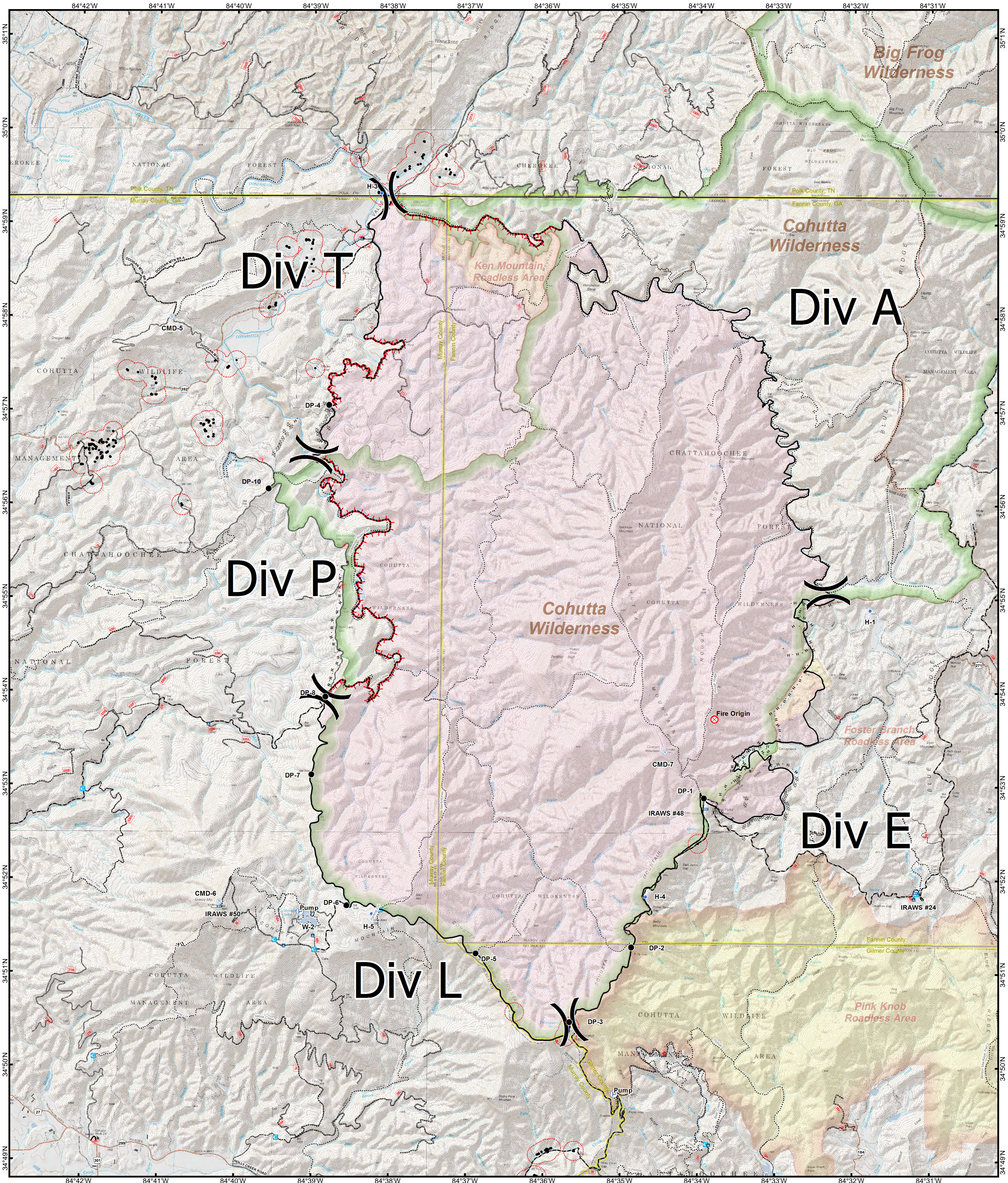


Rough Ridge Operations



● Drop Point	☒ Mobile Weather Unit	— BreakType	— Completed Dozer Line	■ FirePolygon	— Roads	⋯ Trail
✈ Airstrip or Airport	Ⓟ Pump	— Controlled Line	— Structures - Digitized 11/09/2016	▬ State Boundary	— 1 - BASIC CUSTODIAL CARE (CLOSED)	▬ County Boundary
⊗ Fire Origin	Ⓡ Repeater	— Hand Line	▬ Structures - 200 Yd Buffer	▬ Roadless Areas	— 2 - HIGH CLEARANCE VEHICLES	
Ⓡ Helispot	Ⓢ Staging Area	— Road as Completed Line	Ⓡ Camping		— 3 - SUITABLE FOR PASSENGER CARS	
Ⓡ Incident Command Post	Ⓣ Water Source	— Contained Line	Ⓡ Trailhead		— 4 - MODERATE DEGREE OF USER COMFORT	
					— 5 - HIGH DEGREE OF USER COMFORT	

