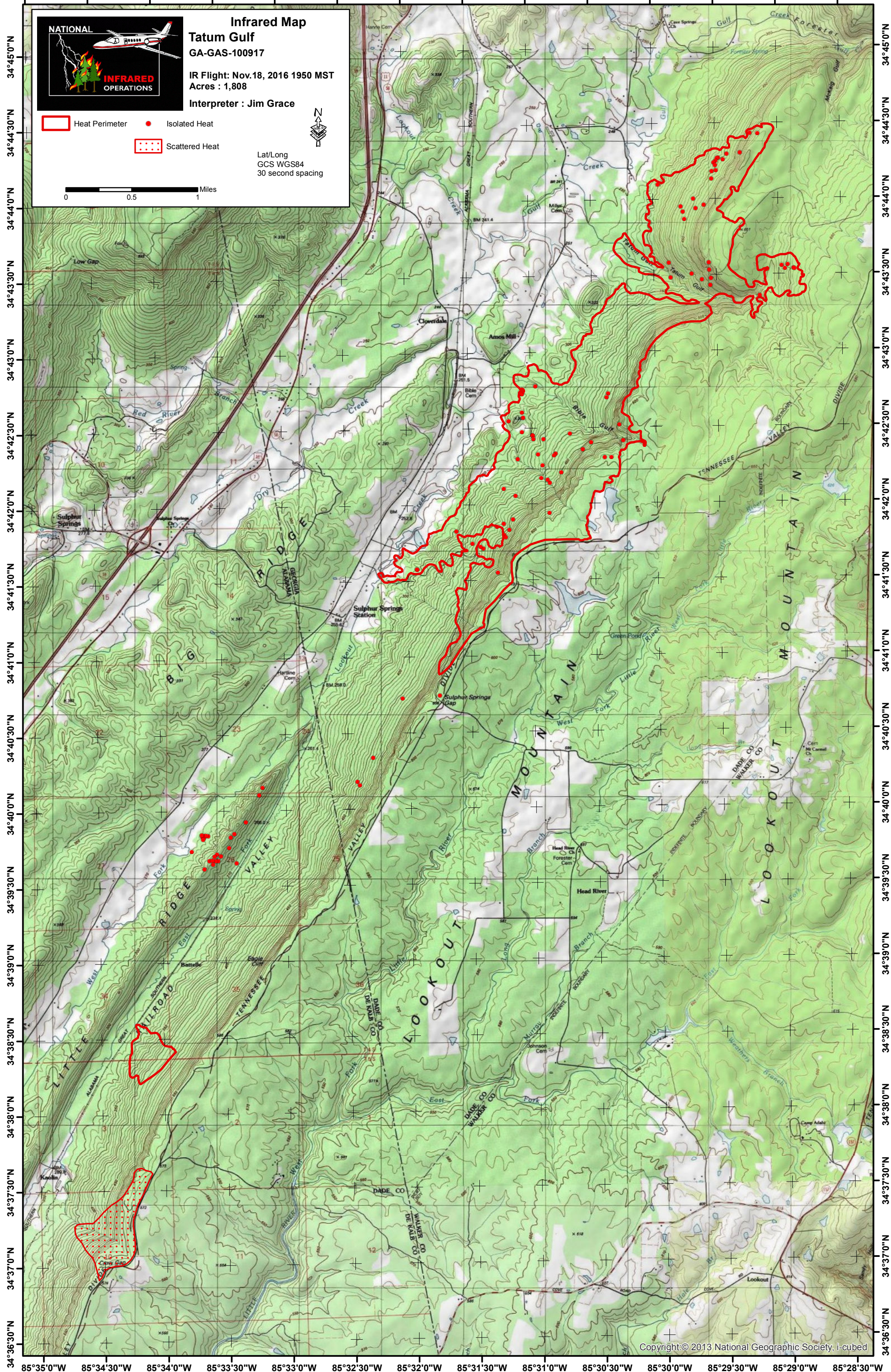


85°35'0"W 85°34'30"W 85°34'0"W 85°33'30"W 85°33'0"W 85°32'30"W 85°32'0"W 85°31'30"W 85°31'0"W 85°30'30"W 85°30'0"W 85°29'30"W 85°29'0"W 85°28'30"W



Infrared Map
Tatum Gulf
GA-GAS-100917
IR Flight: Nov.18, 2016 1950 MST
Acres : 1,808
Interpreter : Jim Grace

- Heat Perimeter
- Isolated Heat
- Scattered Heat

Lat/Long
GCS WGS84
30 second spacing

