

83°38'W 83°36'W 83°34'W 83°32'W 83°30'W 83°28'W 83°26'W

# ROCK MOUNTAIN GA-CHF-160079



## Air Ops Map 11/17/16

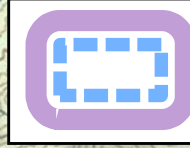
IR Perimeter as of 11/15/16 2347 - 7,999 ac.



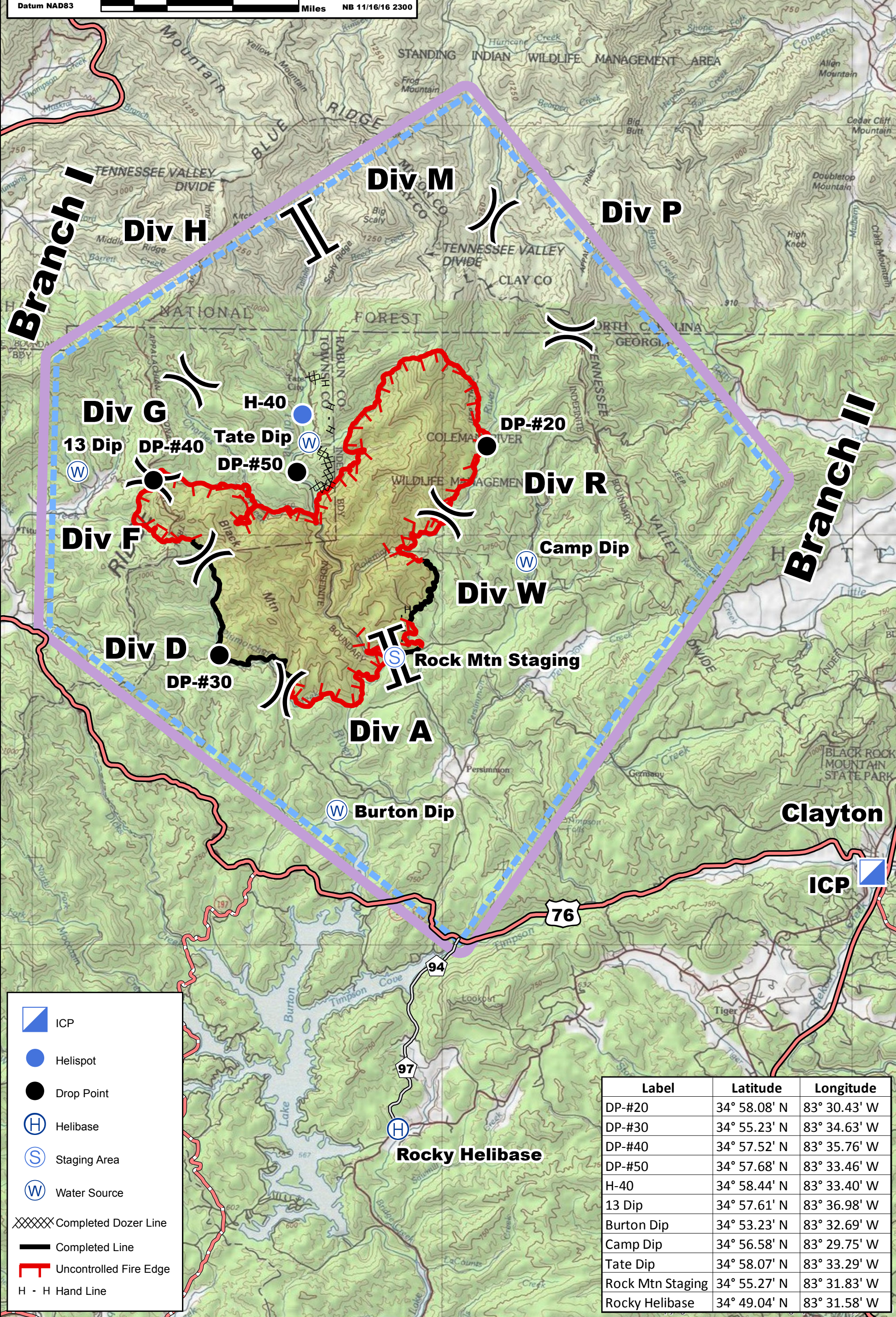
Datum NAD83



NB 11/16/16 2300



TFR 6\_9243 (11/16/16 2351 UTC)



- ICP
- Helispot
- Drop Point
- Helibase
- Staging Area
- Water Source
- Completed Dozer Line
- Completed Line
- Uncontrolled Fire Edge
- H - H Hand Line

Label	Latitude	Longitude
DP-#20	34° 58.08' N	83° 30.43' W
DP-#30	34° 55.23' N	83° 34.63' W
DP-#40	34° 57.52' N	83° 35.76' W
DP-#50	34° 57.68' N	83° 33.46' W
H-40	34° 58.44' N	83° 33.40' W
13 Dip	34° 57.61' N	83° 36.98' W
Burton Dip	34° 53.23' N	83° 32.69' W
Camp Dip	34° 56.58' N	83° 29.75' W
Tate Dip	34° 58.07' N	83° 33.29' W
Rock Mtn Staging	34° 55.27' N	83° 31.83' W
Rocky Helibase	34° 49.04' N	83° 31.58' W