

83°38'W 83°36'W 83°34'W 83°32'W 83°30'W 83°28'W 83°26'W

# ROCK MOUNTAIN GA-CHF-160079



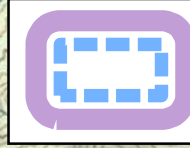
## Air Ops Map 11/17/16

IR Perimeter as of 11/16/16 1905 - 8,545 ac.



Datum NAD83

NB 11/17/16 1000

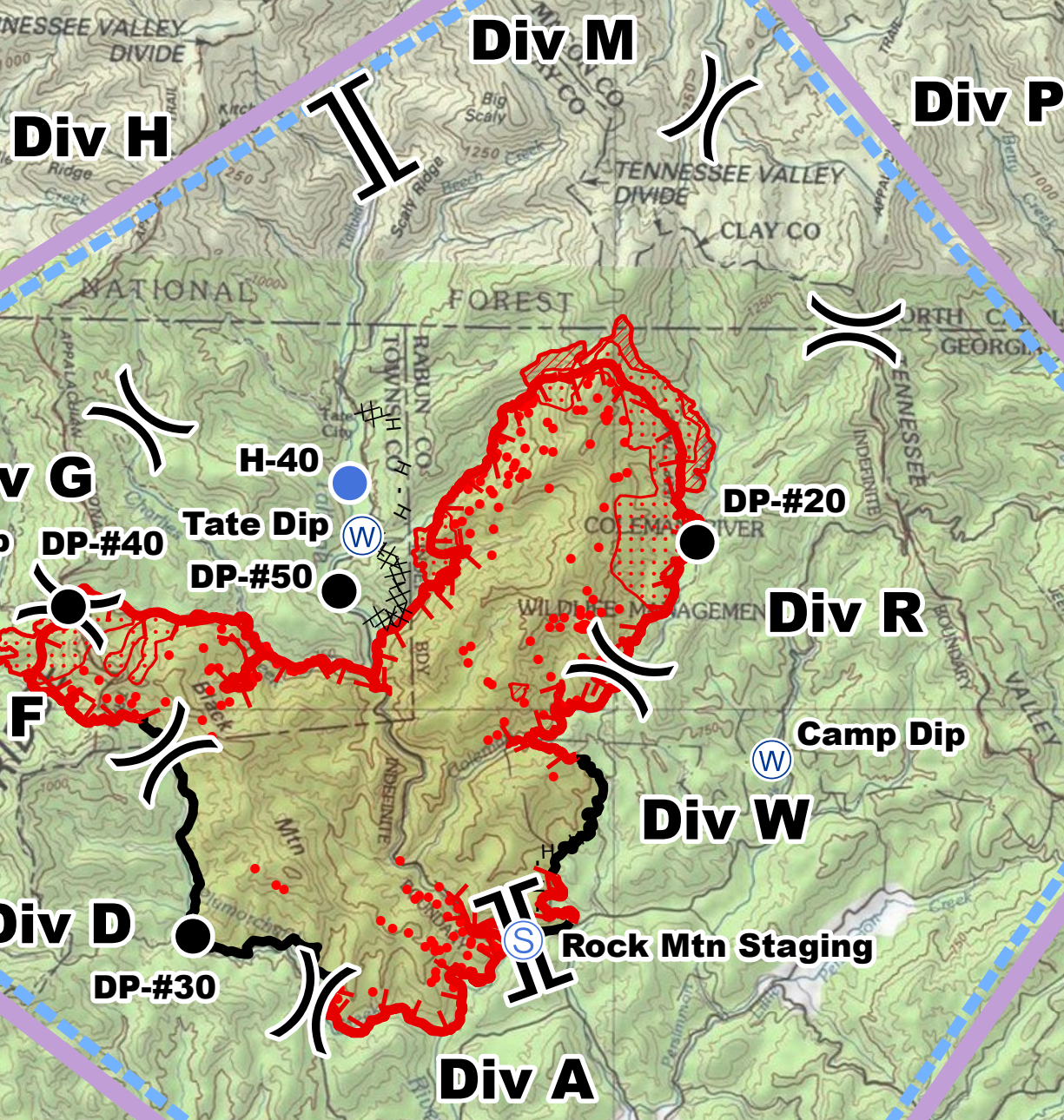


TFR 6\_9243 (11/16/16 2351 UTC)

- IR - Isolated Heat 20161116 1905
- IR - Heat Perimeter 20161116 1905
- IR - Intense Heat 20161116 1905
- IR - Scattered Heat 20161116 1905

**Branch I**

**Branch II**



- ▣ ICP
- Helispot
- Drop Point
- H Helibase
- S Staging Area
- W Water Source
- XXXXX Completed Dozer Line
- Completed Line
- Uncontrolled Fire Edge
- H · H Hand Line

Label	Latitude	Longitude
DP-#20	34° 58.08' N	83° 30.43' W
DP-#30	34° 55.23' N	83° 34.63' W
DP-#40	34° 57.52' N	83° 35.76' W
DP-#50	34° 57.68' N	83° 33.46' W
H-40	34° 58.44' N	83° 33.40' W
13 Dip	34° 57.61' N	83° 36.98' W
Burton Dip	34° 53.23' N	83° 32.69' W
Camp Dip	34° 56.58' N	83° 29.75' W
Tate Dip	34° 58.07' N	83° 33.29' W
Rock Mtn Staging	34° 55.27' N	83° 31.83' W
Rocky Helibase	34° 49.04' N	83° 31.58' W

35°4'N  
35°2'N  
35°0'N  
34°58'N  
34°56'N  
34°54'N  
34°52'N  
34°50'N  
34°48'N

35°4'N  
35°2'N  
35°0'N  
34°58'N  
34°56'N  
34°54'N  
34°52'N  
34°50'N  
34°48'N

83°36'W 83°34'W 83°32'W 83°30'W 83°28'W 83°26'W 83°24'W