

83°38'W 83°36'W 83°34'W 83°32'W 83°30'W 83°28'W 83°26'W

ROCK MOUNTAIN GA-CHF-160079



Air Ops Map 11/18/16

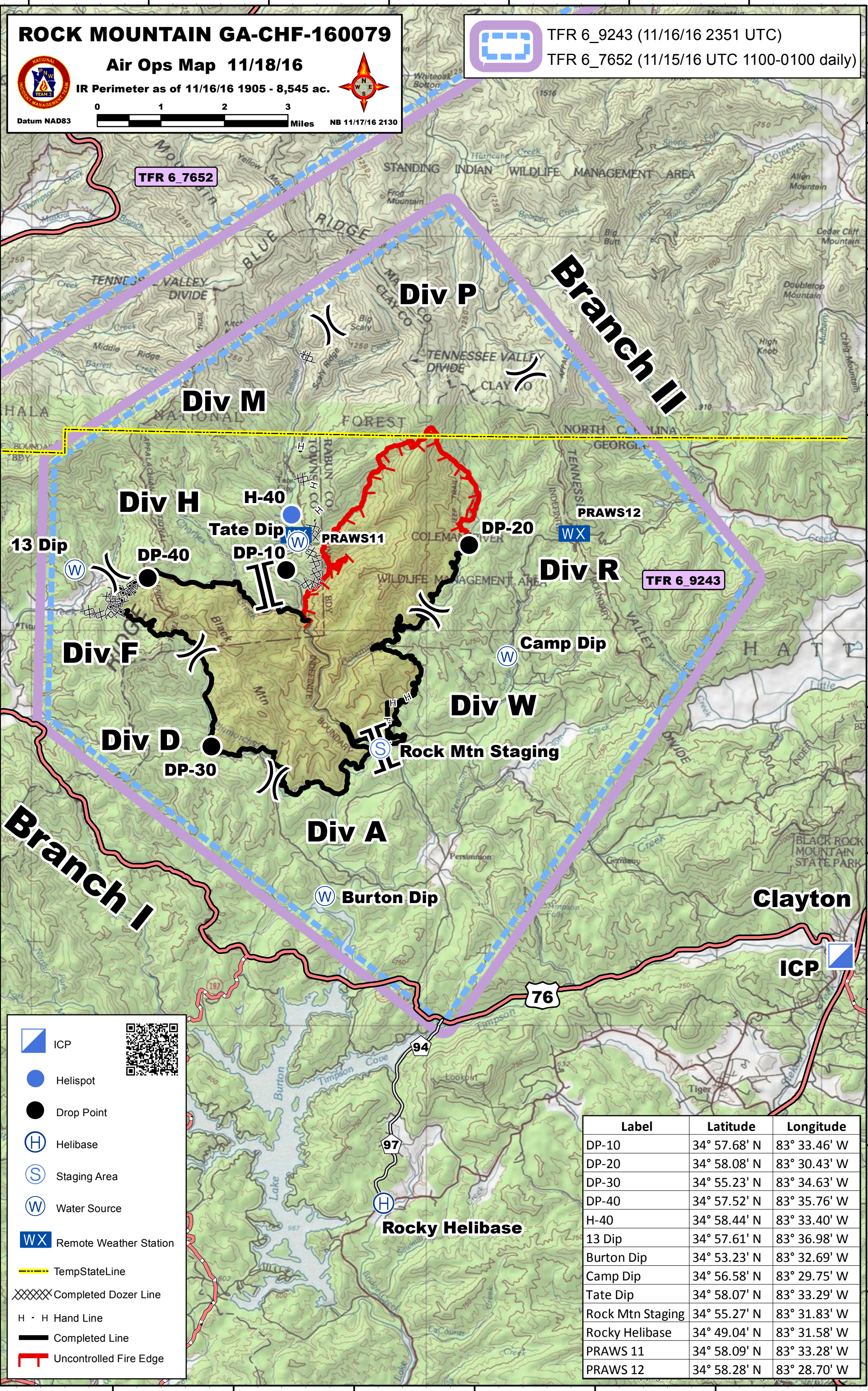
IR Perimeter as of 11/16/16 1905 - 8,545 ac.




TFR 6_9243 (11/16/16 2351 UTC)
TFR 6_7652 (11/15/16 UTC 1100-0100 daily)

35°4'N
35°2'N
35°0'N
34°58'N
34°56'N
34°54'N
34°52'N
34°50'N
34°48'N

35°4'N
35°2'N
35°0'N
34°58'N
34°56'N
34°54'N
34°52'N
34°50'N
34°48'N



- ICP
- Helispot
- Drop Point
- Helibase
- Staging Area
- Water Source
- Remote Weather Station
- TempStateLine
- Completed Dozer Line
- Hand Line
- Completed Line
- Uncontrolled Fire Edge



Label	Latitude	Longitude
DP-10	34° 57.68' N	83° 33.46' W
DP-20	34° 58.08' N	83° 30.43' W
DP-30	34° 55.23' N	83° 34.63' W
DP-40	34° 57.52' N	83° 35.76' W
H-40	34° 58.44' N	83° 33.40' W
13 Dip	34° 57.61' N	83° 36.98' W
Burton Dip	34° 53.23' N	83° 32.69' W
Camp Dip	34° 56.58' N	83° 29.75' W
Tate Dip	34° 58.07' N	83° 33.29' W
Rock Mtn Staging	34° 55.27' N	83° 31.83' W
Rocky Helibase	34° 49.04' N	83° 31.58' W
PRAWS 11	34° 58.09' N	83° 33.28' W
PRAWS 12	34° 58.28' N	83° 28.70' W

83°36'W 83°34'W 83°32'W 83°30'W 83°28'W 83°26'W 83°24'W