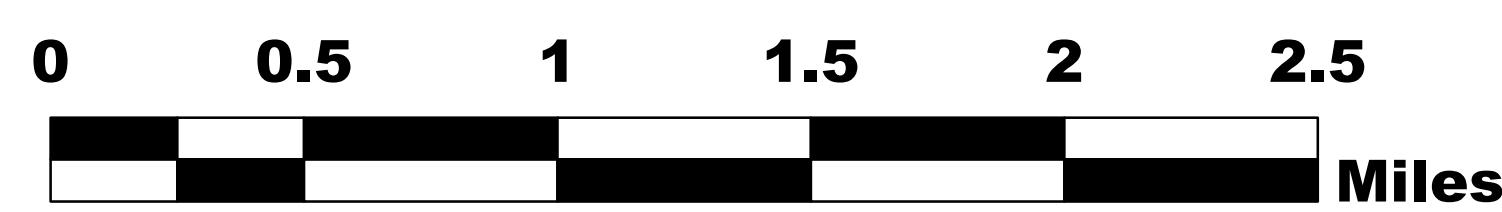


# ROCK MOUNTAIN GA-CHF-160079



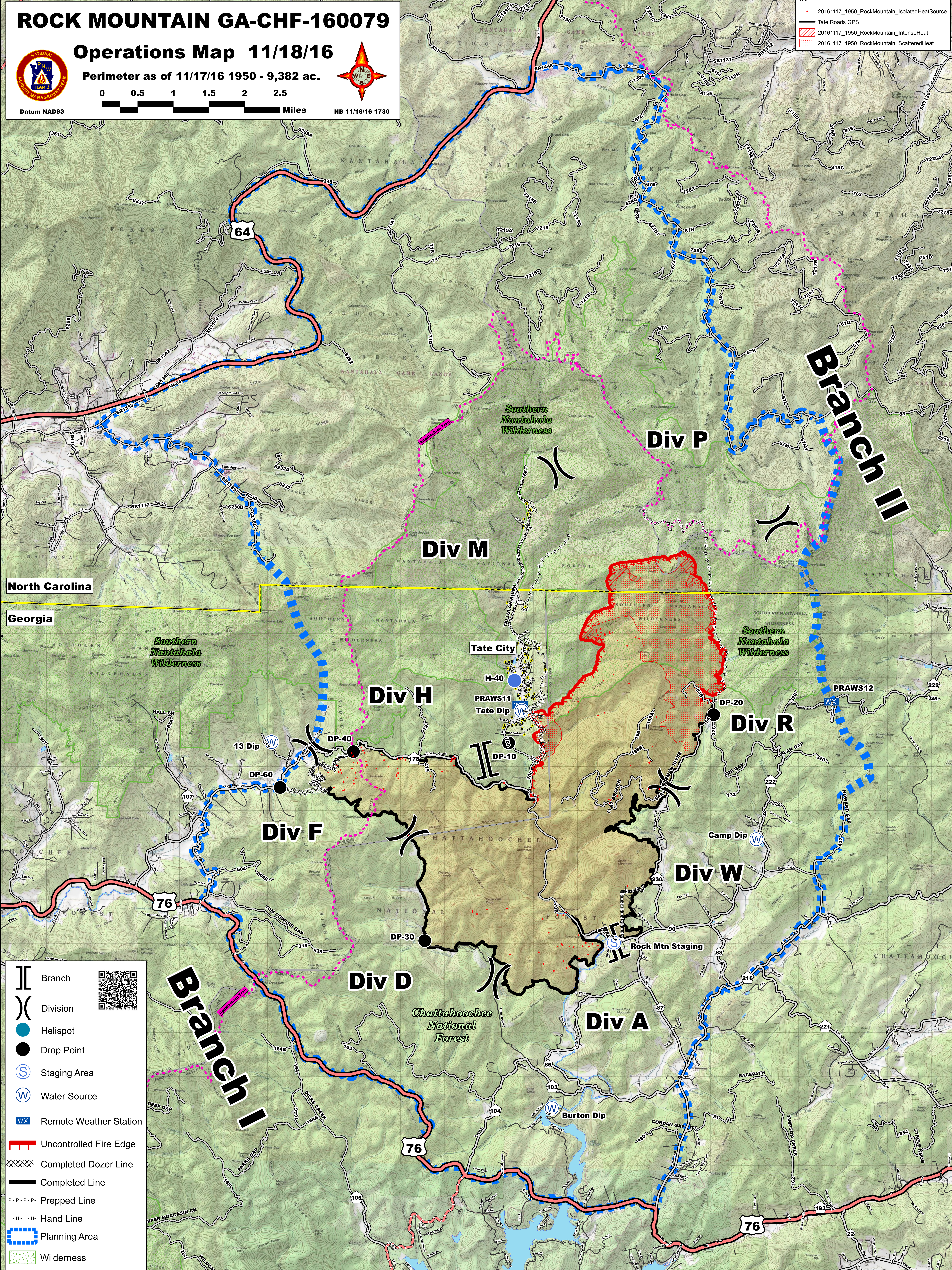
## Operations Map 11/18/16

Perimeter as of 11/17/16 1950 - 9,382 ac.



NB 11/18/16 1730

- IR 20161117\_1950\_RockMountain\_IsolatedHeatSource
- Tate Roads GPS
- 20161117\_1950\_RockMountain\_IntenseHeat
- 20161117\_1950\_RockMountain\_ScatteredHeat



North Carolina

Georgia

- Branch
- Division
- Helispot
- Drop Point
- Staging Area
- Water Source
- Remote Weather Station
- Uncontrolled Fire Edge
- Completed Dozer Line
- Completed Line
- Prepped Line
- Hand Line
- Planning Area
- Wilderness



- 20161117\_1950\_RockMountain\_IsolatedHeatSource
- Tate Roads GPS
- 20161117\_1950\_RockMountain\_IntenseHeat
- 20161117\_1950\_RockMountain\_ScatteredHeat