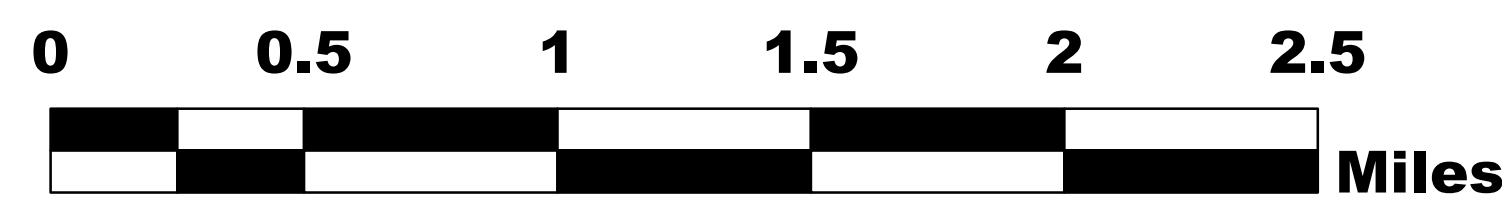


ROCK MOUNTAIN GA-CHF-160079



Operations Map 11/18/16

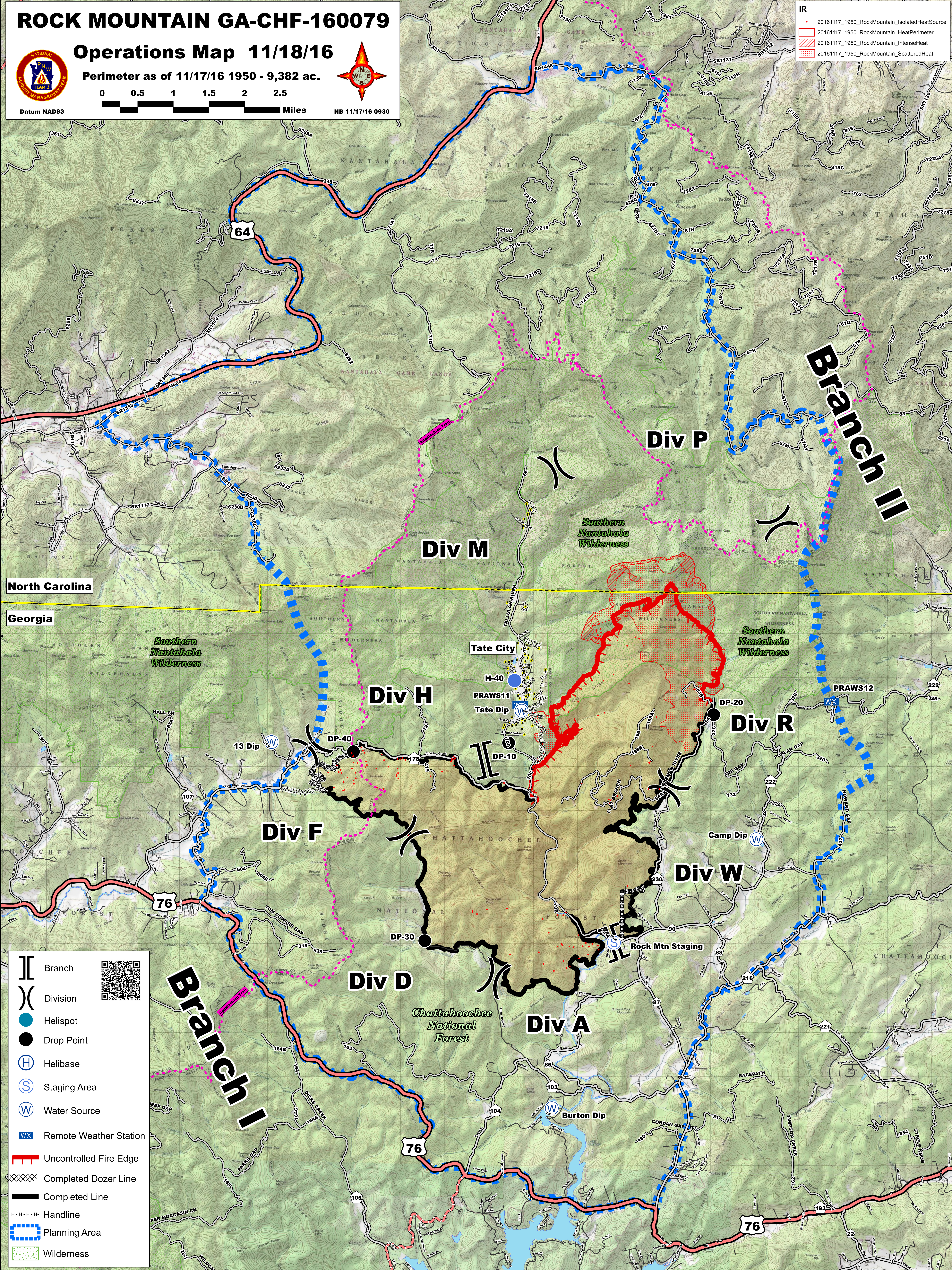
Perimeter as of 11/17/16 1950 - 9,382 ac.



NB 11/17/16 0930

IR

- 20161117_1950_RockMountain_IsolatedHeatSource
- 20161117_1950_RockMountain_HeatPerimeter
- 20161117_1950_RockMountain_IntenseHeat
- 20161117_1950_RockMountain_ScatteredHeat



North Carolina

Georgia

Branch [Symbol]

Division [Symbol]

Helispot [Symbol]

Drop Point [Symbol]

Helibase [Symbol]

Staging Area [Symbol]

Water Source [Symbol]

Remote Weather Station [Symbol]

Uncontrolled Fire Edge [Symbol]

Completed Dozer Line [Symbol]

Completed Line [Symbol]

Handline [Symbol]

Planning Area [Symbol]

Wilderness [Symbol]

Branch I

Branch III

Southern Nantahala Wilderness

Southern Nantahala Wilderness

Chattahoochee National Forest

Div P

Div M

Div H

Div R

Div F

Div W

Div D

Div A

Tate City

Rock Mtn Staging

H-40

PRAWS11

Tate Dip

DP-10

DP-20

PRAWS12

13 Dip

DP-40

Camp Dip

76

76

76