

# ROCK MOUNTAIN GA-CHF-160079

## Air Ops Map 11/19/16

IR Perimeter as of 11/18/16 2043 - 10,425 ac.

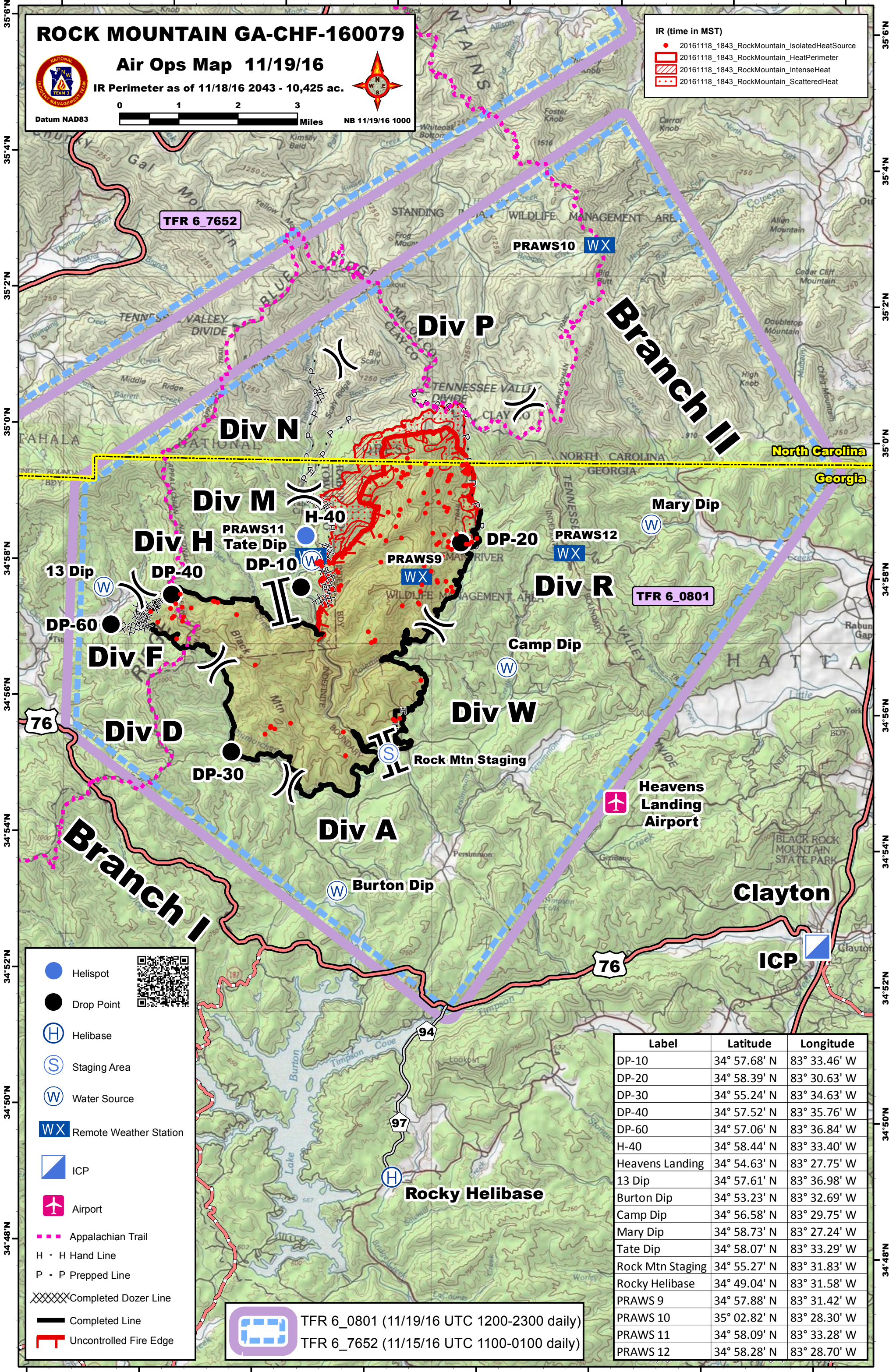


Datum NAD83 0 1 2 3 Miles NB 11/19/16 1000



IR (time in MST)

- 20161118\_1843\_RockMountain\_IsolatedHeatSource
- ▭ 20161118\_1843\_RockMountain\_HeatPerimeter
- ▨ 20161118\_1843\_RockMountain\_IntenseHeat
- ⋯ 20161118\_1843\_RockMountain\_ScatteredHeat



- Helispot
- Drop Point
- ⊕ Helibase
- ⊙ Staging Area
- ⊕ Water Source
- WX Remote Weather Station
- ▭ ICP
- ✈ Airport
- ⋯ Appalachian Trail
- H - H Hand Line
- P - P Prepped Line
- XXXXX Completed Dozer Line
- Completed Line
- ▬ Uncontrolled Fire Edge

TFR 6\_0801 (11/19/16 UTC 1200-2300 daily)  
 TFR 6\_7652 (11/15/16 UTC 1100-0100 daily)

Label	Latitude	Longitude
DP-10	34° 57.68' N	83° 33.46' W
DP-20	34° 58.39' N	83° 30.63' W
DP-30	34° 55.24' N	83° 34.63' W
DP-40	34° 57.52' N	83° 35.76' W
DP-60	34° 57.06' N	83° 36.84' W
H-40	34° 58.44' N	83° 33.40' W
Heavens Landing	34° 54.63' N	83° 27.75' W
13 Dip	34° 57.61' N	83° 36.98' W
Burton Dip	34° 53.23' N	83° 32.69' W
Camp Dip	34° 56.58' N	83° 29.75' W
Mary Dip	34° 58.73' N	83° 27.24' W
Tate Dip	34° 58.07' N	83° 33.29' W
Rock Mtn Staging	34° 55.27' N	83° 31.83' W
Rocky Helibase	34° 49.04' N	83° 31.58' W
PRAWS 9	34° 57.88' N	83° 31.42' W
PRAWS 10	35° 02.82' N	83° 28.30' W
PRAWS 11	34° 58.09' N	83° 33.28' W
PRAWS 12	34° 58.28' N	83° 28.70' W