

ROCK MOUNTAIN GA-CHF-160079

Air Ops Map 11/20/16

IR Perimeter as of 11/19/16 2259 - 11,287 ac.

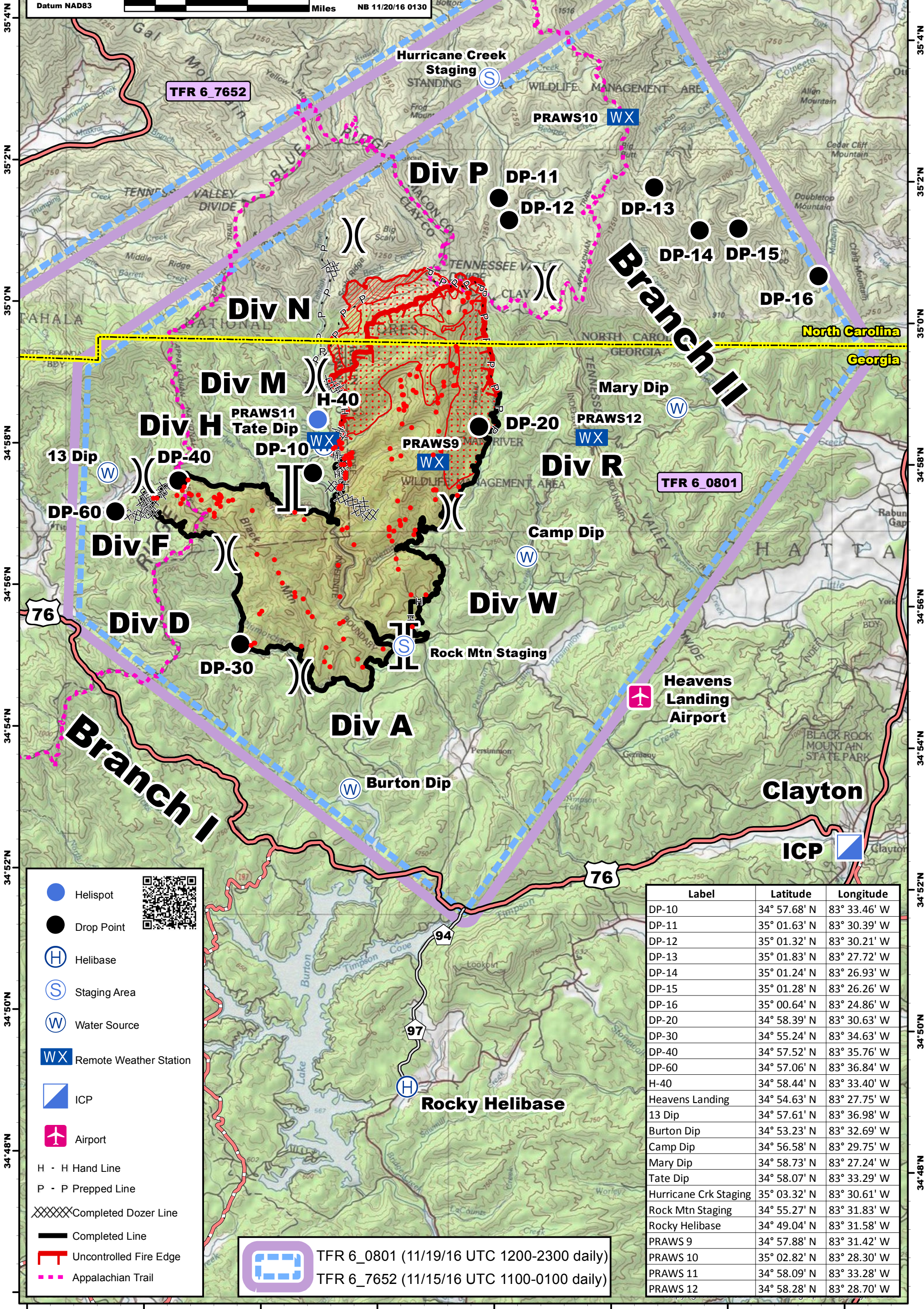


Datum NAD83

NB 11/20/16 0130

IR (time in MST)

- 20161119_2059_RockMountain_IsolatedHeatSource
- 20161119_2059_RockMountain_HeatPerimeter
- 20161119_2059_RockMountain_IntenseHeat
- 20161119_2059_RockMountain_ScatteredHeat



- Helispot
- Drop Point
- H Helibase
- S Staging Area
- W Water Source
- WX Remote Weather Station
- ▀ ICP
- ✈ Airport
- H - H Hand Line
- P - P Prepped Line
- XXXXX Completed Dozer Line
- Completed Line
- Uncontrolled Fire Edge
- Appalachian Trail

 TFR 6_0801 (11/19/16 UTC 1200-2300 daily)
 TFR 6_7652 (11/15/16 UTC 1100-0100 daily)

| Label | Latitude | Longitude |
|-----------------------|--------------|--------------|
| DP-10 | 34° 57.68' N | 83° 33.46' W |
| DP-11 | 35° 01.63' N | 83° 30.39' W |
| DP-12 | 35° 01.32' N | 83° 30.21' W |
| DP-13 | 35° 01.83' N | 83° 27.72' W |
| DP-14 | 35° 01.24' N | 83° 26.93' W |
| DP-15 | 35° 01.28' N | 83° 26.26' W |
| DP-16 | 35° 00.64' N | 83° 24.86' W |
| DP-20 | 34° 58.39' N | 83° 30.63' W |
| DP-30 | 34° 55.24' N | 83° 34.63' W |
| DP-40 | 34° 57.52' N | 83° 35.76' W |
| DP-60 | 34° 57.06' N | 83° 36.84' W |
| H-40 | 34° 58.44' N | 83° 33.40' W |
| Heavens Landing | 34° 54.63' N | 83° 27.75' W |
| 13 Dip | 34° 57.61' N | 83° 36.98' W |
| Burton Dip | 34° 53.23' N | 83° 32.69' W |
| Camp Dip | 34° 56.58' N | 83° 29.75' W |
| Mary Dip | 34° 58.73' N | 83° 27.24' W |
| Tate Dip | 34° 58.07' N | 83° 33.29' W |
| Hurricane Crk Staging | 35° 03.32' N | 83° 30.61' W |
| Rock Mtn Staging | 34° 55.27' N | 83° 31.83' W |
| Rocky Helibase | 34° 49.04' N | 83° 31.58' W |
| PRAWS 9 | 34° 57.88' N | 83° 31.42' W |
| PRAWS 10 | 35° 02.82' N | 83° 28.30' W |
| PRAWS 11 | 34° 58.09' N | 83° 33.28' W |
| PRAWS 12 | 34° 58.28' N | 83° 28.70' W |