

# ROCK MOUNTAIN GA-CHF-160079



## Ops Divisions 11/21/16

Perimeter as of 11/20/16 2216 - 12,779 ac.

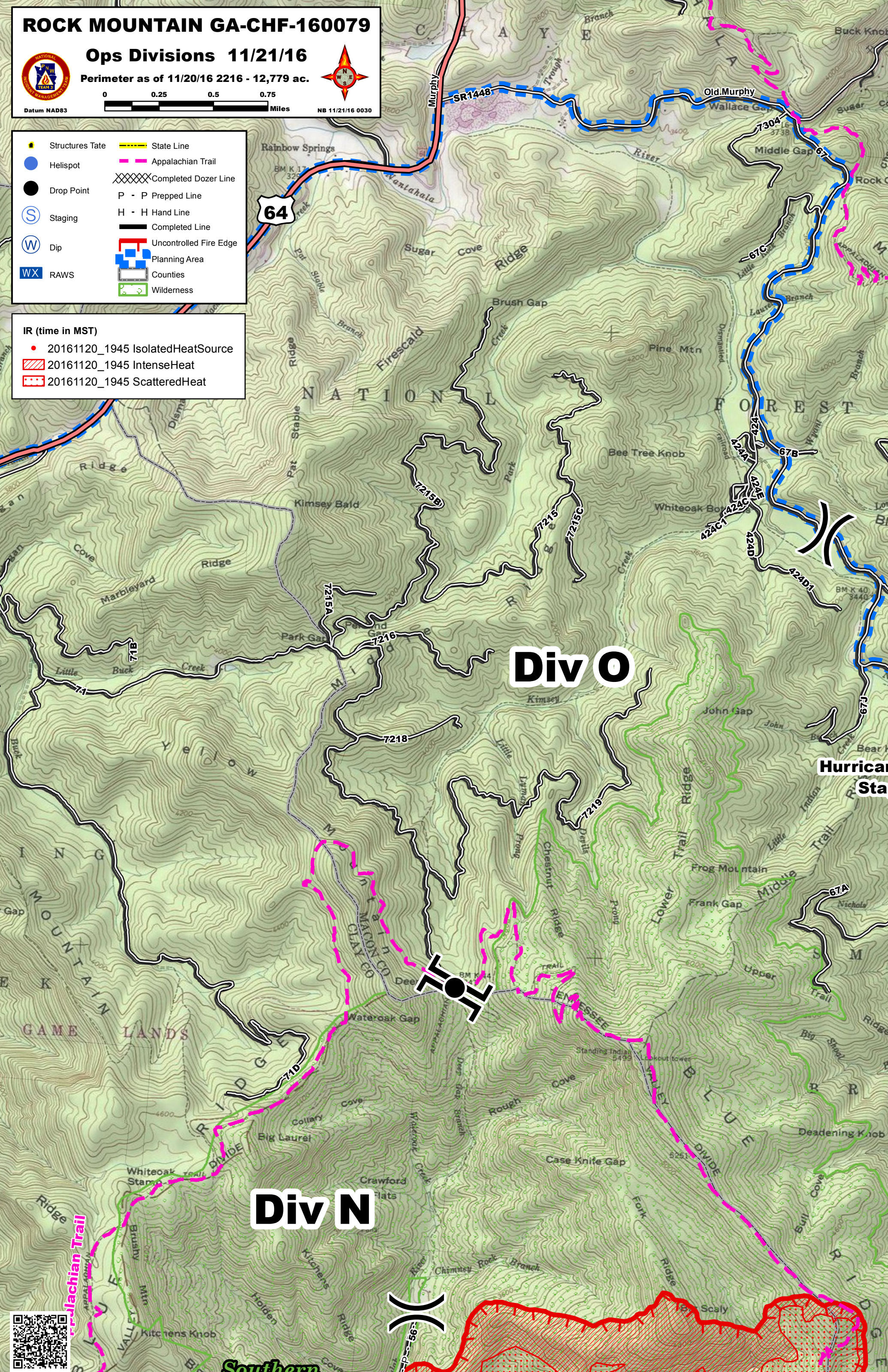


NB 11/21/16 0030

Datum NAD83

- Structures Tate
- Helispot
- Drop Point
- Staging
- Dip
- RAWS
- State Line
- Appalachian Trail
- Completed Dozer Line
- P - P Prepped Line
- H - H Hand Line
- Completed Line
- Uncontrolled Fire Edge
- Planning Area
- Counties
- Wilderness

- IR (time in MST)
- 20161120\_1945 IsolatedHeatSource
  - 20161120\_1945 IntenseHeat
  - 20161120\_1945 ScatteredHeat



Southern