

ROCK MOUNTAIN GA-CHF-160079



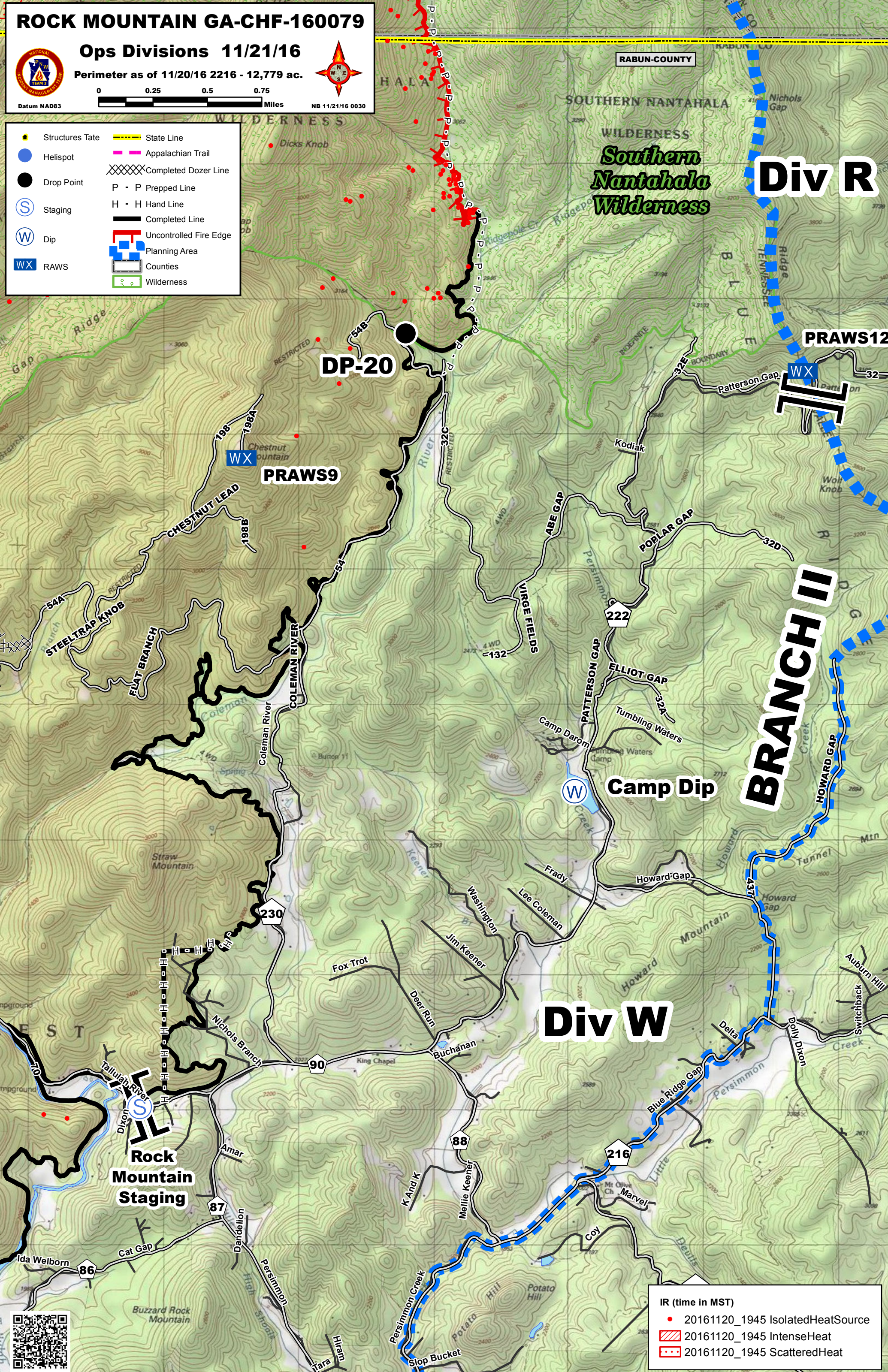
Ops Divisions 11/21/16

Perimeter as of 11/20/16 2216 - 12,779 ac.



NB 11/21/16 0030

- Structures Tate
- Helispot
- Drop Point
- Staging
- Dip
- RAWS
- State Line
- Appalachian Trail
- Completed Dozer Line
- P - P Prepped Line
- H - H Hand Line
- Completed Line
- Uncontrolled Fire Edge
- Planning Area
- Counties
- Wilderness



Div R

DP-20

PRAWS9

PRAWS12

BRANCH II

Camp Dip

Div W

Rock Mountain Staging

IR (time in MST)

- 20161120_1945 IsolatedHeatSource
- 20161120_1945 IntenseHeat
- 20161120_1945 ScatteredHeat

