

ROCK MOUNTAIN GA-CHF-160079



Ops Divisions 11/22/16

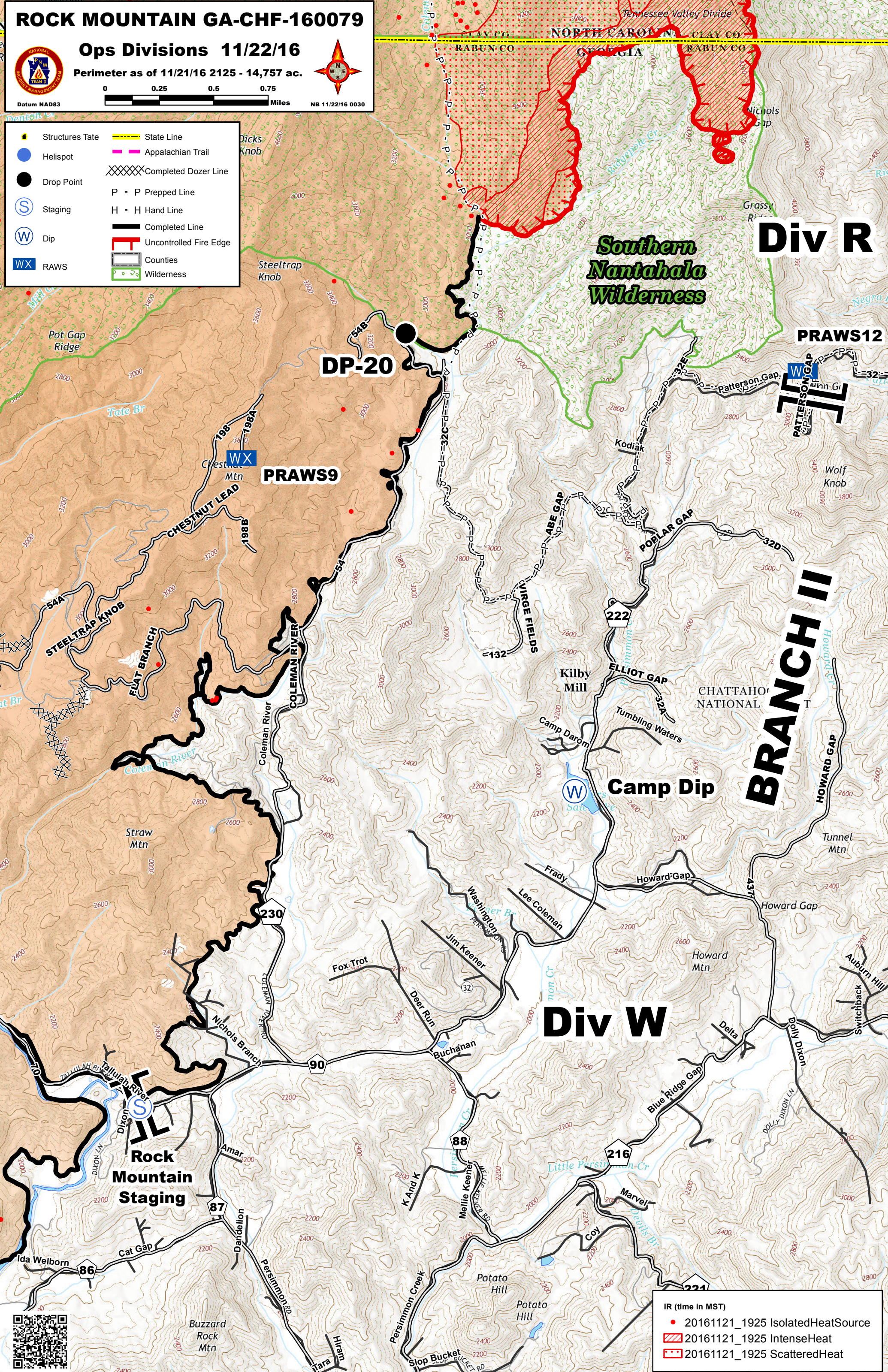
Perimeter as of 11/21/16 2125 - 14,757 ac.



Datum NAD83

NB 11/22/16 0030

- Structures Tate
- Helispot
- Drop Point
- Staging
- Dip
- RAWS
- State Line
- Appalachian Trail
- Completed Dozer Line
- P - P Prepped Line
- H - H Hand Line
- Completed Line
- Uncontrolled Fire Edge
- Counties
- Wilderness



DP-20

PRAWS9

Div R

PRAWS12

BRANCH II

Camp Dip

Div W

Rock Mountain Staging

- IR (time in MST)
- 20161121_1925 IsolatedHeatSource
 - 20161121_1925 IntenseHeat
 - 20161121_1925 ScatteredHeat

