

# ROCK MOUNTAIN GA-CHF-160079

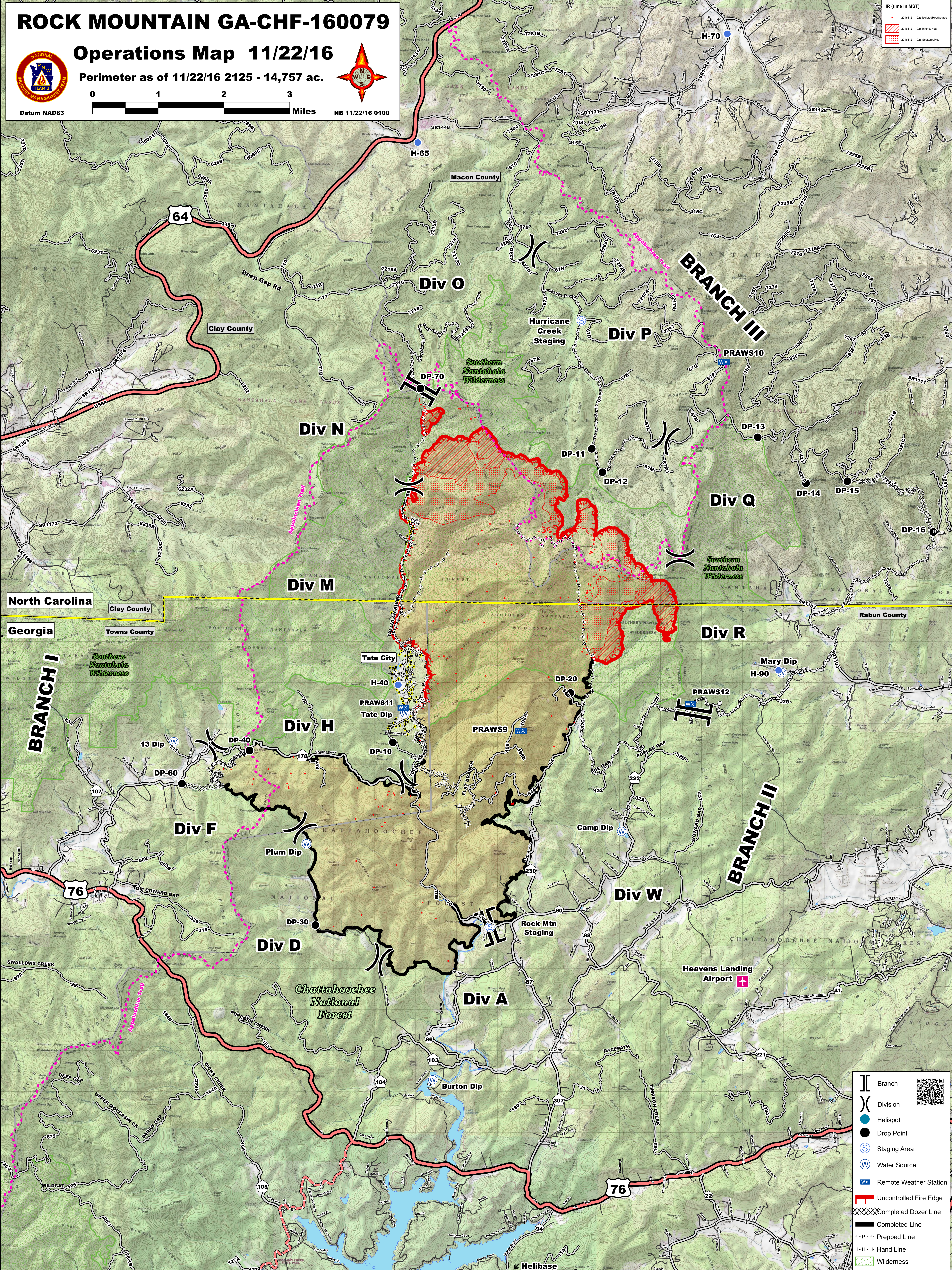
## Operations Map 11/22/16

Perimeter as of 11/22/16 2125 - 14,757 ac.



IR (time in MST)

- 20161121\_1625 IncompleteSource
- 20161121\_1625 Incomplete
- 20161121\_1625 SourceSheet



- Branch
- Division
- Helispot
- Drop Point
- Staging Area
- Water Source
- Remote Weather Station
- Uncontrolled Fire Edge
- Completed Dozer Line
- Completed Line
- Prepped Line
- Hand Line
- Wilderness