

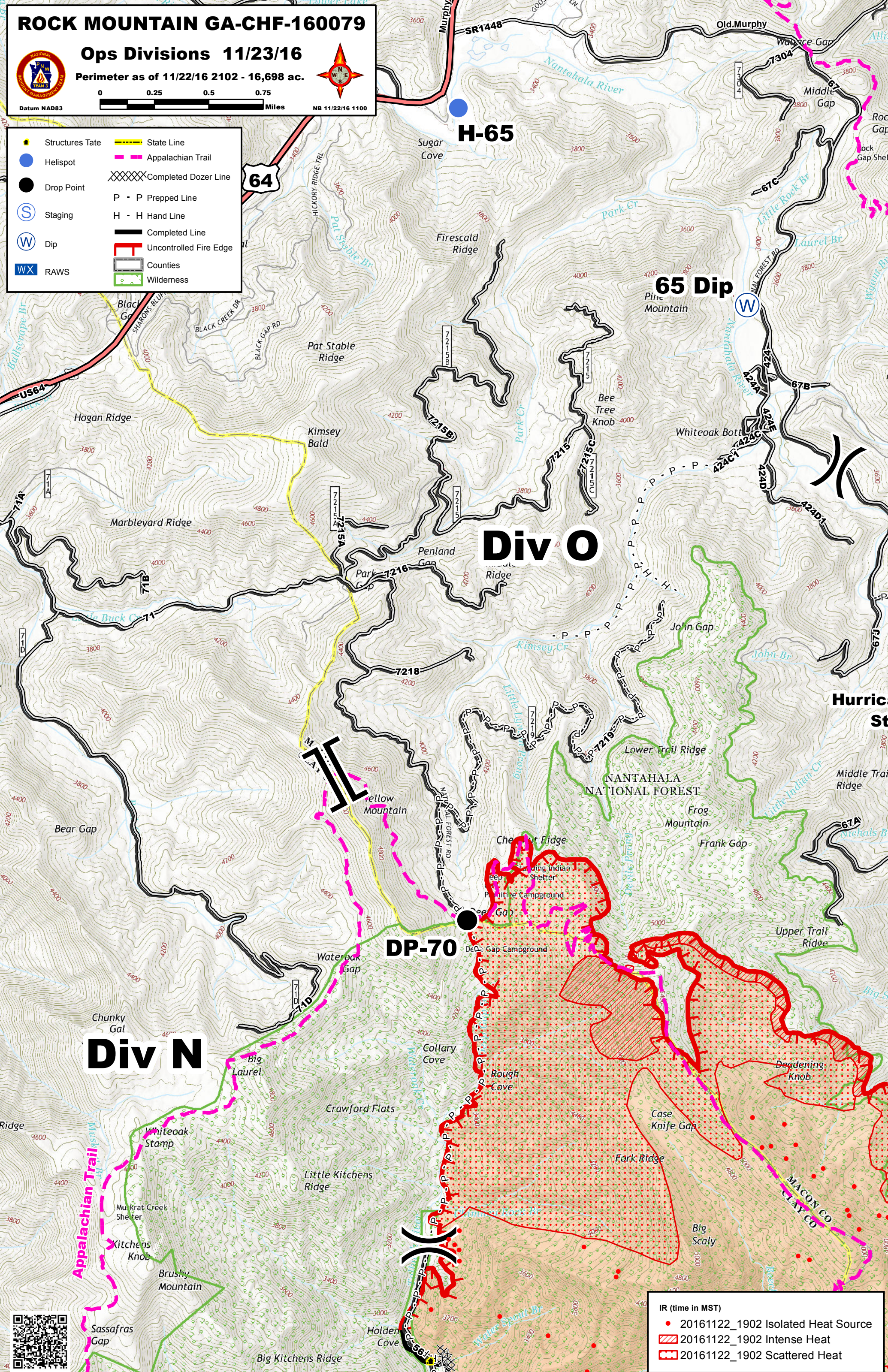
ROCK MOUNTAIN GA-CHF-160079

Ops Divisions 11/23/16

Perimeter as of 11/22/16 2102 - 16,698 ac.



- Structures Tate
- Helispot
- Drop Point
- Staging
- Dip
- RAWS
- State Line
- Appalachian Trail
- Completed Dozer Line
- P - P Prepped Line
- H - H Hand Line
- Completed Line
- Uncontrolled Fire Edge
- Counties
- Wilderness



- IR (time in MST)
- 20161122_1902 Isolated Heat Source
 - 20161122_1902 Intense Heat
 - 20161122_1902 Scattered Heat