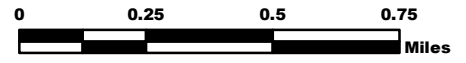


# ROCK MOUNTAIN GA-CHF-160079

## Ops Divisions 11/23/16

Perimeter as of 11/22/16 2102 - 16,698 ac.

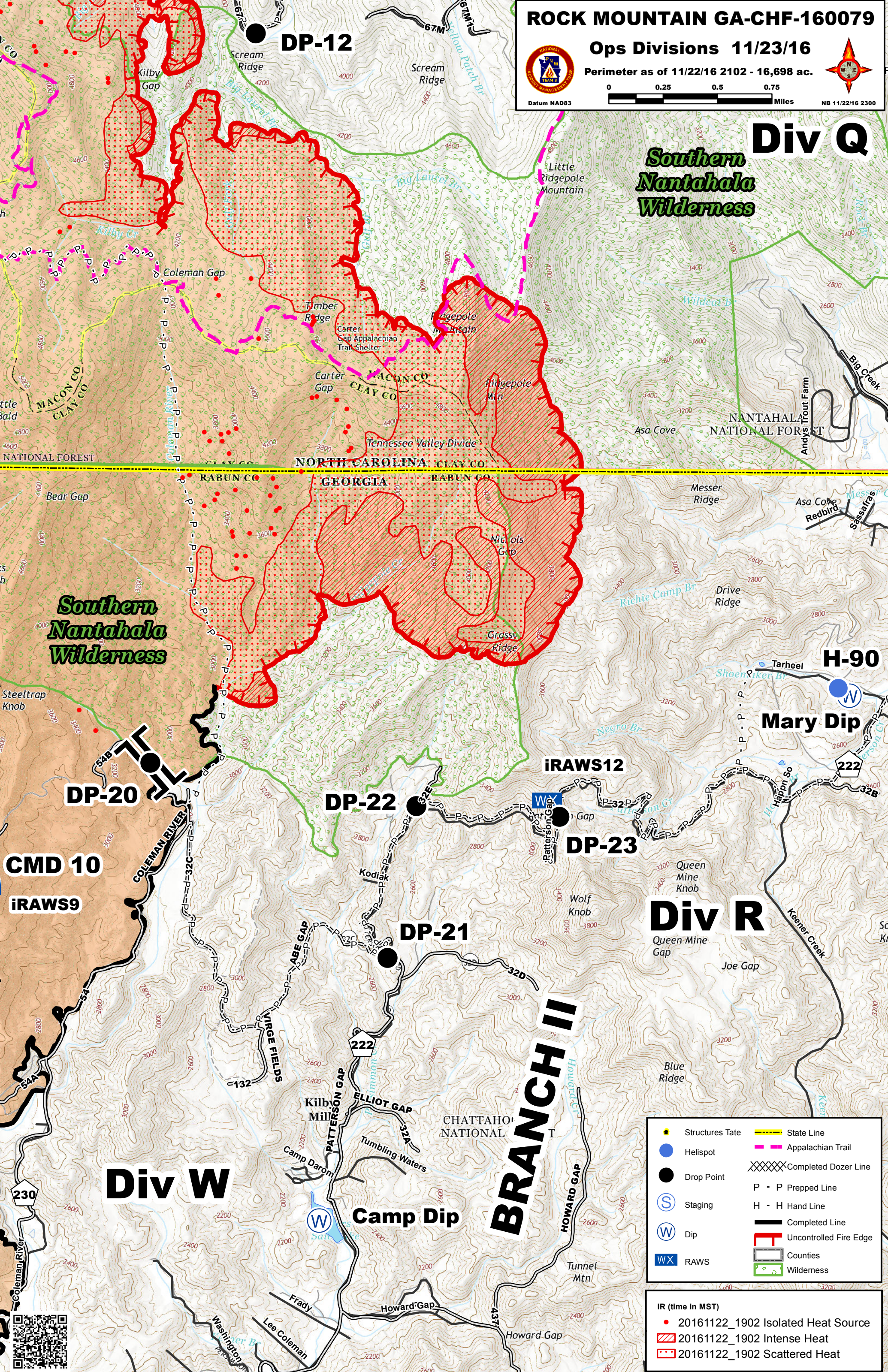


Datum NAD83

NB 11/22/16 2300

# Div Q

## Southern Nantahala Wilderness



## Southern Nantahala Wilderness

### CMD 10

### iRAWS9

# Div W

# Div R

Queen Mine Gap

	Structures Tate		State Line
	Helispot		Appalachian Trail
	Drop Point		Completed Dozer Line
	Staging		P - P Prepped Line
	Dip		H - H Hand Line
	RAWS		Completed Line
			Uncontrolled Fire Edge
			Counties
			Wilderness

IR (time in MST)	
	20161122_1902 Isolated Heat Source
	20161122_1902 Intense Heat
	20161122_1902 Scattered Heat

