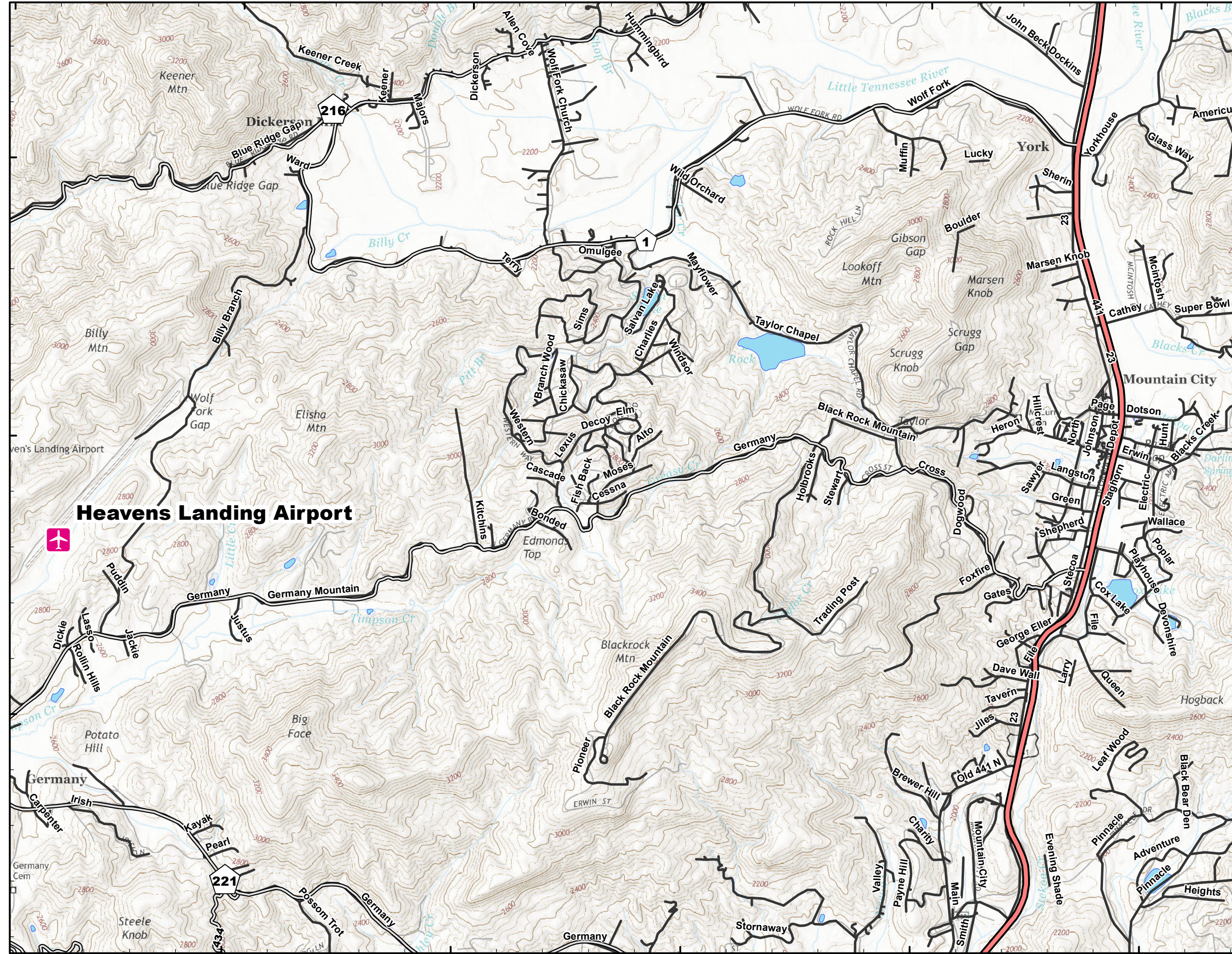


83°28'W 83°27'W 83°26'W 83°25'W 83°24'W 83°23'W



34°56'N 34°55'N 34°54'N

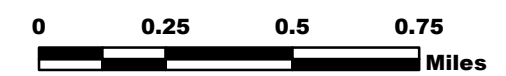
83°27'W 83°26'W 83°25'W 83°24'W 83°23'W

ROCK MOUNTAIN GA-CHF-160079

IAP Tiles

11/24/16

Perimeter as of
11/23/16 1000 - 18,069 ac.



A1	A2	A3
B1	B2	B3
C1	C2	C3
D1	D2	D3

- Structures
- Helispot
- Drop Point
- Staging
- Dip
- RAWs
- State Line
- Appalachian Trail
- Completed Dozer Line
- Prepped Line
- Hand Line
- Completed Line
- Uncontrolled Fire Edge
- Wilderness
- IR Isolated Heat Source
- IR Intense Heat
- IR Scattered Heat



Datum NAD83



NB 11/23/16 2330