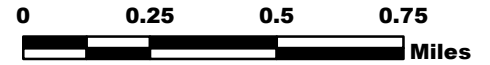


ROCK MOUNTAIN GA-CHF-160079

IAP Tiles

11/27/16

IR Perimeter as of
11/26/16 2205 - 22,371 ac.



A1	A2	A3
B1	B2	B3
C1	C2	C3
D1	D2	D3

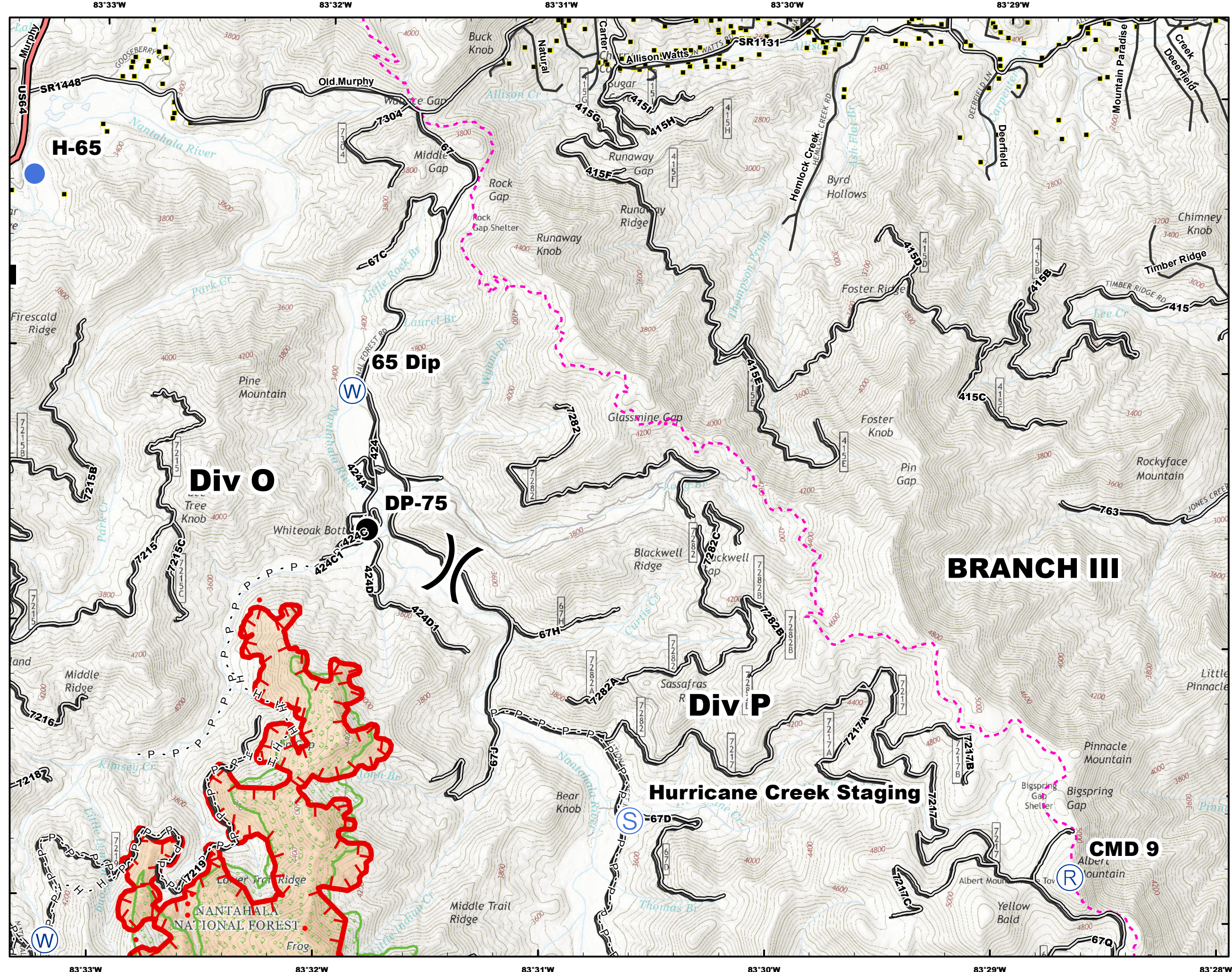
- Structures
- Helispot
- Drop Point
- Staging
- Dip
- RAWS
- State Line
- Appalachian Trail
- Completed Dozer Line
- P - P Prepped Line
- H - H Hand Line
- Completed Line
- Uncontrolled Fire Edge
- Wilderness
- IR Isolated Heat Source
- IR Intense Heat
- IR Scattered Heat



Datum NAD83



NB 11/27/16 0100

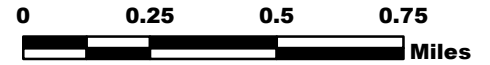


ROCK MOUNTAIN GA-CHF-160079

IAP Tiles

11/27/16

IR Perimeter as of
11/26/16 2205 - 22,371 ac.



A1	A2	A3
B1	B2	B3
C1	C2	C3
D1	D2	D3

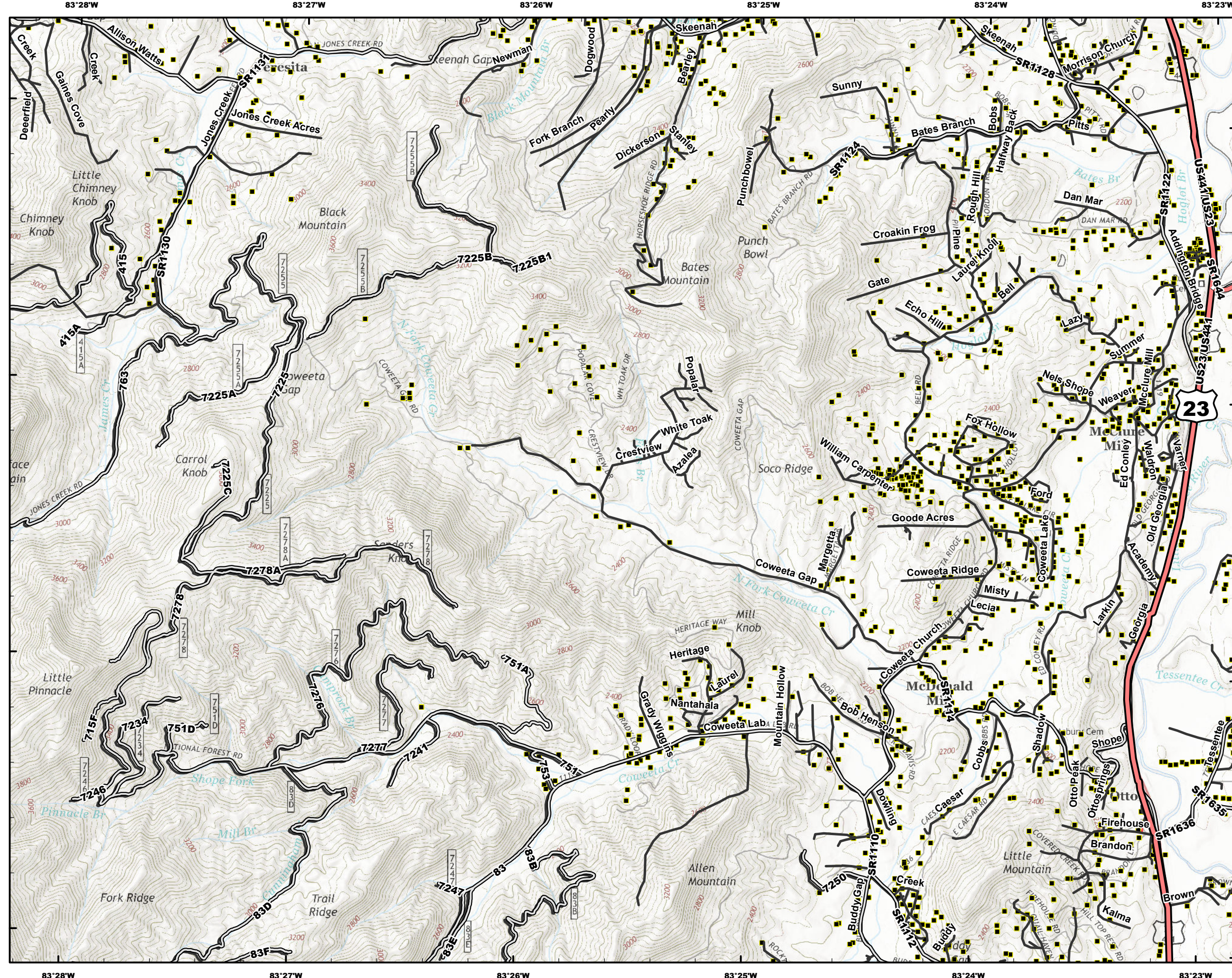
- Structures
- Helispot
- Drop Point
- Staging
- Dip
- RAWs
- State Line
- Appalachian Trail
- Completed Dozer Line
- Prepped Line
- Hand Line
- Completed Line
- Uncontrolled Fire Edge
- Wilderness
- IR Isolated Heat Source
- IR Intense Heat
- IR Scattered Heat



Datum NAD83



NB 11/27/16 0100

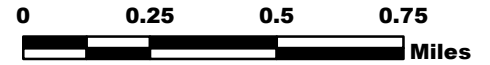


ROCK MOUNTAIN GA-CHF-160079

IAP Tiles

11/27/16

IR Perimeter as of
11/26/16 2205 - 22,371 ac.



A1	A2	A3
B1	B2	B3
C1	C2	C3
D1	D2	D3

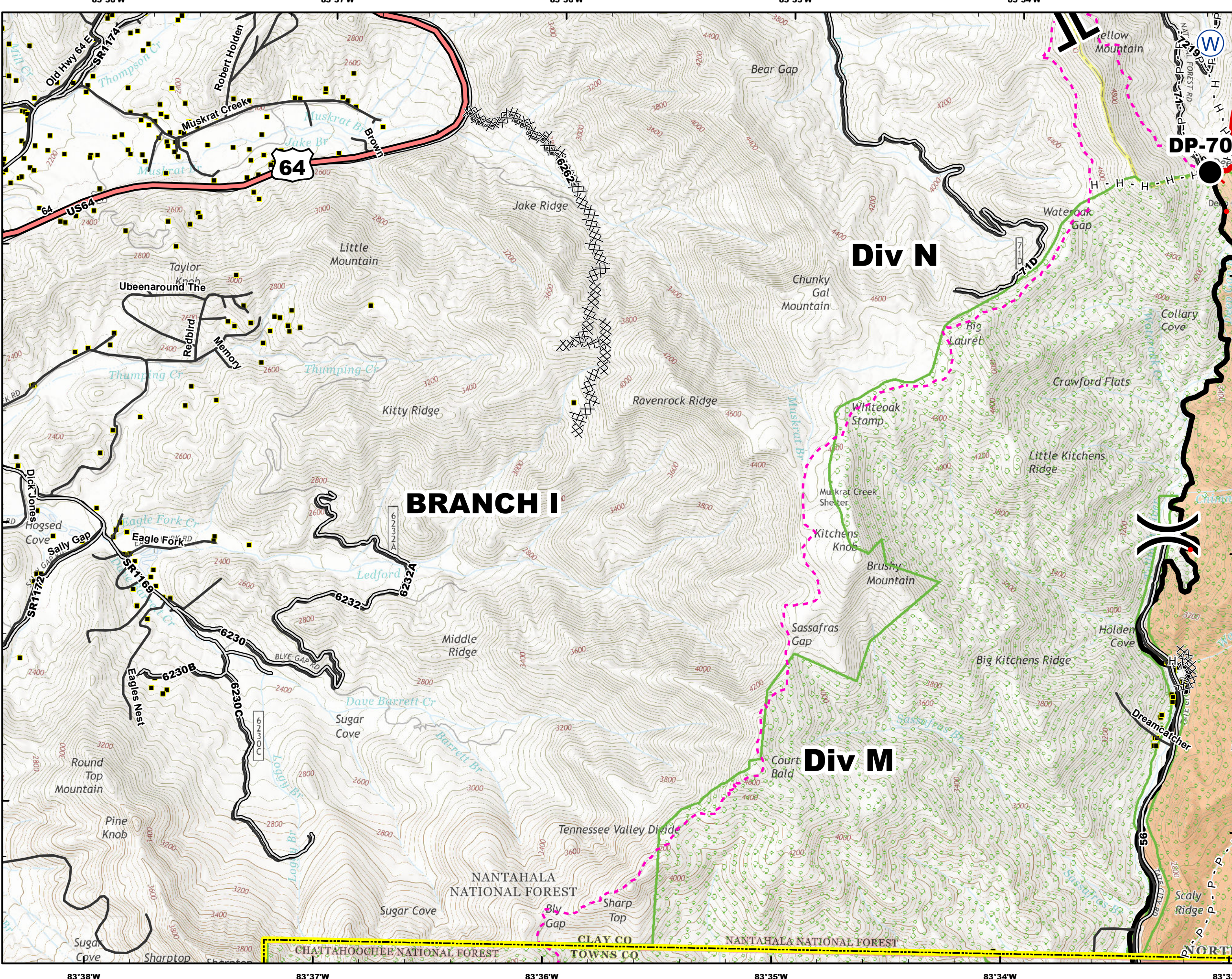
- Structures
- Helispot
- Drop Point
- Staging
- Dip
- RAWs
- State Line
- Appalachian Trail
- Completed Dozer Line
- P - P Prepped Line
- H - H Hand Line
- Completed Line
- Uncontrolled Fire Edge
- Wilderness
- IR Isolated Heat Source
- IR Intense Heat
- IR Scattered Heat



Datum NAD83



NB 11/27/16 0100

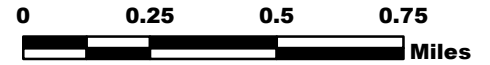


ROCK MOUNTAIN GA-CHF-160079

IAP Tiles

11/27/16

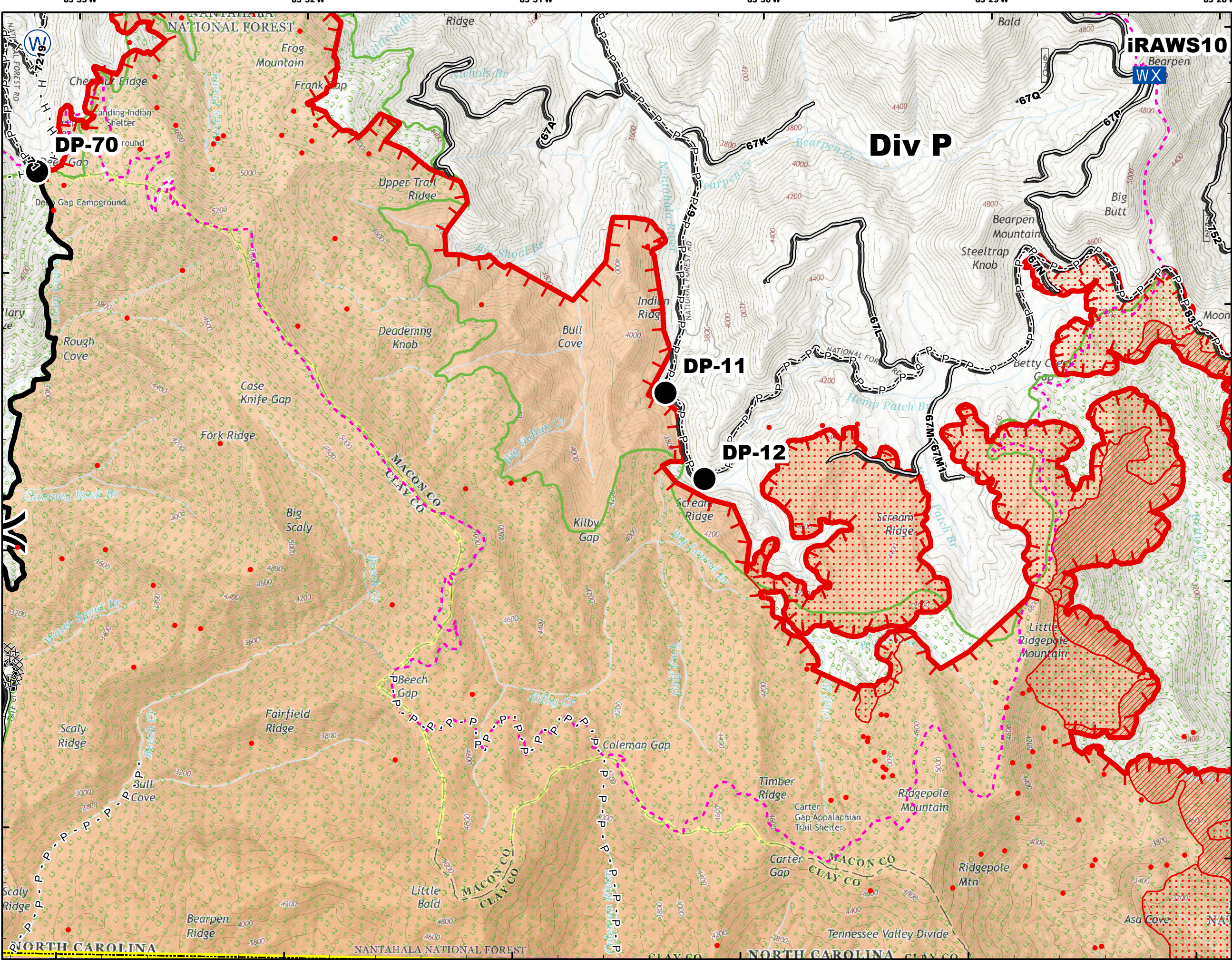
IR Perimeter as of
11/26/16 2205 - 22,371 ac.



A1	A2	A3
B1	B2	B3
C1	C2	C3
D1	D2	D3

- Structures
- Helispot
- Drop Point
- Staging
- Dip
- RAWs
- State Line
- Appalachian Trail
- Completed Dozer Line
- P - P Prepped Line
- H - H Hand Line
- Completed Line
- Uncontrolled Fire Edge
- Wilderness
- IR Isolated Heat Source
- IR Intense Heat
- IR Scattered Heat



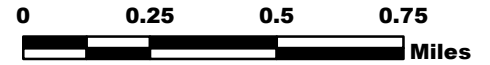


ROCK MOUNTAIN GA-CHF-160079

IAP Tiles

11/27/16

IR Perimeter as of
11/26/16 2205 - 22,371 ac.



A1	A2	A3
B1	B2	B3
C1	C2	C3
D1	D2	D3

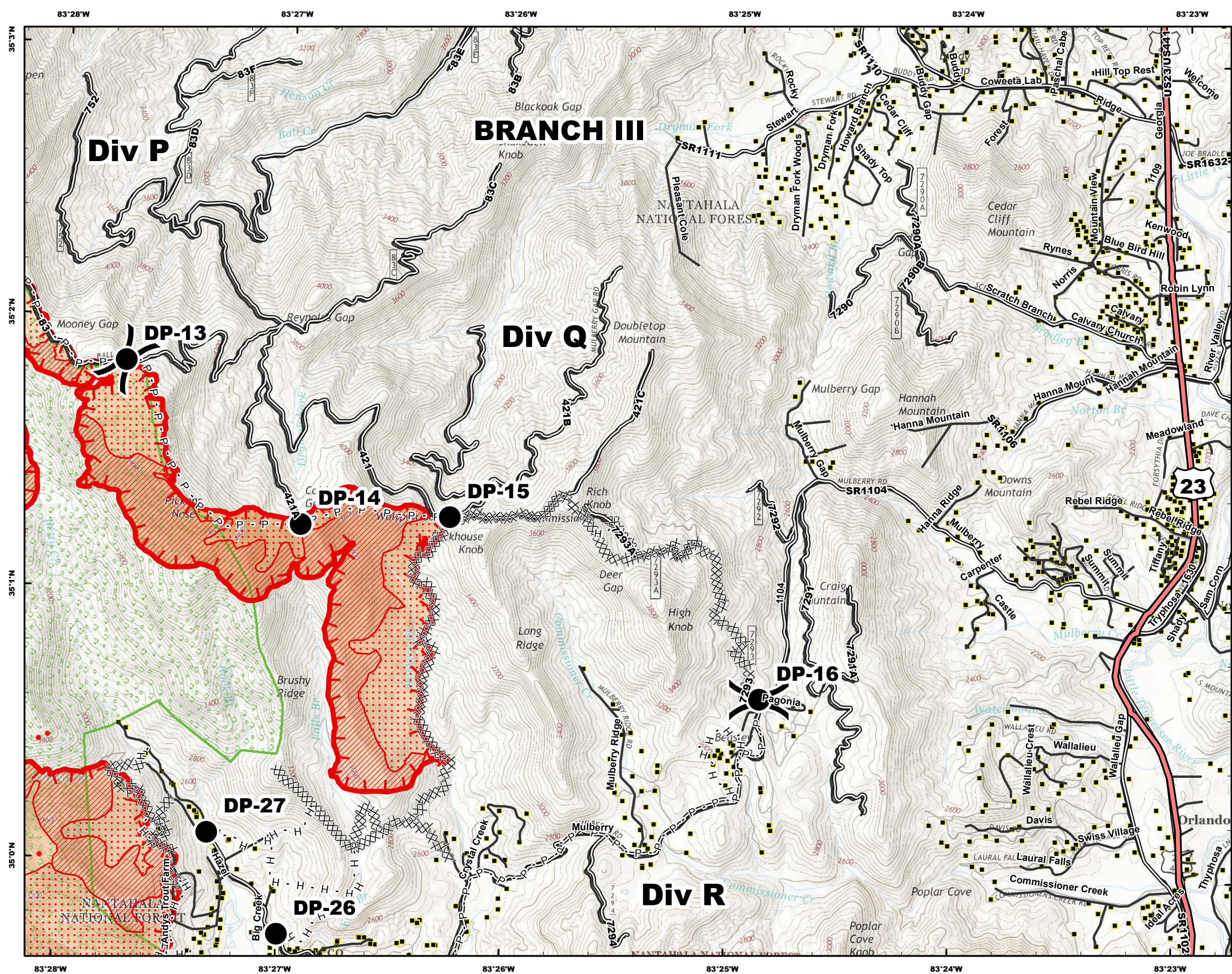
- Structures
- Helispot
- Drop Point
- Staging
- Dip
- RAWS
- State Line
- Appalachian Trail
- Completed Dozer Line
- Prepped Line
- Hand Line
- Completed Line
- Uncontrolled Fire Edge
- Wilderness
- IR Isolated Heat Source
- IR Intense Heat
- IR Scattered Heat



Datum NAD83



NB 11/27/16 0100

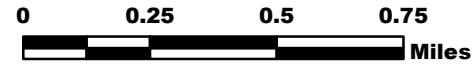


ROCK MOUNTAIN GA-CHF-160079

IAP Tiles

11/27/16

IR Perimeter as of
11/26/16 2205 - 22,371 ac.



A1	A2	A3
B1	B2	B3
C1	C2	C3
D1	D2	D3

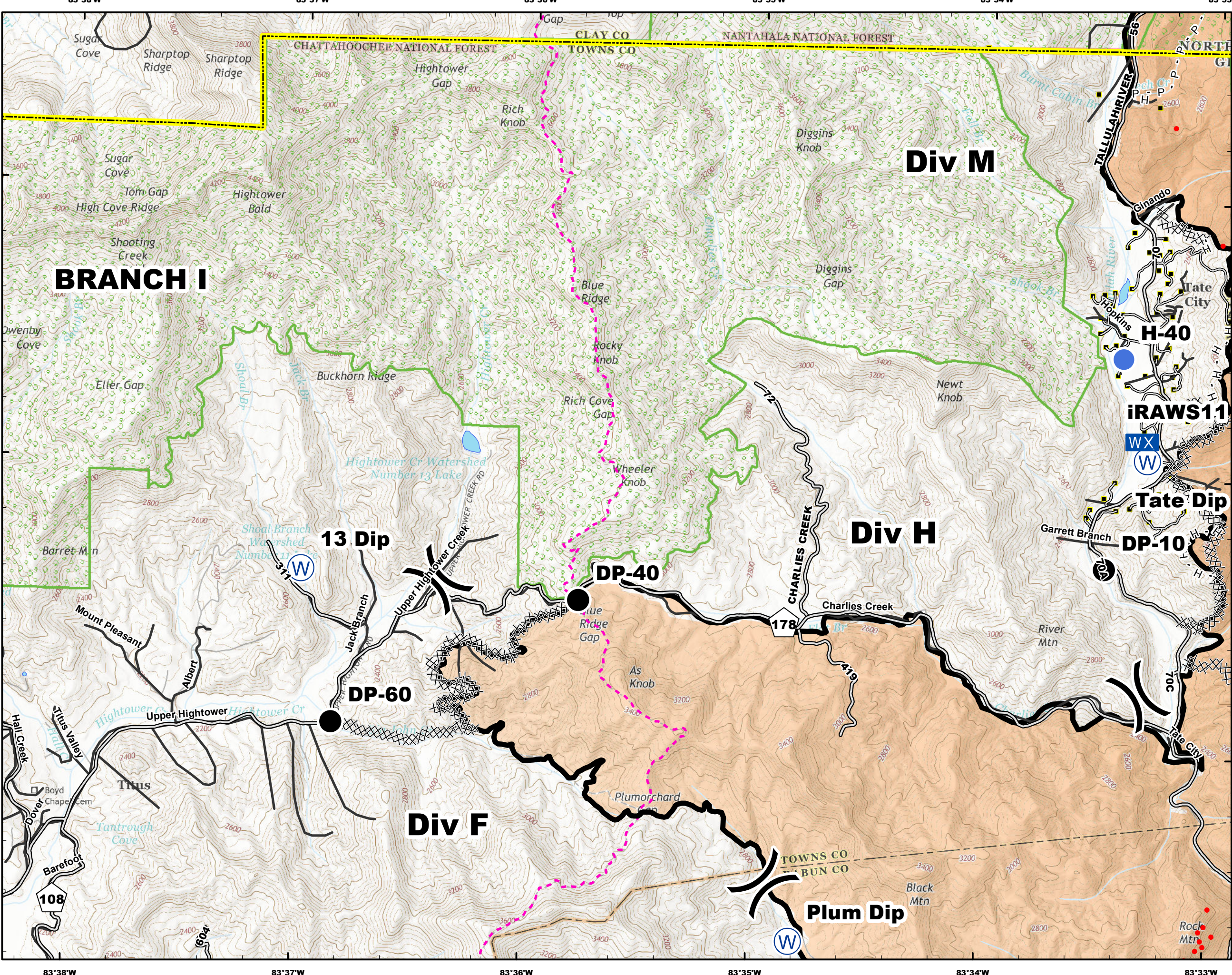
- Structures
- Helispot
- Drop Point
- Staging
- Dip
- RAWs
- State Line
- Appalachian Trail
- Completed Dozer Line
- P - P Prepped Line
- H - H Hand Line
- Completed Line
- Uncontrolled Fire Edge
- Wilderness
- IR Isolated Heat Source
- IR Intense Heat
- IR Scattered Heat



Datum NAD83



NB 11/27/16 0100

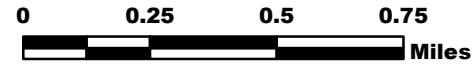


ROCK MOUNTAIN GA-CHF-160079

IAP Tiles

11/27/16

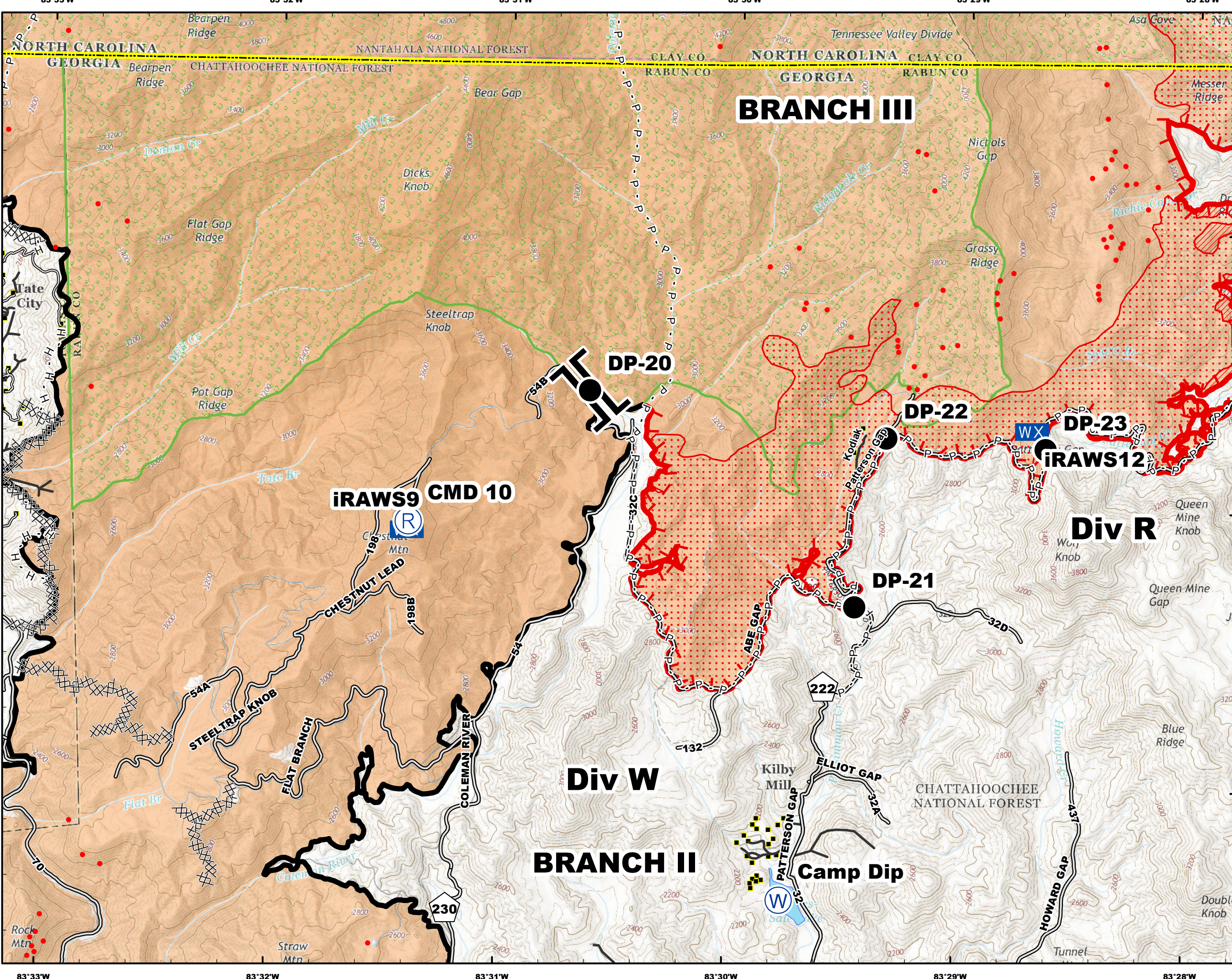
IR Perimeter as of
11/26/16 2205 - 22,371 ac.



A1	A2	A3
B1	B2	B3
C1	C2	C3
D1	D2	D3

- Structures
- Helispot
- Drop Point
- Staging
- Dip
- RAWs
- State Line
- Appalachian Trail
- Completed Dozer Line
- Prepped Line
- Hand Line
- Completed Line
- Uncontrolled Fire Edge
- Wilderness
- IR Isolated Heat Source
- IR Intense Heat
- IR Scattered Heat



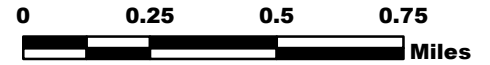


ROCK MOUNTAIN GA-CHF-160079

IAP Tiles

11/27/16

**IR Perimeter as of
11/26/16 2205 - 22,371 ac.**



A1	A2	A3
B1	B2	B3
C1	C2	C3
D1	D2	D3

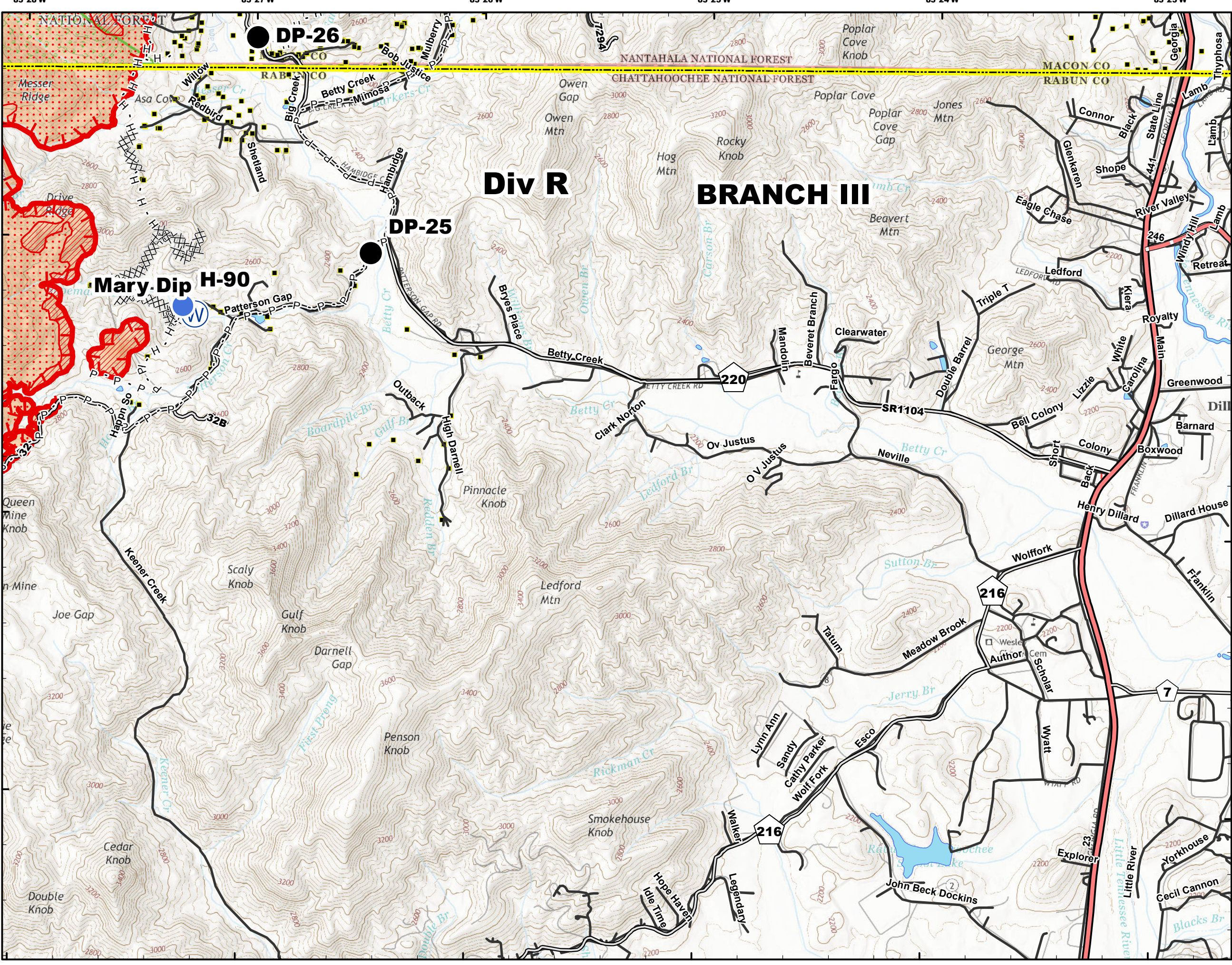
- Structures
- Helispot
- Drop Point
- Staging
- Dip
- RAWS
- State Line
- Appalachian Trail
- Completed Dozer Line
- P - P Prepped Line
- H - H Hand Line
- Completed Line
- Uncontrolled Fire Edge
- Wilderness
- IR Isolated Heat Source
- IR Intense Heat
- IR Scattered Heat



Datum NAD83



NB 11/27/16 0100

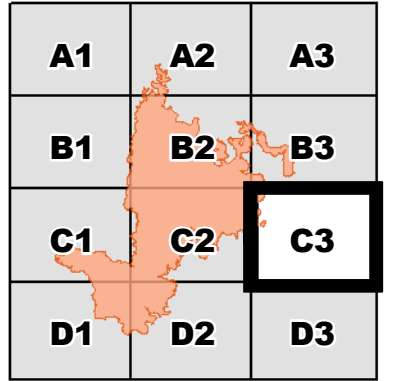
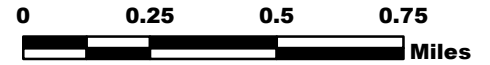


ROCK MOUNTAIN GA-CHF-160079

IAP Tiles

11/27/16

IR Perimeter as of
11/26/16 2205 - 22,371 ac.



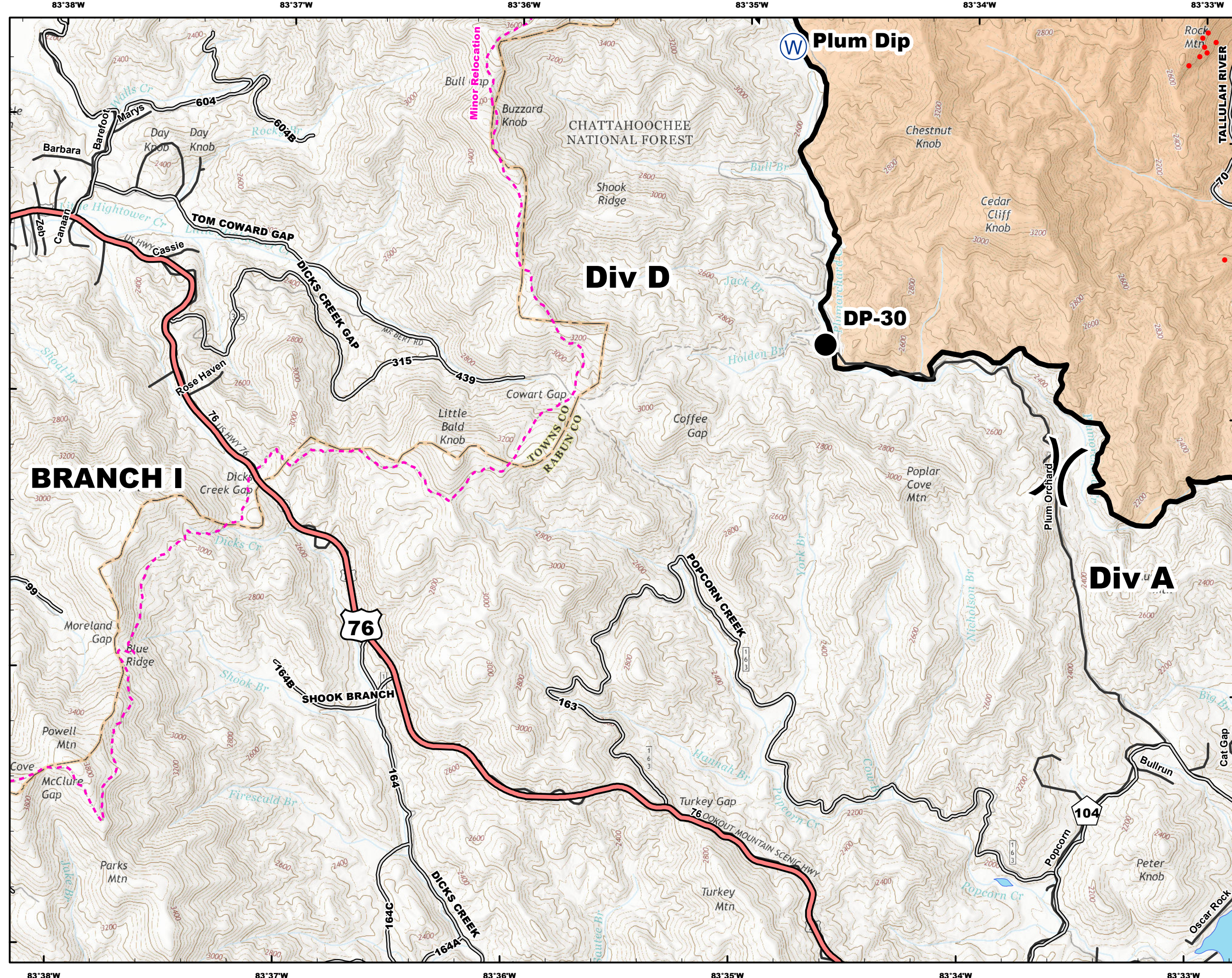
- Structures
- Helispot
- Drop Point
- Staging
- Dip
- RAWs
- State Line
- Appalachian Trail
- Completed Dozer Line
- P - P Prepped Line
- H - H Hand Line
- Completed Line
- Uncontrolled Fire Edge
- Wilderness
- IR Isolated Heat Source
- IR Intense Heat
- IR Scattered Heat



Datum NAD83



NB 11/27/16 0100

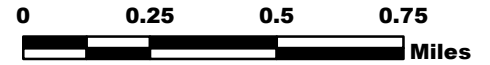


ROCK MOUNTAIN GA-CHF-160079

IAP Tiles

11/27/16

IR Perimeter as of
11/26/16 2205 - 22,371 ac.



A1	A2	A3
B1	B2	B3
C1	C2	C3
D1	D2	D3

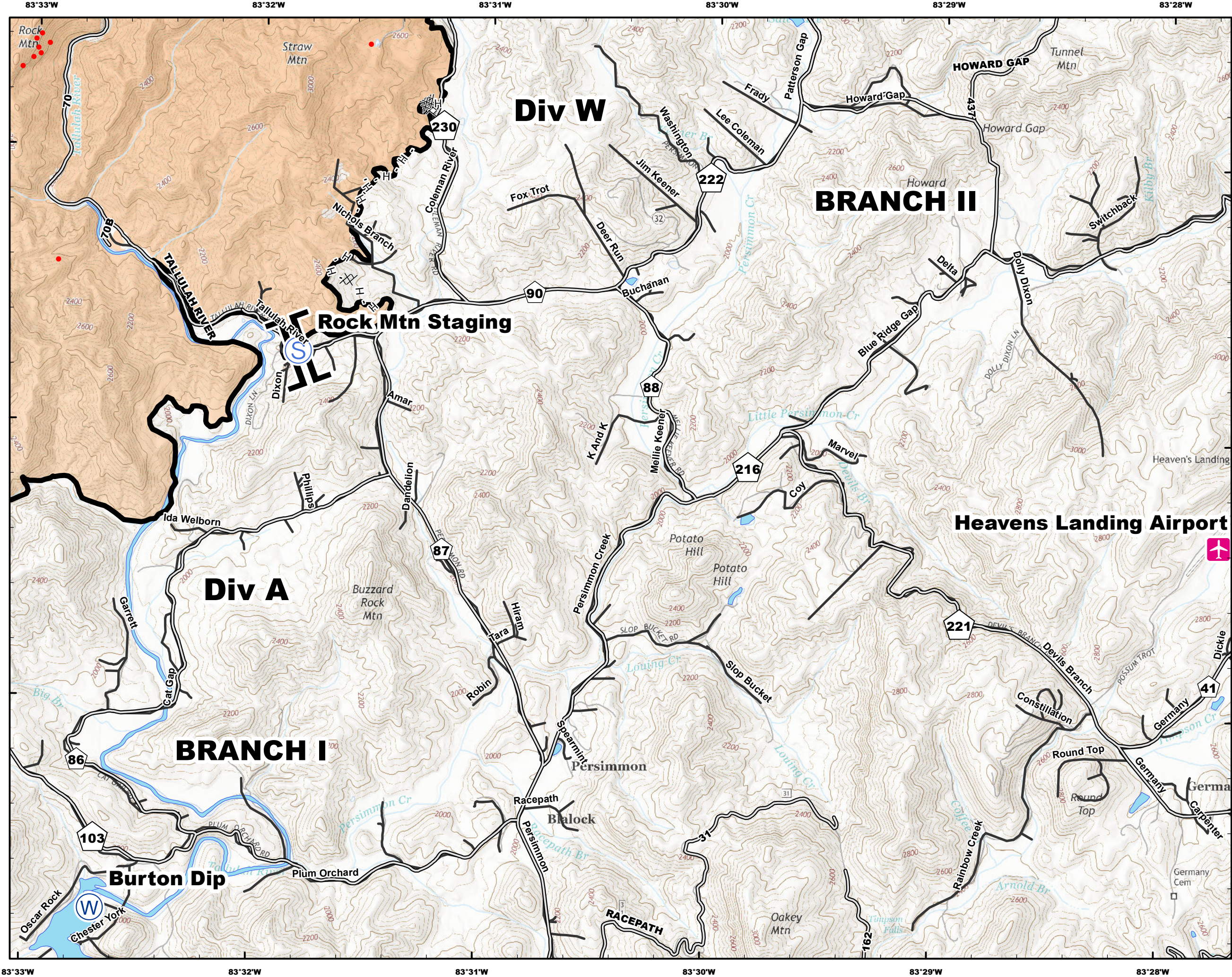
- Structures
- Helispot
- Drop Point
- Staging
- Dip
- RAWs
- State Line
- Appalachian Trail
- Completed Dozer Line
- P - P Prepped Line
- H - H Hand Line
- Completed Line
- Uncontrolled Fire Edge
- Wilderness
- IR Isolated Heat Source
- IR Intense Heat
- IR Scattered Heat



Datum NAD83



NB 11/27/16 0100

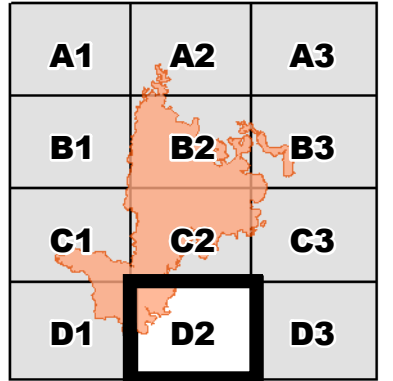
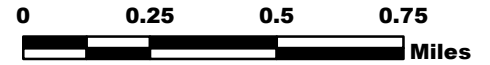


ROCK MOUNTAIN GA-CHF-160079

IAP Tiles

11/27/16

IR Perimeter as of
11/26/16 2205 - 22,371 ac.



- Structures
- Helispot
- Drop Point
- Staging
- Dip
- RAWs
- State Line
- Appalachian Trail
- Completed Dozer Line
- P - P Prepped Line
- H - H Hand Line
- Completed Line
- Uncontrolled Fire Edge
- Wilderness
- IR Isolated Heat Source
- IR Intense Heat
- IR Scattered Heat



Datum NAD83



NB 11/27/16 0100

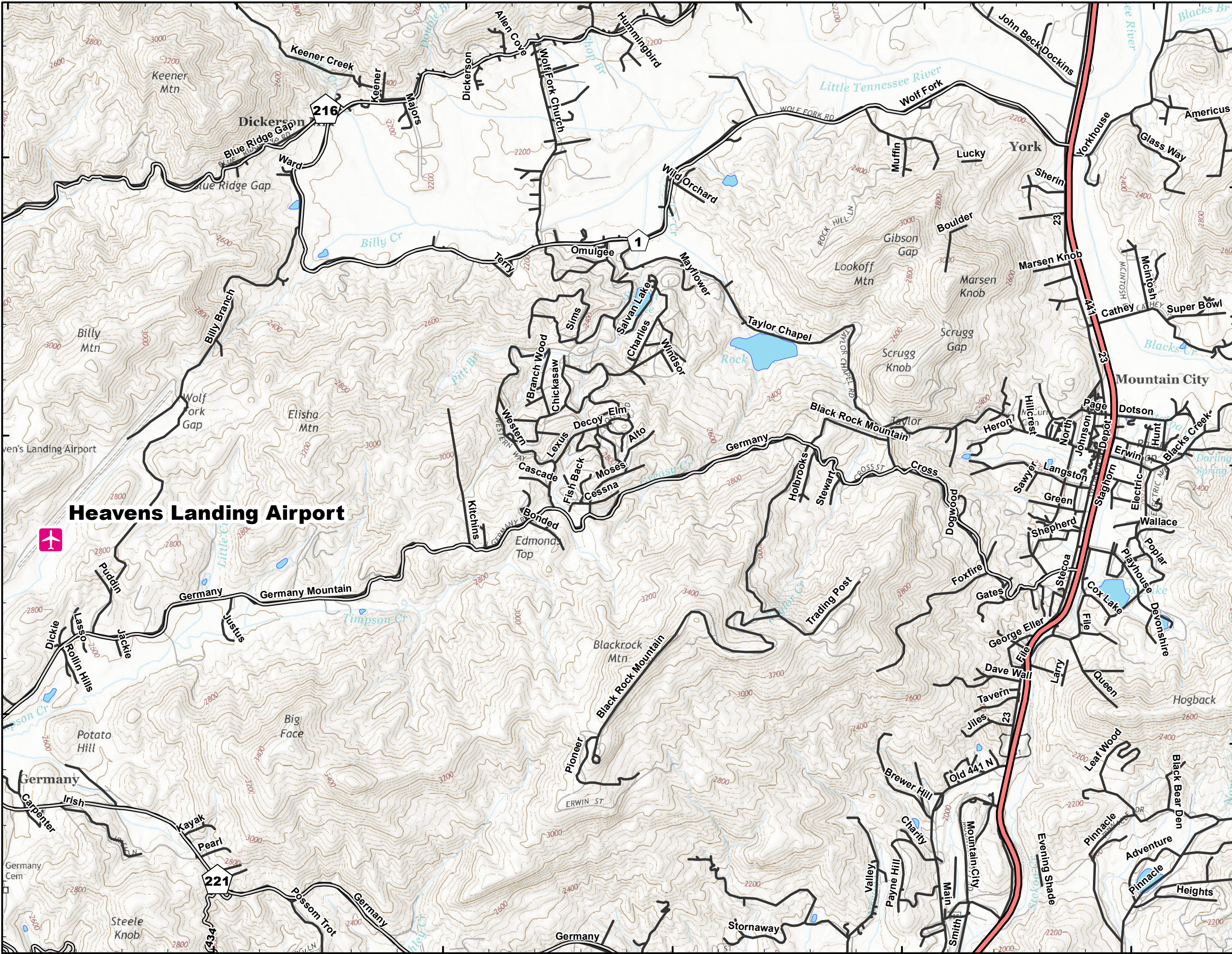
83°28'W 83°27'W 83°26'W 83°25'W 83°24'W 83°23'W

34°56'N

34°55'N

34°54'N

83°27'W 83°26'W 83°25'W 83°24'W 83°23'W

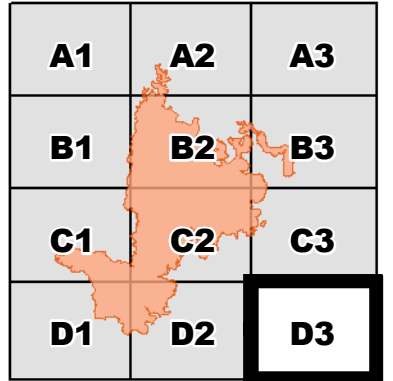
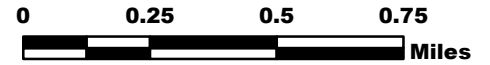


ROCK MOUNTAIN GA-CHF-160079

IAP Tiles

11/27/16

IR Perimeter as of
11/26/16 2205 - 22,371 ac.



- Structures
- Helispot
- Drop Point
- Staging
- Dip
- RAWs
- State Line
- Appalachian Trail
- Completed Dozer Line
- P - P Prepped Line
- H - H Hand Line
- Completed Line
- Uncontrolled Fire Edge
- Wilderness
- IR Isolated Heat Source
- IR Intense Heat
- IR Scattered Heat

