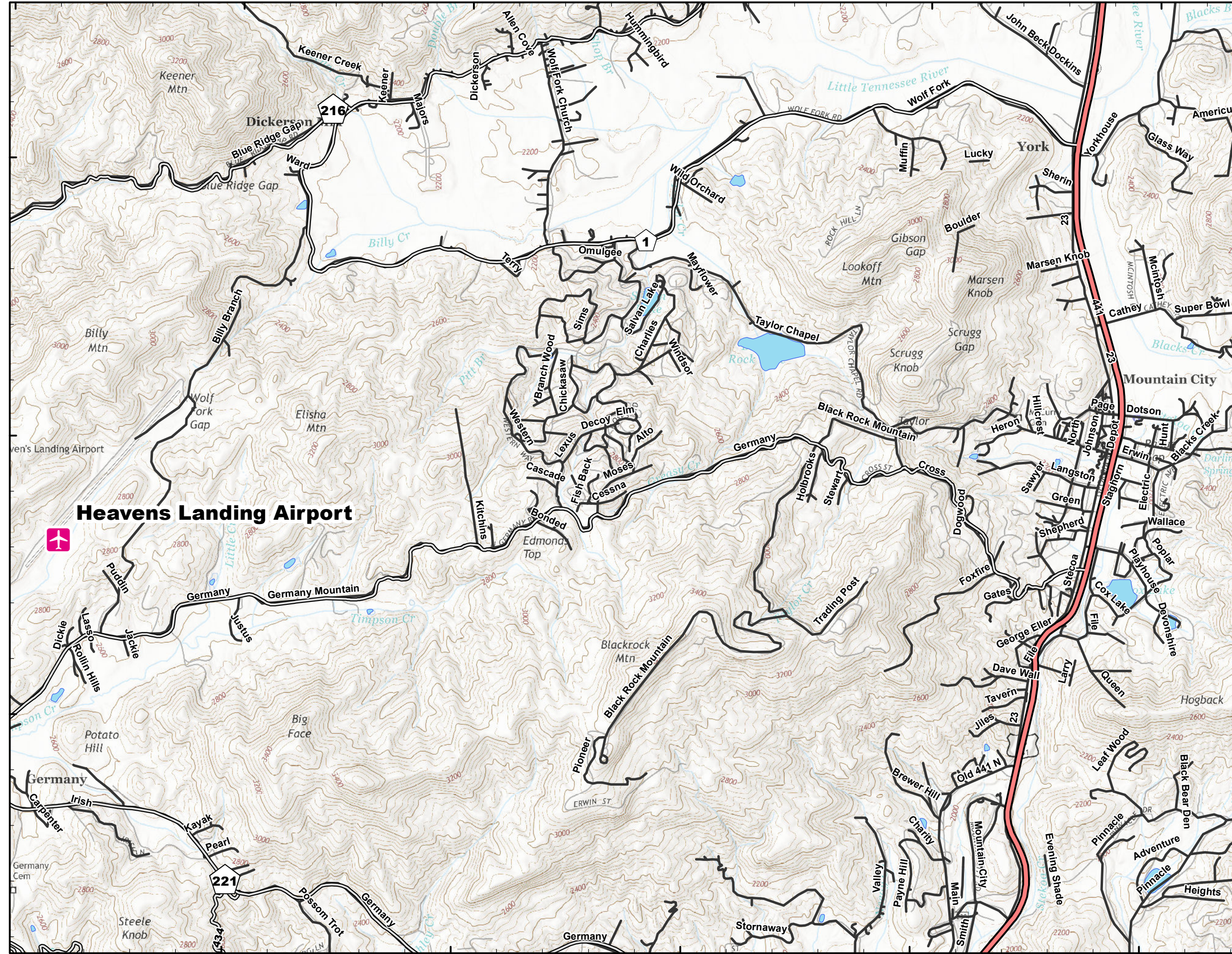


83°28'W 83°27'W 83°26'W 83°25'W 83°24'W 83°23'W



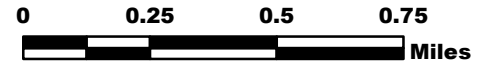
83°27'W 83°26'W 83°25'W 83°24'W 83°23'W

ROCK MOUNTAIN GA-CHF-160079

IAP Tiles

11/27/16

IR Perimeter as of
11/26/16 2205 - 22,371 ac.



| | | |
|----|----|----|
| A1 | A2 | A3 |
| B1 | B2 | B3 |
| C1 | C2 | C3 |
| D1 | D2 | D3 |

- Structures
- Helispot
- Drop Point
- Staging
- Dip
- RAWs
- State Line
- Appalachian Trail
- Completed Dozer Line
- P - P Prepped Line
- H - H Hand Line
- Completed Line
- Uncontrolled Fire Edge
- Wilderness
- IR Isolated Heat Source
- IR Intense Heat
- IR Scattered Heat



Datum NAD83



NB 11/27/16 0100