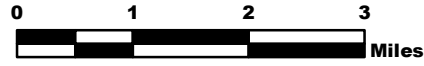


83°40'W 83°38'W 83°36'W 83°34'W 83°32'W 83°30'W 83°28'W 83°26'W 83°24'W

# ROCK MOUNTAIN GA-CHF-160079

## Air Ops Map 11/28/16

IR Perimeter as of 11/27/16 1200 - 23,250 ac.

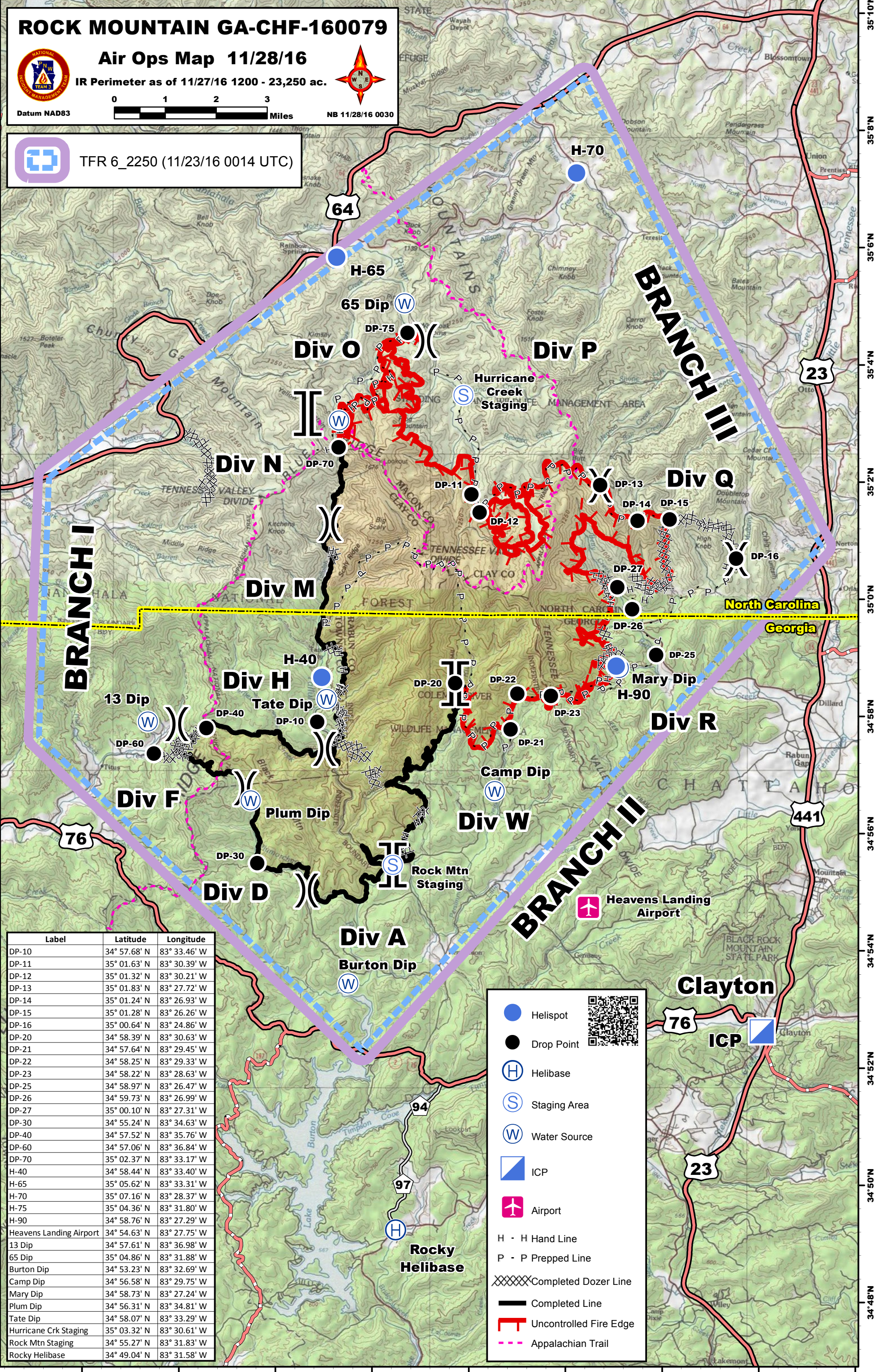


Datum NAD83

NB 11/28/16 0030



TFR 6\_2250 (11/23/16 0014 UTC)



Label	Latitude	Longitude
DP-10	34° 57.68' N	83° 33.46' W
DP-11	35° 01.63' N	83° 30.39' W
DP-12	35° 01.32' N	83° 30.21' W
DP-13	35° 01.83' N	83° 27.72' W
DP-14	35° 01.24' N	83° 26.93' W
DP-15	35° 01.28' N	83° 26.26' W
DP-16	35° 00.64' N	83° 24.86' W
DP-20	34° 58.39' N	83° 30.63' W
DP-21	34° 57.64' N	83° 29.45' W
DP-22	34° 58.25' N	83° 29.33' W
DP-23	34° 58.22' N	83° 28.63' W
DP-25	34° 58.97' N	83° 26.47' W
DP-26	34° 59.73' N	83° 26.99' W
DP-27	35° 00.10' N	83° 27.31' W
DP-30	34° 55.24' N	83° 34.63' W
DP-40	34° 57.52' N	83° 35.76' W
DP-60	34° 57.06' N	83° 36.84' W
DP-70	35° 02.37' N	83° 33.17' W
H-40	34° 58.44' N	83° 33.40' W
H-65	35° 05.62' N	83° 33.31' W
H-70	35° 07.16' N	83° 28.37' W
H-75	35° 04.36' N	83° 31.80' W
H-90	34° 58.76' N	83° 27.29' W
Heavens Landing Airport	34° 54.63' N	83° 27.75' W
13 Dip	34° 57.61' N	83° 36.98' W
65 Dip	35° 04.86' N	83° 31.88' W
Burton Dip	34° 53.23' N	83° 32.69' W
Camp Dip	34° 56.58' N	83° 29.75' W
Mary Dip	34° 58.73' N	83° 27.24' W
Plum Dip	34° 56.31' N	83° 34.81' W
Tate Dip	34° 58.07' N	83° 33.29' W
Hurricane Crk Staging	35° 03.32' N	83° 30.61' W
Rock Mtn Staging	34° 55.27' N	83° 31.83' W
Rocky Helibase	34° 49.04' N	83° 31.58' W

- Helispot
- Drop Point
- H Helibase
- S Staging Area
- W Water Source
- ▣ ICP
- ✈ Airport
- H - H Hand Line
- P - P Prepped Line
- XXXXX Completed Dozer Line
- Completed Line
- Uncontrolled Fire Edge
- Appalachian Trail

83°38'W 83°36'W 83°34'W 83°32'W 83°30'W 83°28'W 83°26'W 83°24'W 83°22'W

35°8'N 35°6'N 35°4'N 35°2'N 35°0'N 35°58'N 35°56'N 35°54'N 35°52'N 35°50'N 35°48'N 35°46'N 35°44'N 35°42'N 35°40'N 35°38'N 35°36'N 35°34'N 35°32'N 35°30'N 35°28'N 35°26'N 35°24'N 35°22'N

35°10'N 35°8'N 35°6'N 35°4'N 35°2'N 35°0'N 35°58'N 35°56'N 35°54'N 35°52'N 35°50'N 35°48'N 35°46'N 35°44'N 35°42'N 35°40'N 35°38'N 35°36'N 35°34'N 35°32'N 35°30'N 35°28'N 35°26'N 35°24'N 35°22'N