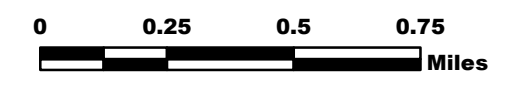


ROCK MOUNTAIN GA-CHF-160079

IAP Tiles

11/28/16

IR Perimeter as of
11/27/16 1200 - 23,250 ac.



A1	A2	A3
B1	B2	B3
C1	C2	C3
D1	D2	D3

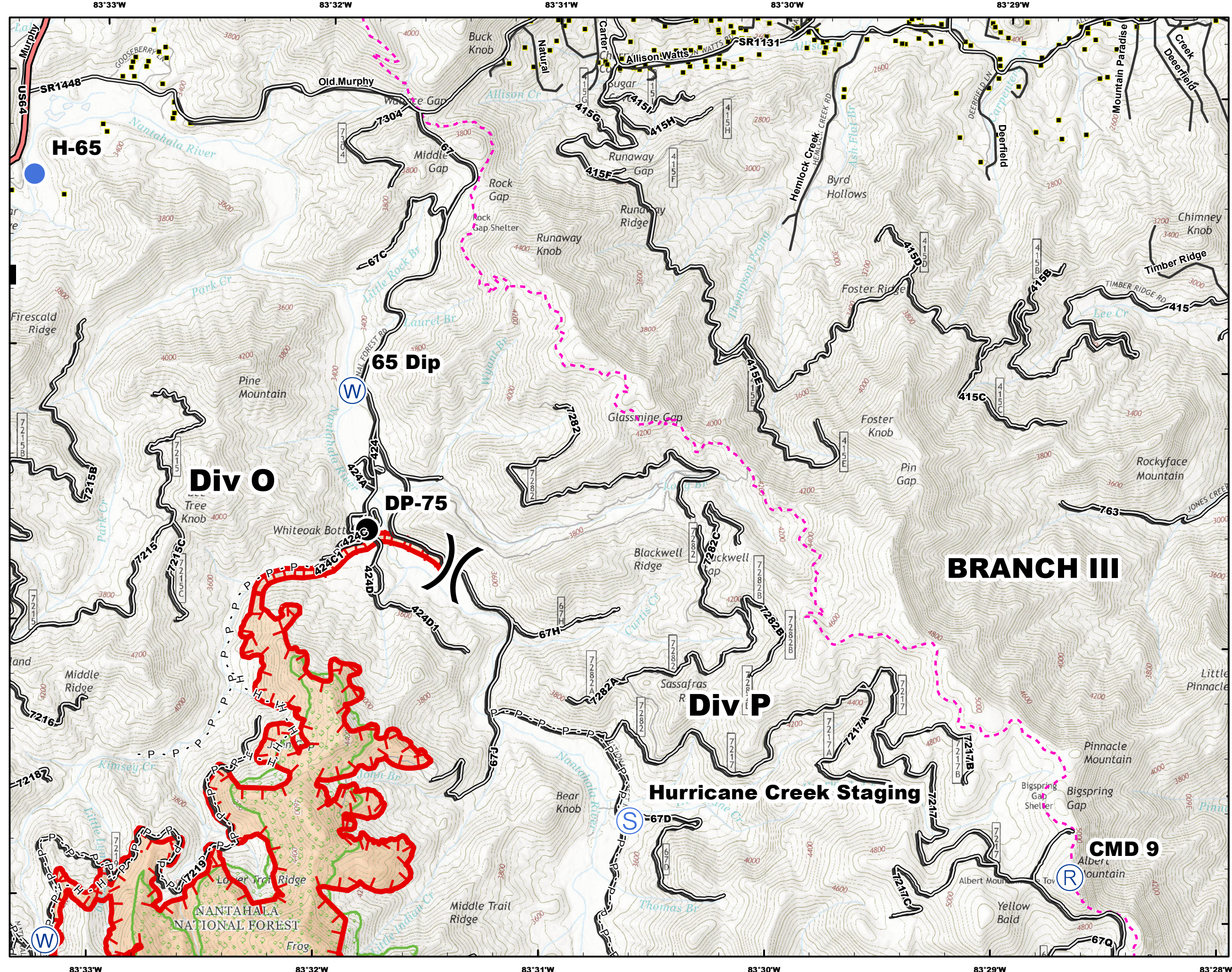
- Structures
- Helispot
- Drop Point
- Staging
- Dip
- RAWs
- State Line
- Appalachian Trail
- Completed Dozer Line
- P - P Prepped Line
- H - H Hand Line
- Completed Line
- Uncontrolled Fire Edge
- Wilderness



Datum NAD83



NB 11/27/16 2230

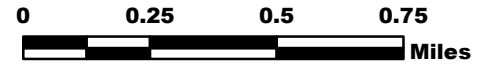


ROCK MOUNTAIN GA-CHF-160079

IAP Tiles

11/28/16

IR Perimeter as of
11/27/16 1200 - 23,250 ac.



A1	A2	A3
B1	B2	B3
C1	C2	C3
D1	D2	D3

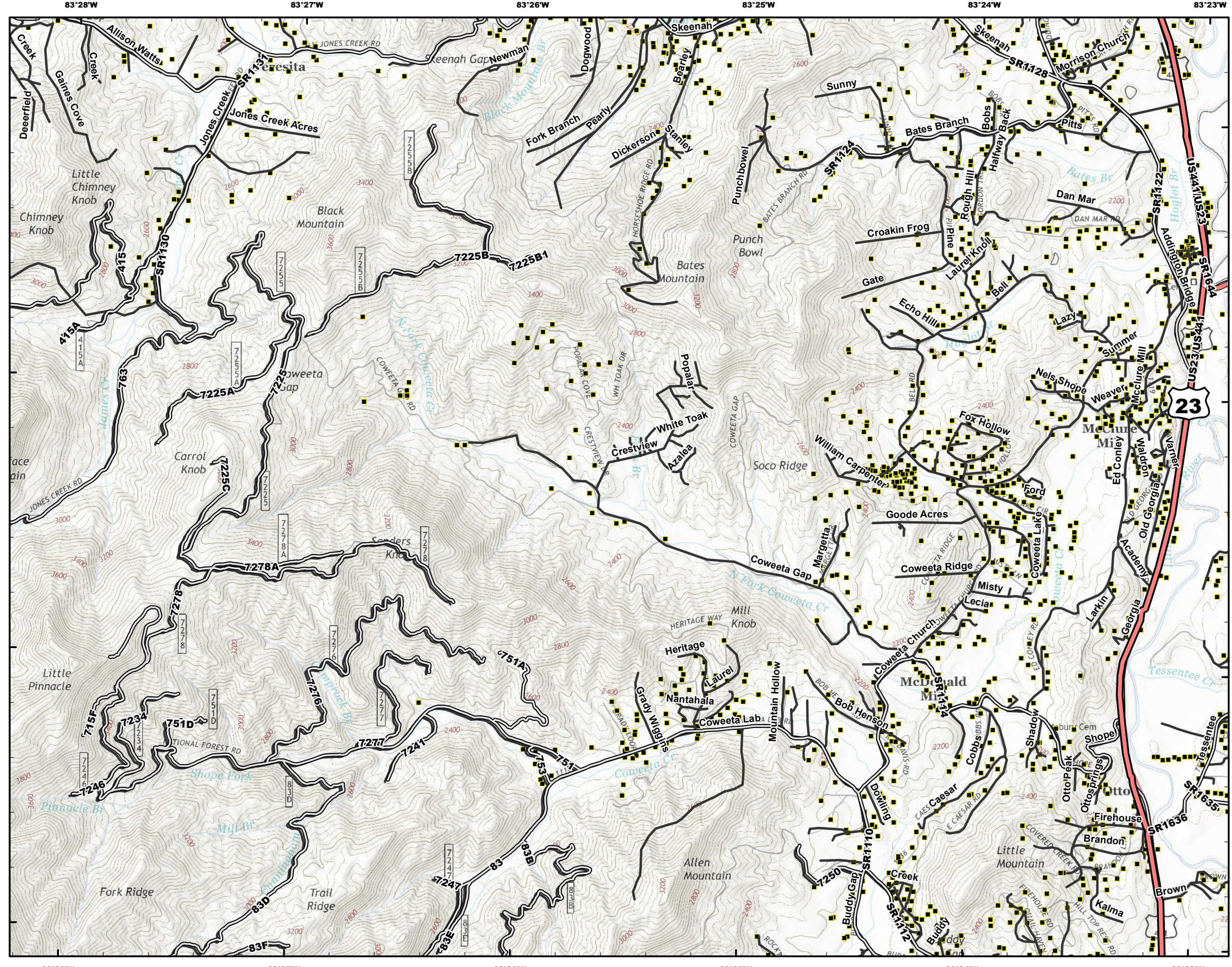
- Structures
- Helispot
- Drop Point
- Staging
- Dip
- RAWs
- State Line
- Appalachian Trail
- Completed Dozer Line
- Prepped Line
- Hand Line
- Completed Line
- Uncontrolled Fire Edge
- Wilderness



Datum NAD83



NB 11/27/16 2230

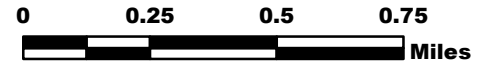


ROCK MOUNTAIN GA-CHF-160079

IAP Tiles

11/28/16

IR Perimeter as of
11/27/16 1200 - 23,250 ac.



A1	A2	A3
B1	B2	B3
C1	C2	C3
D1	D2	D3

- Structures
- Helispot
- Drop Point
- Staging
- Dip
- RAWs
- State Line
- Appalachian Trail
- Completed Dozer Line
- P - P Prepped Line
- H - H Hand Line
- Completed Line
- Uncontrolled Fire Edge
- Wilderness



Datum NAD83

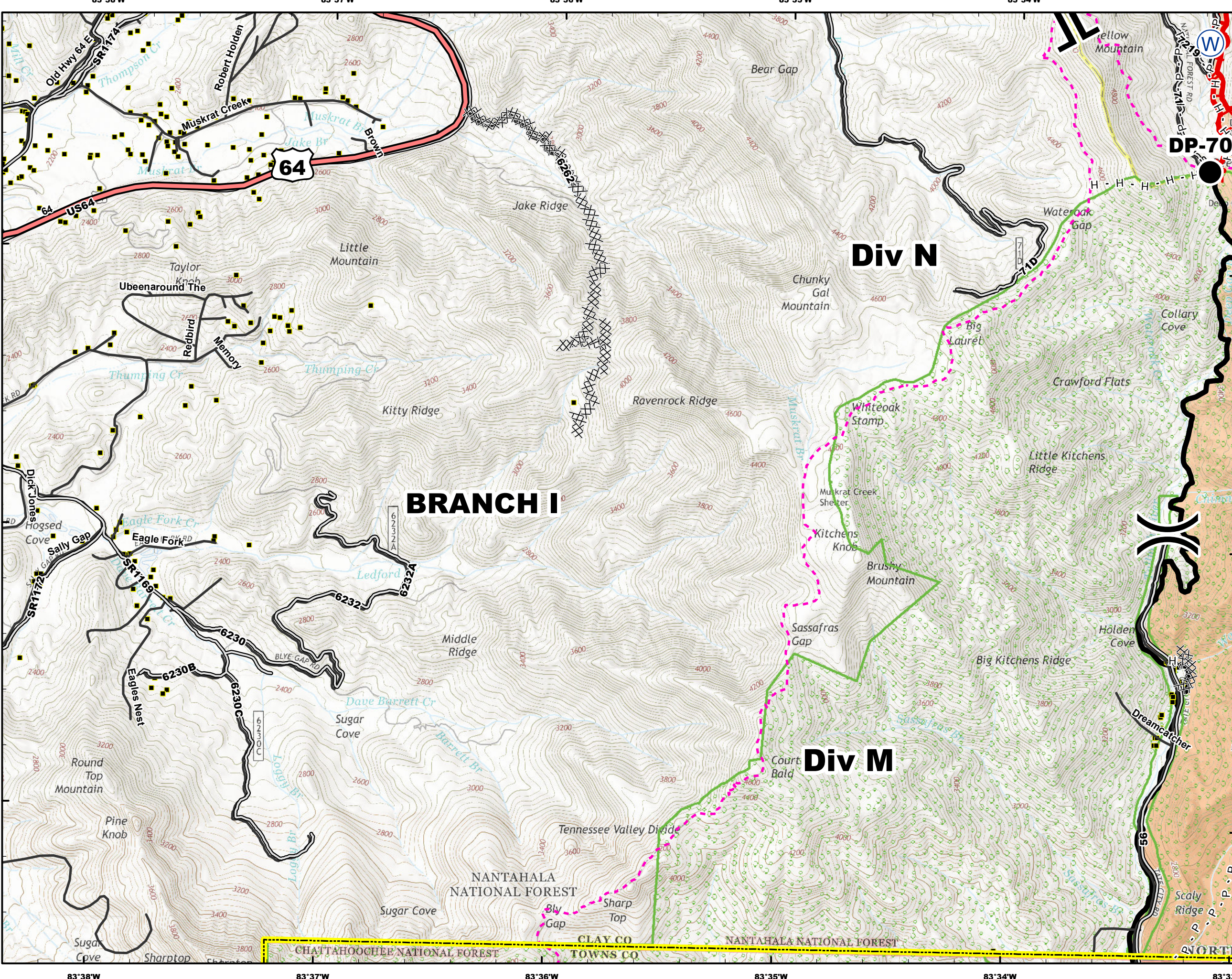


NB 11/27/16 2230

83°28'W 83°27'W 83°26'W 83°25'W 83°24'W 83°23'W

83°28'W 83°27'W 83°26'W 83°25'W 83°24'W 83°23'W

35°6'N
35°5'N
35°4'N
35°3'N

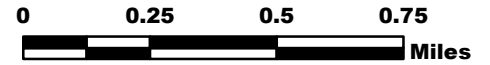


ROCK MOUNTAIN GA-CHF-160079

IAP Tiles

11/28/16

IR Perimeter as of
11/27/16 1200 - 23,250 ac.



A1	A2	A3
B1	B2	B3
C1	C2	C3
D1	D2	D3

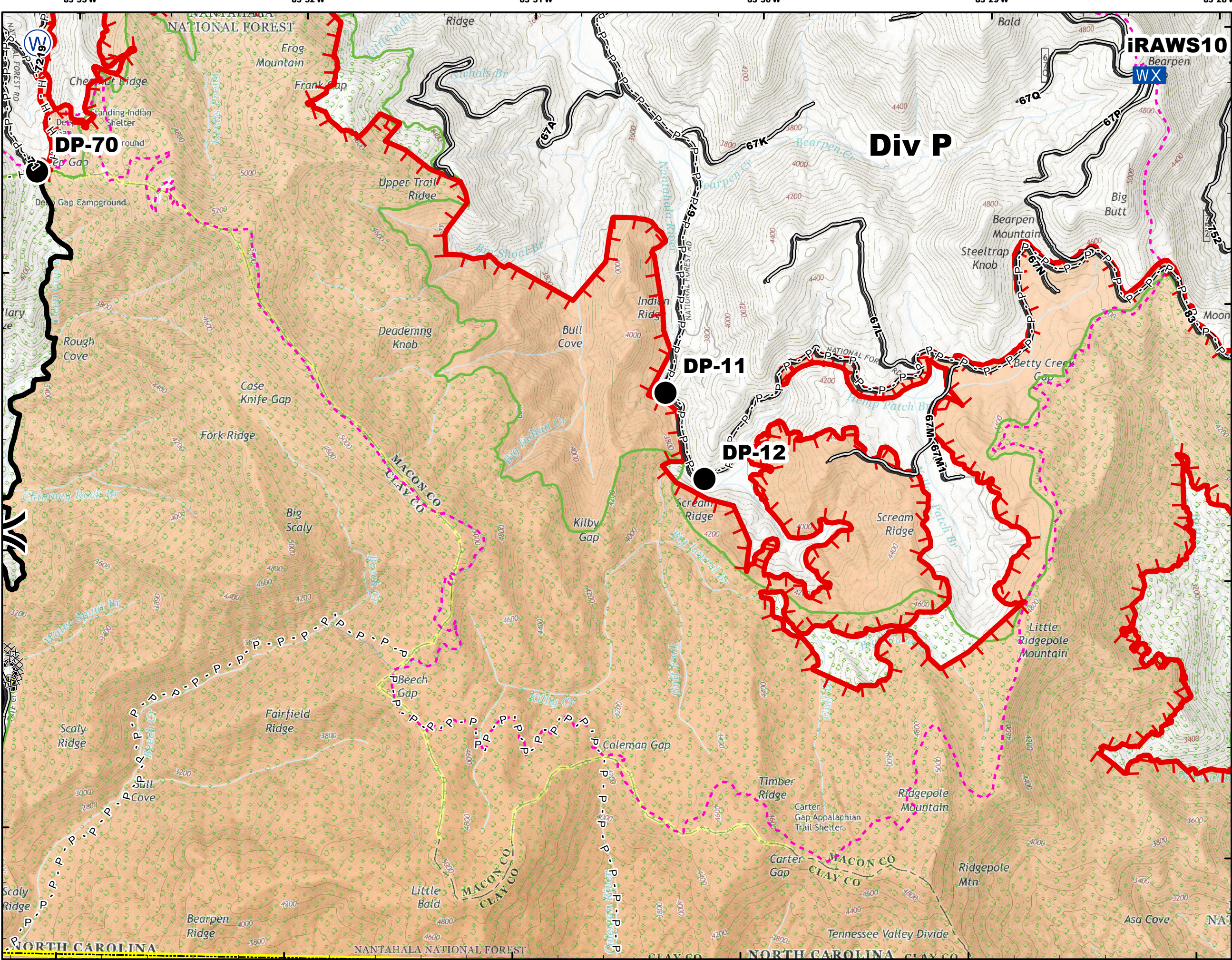
- Structures
- Helispot
- Drop Point
- Staging
- Dip
- RAWs
- State Line
- Appalachian Trail
- Completed Dozer Line
- Prepped Line
- Hand Line
- Completed Line
- Uncontrolled Fire Edge
- Wilderness



Datum NAD83



NB 11/27/16 2230

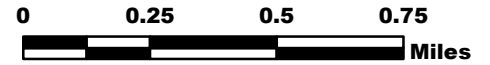


ROCK MOUNTAIN GA-CHF-160079

IAP Tiles

11/28/16

IR Perimeter as of
11/27/16 1200 - 23,250 ac.

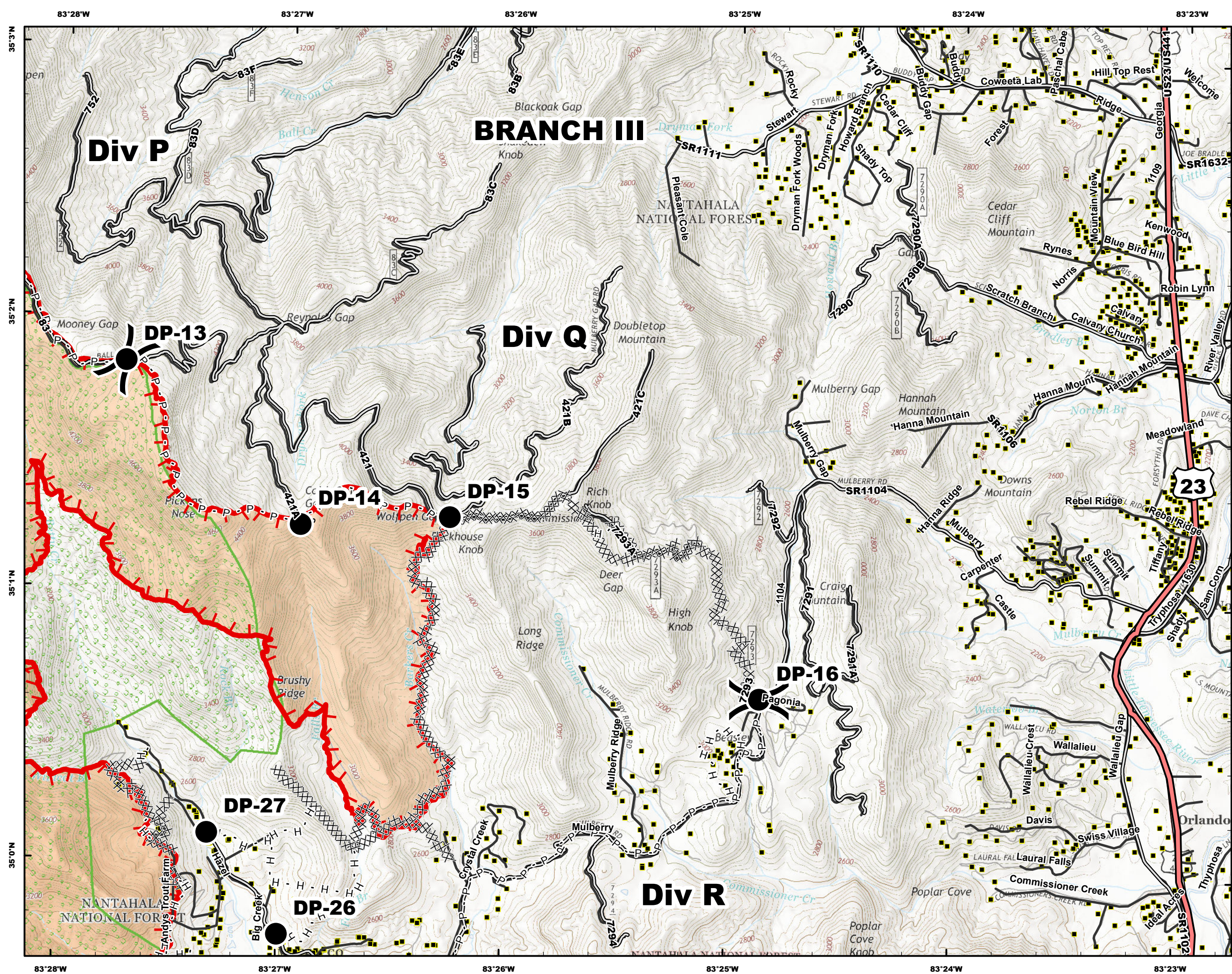


A1	A2	A3
B1	B2	B3
C1	C2	C3
D1	D2	D3

- Structures
- Helispot
- Drop Point
- Staging
- Dip
- RAWS
- State Line
- Appalachian Trail
- Completed Dozer Line
- P - P Prepped Line
- H - H Hand Line
- Completed Line
- Uncontrolled Fire Edge
- Wilderness

Datum NAD83

 NB 11/27/16 2230

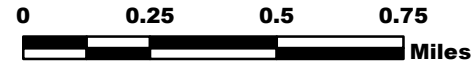


ROCK MOUNTAIN GA-CHF-160079

IAP Tiles

11/28/16

IR Perimeter as of
11/27/16 1200 - 23,250 ac.

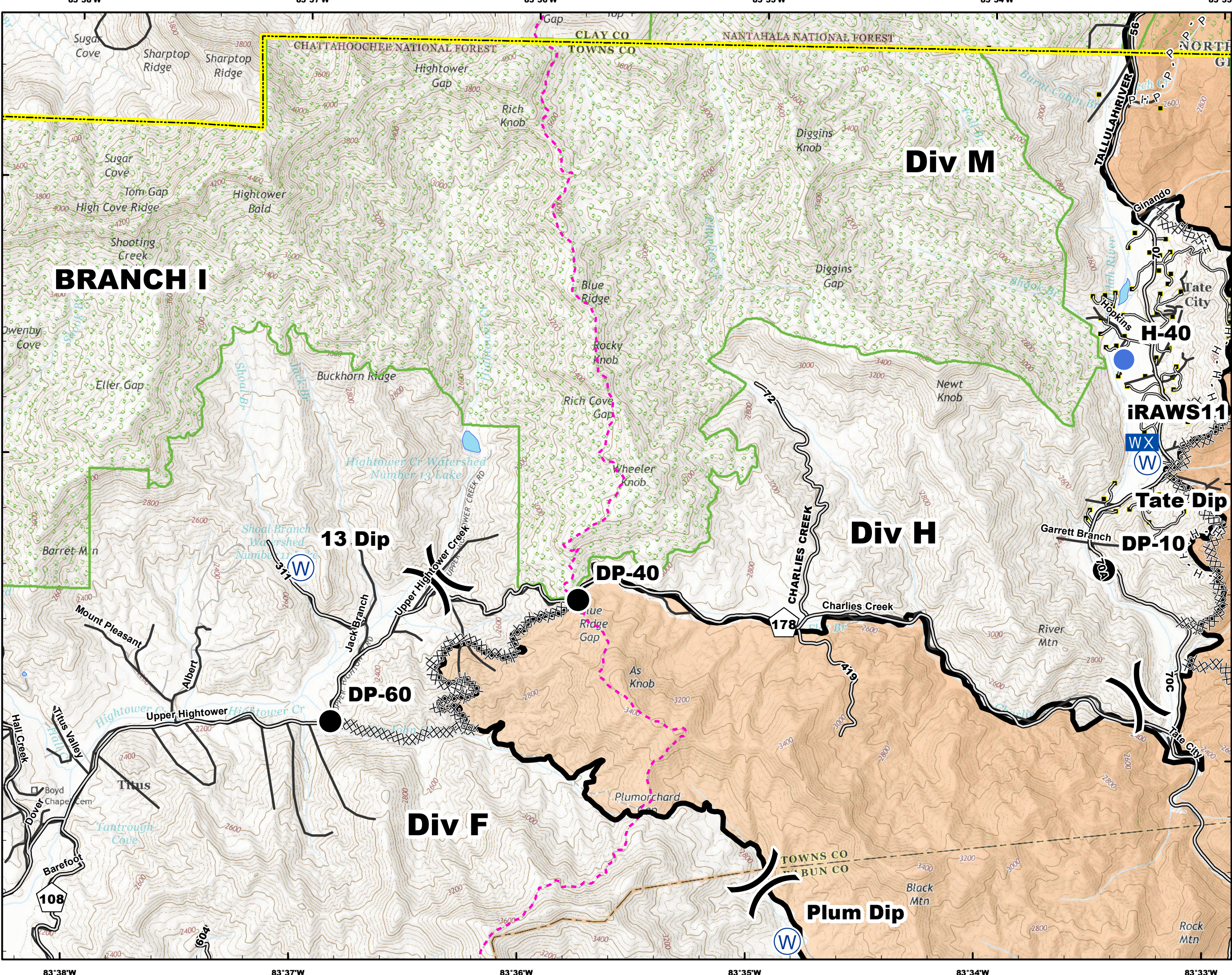


A1	A2	A3
B1	B2	B3
C1	C2	C3
D1	D2	D3

- Structures
- Helispot
- Drop Point
- Staging
- Dip
- RAWs
- State Line
- Appalachian Trail
- Completed Dozer Line
- Prepped Line
- Hand Line
- Completed Line
- Uncontrolled Fire Edge
- Wilderness

Datum NAD83

NB 11/27/16 2230

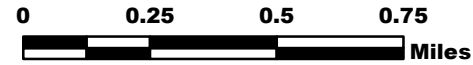


ROCK MOUNTAIN GA-CHF-160079

IAP Tiles

11/28/16

IR Perimeter as of
11/27/16 1200 - 23,250 ac.



A1	A2	A3
B1	B2	B3
C1	C2	C3
D1	D2	D3

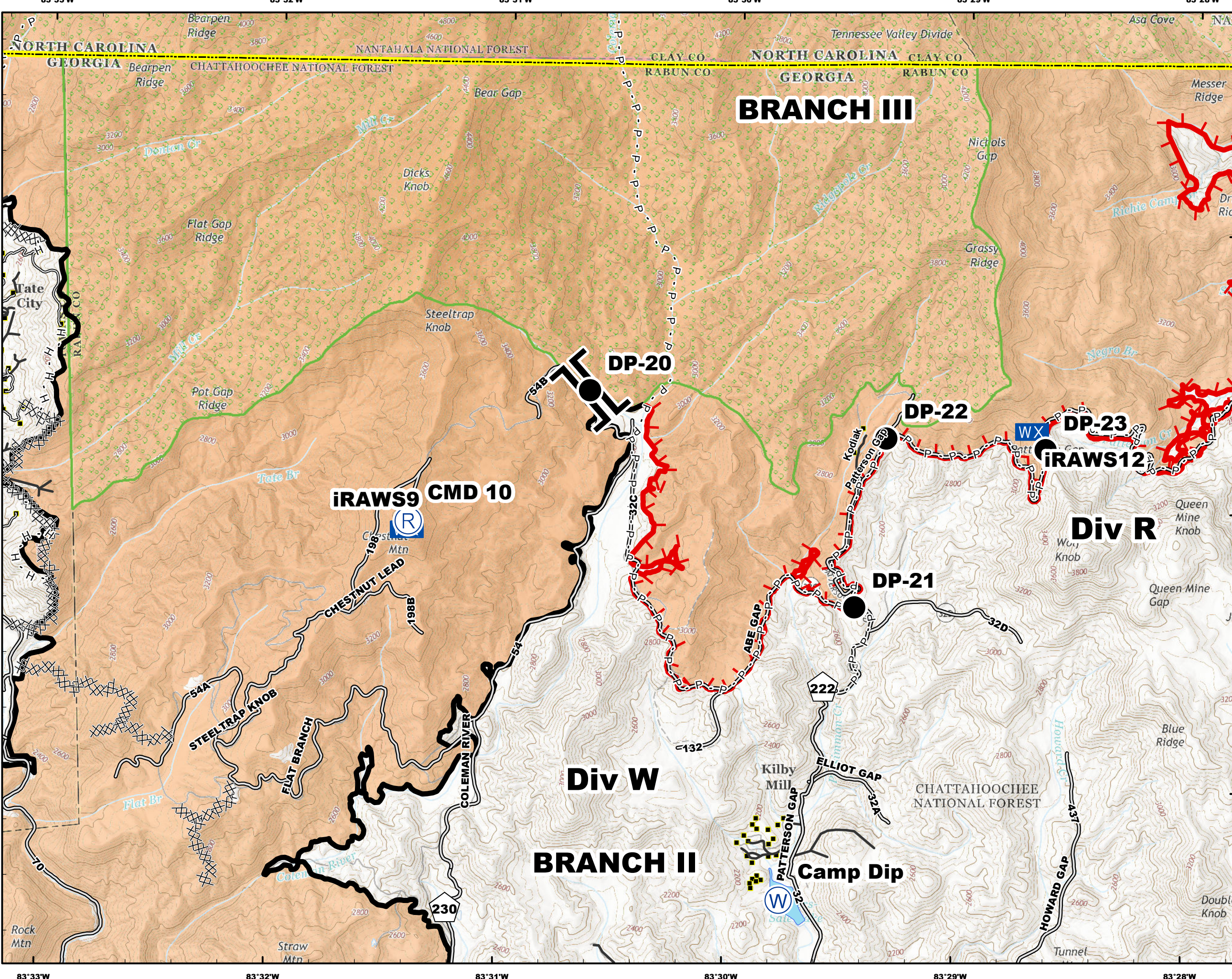
- Structures
- Helispot
- Drop Point
- Staging
- Dip
- RAWS
- State Line
- Appalachian Trail
- Completed Dozer Line
- P - P Prepped Line
- H - H Hand Line
- Completed Line
- Uncontrolled Fire Edge
- Wilderness



Datum NAD83



NB 11/27/16 2230

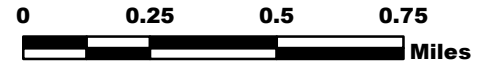


ROCK MOUNTAIN GA-CHF-160079

IAP Tiles

11/28/16

IR Perimeter as of
11/27/16 1200 - 23,250 ac.

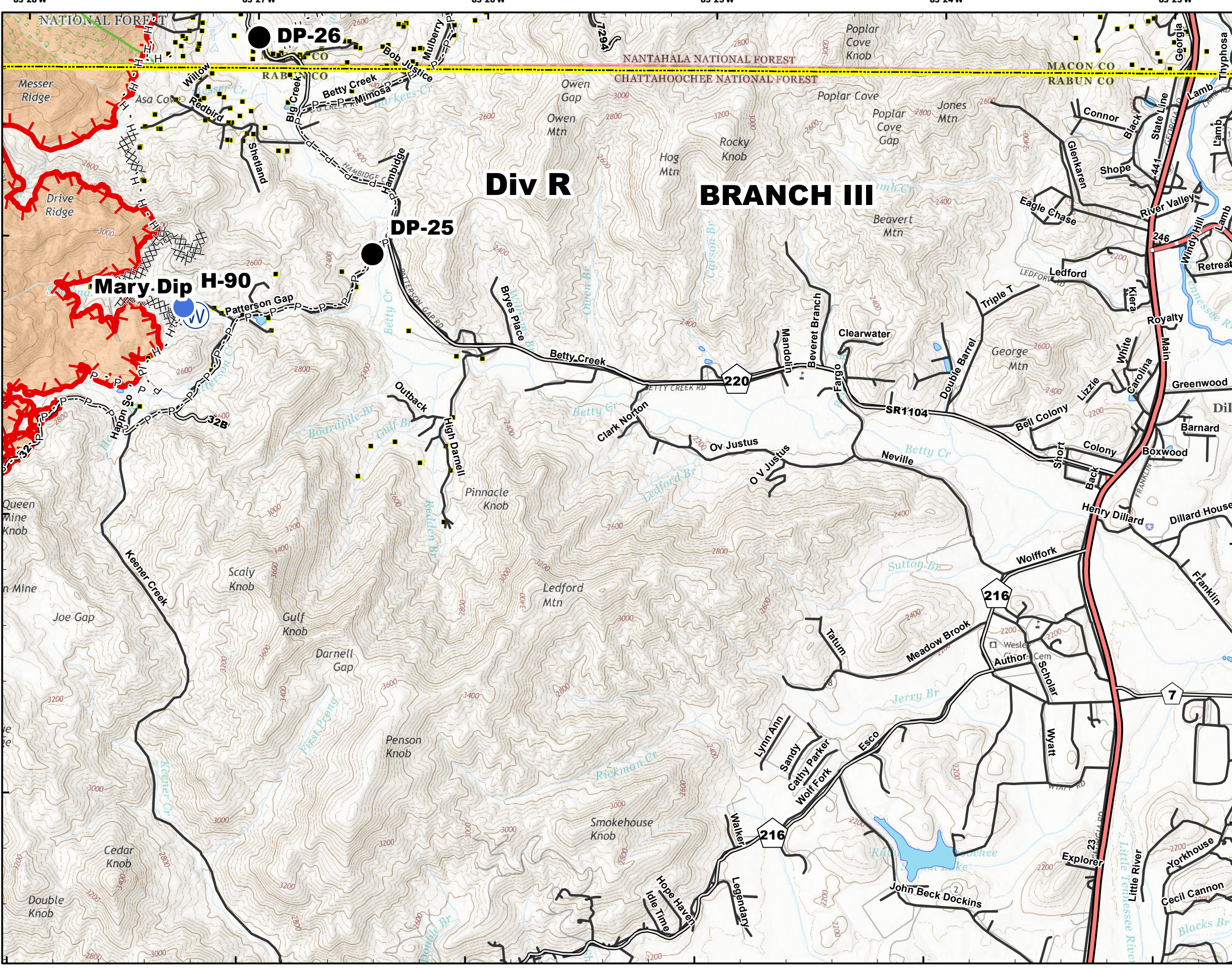


A1	A2	A3
B1	B2	B3
C1	C2	C3
D1	D2	D3

- Structures
- Helispot
- Drop Point
- Staging
- Dip
- RAWS
- State Line
- Appalachian Trail
- Completed Dozer Line
- Prepped Line
- Hand Line
- Completed Line
- Uncontrolled Fire Edge
- Wilderness

Datum NAD83

NB 11/27/16 2230

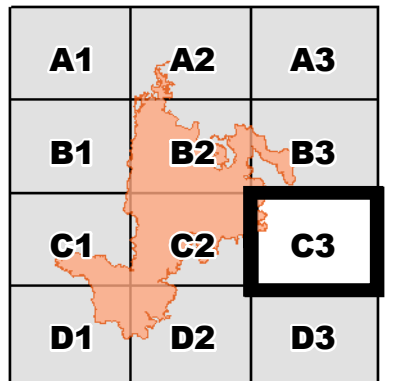
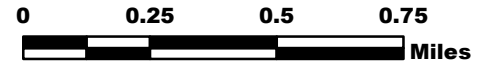


ROCK MOUNTAIN GA-CHF-160079

IAP Tiles

11/28/16

IR Perimeter as of
11/27/16 1200 - 23,250 ac.



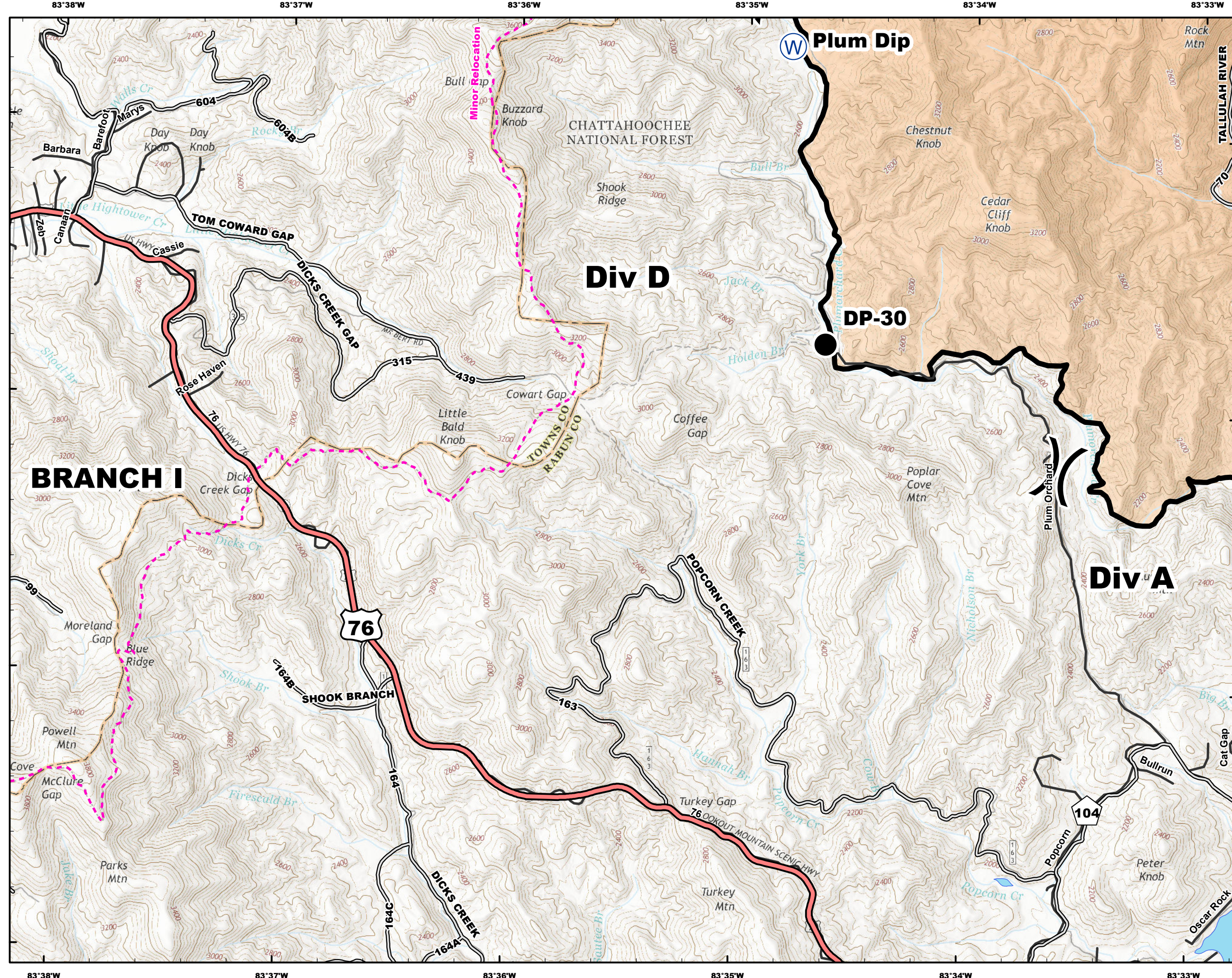
- Structures
- Helispot
- Drop Point
- Staging
- Dip
- RAWs
- State Line
- Appalachian Trail
- Completed Dozer Line
- Prepped Line
- Hand Line
- Completed Line
- Uncontrolled Fire Edge
- Wilderness



Datum NAD83



NB 11/27/16 2230

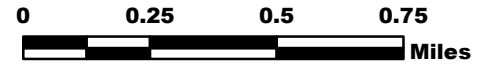


ROCK MOUNTAIN GA-CHF-160079

IAP Tiles

11/28/16

IR Perimeter as of
11/27/16 1200 - 23,250 ac.



A1	A2	A3
B1	B2	B3
C1	C2	C3
D1	D2	D3

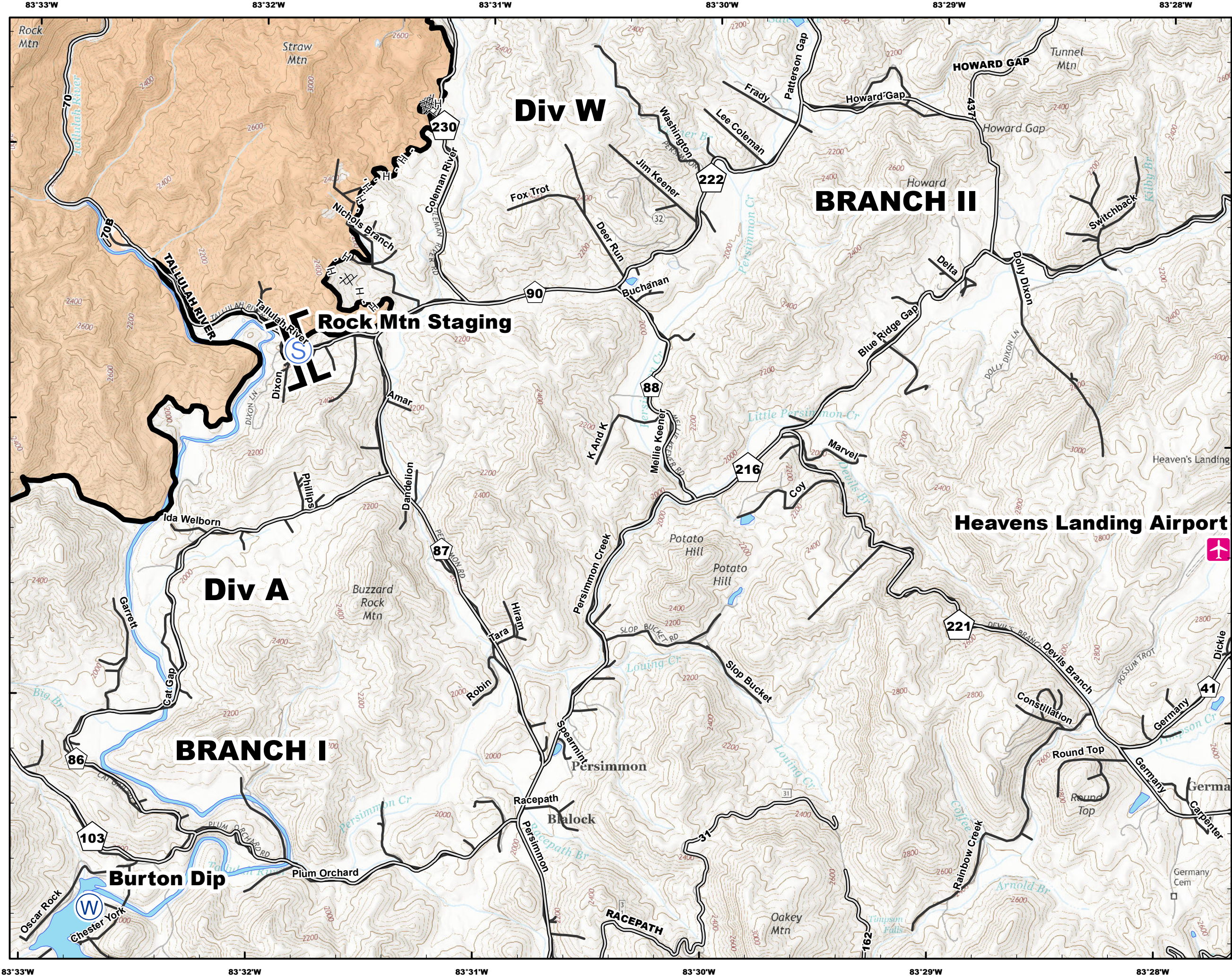
- Structures
- Helispot
- Drop Point
- Staging
- Dip
- RAWs
- State Line
- Appalachian Trail
- Completed Dozer Line
- P - P Prepped Line
- H - H Hand Line
- Completed Line
- Uncontrolled Fire Edge
- Wilderness



Datum NAD83



NB 11/27/16 2230

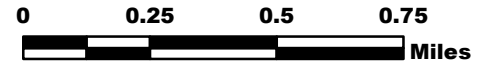


ROCK MOUNTAIN GA-CHF-160079

IAP Tiles

11/28/16

IR Perimeter as of
11/27/16 1200 - 23,250 ac.



A1	A2	A3
B1	B2	B3
C1	C2	C3
D1	D2	D3

- Structures
- Helispot
- Drop Point
- Staging
- Dip
- RAWS
- State Line
- Appalachian Trail
- Completed Dozer Line
- P - P Prepped Line
- H - H Hand Line
- Completed Line
- Uncontrolled Fire Edge
- Wilderness

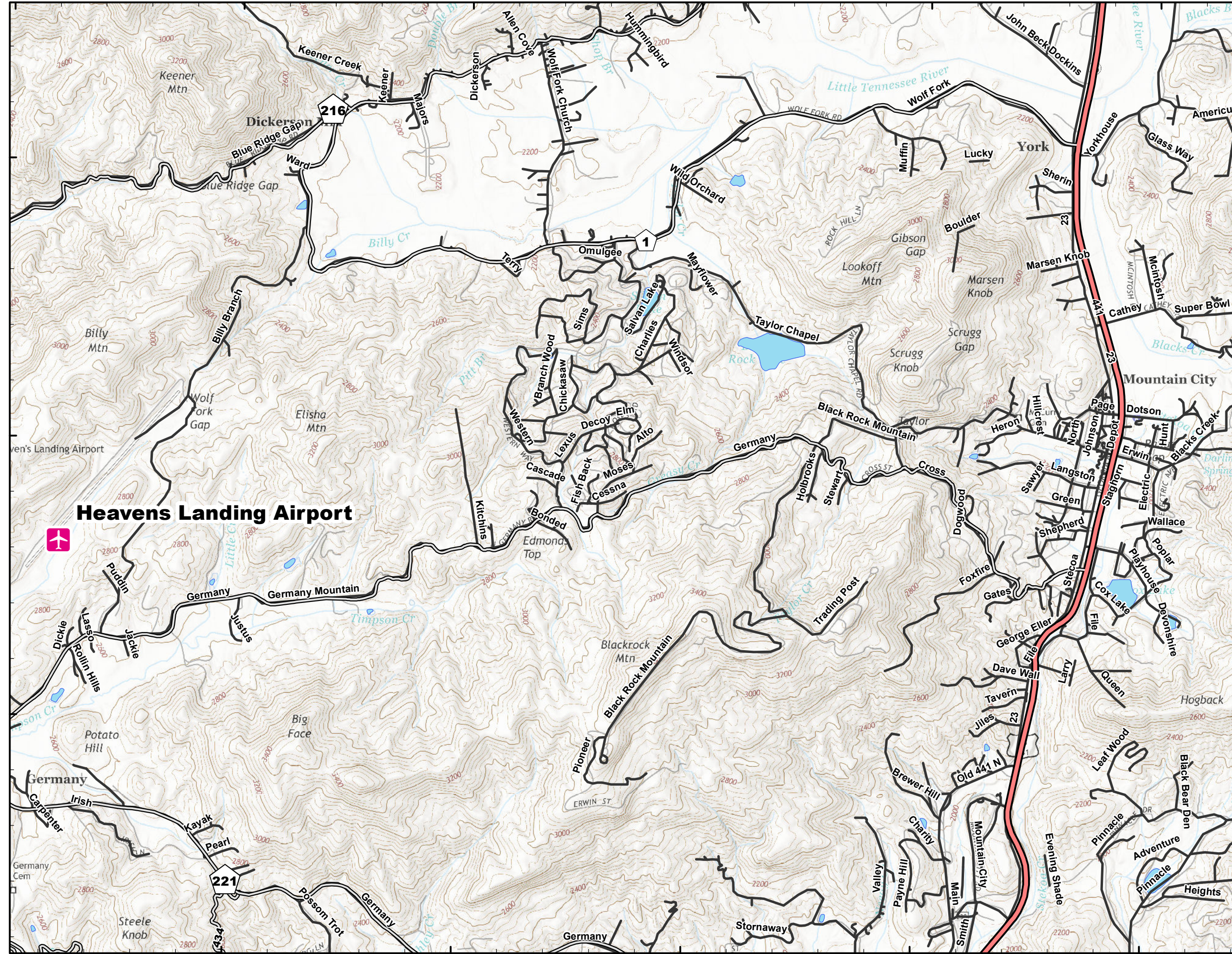


Datum NAD83



NB 11/27/16 2230

83°28'W 83°27'W 83°26'W 83°25'W 83°24'W 83°23'W



34°56'N 34°55'N 34°54'N

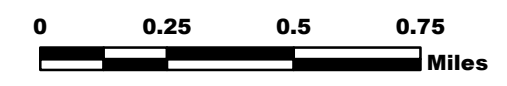
83°27'W 83°26'W 83°25'W 83°24'W 83°23'W

ROCK MOUNTAIN GA-CHF-160079

IAP Tiles

11/28/16

IR Perimeter as of
11/27/16 1200 - 23,250 ac.



A1	A2	A3
B1	B2	B3
C1	C2	C3
D1	D2	D3

- Structures
- Helispot
- Drop Point
- Staging
- Dip
- RAWs
- State Line
- Appalachian Trail
- Completed Dozer Line
- P - P Prepped Line
- H - H Hand Line
- Completed Line
- Uncontrolled Fire Edge
- Wilderness



Datum NAD83



NB 11/27/16 2230