

ROCK MOUNTAIN GA-CHF-160079



Briefing Map 11/30/16

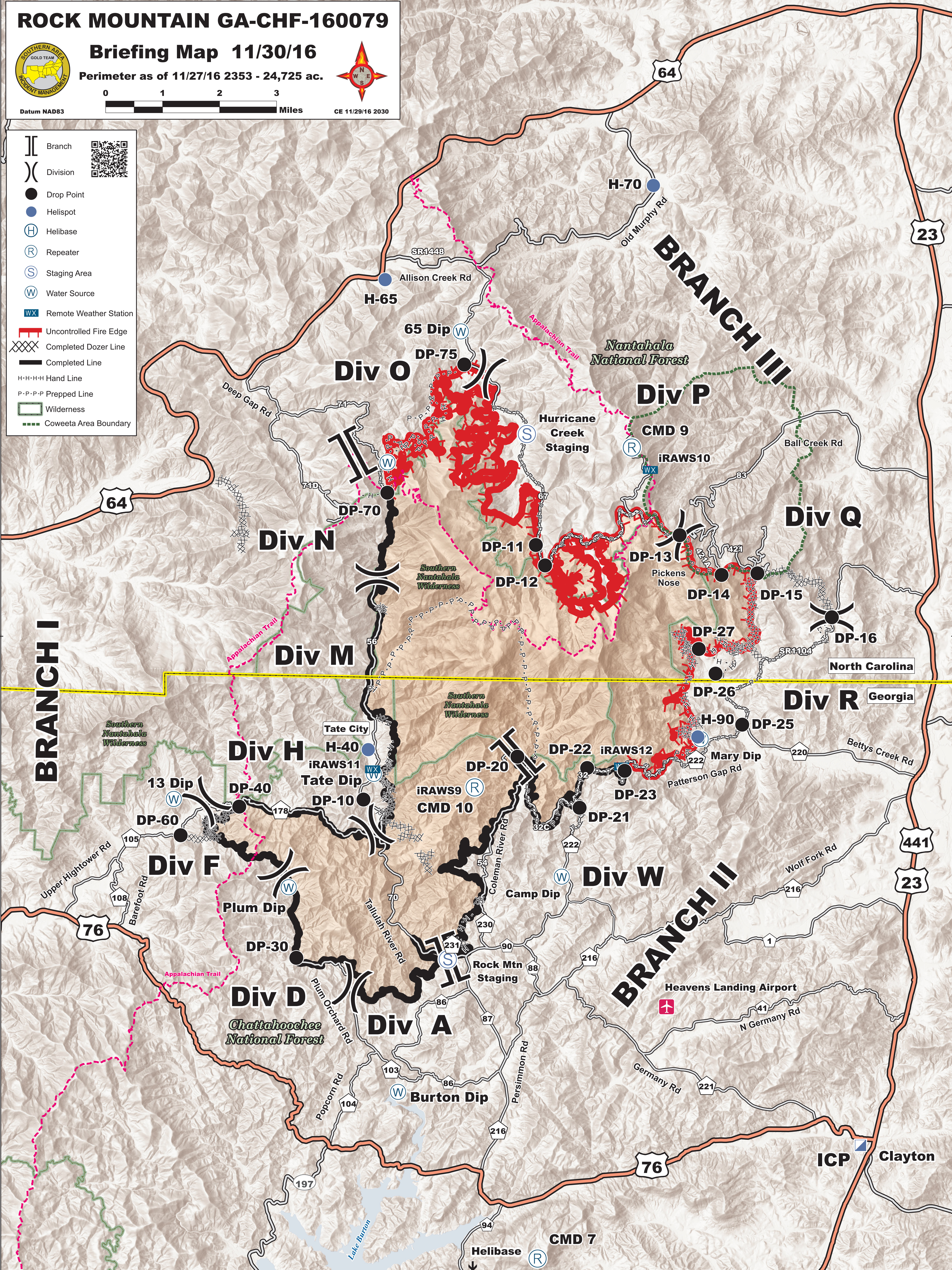
Perimeter as of 11/27/16 2353 - 24,725 ac.



CE 11/29/16 2030

Datum NAD83

- Branch
- Division
- Drop Point
- Helispot
- Helibase
- Repeater
- Staging Area
- Water Source
- Remote Weather Station
- Uncontrolled Fire Edge
- Completed Dozer Line
- Completed Line
- Hand Line
- Prepped Line
- Wilderness
- Coweeta Area Boundary



ICP Clayton