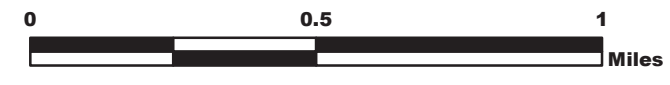


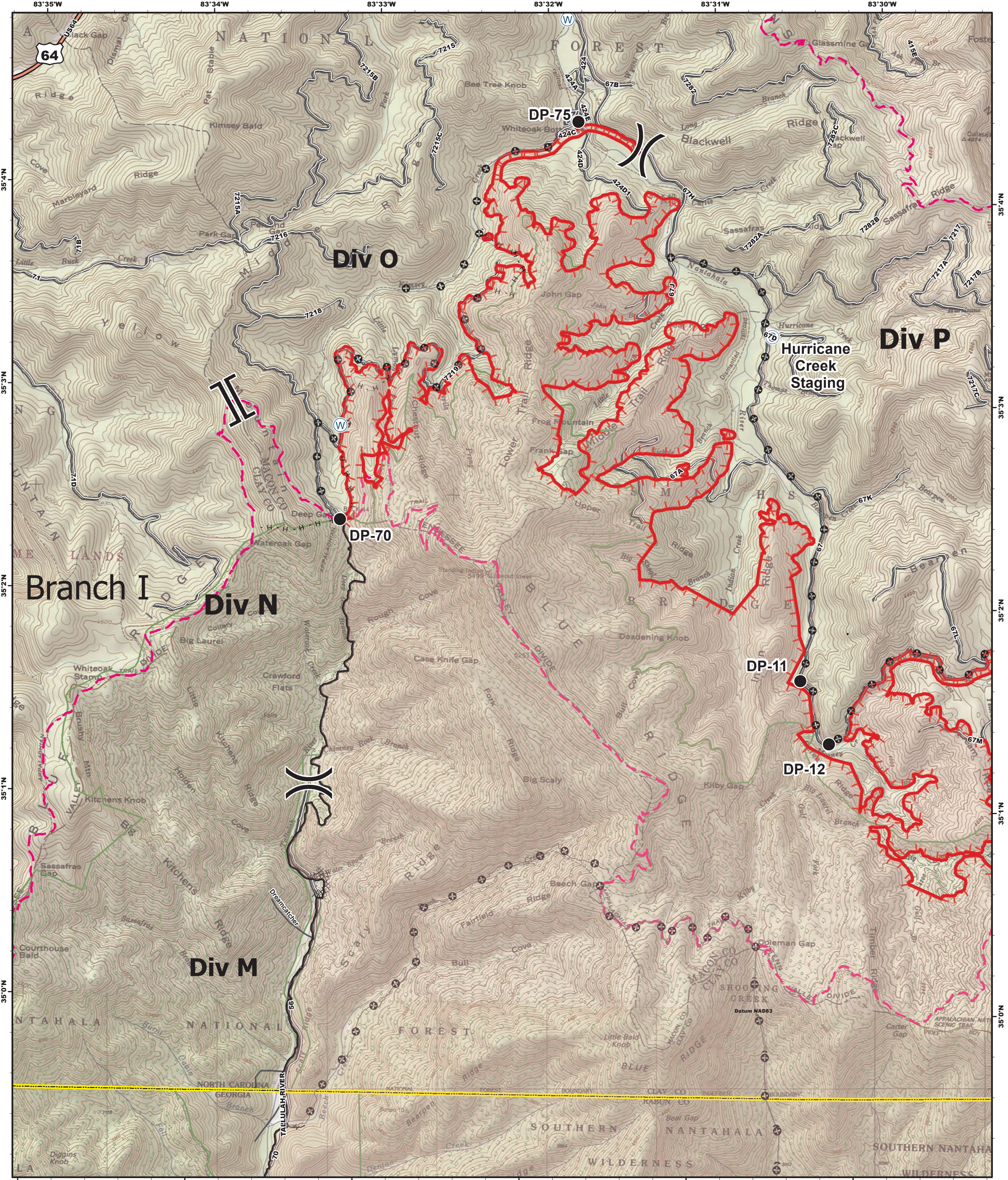
- Coweeta Boundary
- R Repeater
- C Camp
- W Water Source
- Drop Point
- Helispot
- WX Mobile Weather Unit
- Division
- Uncontrolled Fire Edge
- Completed Dozer Line
- Completed Line
- H - H Hand Line
- + Other
- Branch

# Operations Map

## ROCK MOUNTAIN GA-CHF-160079

Perimeter as of 11/27/16 2353 - 24,725 ac.





83°35'W 83°34'W 83°33'W 83°32'W 83°31'W 83°30'W

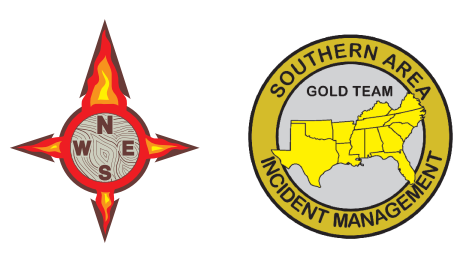
● Drop Point  
 ○ Staging Area  
 ○ Water Source  
 ) Division  
 || Branch  
 H - H Hand Line  
 ⊕ Other

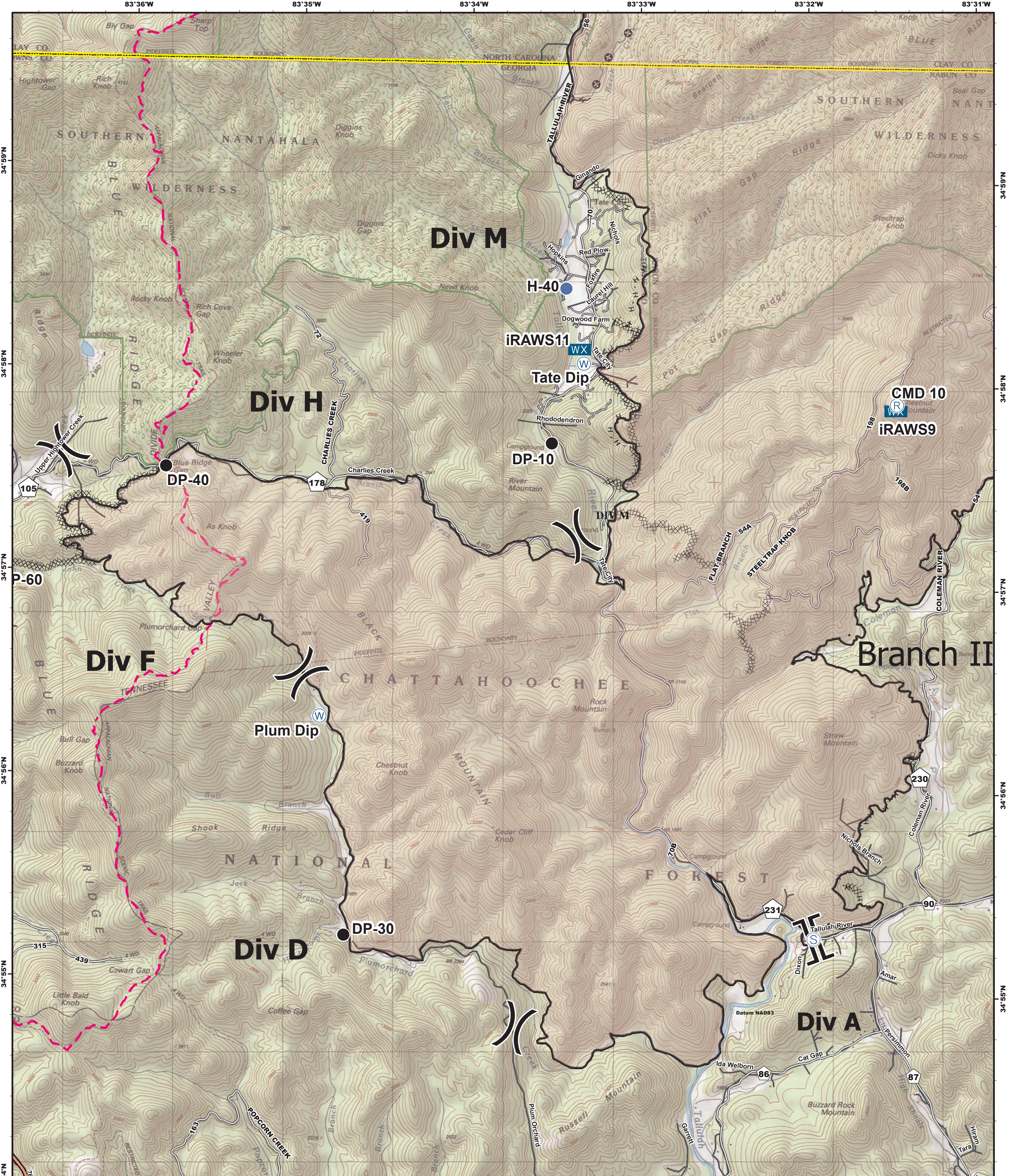
# Operations Map

## ROCK MOUNTAIN GA-CHF-160079

Perimeter as of 11/27/16 2353 - 24,725 ac.

Uncontrolled Fire Edge  
 Completed Dozer Line  
 Completed Line





- Drop Point
- Helispot
- WX Mobile Weather Unit
- Ⓡ Repeater
- Ⓢ Staging Area
- Ⓦ Water Source
- || Branch
- )) Division
- XXXX Completed Dozer Line
- Completed Line
- H - H Hand Line
- ⊕ Other

# Operations Map

## ROCK MOUNTAIN GA-CHF-160079

Perimeter as of 11/27/16 2353 - 24,725 ac.

