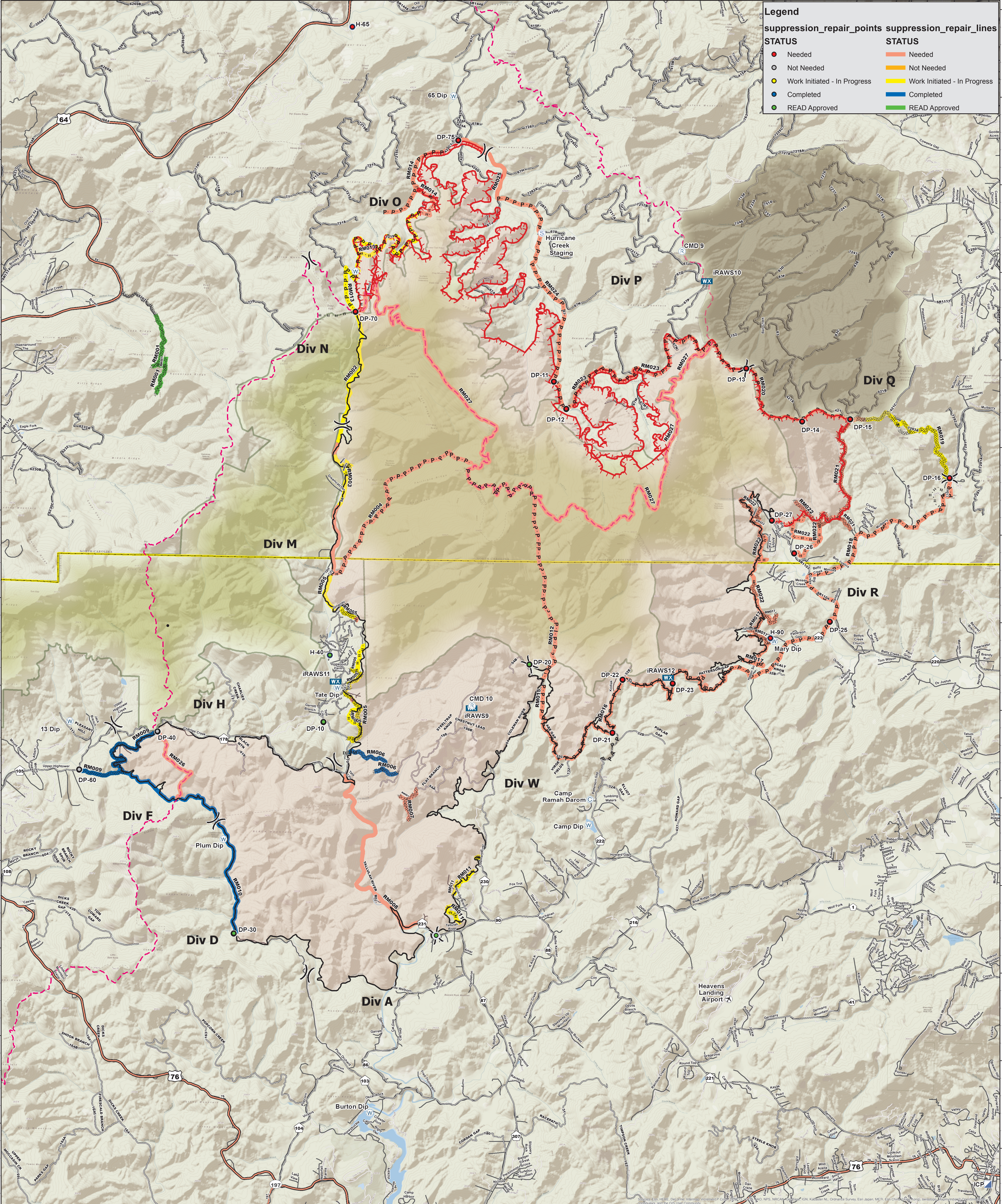


**Legend**

suppression_repair_points	suppression_repair_lines
● Needed	— Needed
○ Not Needed	— Not Needed
● Work Initiated - In Progress	— Work Initiated - In Progress
● Completed	— Completed
● READ Approved	— READ Approved



■ Coweeta Forest	WX Mobile Weather Unit	⎓ Division
✈ Airstrip or Airport	Ⓡ Repeater	— Uncontrolled Fire Edge
Ⓢ Camp	Ⓢ Staging Area	— Completed Dozer Line
● Drop Point	Ⓜ Water Source	— Completed Line
● Helispot	Ⓜ Incident Command Post	— H - H Hand Line
		— P - P Prepped Line



# Operations Map

## ROCK MOUNTAIN GA-CHF-160079

### 2016 1201 Day Shift

Perimeter as of 11/27/16 2353  
24,725 ac.  
Datum NAD83

