

Legend	
● suppression_repair_points	● suppression_repair_lines
STATUS	
● Needed	● Needed
● Not Needed	● Not Needed
● Work Initiated - In Progress	● Work Initiated - In Progress
● Completed	● Completed
● READ Approved	● READ Approved

Operations Map

ROCK MOUNTAIN GA-CHF-160079

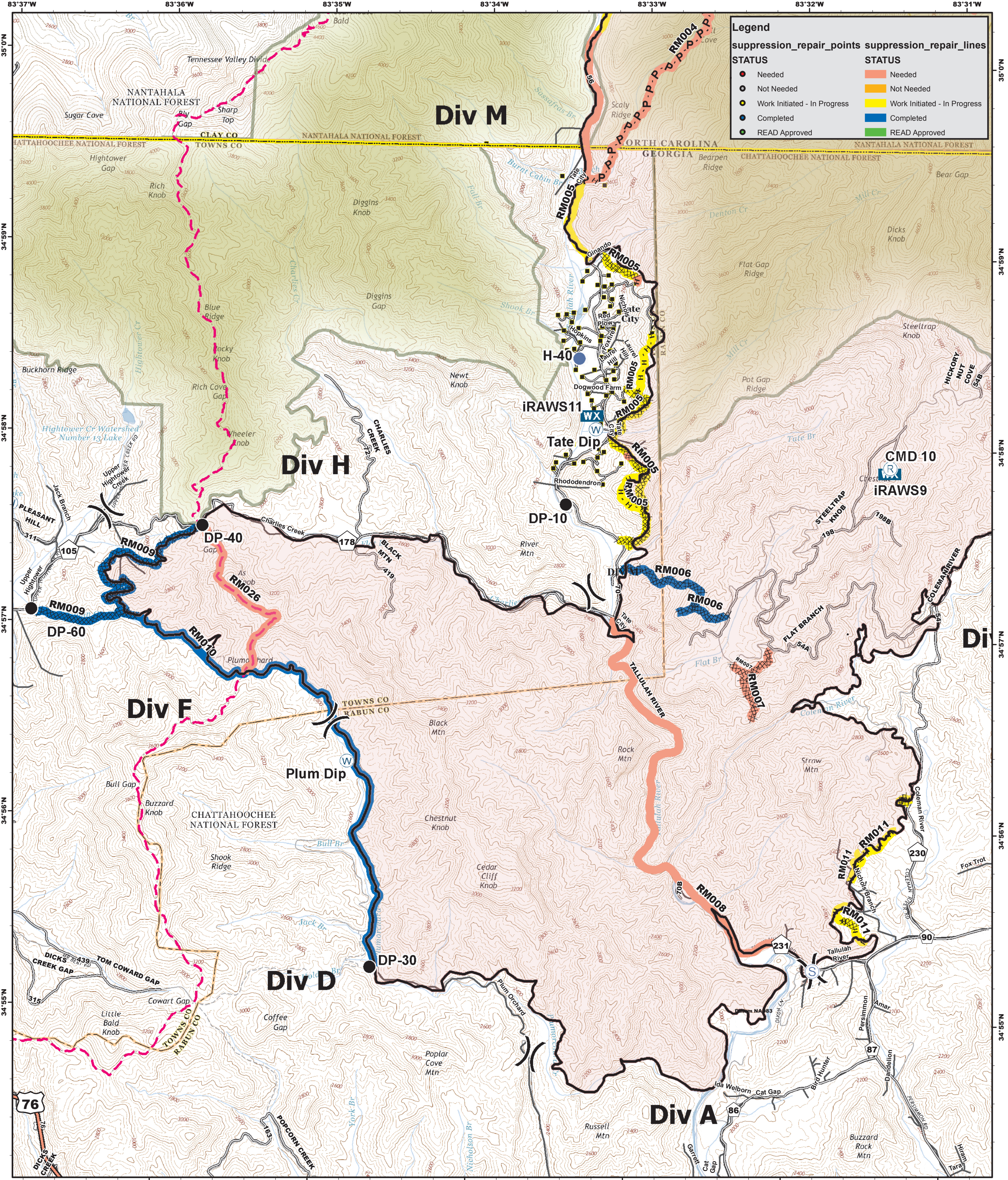
2016 1201 Day Shift

- Coweeta_Polygon
- Drop Point
- Hellspot
- WX Mobile Weather Unit
- Ⓡ Repeater
- Ⓢ Staging Area
- Ⓜ Water Source
- ⌋ Division
- XXXX Completed Dozer Line
- Completed Line
- H - H Hand Line
- P - P Prepped Line
- Uncontrolled Fire Edge



Perimeter as of 11/27/16 2353
24,725 ac.





Legend	
● suppression_repair_points	● suppression_repair_lines
○ STATUS	○ STATUS
● Needed	● Needed
● Not Needed	● Not Needed
● Work Initiated - In Progress	● Work Initiated - In Progress
● Completed	● Completed
● READ Approved	● READ Approved

Operations Map

ROCK MOUNTAIN GA-CHF-160079

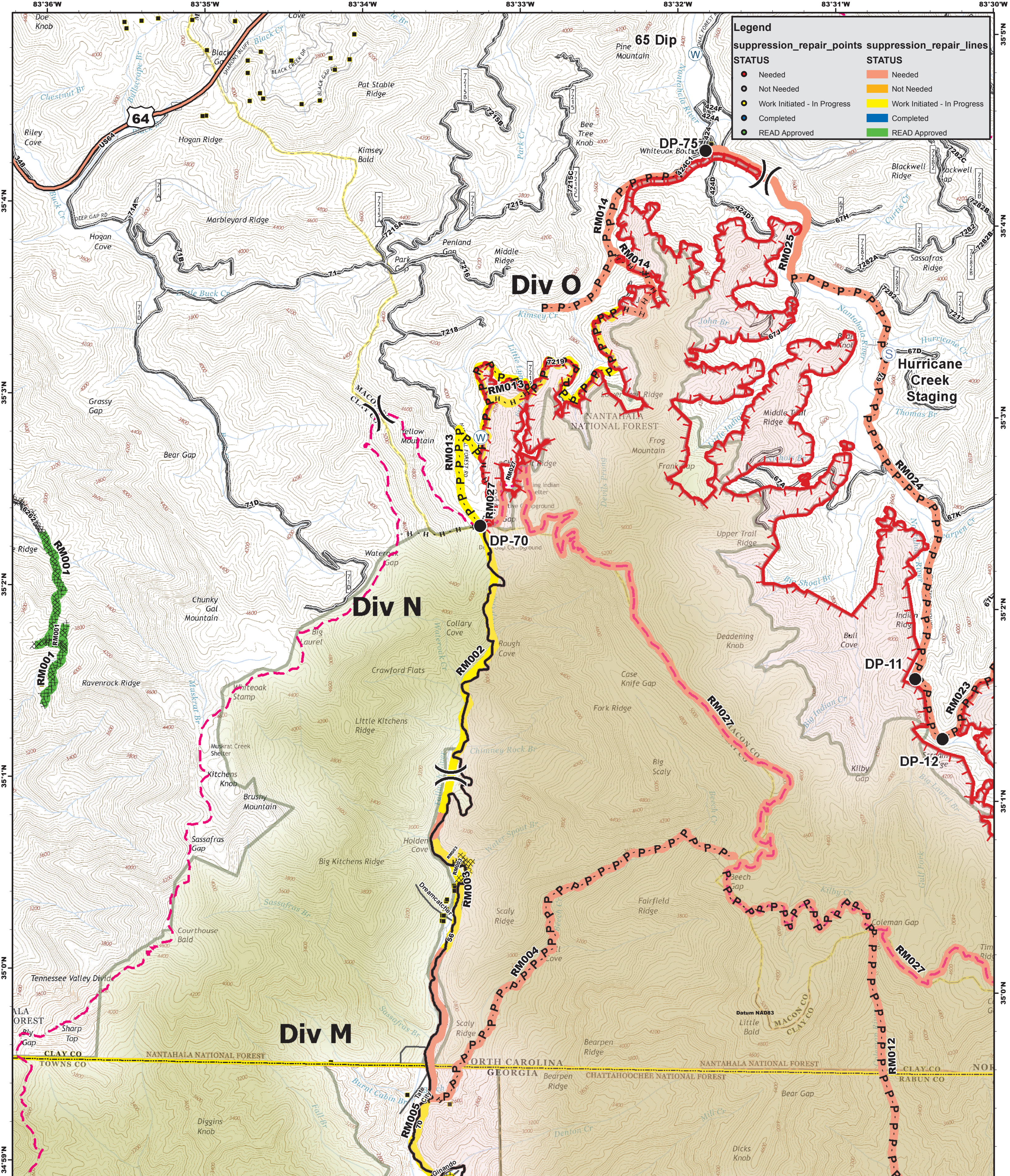
2016 1201 Day Shift

- Drop Point
- Staging Area
- Hellsport
- W Water Source
- WX Mobile Weather Unit
- Ⓡ Repeater
- XXXXX Completed Dozer Line
- Completed Line
- H - H Hand Line
- P - P Prepped Line
-) Division



Perimeter as of 11/27/16 2353
24,725 ac.





Legend	
●	suppression_repair_points
—	suppression_repair_lines
STATUS	
●	Needed
○	Not Needed
●	Work Initiated - In Progress
●	Completed
●	READ Approved
—	Needed
—	Not Needed
—	Work Initiated - In Progress
—	Completed
—	READ Approved

- Drop Point
- Staging Area
- W Water Source
- ⌋ Division
- Uncontrolled Fire Edge
- XXXX Completed Dozer Line
- Completed Line
- H - H Hand Line
- P - P Prepped Line

Operations Map

ROCK MOUNTAIN GA-CHF-160079

2016 1201 Day Shift



Perimeter as of 11/27/16 2353
24,725 ac.

