

Incident Action Plan

Sunday– December 4, 2016

Day Operational Period
0700-1900



Rock Mountain Fire



GA-CHF-160079

P8KTE7 (0803)



Maps/IAP QR Code



INCIDENT OBJECTIVES	1. Incident Name Rock Mountain Fire	2. Date Prepared 12/03/16	3. Time Prepared 1200
4. Operational Period 12/04/16 0700 - 1900			
5. General Control Objectives For The Incident <u>Objectives for the Incident:</u> <ul style="list-style-type: none"> • Implement Operational actions that balance responder risk and probability of success in efforts to protect identified values at risk. • Implement suppression repair actions to minimize fire impacts to Forest Service and private lands . • Take actions to maintain and strengthen relationships with partner agencies, cooperators, community groups and members. • Provide for Initial Attack within designated Initial Attack boundaries. Support request for assistance to local units as feasible. • Develop suppression repair actions within wilderness and road-less areas that minimize adverse impacts to wilderness/road-less values and threatened/sensitive species of concern. 			
<u>Control Objectives:</u> <ul style="list-style-type: none"> • Coordinate suppression actions with cooperators responsible for structure protection in Rabun, Towns, Macon & Clay Counties. • Provide for public safety by recommending evacuation levels as deemed necessary to responsible emergency management officials in Raburn, Towns, Macon and Clay Counties. • Prevent loss and/or damage to private lands through combination of direct attack, use of natural barriers in combination with burnout operations, and point protection around threatened structures. Coordinate protection of private lands in North Carolina with the North Carolina Forest Service. • Limit fire spread to the north and east of the Nantahala Wilderness area in order to reduce loss and/or damage to private lands and residences along Hwy 64 and to the Coweeta Research Area. Establish containment lines with a consideration for long term patrol and maintenance needs associated with continued leaf-off. • Maintain patrol actions following initial containment efforts on all perimeters to ensure continued containment until leaf-off is complete and/or weather conditions preclude further fire spread. 			
6. Weather forecast for Period INCREASED MOISTURE WILL RETURN FROM THE WEST ON SUNDAY AND LINGER INTO TUESDAY. A STRONG COLD FRONT WILL ARRIVE EARLY THURSDAY BRINGING SOME OF THE COLDEST AIR OF THE SEASON SO FAR AT THE END OF THE WEEK.			
7. General Safety Message Look up, look down, look all around for hazards, recognize them and mitigate them.			
8. ATTACHMENTS (X IF ATTACHED) <input checked="" type="checkbox"/> Organization List - ICS 203 <input checked="" type="checkbox"/> Medical Plan - ICS 206 [] _____ <input checked="" type="checkbox"/> Division Assignment Lists - ICS 204 <input checked="" type="checkbox"/> Incident Map [] _____ <input checked="" type="checkbox"/> Communications Plan - ICS 205 <input checked="" type="checkbox"/> Traffic Plan [] _____			
9. Prepared By (Planning Section Chief) /s/ Dave Berens/ Roger Fryar 		10. Approved By (Incident Commander) /s/ Steve Parrish 	

ORGANIZATION ASSIGNMENT LIST	
1. Incident Name Rock Mountain Fire	
2. Date 12/03/2016	3. Time 1300
4. Operational Period 12/04/16 Day (0700-1900)	

5. Incident Commander and Staff	
Incident Commander	Steve Parrish
Deputy Incident Commander	Marty Bentley, Danny Bryant
Liaison Officer	Bryan Swanson, Jack Harper
Safety Officer	Buddy Kelley, Randy Miller
Information Officer	Sallie Gentry, Michelle Burnett

6. Agency Representative	
USFS – Chattahoochee-Oconee NF – Agency Administrator	Betty Jewett
NCFS/FS- Agency Administrator	Greg Yates
USFS – AREP Georgia	Jason Engle, Tim Jones
USFS – AREP North Carolina	Allen Nicholas/ Mike Wilkins
NCFS – AREP North Carolina	Tim Howell
Lead Resource Advisor	Russ Mitchell
Resource Advisors	David Vinson, Christopher Lydick
Resource Advisor	Jasper Peach

7. Planning Section	
Chief	Dave Berens, Roger Fryar
Resource Unit Leader	Melonie Sellers, Carol O'Bryan, E.J. Bunzendahl (t)
Demob Unit Leader	Dave Dobbs
Situation Unit Leader	Jeff DeMatteis
Documentation Unit Leader	Rex Crabtree
GIS Specialist	Chris Evans, Rick Dillard (t)
Fire Behavior Analyst	Stewart Turner
Training Specialist	Thomas Shaver
Status Check-In	Jeff Turner
ITSS	John Edwards

8. Logistics Section	
Chief	Leslie Morgan, Chris Alford, Jerry Jussila
Facilities Unit Leader	Tom Phillips
Supply Unit Leader	James Grimes
Ground Support Unit Leader	Todd Waller
RCDM	Chris Combs

8. Logistics Section (Continued)	
Medical Unit Leader	Jeff Holbrook, Jamie Martin (t)
Security Manager	Greg Blanks
Communication Unit Leader	George Rosenthal
Ordering Manager	Carl Bauer

9. Operations Section	
Operations Chief – Lead	Fenn Wimberly
Operations Chief – Field	Debbie Beard
Operations Chief – Planning	Pete Kubiak, Scott Beacham (t)
a. Divisions	
Division A/D/F/H/M/N/W	Steve Gray
Division O	Matthew Johnson, Heath Thomas (t)
Division P	Mary Owen
Division Q/R	Kelly Cagle, Jamie Farmer (t)
IA Group	Paul Roose
b. Air Ops Branch	
Air Operations Director	Mike Rock
Air Support Group Sup.	John Bragg
Air Support Group Sup.	Randy Carter
Helibase	Mike Lewton

10. Finance Section	
Chief	Wanda Kelly
Time Unit Leader	Laura Wilson
Equipment Time Recorder	Rachel Acker
Cost Unit Leader	Tom Steele
Cost Unit Leader (t)	Debra Sheriff
Procurement Unit Leader	Paula Winningham, Nina Barrow (t)
Comp. Claims Unit Leader	Terri McDonald

Prepared by (Resource Unit Leader)
Melonie Sellers/ Carol O'Bryan/ E.J. Bunzendahl RESL(t) <i>MS</i>

Rock Mountain National Weather Service Greenville-Spartanburg2016-12-03 2:48 PM EST

SPOT FORECAST FOR ROCK MOUNTAIN...USFS 248 PM EST SAT DEC 3 2016

.DISCUSSION...

INCREASED MOISTURE WILL RETURN FROM THE WEST ON SUNDAY AND LINGER INTO TUESDAY. A STRONG COLD FRONT WILL ARRIVE EARLY THURSDAY BRINGING SOME OF THE COLDEST AIR OF THE SEASON SO FAR AT THE END OF THE WEEK.

.SUNDAY...

SKY/WEATHER.....CLOUDY (95-100 PERCENT). PATCHY FOG EARLY IN THE MORNING. PATCHY FOG LATE IN THE MORNING.RAIN.

MAX TEMPERATURE.....AROUND 44.

MIN HUMIDITY.....81 PERCENT.

WIND (20 FT).....SOUTHEAST WINDS 8 TO 16 MPH WITH GUSTS UP TO 25 MPH...INCREASING TO 15 TO 20 MPH WITH GUSTS UP TO 30 MPH IN THE AFTERNOON.

MIXING HEIGHT.....700-2000 FT AGL.

TRANSPORT WINDS.....SOUTHEAST 6 TO 12 MPH...INCREASING TO SOUTH 17 TO 24 MPH LATE IN THE MORNING...THEN INCREASING TO 30 TO 38 MPH LATE IN THE MORNING...DECREASING TO AROUND 26 MPH LATE.

SMOKE DISPERSAL.....POOR TO GOOD (4000-53400 KNOT-FT)...INCREASING TO GOOD TO EXCELLENT (30400-65600 KNOT-FT) IN THE AFTERNOON.

PCPN AMOUNT.....0.96 INCHES.

TIME (EST) 7AM 8AM 9AM 10A 11A 12P 1PM 2PM 3PM 4PM 5PM

SKY (%).....99 98 98 97 98 99 100 100 100 100 100

WEATHER COV.....DEF DEF DEF DEF DEF DEF DEF DEF DEF DEF DEF DEF

WEATHER TYPE....RN RN RN RN RN RN RN RN RN RN RN

TSTM COV.....

TEMP.....37 37 39 40 41 42 43 43 44 44 43

DEWPOINT.....35 36 36 36 37 37 38 38 38 38 38

RH.....94 94 91 87 85 84 83 81 81 81 83

20 FT WIND DIR..S S SE SE SE SE SE SE SE SE SE

20 FT WIND SPD..7 9 10 12 14 17 17 17 16 15 13

20 FT WIND GUST.15 15 15 20 25 30 30 30 30 25 20

MIX HGT (KFT)...0.7 0.9 1.1 1.4 1.6 1.8 2.0 1.9 1.9 1.8 1.3

TRANSP WIND DIR.SE SE S S S S S S S S S

TRANSP WIND SPD.7 12 17 24 30 35 38 38 37 32 26

VRATE KT-FT/10004 9 17 29 41 53 66 64 60 51 30

.SUNDAY NIGHT...

SKY/WEATHER.....CLOUDY (95-100 PERCENT). PATCHY FOG EARLY IN THE EVENING. RAIN IN THE EVENING. A CHANCE OF RAIN AFTER MIDNIGHT.

MIN TEMPERATURE.....AROUND 40.

MAX HUMIDITY.....97 PERCENT.

WIND (20 FT).....SOUTHWEST WINDS 5 TO 13 MPH WITH GUSTS UP TO 20 MPH IN THE EVENING...BECOMING LIGHT.

MIXING HEIGHT.....300-800 FT AGL.

TRANSPORT WINDS.....SOUTHEAST 9 TO 18 MPH...BECOMING EAST 5 TO 8 MPH LATE IN THE EVENING...THEN BECOMING NORTHWEST 1 TO 3 MPH AFTER MIDNIGHT.

SMOKE DISPERSAL.....POOR TO FAIR (300-13300 KNOT-FT).

PCPN AMOUNT.....0.29 INCHES.

.MONDAY...

SKY/WEATHER.....CLOUDY (95-100 PERCENT). A CHANCE OF RAIN UNTIL LATE AFTERNOON...THEN RAIN LIKELY EARLY IN THE AFTERNOON.

MAX TEMPERATURE.....AROUND 52.

MIN HUMIDITY.....85 PERCENT.

WIND (20 FT).....LIGHT WINDS...BECOMING SOUTH AROUND 5 MPH EARLY IN THE AFTERNOON...THEN BECOMING EAST 6 TO 7MPH LATE.

MIXING HEIGHT.....300-900 FT AGL.

TRANSPORT WINDS.....NORTHWEST 2 TO 7 MPH...BECOMING SOUTH 10 TO 14 MPH IN THE LATE MORNING AND AFTERNOON.

SMOKE DISPERSAL.....POOR (600 KNOT-FT).

PCPN AMOUNT.....0.16 INCHES.

FIRE BEHAVIOR FORECAST

FORECAST NUMBER: 21	TYPE OF FIRE: Wildfire
FIRE NAME: Rock Mountain Fire	OPERATIONAL PERIOD: December 4, 2016 Day Shift
DATE ISSUED: December 3, 2016	TIME ISSUED: 2000
UNIT: Chattahoochee-Oconee & Nantahala National Forests	SIGNED: <i>Stewart Turner</i> Fire Behavior Analyst (FBAN)

INPUTS

WEATHER SUMMARY: *** See Fire Weather Forecast for Details ***

CLOUDY (95-100 PERCENT). PATCHY FOG EARLY IN THE MORNING. PATCHY FOG LATE IN THE MORNING. RAIN.

Day Shift: High temp: 44°F, Low RH: 81% Ridge winds Southeast 15-20 mph with gusts up to 30 mph in the afternoon.

FIRE DANGER: Drought conditions will continue to weaken. The Ketch-Byram Drought Index (KBDI) values are in the low 300 range (on a scale of 0-800) indicating some more rainfall is needed to return the soil moisture (and fuels) to more seasonal conditions.

FUELS: The primary carrier of fire has been hardwood leaf litter on the surface (FM9/TU3) with some brush components (rhododendron/mountain laurel). Brush at higher elevations may become available to burn on steep slopes or with exposure to higher winds at very low RH's. Leaf off is 80% to 100% complete, increasing with elevation. New leaf off will add surface fuel load over burned areas and firelines and increase re-burn or slop-over potential. 1000-hour fuels are at 17%. Log bridges over creeks will burn and allow potential for fire to cross. Winds can redistribute leaf litter reducing in some areas and increasing in others; think "transient" fuels.

TOPOGRAPHY: Steep/rugged, 40+% slope.

OUTPUTS

FIRE BEHAVIOR

GENERAL: Recent precipitation continues to moderate fire behavior. Smoldering heavy fuels could hold heat through the recent rain events. Watch for limited creeping this afternoon as the leaf lay dries.

Fuel Model	ROS* (chains/hour)		Flame Length (feet)		Probability Of Ignition	Spotting Distance
	Head	Backing	Head	Backing		
FM09-Timber Litter Hardwood Leaf Litter	<0	<0	<0	<0	<17%	-0-

*ROS = Rate of Spread Fire behavior predictions are for the hottest and driest period of the day.

SPECIFIC:

All Branches/All Divisions: No spread or fire activity is expected. Snags/trees that continue to be weakened by smoldering. These snags/trees present a hazard to firefighters, especially with wind.

AIR OPERATIONS: Low morning clouds and rain may limit aviation resources.

SAFETY

Harry T. Gisborne (1948) about experienced judgment: "For what is experienced judgment except opinion based on knowledge acquired by experience? If you have fought forest fires in every different fuel type, under all possible kinds of weather, and if you have remembered exactly what happened in each of these combinations, your experienced judgment is probably very good. But if you have not fought all sizes of fires in all kinds of fuel types under all kinds of weather, then your experience does not include knowledge of all the conditions." Be heads up for rapidly changing weather.

Division/Group Assignment List (ICS 204 WF)

1. Incident Name:		3.	
Rock Mountain		Branch:	Division/Group:
2. Operational Period: 0700-1900		A/D/F/H/M/N/W	
Date/Time From: 12/04/16 0700	Date/Time To: 12/04/16 1900		

4. Operations Personnel			
AIR ATTACK SUPERVISOR		FIELD OPERATIONS	Fenn Wimberly Debbie Beard
DIVISION/GROUP SUPERVISOR	Steve Gray	12/10	PLANNING OPERATIONS Pete Kubiak Scott Beacham (t)

5. Resources Assigned this Period						
Strike Team / Task Force / Resource Designator	LWD	Leader	Number Persons	Drop Off PT./Time	Pick Up PT./Time	
HC2IA Chloeta Fire #14	C-25	12/7	Phillip Dow	19	0700	1900
ENG6 Flathead # 1301	E-103	12/10	Lloyd Barnaby	3	0700	1900
SOF2	O-118	12/14	Mark Sullivan	1	0700	1900
MEDIC 10 Ambulance	E-70			1	0700	1900
EMPF	O-106	12/14	Duane Woolsey	1	0700	1900

6. Control Operations/Work Assignments:

Task:

- Perform suppression repair work on dozer line in Div N and Div M in coordination with the READ
- Patrol and monitor division for hot spots and smoke along the control lines

Purpose:

- Ensure fire does not rekindle and spread outside current footprint as of 11/29/16

End State:

- Control fire and return division to forest mop-up and repair standards
- All resources return to home unit safely

7. Special Instructions:

- Ensure all residents are treated with respect
- If forecasted weather conditions materialize, resources will be staged at designated areas

6. Division/Group Communication Summary						
Function	Channel	RX Frequency	RX Tone/NAC	TX Frequency	TX Tone/NAC	Mode
COMMAND	6	168.775		164.150	114.8	
COMMAND	7	168.775		164.150	127.3	
TACTICAL	10	168.200		168.200		
AIR TO GROUND	14	167.425		167.425		

9. Prepared By (Resource Unit Leader) /s/ Carol O'Bryan / Melonie Sellers <i>ms</i>	Approved By (Planning Section Chief) /s/ Dave Berens / Roger Fryar <i>[Signature]</i>	Date 12/03/16	Time 2000
---	---	-------------------------	---------------------

Division/Group Assignment List (ICS 204 WF)

1. Incident Name:		3.	
Rock Mountain		Branch:	Division/Group:
2. Operational Period:		O	
Date/Time From: 12/04/16 0700	Date/Time To: 12/04/16 1900		

4. Operations Personnel			
AIR ATTACK SUPERVISOR		FIELD OPERATIONS	Fenn Wimberly Debbie Beard
DIVISION/GROUP SUPERVISOR	Matt Johnson Heath Thomas (t)	PLANNING OPERATIONS	Pete Kubiak Scott Beacham (t)

5. Resources Assigned this Period						
Strike Team / Task Force / Resource Designator	LWD	Leader	Number Persons	Drop Off PT./Time	Pick Up PT./Time	
TFLD O-144	12/9	Larry Welsh	1	0700	1900	
ENG6 Fort Howes #2607 E-99	12/10	Matthew Harding	3	0700	1900	
SOF2 O-31	12/5	Tom Nash	1	0700	1900	
EMPF O-45	12/6	Ryan Verdi	1	0700	1900	
Medic 20 Ambulance						

6. Control Operations/Work Assignments:

Task:

- Perform suppression repair work in coordination with the READ
- Patrol and monitor division for hot spots and smoke along the control lines

Purpose:

- To keep fire contained to current footprint as of 11/29/16

End State:

- Control fire and return division to forest mop-up and repair standards
- All resources return to home unit safely

7. Special Instructions:

- Ensure all residents are treated with respect
- If forecasted weather conditions materialize, resources will be staged at designated areas

8. Division/Group Communication Summary						
Function	Channel	RX Frequency N/W	RX Tone/NAC	TX Frequency N/W	TX Tone/NAC	Mode
COMMAND	6	168.775		164.150	114.8	
COMMAND	7	168.775		164.150	127.3	
TACTICAL	11	168.600		168.600		
AIR TO GROUND	14	167.425		167.425		

9. Prepared By (Resource Unit Leader) /s/ Carol O'Bryan / Melonie Sellers <i>ms</i>	Approved By (Planning Section Chief) /s/ Dave Berens / Roger Fryar <i>[Signature]</i>	Date 12/03/16	Time 2000
---	---	-------------------------	---------------------

N Division/Group Assignment List (ICS 204 WF)

1. Incident Name:		3.	
Rock Mountain		Branch:	Division/Group:
2. Operational Period: 0700-1900		P	
Date/Time From: 12/04/16 0700	Date/Time To: 12/04/16 1900		

4. Operations Personnel			
AIR ATTACK SUPERVISOR		FIELD OPERATIONS	Fenn Wimberly Debbie Beard
DIVISION/GROUP SUPERVISOR	Mary Owen	PLANNING OPERATIONS	Pete Kubiak Scott Beacham (t)

5. Resources Assigned this Period						
Strike Team / Task Force / Resource Designator	LWD	Leader	Number Persons	Drop Off PT./Time	Pick Up PT./Time	
TFLD O-141	12/11	Bernie Quinonez	1	0700	1900	
ENG6 Dakota Prairie #671 E-98	12/8	Eric Danko	3	0700	1900	
SOF2 O-31	12/5	Tom Nash	1	0700	1900	
EMTF O-170	12/12	Wayne Hare	1	0700	1900	

6. Control Operations/Work Assignments:

Task:

- Perform suppression repair work in coordination with the READ
- Patrol and monitor division for hot spots and smoke along the control lines

Purpose:

- Ensure fire remains within current footprint as of 11/29/16

End State:

- Control fire and return division to forest mop-up and repair standards
- All resources return to home unit safely

7. Special Instructions:

- Ensure all residents are treated with respect
- If forecasted weather conditions materialize, resources will be staged at designated areas

8. Division/Group Communication Summary						
Function	Channel	RX Frequency	RX Tone/NAC	TX Frequency	TX Tone/NAC	Mode
COMMAND	6	168.775		164.150	114.8	
COMMAND	7	168.775		164.150	127.3	
TACTICAL	13	154.280		154.280		
AIR TO GROUND	14	167.425		167.425		

9. Prepared By (Resource Unit Leader) /s/ Carol O'Bryan / Melonie Sellers <i>ms</i>	Approved By (Planning Section Chief) /s/ Dave Berens / Roger Fryar <i>[Signature]</i>	Date 12/03/16	Time 2000
---	---	-------------------------	---------------------

Division/Group Assignment List (ICS 204 WF)

1. Incident Name:		3.	
Rock Mountain		Branch:	Division/Group:
2. Operational Period:		Q / R	
0700-1900			
Date/Time From: 12/04/16 0700	Date/Time To: 12/04/16 1900		

4. Operations Personnel			
AIR ATTACK SUPERVISOR		FIELD OPERATIONS	Fenn Wimberly Debbie Beard
DIVISION/GROUP SUPERVISOR	Kelly Cagle Jamie Farmer (t)	PLANNING OPERATIONS	Pete Kubiak Scott Beacham (t)

5. Resources Assigned this Period						
Strike Team / Task Force / Resource Designator	LWD	Date	Leader	Number Persons	Drop Off PT./Time	Pick Up PT./Time
TFLD	O-142	12/10	Scott Burghardt	1	0700	1900
HC2 Lava River #173	C-45	12/10	Jorge Perez	20	0700	1900
STEN	O-79	12/7	Joel Burgett	1	0700	1900
ENG6 Flathead # 1304	E-100	12/10	Pierre Malatare	3	0700	1900
HEQB	O-156	12/12	Brian Bull	1	0700	1900
DOZ3 I Know Jack	E-36	12/5	Ben Thompson	2	0700	1900
SOF2	O-177	12/8	Steve Hoppner	1	0700	1900
Medic 30			Ambulance	1	0700	1900
EMTF	O-92	12/7	Jed Getman	1	0700	1900

6. Control Operations/Work Assignments:

Task:

- Perform suppression repair work from DP 15 south to Crystal Creek and DP 15 east to 7293A Road in coordination with the READ
- Patrol and monitor division for hot spots and smoke along the control lines

Purpose:

- To keep fire contained to current footprint and prevent fire from escaping onto Coweeta hydrologic station.

End State:

- Control fire and return division to forest mop-up and repair standards
- All resources return to home unit safely

7. Special Instructions:

- Ensure all residents are treated with respect
- If forecasted weather conditions materialize, resources will be staged at designated areas

8. Division/Group Communication Summary						
Function	Channel	RX Frequency	RX Tone/NAC	TX Frequency	TX Tone/NAC	Mode
COMMAND	6	168.775		164.150	114.8	
COMMAND	7	168.775		164.150	127.3	
TACTICAL	9	168.050		168.050		
AIR TO GROUND	14	167.425		167.425		

9. Prepared By (Resource Unit Leader) /s/ Carol O'Bryan / Melonie Sellers	Approved By (Planning Section Chief) /s/ Dave Berens / Roger Fryar	Date 12/03/16	Time 2000
---	--	-------------------------	---------------------

Division/Group Assignment List (ICS 204 WF)

1. Incident Name:		3.				
Rock Mountain		Branch:	Division/Group:			
2. Operational Period: 0700-1900		IA GROUP				
Date/Time From: 12/04/16 0700	Date/Time To: 12/04/16 1900					
4. Operations Personnel						
AIR ATTACK SUPERVISOR		FIELD OPERATIONS	Fenn Wimberly Debbie Beard			
DIVISION/GROUP SUPERVISOR	Paul Roose	PLANNING OPERATIONS	Pete Kubiak Scott Beacham (t)			
5. Resources Assigned this Period						
Strike Team / Task Force / Resource Designator	LWD	Leader	Number Persons	Drop Off PT./Time	Pick Up PT./Time	
ENG6 Nine Mile #641 E-105	12/9	Scott Suko	3	0700	1900	
ENG6 Flathead # 611 E-102	12/11	Brandon Hightower	3	0700	1900	
6. Control Operations/Work Assignments:						
Task:						
<ul style="list-style-type: none"> • Assist other divisions with any needs • Be ready to respond to any I.A. 						
Purpose:						
<ul style="list-style-type: none"> • Ensure timely response to any I.A. within designated response area 						
End State:						
<ul style="list-style-type: none"> • Minimize damage to private property • All resources return to home unit safely 						
7. Special Instructions:						
<ul style="list-style-type: none"> • Ensure all residents are treated with respect • If forecasted weather conditions materialize, resources will be staged at designated areas 						
8. Division/Group Communication Summary						
Function	Channel	RX Frequency N/W	RX Tone/NAC	TX Frequency N/W	TX Tone/NAC	Mode
COMMAND	6	168.775		164.150	114.80	
COMMAND	7	168.775		164.150	127.3	
TACTICAL	3	169.900		169.900		
AIR TO GROUND	14	167.425		167.425		
9. Prepared By (Resource Unit Leader)		Approved By (Planning Section Chief)		Date	Time	
/s/ Carol O'Bryan / Melonie Sellers <i>ms</i>		/s/ Dave Berens / Roger Frya <i>[Signature]</i>		12/03/16	2000	

SAFETY MESSAGE

INCIDENT: Rock Mountain

DATE: December 4, 2016

Major Hazards and Risks: Vehicle Use, Travel

Parking/Turning: With limited parking we frequently have to either back up or pull into a tight parking spot, and the potential for getting too close increases each time we do it. Backing accidents account for a large percentage of vehicle damage on incidents. A backing accident is preventable by using a spotter to help you into or out of a tight parking space. If you are alone, remember where your blind spots are and go slowly. Also the roads around the fire are narrow, with limited sight distance around turns. All vehicles stay as near the center of road as possible to avoid soft edges caused by rain so go very slowly when approaching a blind turn. Turning a vehicle around on some of the roads will get more difficult as rain makes the shoulders and ditch areas hazardous.

Equipment Rehab: Most firefighters are experts when it comes to taking care of their equipment. Don't get careless at the end of the assignment and rush your responsibilities. With a little rain mixed with a little oil residue, steel truck beds or tool boxes can become very slick. Use caution if you have to climb up to store or tie down equipment. Saw chains and axes cut even when dull. Wear the proper PPE while sharpening and storing. Make sure the area around your vehicle is clear before moving. Check vehicle lights, wipers, mirrors, and tires before starting your journey. Remove rock or gravel from tires tread or from between dual tires.

Travel Home: Regardless of how you are traveling home, you must be constantly aware of your surroundings and take steps to arrive home safely. Get plenty of rest before you travel and stay alert. If you get tired, stop and rest. Most agency regulations require you to take a break at least once every couple of hours. Get weather and road condition updates, and avoid driving in inclement weather. Check in frequently with your dispatch center or whoever is tracking your progress. Remember if you are traveling alone, you must limit your hours of driving to 10 hours and arrive at your destination by 2200 or stop for the night.

TSA Alert: If you are flying home, remember to not pack any hazardous material in your baggage. Some items that are not permitted on commercial or charter aircraft, either in carry on bags or in checked baggage, include fusees, strike-anywhere matches, lighter fluid, and gasoline. The TSA has asked that firefighters carrying fire shelters keep the shelter in either the yellow or blue fire shelter carrying case, or within the backpack pouch specifically designed to hold a fire shelter. This practice should help screeners during processing and decrease the likelihood that they could damage the fire shelter during the security inspection.

REMEMBER: "Safety is an attitude based on awareness of your environment and capabilities."

Prepared By: Buddy Kelley, Randy Miller

INCIDENT SAFETY ANALYSIS 215a

Rock Mountain - Sunday, December 04, 2016

8. Location	9. Hazard	6. Control or Abatement Action (Engineering, Administrative, PPE, Avoidance, Education, etc)
DIVS ALL	Helicopter Operations	<ul style="list-style-type: none"> ~ Stay clear of all bucket drops when suppression actions are in place and allow 1 minute prior to re-entry. ~ Monitor A-G communications. ~ Follow aviation safety guidelines in IRPG and IHOG.
DIVS ALL	Hazard Trees	<ul style="list-style-type: none"> ~ Follow "Hazard Tree Safety" guidelines, IRPG page 22. ~ Post lookouts, or use a spotter in mop-up areas with personnel. ~ Don't park vehicles or take breaks in high concentrations of hazard trees. ~ Establish trigger points for disengagement during high wind events. ~ Remember that the hazard zone extends a minimum of 2 1/2 tree heights.
DIVS ALL	Injury & Medical Emergency	<ul style="list-style-type: none"> ~ Assist injured employee appropriate medical care. ~ Use EMT's on Division for initial care. ~ Follow medical protocol as outlined in ICS-206 & IRPG Pgs 99-108
DIVS ALL	Mop-up & Rehab	<ul style="list-style-type: none"> ~ Do not work above or below personnel during rehab/mop-up operations. ~ Alert crew personnel of rolling debris by yelling to affected individuals. ~ Position debris that could roll vertically on slope. ~ Wear eye protection.
DIVS ALL	Driving & Traffic	<ul style="list-style-type: none"> ~ Practice "Defensive Driving" techniques traveling on all roads and city streets. ~ Use spotters when backing. ~ Honk horn to alert personnel when backing. ~ Keep clutter off dash and inside cab. ~ Follow Driving LCES (Lights, Chock blocks, Emergency brake, Seat belts). ~ Always use headlights. ~ Yield to pedestrians and bicycles. ~ Observe posted speed limits. ~ Use the 3 second rule for following distance when driving. ~ Use chock blocks, turn wheels into hill. ~ Avoid distractions (eating, cell phones, radio). ~ Ensure that windshields are kept clean of dust and bugs.
DIVS ALL	Chain Saw Operations	<ul style="list-style-type: none"> ~ Follow "Hazard Tree Safety" guidelines, IRPG page 22 ~ Look up, Look down, Look around for hazard tree indicators. ~ Only fell and buck trees within your expertise, and training. ~ Follow "Procedural Felling Operations" on page 79 in IRPG. ~ Do not fall trees during high wind events. ~ Ensure proper use of all required PPE.
DIVS ALL	Heavy Equipment Operations	<ul style="list-style-type: none"> ~ Ensure communications are established with operators. ~ Use hand signals if other communications are unavailable. ~ Maintain a 50'-100' exclusion area around equipment and increase it to 1 1/2 times tree height when in timber. ~ Use a spotter when backing. ~ Avoid working below heavy equipment.
DIVS ALL	Steep Terrain & Rolling Debris	<ul style="list-style-type: none"> ~ Maintain 8'-10' spacing when working & walking. ~ Don't work above any personnel. ~ Be on the lookout for rolling rocks, debris, or burning material. ~ Evaluate necessity to send personnel in areas with limited access. ~ Post lookouts (IRPG pg 6).
DIVS ALL	Communications	<ul style="list-style-type: none"> ~ Maintain communication with aviation resources, and suppression organization. ~ Ensure all know frequency and protocol for contacting resources. ~ Utilize the ICS 205. ~ Utilize human repeaters when working in dead spots.

MEDICAL PLAN	1. INCIDENT NAME: Rock Mountain	4. OPERATIONAL PERIOD 12/4 0730-1900
---------------------	---	--

Ground Ambulance			
NAME	LOCATION	PHONE	PARAMEDICS
Towns County EMS	1505 State Hwy 76 Hiawassee, GA 30546	706-435-0509 911	Yes
Rabun County EMS	36 Emergency Dr. Clayton, GA 30525	706-782-6251 911	Yes
Macon County EMS	125 Hyatt Road Franklin, NC 28734	828-349-2548 911	Yes


Air Ambulance			
NAME	Phone	Response time to ICP	Aircraft Communications
Mountain Area Medical Aircraft 800-962-4354	911	20 min	Ch 13 - State Aid - 154.2800
Air Life - Georgia 14 800-854-1033	911	20 min	Ch 13 - VFire21 - 154.2800
UH-60, NCHEART (Hoist Capable)	Asheville Dispatch 828-257-4264	15 min	Ch 16 - Air Guard

Incident Resources			
NAME	LOCATION	PARAMEDICS	
		YES	NO
Medic 10 EMPF Woolsey, Duane Ambulance 801-824-3688	Divs. A/W	X	
Medic 20 EMPF Verdi, Ryan Ambulance 541-915-3913	Divs. O	X	
EMTF Hare, Wayne 435-260-0051	Divs. P		X
Medic 30 EMTF Getman, Jed Ambulance 541-391-3243	Divs. Q/R	X	

HOSPITALS										
NAME	GPS Datum - WGS 84 Degrees Decimal Minutes DD° MM.MMM'	TRAVEL TIME from ICP		PHONE	TRAUMA		HELIPAD		BURN CENTER	
		AIR	GRND		Yes	No	YES	NO	YES	NO
Mountain Lakes Medical Center 196 Ridgecrest Circle, Clayton, GA	N 34° 52.7432 W 83° 24.1995	N/A	5 min	828-488-2155		X	X			X
Mission Hospital 509 Biltmore Ave Asheville, NC (Trauma 2)	N 35° 34.53' W 82° 32.94'	25 min	1.5 hr	828-213-1948	X		X			X
University of TN MC 1924 Alcoa Highway Knoxville, TN (Trauma 1)	N 35° 57.0' W 83° 56.60'	35 min	2.5 hr	865-305-9000	X		X			X
Grady Burn Center 80 Jesse Hill Jr. Dr. Atlanta, GA (Trauma 1)	N 33° 45.08' W 084° 22.55'	20 min	2 hr	404-616-2876	X		X			X

General Information

<p>Note: Green or non-emergent injuries/illness, if deemed by on-scene EMT/Medic, does not require a full Medical Incident Report. A brief injury/illness description, treatment plan, and transport decision is sufficient.</p> <p>Short Haul Helicopter: Tail # 35HX. Request through Communications.</p>	<p>Medic 10: Is the ambulance that is dedicated to the Rock Mountain Fire. It will be staged on, available to Division A/W.</p> <p>MEDIC 20: Is the ambulance that is dedicated to the Rock Mountain Fire. It will be staged on, and available to, Divs. O.</p> <p>Medic 30: Is the ambulance that is dedicated to the Rock Mt. Fire. It will be staged on, and available to, Divs. Q/R.</p> <p>Hygiene: Wash hands before each meal to better prevent illness.</p>
--	---

PREPARED BY:  /s/ Jeff Holbrook /MEDL / Jamie Martin /MEDL (T) 435-754-4222	Date: 12/2/16	REVIEWED BY: /s/ Buddy Kelley /Safety Officer 850-447-1344	Date: 12/2/16
---	---------------	---	---------------

INCIDENT RADIO COMMUNICATIONS PLAN (ICS 205)

1. Incident Name:	2. Date/Time Prepared:	3. Operational Period:	DAY
Rock Mountain	Date: 12/3/16 Time: 1300	Date/Time From: 12/04/16 0700	Date/Time To: 12/04/16 1900

4. Basic Radio Channel Use:												
Zone Group	Ch #	Function	Channel Name/Trunked Radio System Talk group	Assignment	RX Freq	RX Tone/NAC	TX Freq	TX Tone/NAC	Mode (A, D, or M)	Remarks		
	1	FS SIMPLEX	CHAT SIM	SEE REMARKS	168.775		168.775	136.5		CHATOOGA RANGER DISTRICT SIMPLEX		
	2	FS REPEATER	BRASSTOWN	SEE REMARKS	168.775		164.150	136.5		FOREST SERVICE REPEATER GAINSVILLE DISPATCH		
	3	FS FIRE TAC	R8 FIRE	IA GROUP	169.900		169.900			REGION 8 FIRE TAC		
	4									NOT IN USE		
	5	FS REPEATER	BLACK MT	SEE REMARKS	168.775		164.150	100.0		FOREST SERVICE REPEATER GAINSVILLE DISPATCH		
	6	FS COMMAND REPEATER	GLASSY	SEE REMARKS	168.775		164.150	114.8		FOREST SERVICE REPEATER ROCK MOUNTAIN FIRE		
	7	FS COMMAND REPEATER	LONG CREEK	SEE REMARKS	168.775		164.150	127.3		FOREST SERVICE REPEATER ROCK MOUNTAIN FIRE		
	8	FS REPEATER	CHENOCETAH	SEE REMARKS	168.775		164.150	103.5		FOREST SERVICE REPEATER GAINSVILLE DISPATCH		
	9	TACTICAL	NIFC TAC 1	DIVISION Q/R	168.050		168.050			NIFC TACTICAL		
	10	TACTICAL	NIFC TAC 2	DIVISION A/D/F/H/M/N/W	168.200		168.200			NIFC TACTICAL		
	11	TACTICAL	NIFC TAC 3	DIVISION O	168.600		168.600			NIFC TACTICAL		
	12	TACTICAL	GFC TAC 1	SEE REMARKS	159.390	156.7	159.390	156.7		GEORGIA FORESTRY COMMISSION TAC		
	13	TACTICAL	VFIRE 21	DIVISION P	154.280		154.280			AIR TO GROUND LOCAL		
	14	AIR TO GROUND	A/G	SEE REMARKS	167.425		167.425			EMS MUTUAL AID		
	15	TACTICAL	EMS HEAR	SEE REMARKS	155.340		155.340			AIR GUARD		
	16	AIR GUARD	AIRGUARD	AIRGUARD	168.6250		168.6250	110.9				

5. Special Instructions: CALL GAINSVILLE DISPATCH	
6. Prepared By	Signature: /s/ George Rosenthal
(Communications Unit Leader)	Name: GEORGE ROSENTHAL
ICS 205	Date/Time: 12/3/16 1400

Finance Notes, 12/4/2016

For **ALL** resources:

- Please turn in CTRs and/or shift tickets **daily**.
- Record your request number (i.e., E-1, O-1, C-1) on CTRs and shift tickets. For shift tickets, put the number in the upper right hand corner.
- Record all of the meal breaks taken during your operational period, with a **minimum** of one during each shift. If no meal break is recorded, justification must be included in remarks.
- Document the reason for Hazard Pay or other differential (i.e., Environmental Pay) in remarks.

For **AD & CONTRACTED RESOURCES**:

- Please bring us a copy of your hotel and any other reimbursable expense receipts as soon as you are able. We would like to get them entered ahead of demobilization to help speed up the process.

Travel Rules:

Agency resources assigned to an incident or engaged in initial attack fire response will adhere to the current agency work/rest policy for determining length of duty-day.

- No driver will drive more than 10 hours (behind the wheel) within any duty day.
- Multiple drivers in a single vehicle may drive up to the duty-day limitation provided no driver exceeds the individual driving (behind the wheel) time limitation of 10 hours.
- A driver shall drive only if they have had at least 8 consecutive hours off duty before beginning a shift.

Exception to the minimum off-duty hour requirement is allowed when **essential** to:

- accomplish **immediate** and **critical** suppression objectives, or
- address **immediate** and **critical** firefighter or public safety issues.

As stated in the current agency work/rest policy, documentation of mitigation measures used to reduce fatigue is required for drivers who exceed 16 hour work shifts. This is required regardless of whether the driver was still compliant with the 10 hour individual (behind the wheel) driving time limitations.

Rock Mountain Fire Update Southern Area Gold Team

Information: (470) 208-2866
rockmountainfire@gmail.com



Chattahoochee-Oconee
and Nantahala National
Forests



North Carolina
Forest Service



Southern Area Incident
Management Gold
Team

The Southern Area Incident Management Gold Team will transition the Rock Mountain Fire incident back to a Type 4 organization on the Chattahoochee National Forest. We appreciate the support and incredible generosity that we received from the community in the few short weeks that we were here.

We will be leaving some resources in place to continue suppression repair work on dozer and hand lines until work is completed.

In a time of crisis people naturally want to reach out and help. We appreciate those efforts and have developed a list of suggestions. The Gold Team encourages the public to continue supporting local community organizations that assist firefighting efforts. Here are just a few listed below:

- Join or support your local volunteer fire department or emergency organizations- they need your generosity since they are the first responders in many cases.
- Donate to local charitable organizations like the Red Cross.
- **DEFENSIBLE SPACE AROUND YOUR HOME**- give emergency responders and yourself a safe area to retreat to or to defend your home in.
- Donations to Wildland Firefighter Foundation
 - <https://wffoundation.org/>



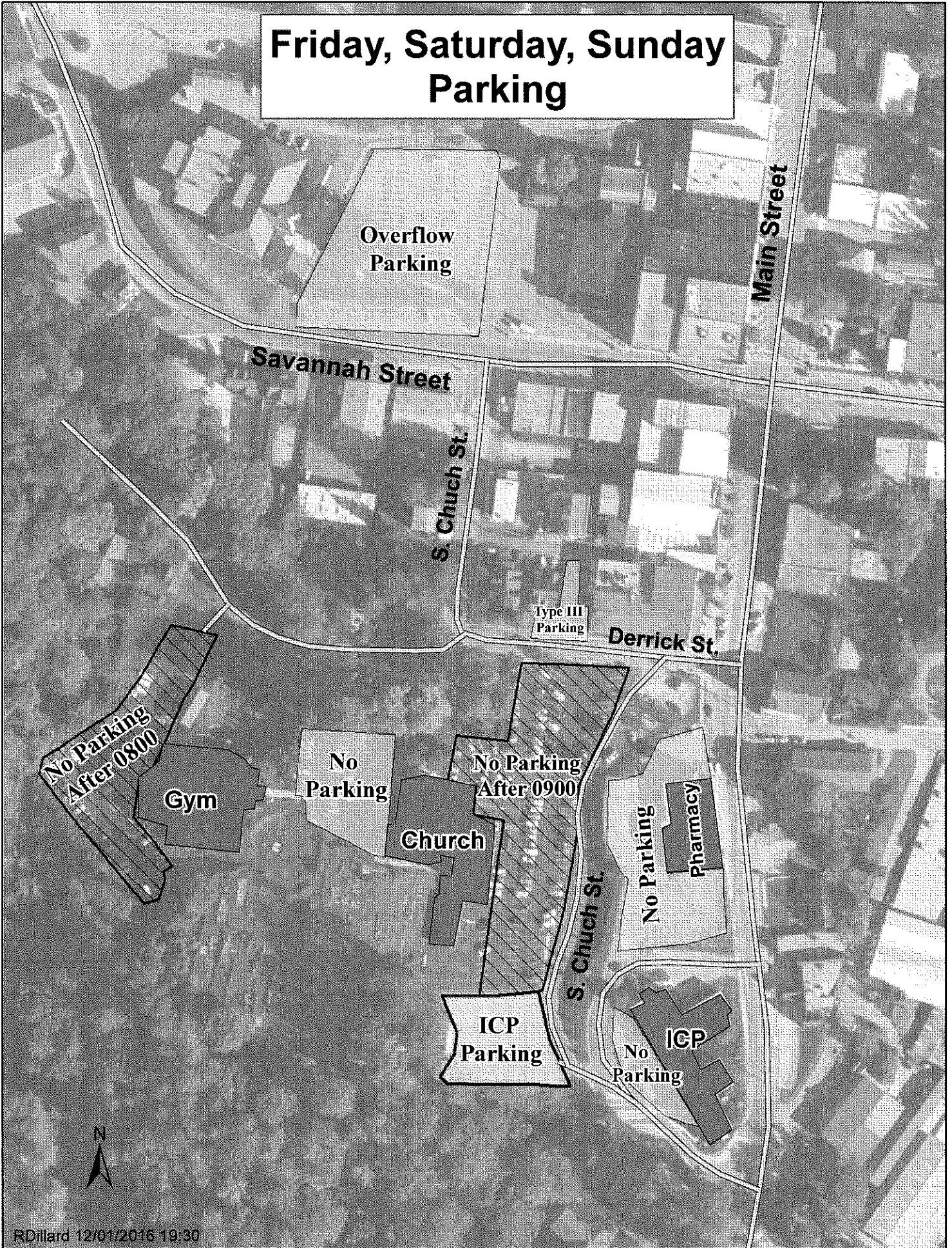
Wordpress Blog

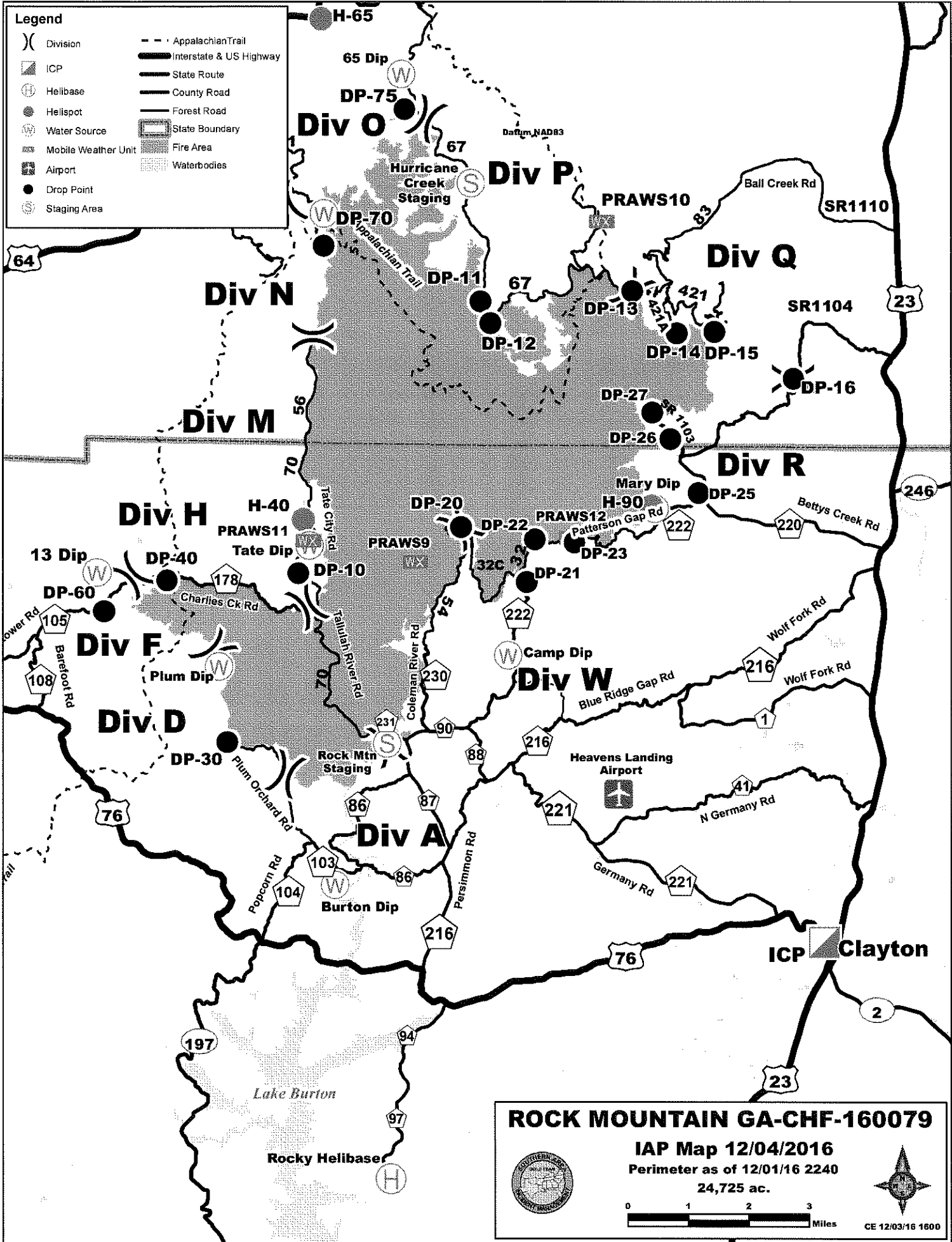
InciWeb: <http://inciweb.nwcg.gov/incident/5100>
Blog: <https://rockmountainfire.wordpress.com/>
Twitter: @ChattOconeeNF
Facebook: ChattOconeeNF
Chattahoochee-Oconee Website: <http://www.fs.usda.gov/conf>



InciWeb

Friday, Saturday, Sunday Parking





ROCK MOUNTAIN GA-CHF-160079

IAP Map 12/04/2016

Perimeter as of 12/01/16 2240
24,725 ac.

Miles

CE 12/03/16 1600



To: All Incident Personnel, Rock Mountain Fire

As Southern Area Type II Incident Commander, I am committed to a policy of “zero tolerance” of inappropriate behavior during incident operations. Any form of harassment, discriminatory practices, or disrespectful behavior will not be tolerated. Known or reported acts will be dealt with appropriately.

I am particularly concerned about the perception that alcohol has a place in any of the Incident facilities. It is not appropriate to indulge in alcoholic beverages during any fire assignment.

The Teams from the Southern Region have a team expectation of “NO ALCOHOL” from the time of dispatch until the time of physical release from the Incident. Members of the Team voluntarily comply with this expectation; all incident personnel will be expected to do so also.

We endorse, support, and expect an attitude of mutual respect for all Incident personnel and the public we serve. We also, endorse the attitude and work ethic that places “Safety First, every time on every Incident.” We expect nothing less.

/s/ Steve Parrish
Incident Commander
Southern Area Gold Team

Medical 9-Line Information

Date: _____ Time: _____ Location: _____

Line	Information	Notes:
1.	<p>Level of Severity:</p> <p><input type="checkbox"/> RED – (Airway obstruction, Difficulty Breathing, Major Blood Loss Cardiac chest pain, Crush Injury to the chest, Penetrated object, Open fracture, 2° or 3° burn more than 4 palm sizes)</p> <p><input type="checkbox"/> YELLOW – (Closed fracture, Significant trauma, Lacerations and bleeding not controlled by direct pressure, Not able to walk, 2° or 3° burn, no more than 1 or 2 palm sizes)</p> <p><input type="checkbox"/> GREEN – (Small area abrasions or lacerations, bleeding controlled By pressure, Minor sprain, general sickness)</p>	<p align="center">Triage Page 48, IRPG-2010</p> <p align="center">Code 3 ALS Ambulance or Medivac, Helicopter Medical Radio traffic Priority Emergency radio traffic restricted to: On site Medic, DIV. SUP, or on scene IC</p> <p align="center">Ambulance or consider air transport if at a remote location. Medical radio traffic may have priority as Above.</p> <p align="center">MEDICAL TRANSPORT via crew, ground support, field medic, or air if at a remote location. Fire Radio traffic unchanged.</p>
2.	<p>Patient Assessment/ Injuries & Treatment</p> <p>Patient #1 _____ _____ _____</p> <p>Patient #2 _____ _____ _____</p>	<p align="center">Assessment Page 42, IRPG – 2010 Treatment Page 41, 43-47</p> <ul style="list-style-type: none"> • Level of Consciousness • Breathing Rate • Pulse Rate • Skin Condition – Pink or Pale, Warm or Cold <p align="center">Injury:</p> <p>Bleeding Heat Fracture Burns Head Injury Bee Sting Eye Sex and age of victim</p>
3.	<p>Patient Location</p> <p>_____</p> <p>Lat: _____ ° _____ ' , Long: _____ ° _____ '</p>	<p>Camp ground, trail, road intersection, Drop Point, Staging Area, Division, Spike Camp, Line area or GPS</p>
4.	<p>Additional Equipment or Medic Needed:</p> <p>_____</p>	<p>Hoist, SKED, Backboard, Litter, Rope, Paramedic, Trauma Bag, O2, AED</p>
5.	<p>On Scene Medic and IC:</p> <p>_____</p>	<p>Crew medic, Field medic, wilderness First Aid provider Who is the IC for this incident?</p>
6.	<p>Operational Channel:</p> <p>Command _____ Tactical _____</p> <p>EMS Helicopter Contact Air Guard – RX 168.625 TX 168.625 Tone 110.9</p>	<p>What frequency or channel will the Incident Be run on?</p>
7.	<p>LZ Location / GPS/staging area for EMS</p> <p>Lat: _____ ° _____ ' , Long: _____ ° _____ '</p> <p>Ground Contact: _____</p>	<p>LZ Area Selection Page 57, IRPG – 2010</p> <p>Set GPS on WGS -84 Use Degrees, Minutes, and Tenths of Minutes (Lat 00° 00.00 – Long 000° 00.000)</p>
8.	<p>LZ Special Hazards</p> <p>_____</p>	<p>Trees, power lines, wind direction, slope</p>
9.	<p>Patient Affiliation</p> <p>_____</p>	<p>Agency, Contractor, Military</p>