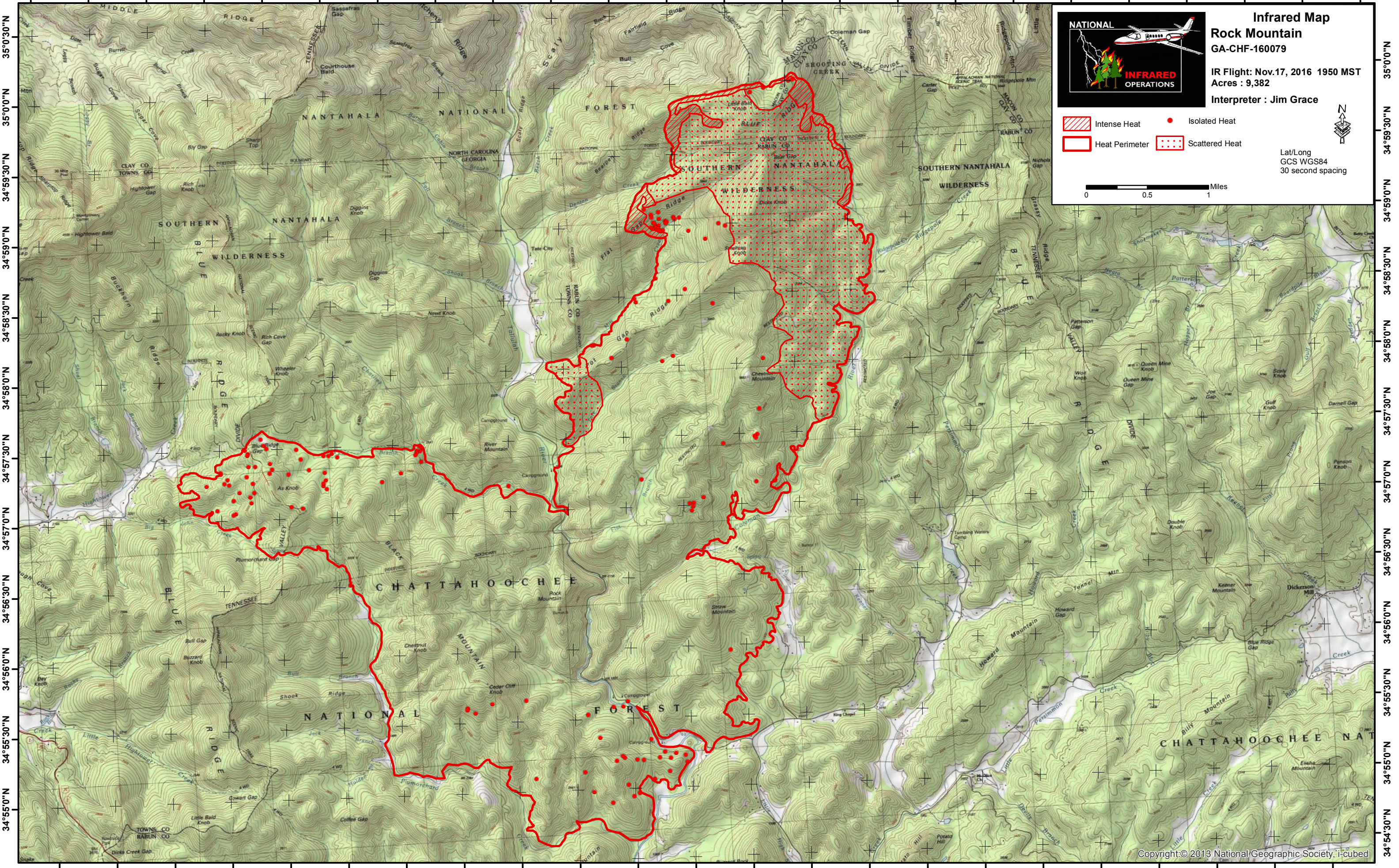
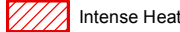

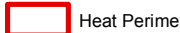
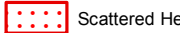
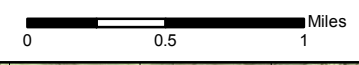


83°37'30"W 83°37'0"W 83°36'30"W 83°36'0"W 83°35'30"W 83°35'0"W 83°34'30"W 83°34'0"W 83°33'30"W 83°33'0"W 83°32'30"W 83°32'0"W 83°31'30"W 83°31'0"W 83°30'30"W 83°30'0"W 83°29'30"W 83°29'0"W 83°28'30"W 83°28'0"W 83°27'30"W 83°27'0"W 83°26'30"W 83°26'0"W



**Infrared Map**  
**Rock Mountain**  
GA-CHF-160079  
IR Flight: Nov.17, 2016 1950 MST  
Acres : 9,382  
Interpreter : Jim Grace

-  Intense Heat
-  Isolated Heat
-  Heat Perimeter
-  Scattered Heat



Lat/Long  
GCS WGS84  
30 second spacing

83°37'30"W 83°37'0"W 83°36'30"W 83°36'0"W 83°35'30"W 83°35'0"W 83°34'30"W 83°34'0"W 83°33'30"W 83°33'0"W 83°32'30"W 83°32'0"W 83°31'30"W 83°31'0"W 83°30'30"W 83°30'0"W 83°29'30"W 83°29'0"W 83°28'30"W 83°28'0"W 83°27'30"W 83°27'0"W 83°26'30"W 83°26'0"W