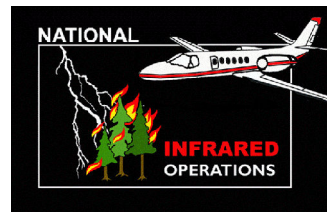
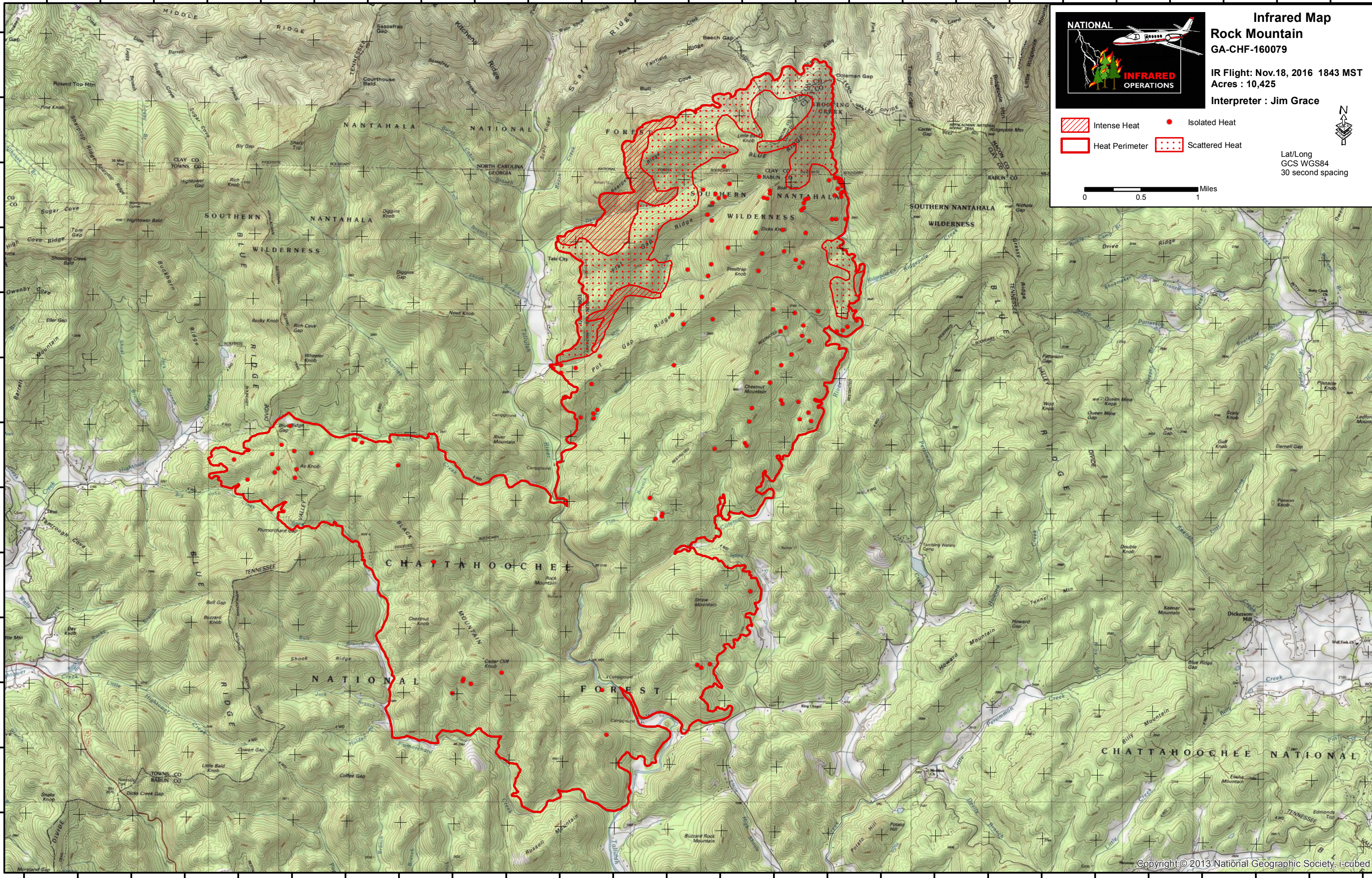






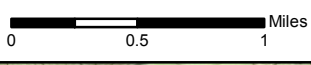
83°38'0"W 83°37'30"W 83°37'0"W 83°36'30"W 83°36'0"W 83°35'30"W 83°35'0"W 83°34'30"W 83°34'0"W 83°33'30"W 83°33'0"W 83°32'30"W 83°32'0"W 83°31'30"W 83°31'0"W 83°30'30"W 83°30'0"W 83°29'30"W 83°29'0"W 83°28'30"W 83°28'0"W 83°27'30"W 83°27'0"W 83°26'30"W 83°26'0"W

35°0'30"N
35°0'0"N
34°59'30"N
34°59'0"N
34°58'30"N
34°58'0"N
34°57'30"N
34°57'0"N
34°56'30"N
34°56'0"N
34°55'30"N
34°55'0"N
34°54'30"N



Infrared Map
Rock Mountain
GA-CHF-160079
IR Flight: Nov.18, 2016 1843 MST
Acres : 10,425
Interpreter : Jim Grace

-  Intense Heat
-  Isolated Heat
-  Heat Perimeter
-  Scattered Heat



Lat/Long
GCS WGS84
30 second spacing

83°38'0"W 83°37'30"W 83°37'0"W 83°36'30"W 83°36'0"W 83°35'30"W 83°35'0"W 83°34'30"W 83°34'0"W 83°33'30"W 83°33'0"W 83°32'30"W 83°32'0"W 83°31'30"W 83°31'0"W 83°30'30"W 83°30'0"W 83°29'30"W 83°29'0"W 83°28'30"W 83°28'0"W 83°27'30"W 83°27'0"W 83°26'30"W 83°26'0"W 83°25'30"W

35°0'30"N
35°0'0"N
34°59'30"N
34°59'0"N
34°58'30"N
34°58'0"N
34°57'30"N
34°57'0"N
34°56'30"N
34°56'0"N
34°55'30"N
34°55'0"N
34°54'30"N