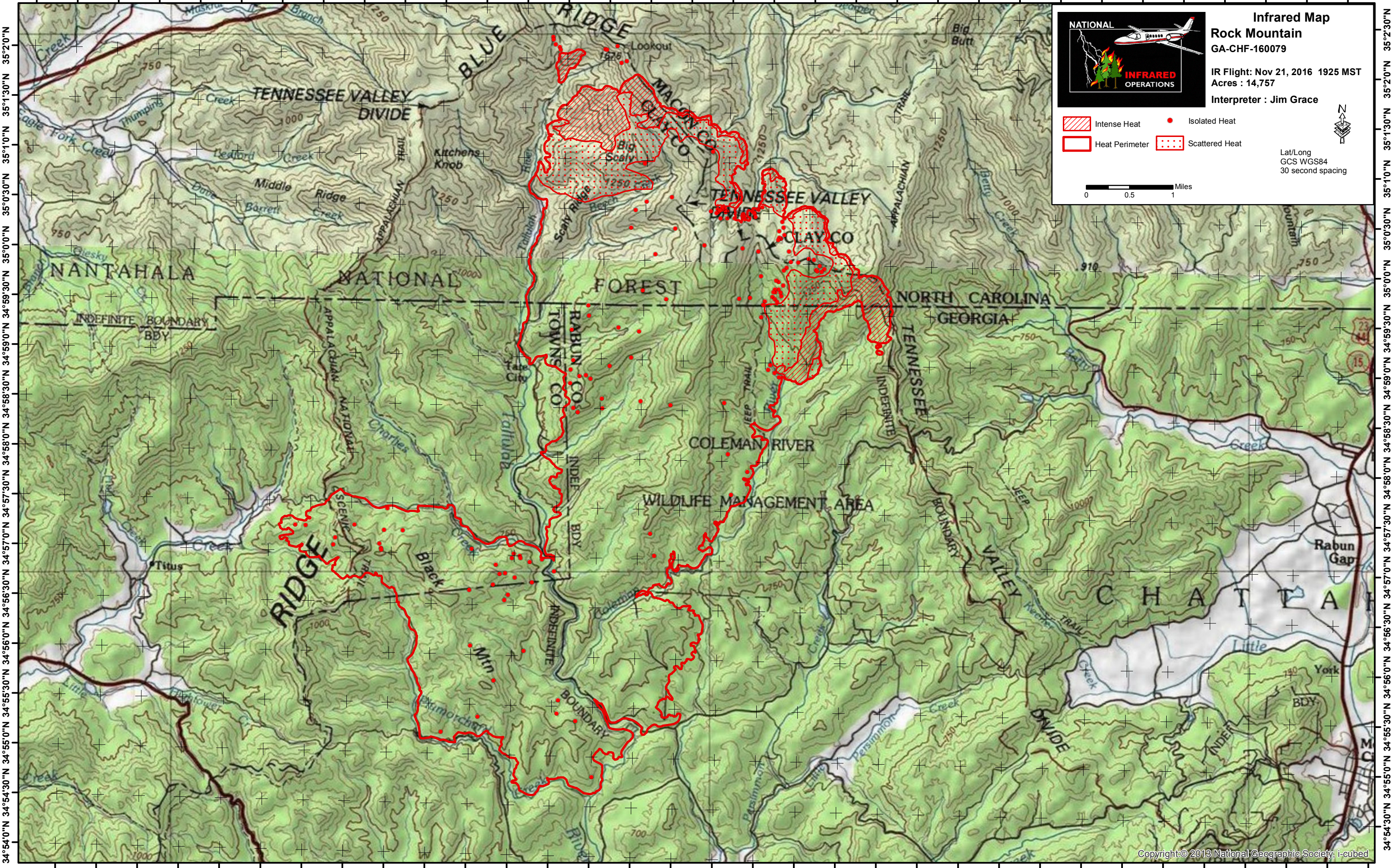


83°39'30"W 83°38'30"W 83°37'30"W 83°36'30"W 83°35'30"W 83°34'30"W 83°33'30"W 83°32'30"W 83°31'30"W 83°30'30"W 83°29'30"W 83°28'30"W 83°27'30"W 83°26'30"W 83°25'30"W 83°24'30"W 83°23'30"W



NATIONAL INFRARED OPERATIONS

Infrared Map
Rock Mountain
 GA-CHF-160079

IR Flight: Nov 21, 2016 1925 MST
 Acres : 14,757
 Interpreter : Jim Grace

Lat/Long
 GCS WGS84
 30 second spacing

83°38'30"W 83°37'30"W 83°36'30"W 83°35'30"W 83°34'30"W 83°33'30"W 83°32'30"W 83°31'30"W 83°30'30"W 83°29'30"W 83°28'30"W 83°27'30"W 83°26'30"W 83°25'30"W 83°24'30"W 83°23'30"W

34°54'0"N 34°54'30"N 34°55'0"N 34°55'30"N 34°56'0"N 34°56'30"N 34°57'0"N 34°57'30"N 34°58'0"N 34°58'30"N 34°59'0"N 34°59'30"N 35°0'0"N 35°0'30"N 35°1'0"N 35°1'30"N 35°2'0"N