

83°36'0"W 83°35'0"W 83°34'0"W 83°33'0"W 83°32'0"W 83°31'0"W 83°30'0"W 83°29'0"W 83°28'0"W

35°4'0"N 35°3'30"N 35°3'0"N 35°2'30"N 35°2'0"N 35°1'30"N 35°1'0"N 35°0'30"N 35°0'0"N 34°59'30"N 34°59'0"N 34°58'30"N 34°58'0"N 34°57'30"N 34°57'0"N 34°56'30"N 34°56'0"N 34°55'30"N 34°55'0"N 34°54'30"N 34°54'0"N 34°53'30"N 34°53'0"N



Infrared Map

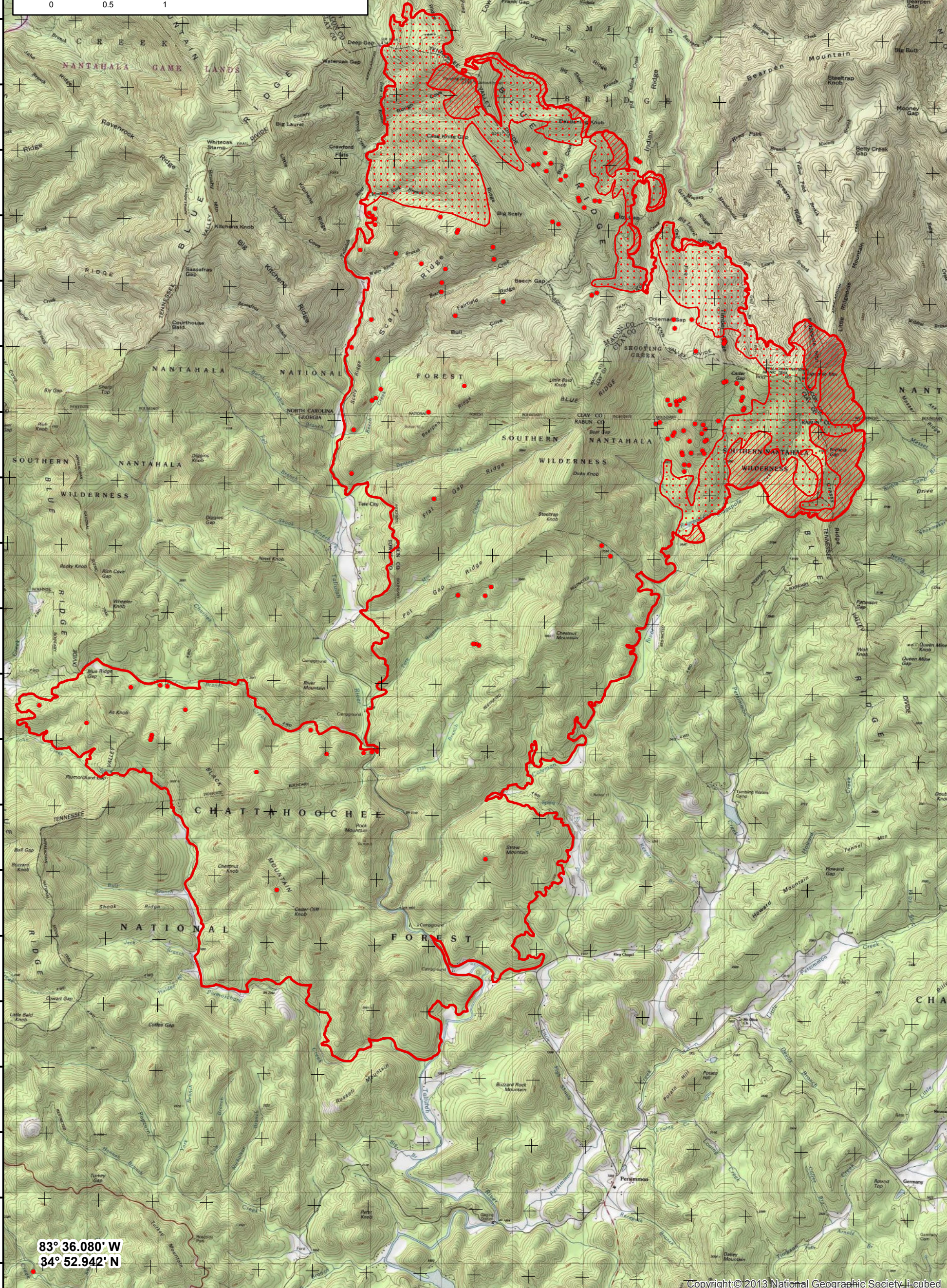
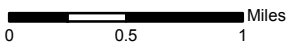
Rock Mountain
GA-CHF-160079

IR Flight: Nov 22, 2016 1902 MST
Acres : 16,698

Interpreter : Jim Grace

- Intense Heat
- Isolated Heat
- Heat Perimeter
- Scattered Heat

Lat/Long
GCS WGS84
30 second spacing



83° 36.080' W
34° 52.942' N

83°36'0"W 83°35'0"W 83°34'0"W 83°33'0"W 83°32'0"W 83°31'0"W 83°30'0"W 83°29'0"W 83°28'0"W