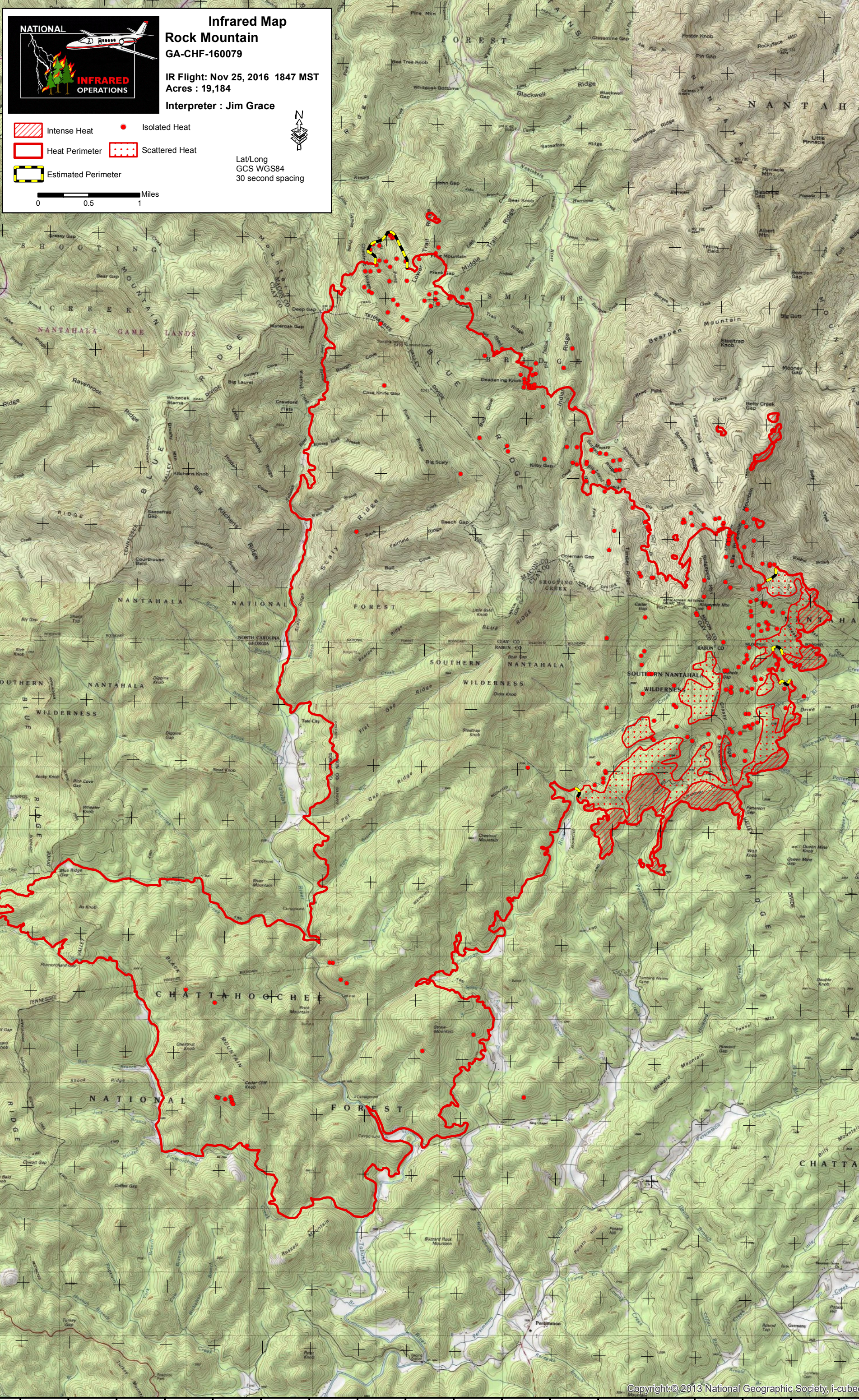


83°36'0"W 83°35'0"W 83°34'0"W 83°33'0"W 83°32'0"W 83°31'0"W 83°30'0"W 83°29'0"W 83°28'0"W



**NATIONAL INFRARED OPERATIONS**

**Infrared Map**  
**Rock Mountain**  
**GA-CHF-160079**  
 IR Flight: Nov 25, 2016 1847 MST  
 Acres : 19,184  
 Interpreter : Jim Grace

Intense Heat  
 Heat Perimeter  
 Estimated Perimeter  
 Isolated Heat  
 Scattered Heat

Lat/Long  
 GCS WGS84  
 30 second spacing

0 0.5 1 Miles

83°36'0"W 83°35'0"W 83°34'0"W 83°33'0"W 83°32'0"W 83°31'0"W 83°30'0"W 83°29'0"W 83°28'0"W

35°50'0"N 35°43'0"N 35°40'0"N 35°33'0"N 35°30'0"N 35°23'0"N 35°20'0"N 35°13'0"N 35°10'0"N 35°03'0"N 34°59'30"N 34°59'0"N 34°58'30"N 34°58'0"N 34°57'30"N 34°57'0"N 34°56'30"N 34°56'0"N 34°55'30"N 34°55'0"N 34°54'30"N 34°54'0"N 34°53'30"N 34°53'0"N