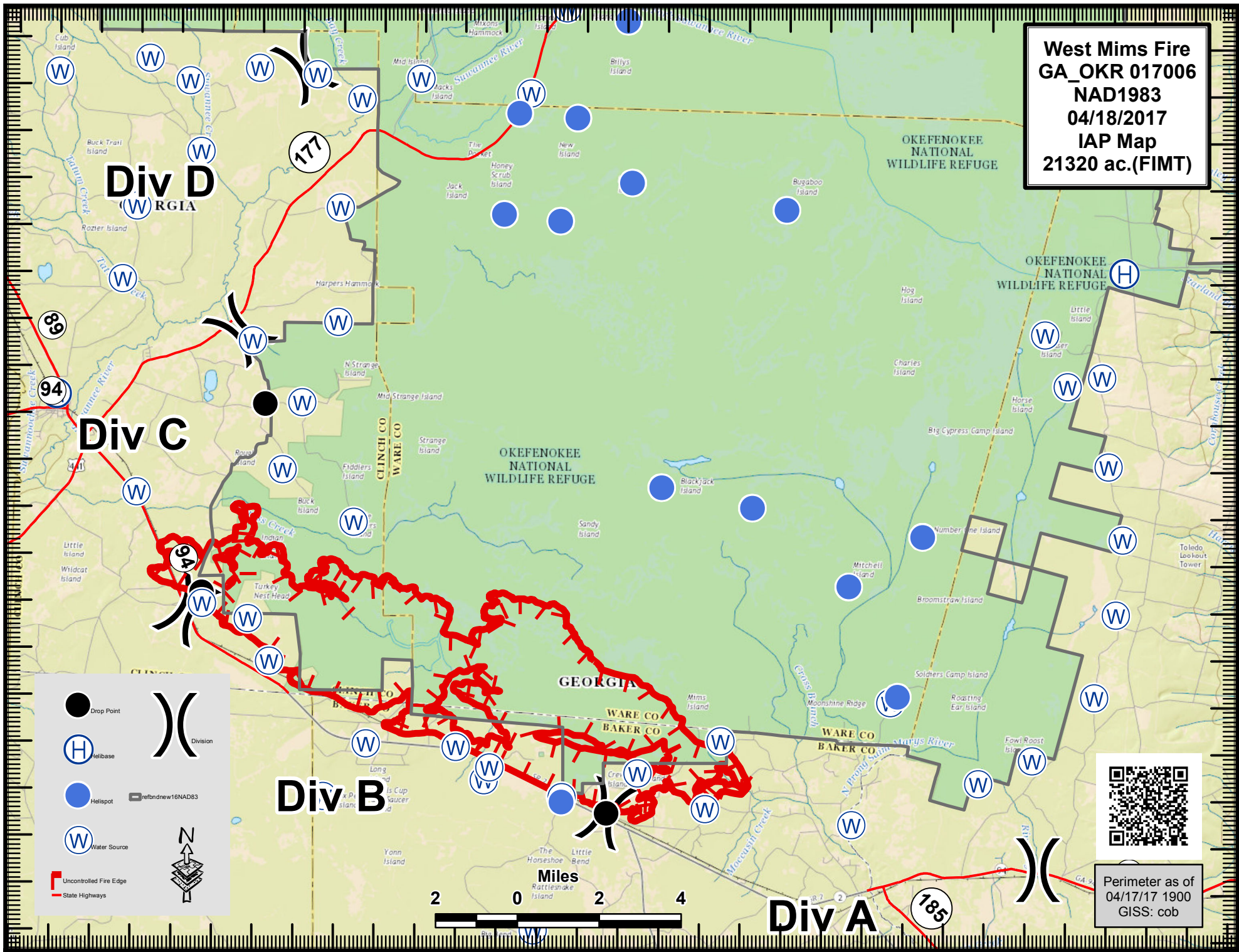


82°35'W 82°33'W 82°31'W 82°29'W 82°27'W 82°25'W 82°23'W 82°21'W 82°19'W 82°17'W 82°15'W 82°13'W 82°11'W 82°9'W 82°7'W 82°5'W

30°49'N  
30°47'N  
30°45'N  
30°43'N  
30°41'N  
30°39'N  
30°37'N  
30°35'N  
30°33'N  
30°31'N

**West Mims Fire**  
GA\_OKR 017006  
NAD1983  
04/18/2017  
IAP Map  
21320 ac.(FIMT)



- Drop Point
- (H) Helibase
- Helispot
- (W) Water Source
- ▬ Uncontrolled Fire Edge
- ▬ State Highways

Division

refndnew16NAD83

N



Perimeter as of  
04/17/17 1900  
GISS: cob