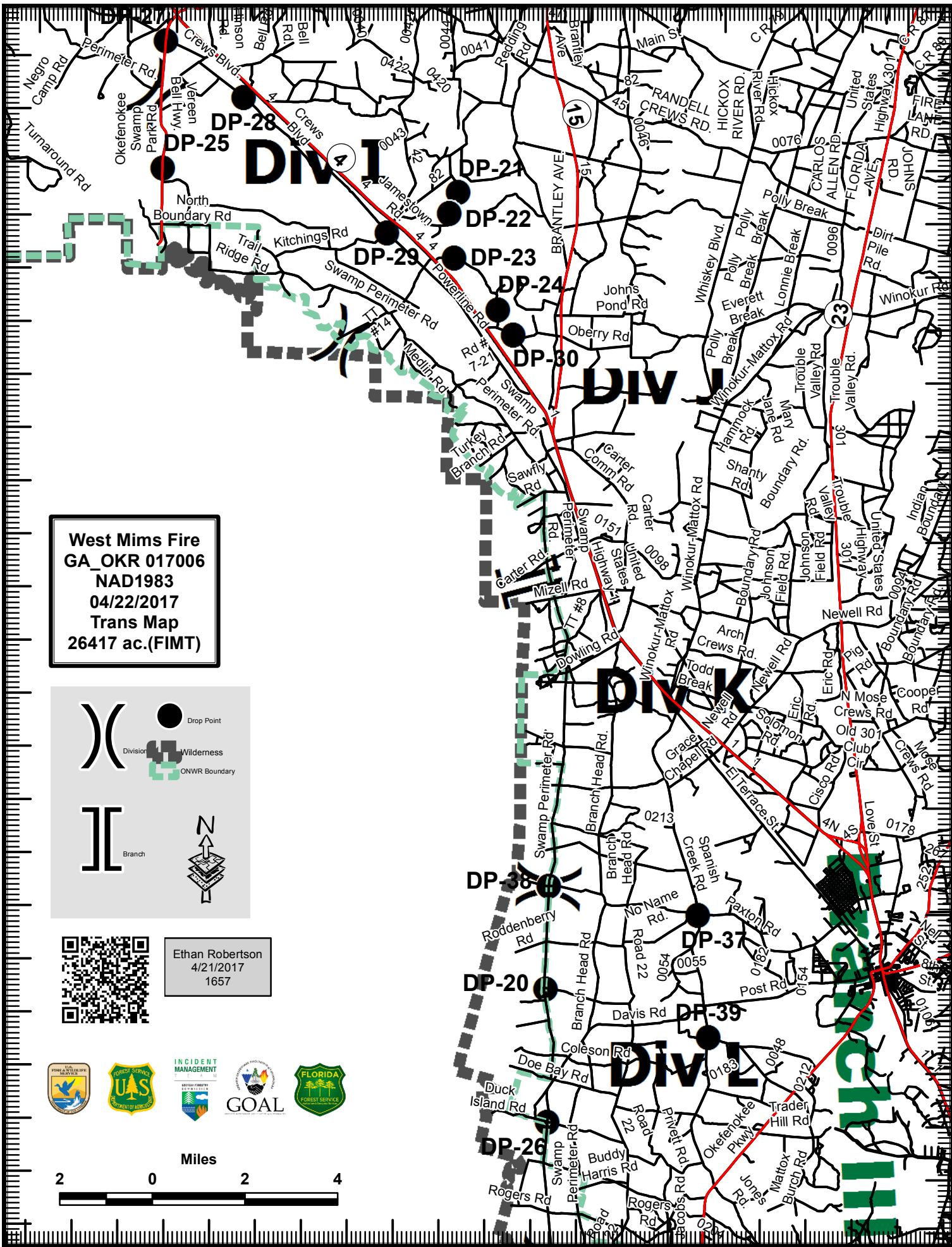


82°18'W 82°16'W 82°14'W 82°12'W 82°10'W 82°8'W 82°6'W 82°4'W 82°2'W 82°0'W

31°7'N 31°6'N 31°5'N 31°4'N 31°3'N 31°2'N 31°1'N 31°0'N 30°58'N 30°56'N 30°54'N 30°52'N 30°50'N 30°48'N 30°46'N

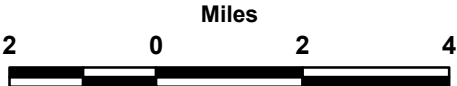


West Mims Fire
GA_OKR 017006
NAD1983
04/22/2017
Trans Map
26417 ac.(FIMT)

Legend symbols for:
Drop Point (black dot)
Division (curved line)
Wilderness (dotted area)
ONWR Boundary (dashed green line)
Branch (double vertical line)
North arrow



Ethan Robertson
4/21/2017
1657



82°18'W 82°16'W 82°14'W 82°12'W 82°10'W 82°8'W 82°6'W 82°4'W 82°2'W 82°0'W