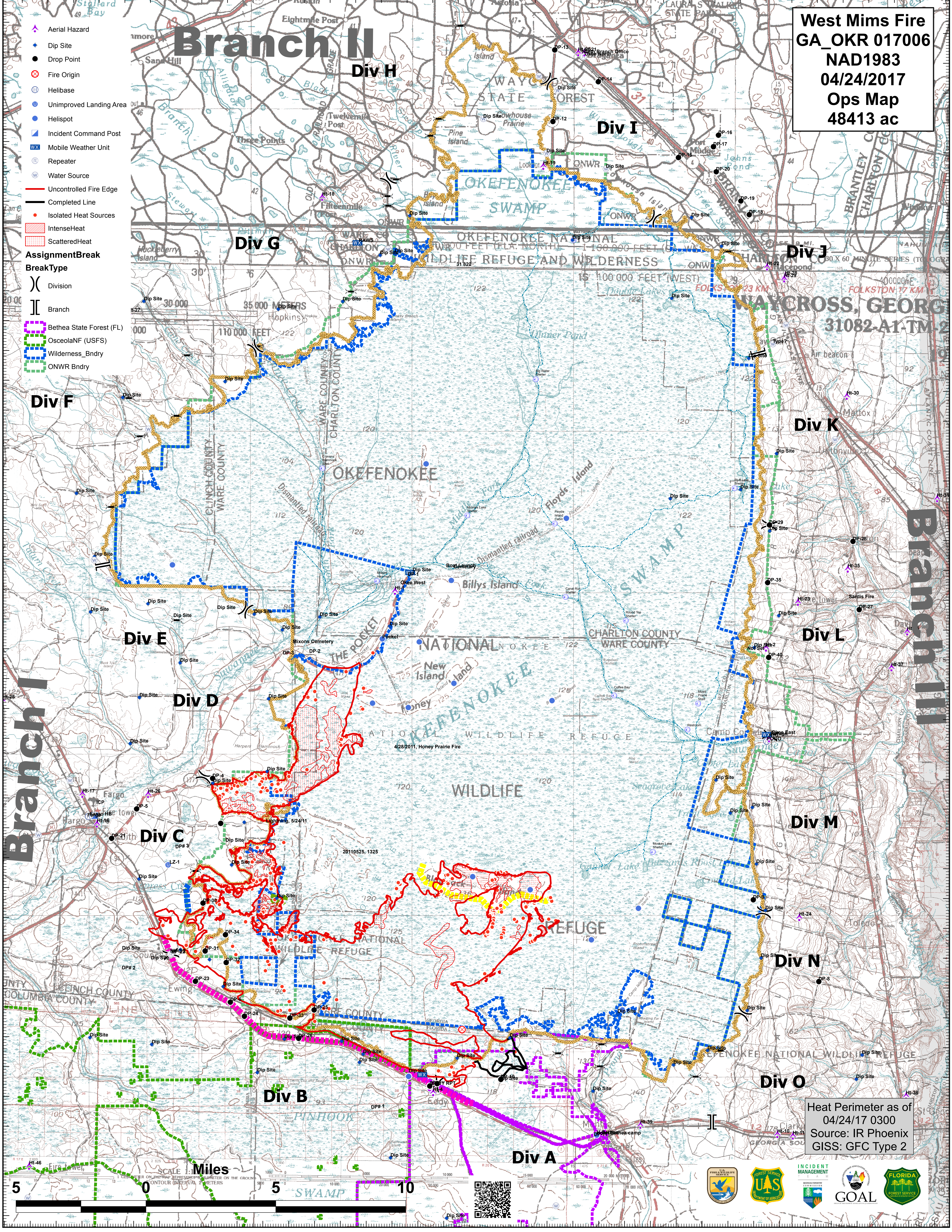


**West Mims Fire**  
**GA\_OKR 017006**  
**NAD1983**  
**04/24/2017**  
**Ops Map**  
**48413 ac**



- Aerial Hazard
- Dip Site
- Drop Point
- Fire Origin
- Helibase
- Unimproved Landing Area
- Helispot
- Incident Command Post
- Mobile Weather Unit
- Repeater
- Water Source
- Uncontrolled Fire Edge
- Completed Line
- Isolated Heat Sources
- IntenseHeat
- ScatteredHeat
- AssignmentBreak**
- BreakType**
- Division
- Branch
- Bethea State Forest (FL)
- OsceolaNF (USFS)
- Wilderness\_Bndry
- ONWR Bndry

**Branch I**

**Branch II**

**Branch III**

Heat Perimeter as of  
 04/24/17 0300  
 Source: IR Phoenix  
 GISS: GFC Type 2

SCALE 1:50,000  
 METERS

5 0 5 10