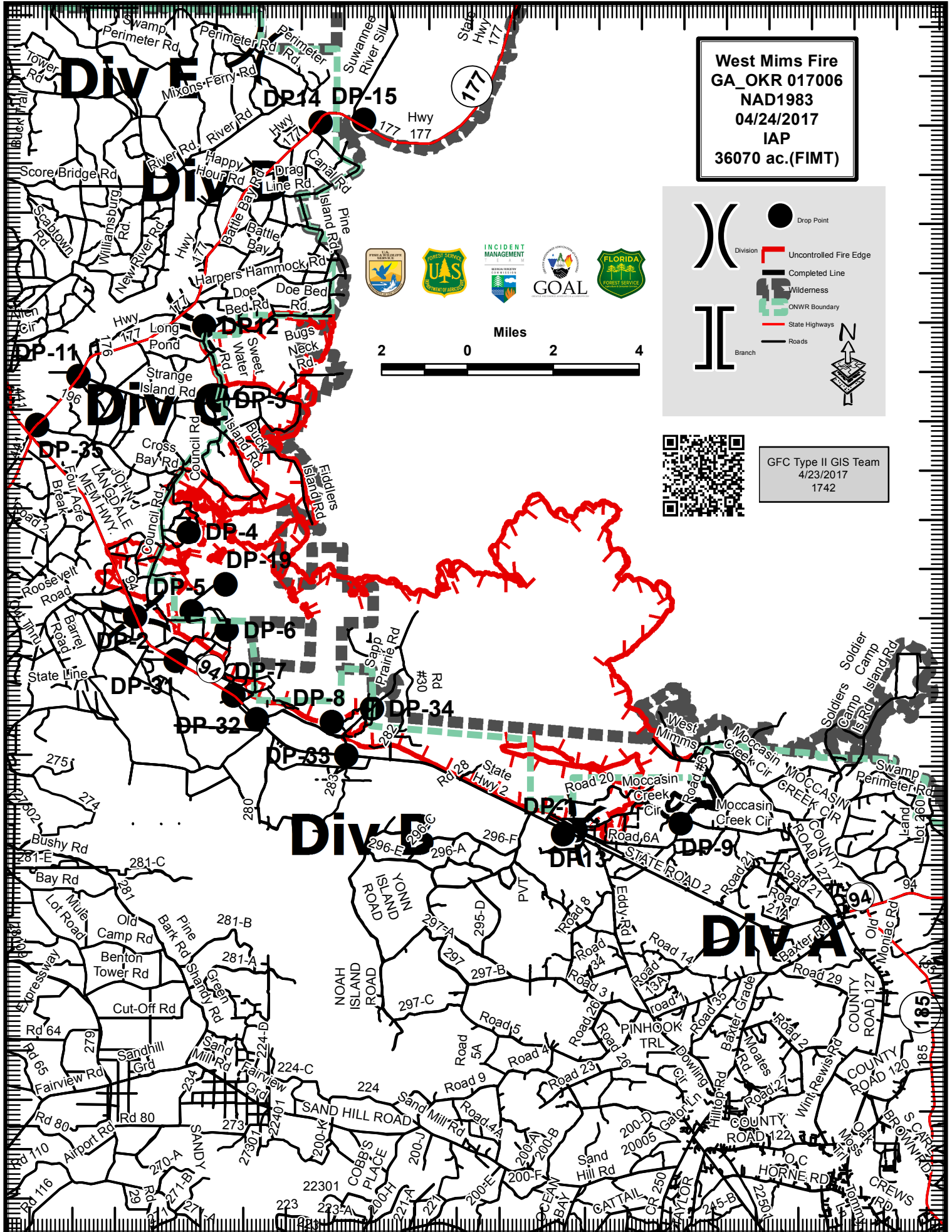


82°32'W 82°30'W 82°28'W 82°26'W 82°24'W 82°22'W 82°20'W 82°18'W 82°16'W 82°14'W 82°12'W

30°49'N 30°47'N 30°45'N 30°43'N 30°41'N 30°39'N 30°37'N 30°35'N 30°33'N 30°31'N 30°29'N 30°27'N 30°25'N



**West Mims Fire**  
**GA\_OKR 017006**  
**NAD1983**  
**04/24/2017**  
**IAP**  
**36070 ac.(FIMT)**

Drop Point  
 Uncontrolled Fire Edge  
 Completed Line  
 Wilderness  
 ONWR Boundary  
 State Highways  
 Roads  
 Branch

Miles

2 0 2 4



GFC Type II GIS Team  
 4/23/2017  
 1742

82°32'W 82°30'W 82°28'W 82°26'W 82°24'W 82°22'W 82°20'W 82°18'W 82°16'W 82°14'W 82°12'W