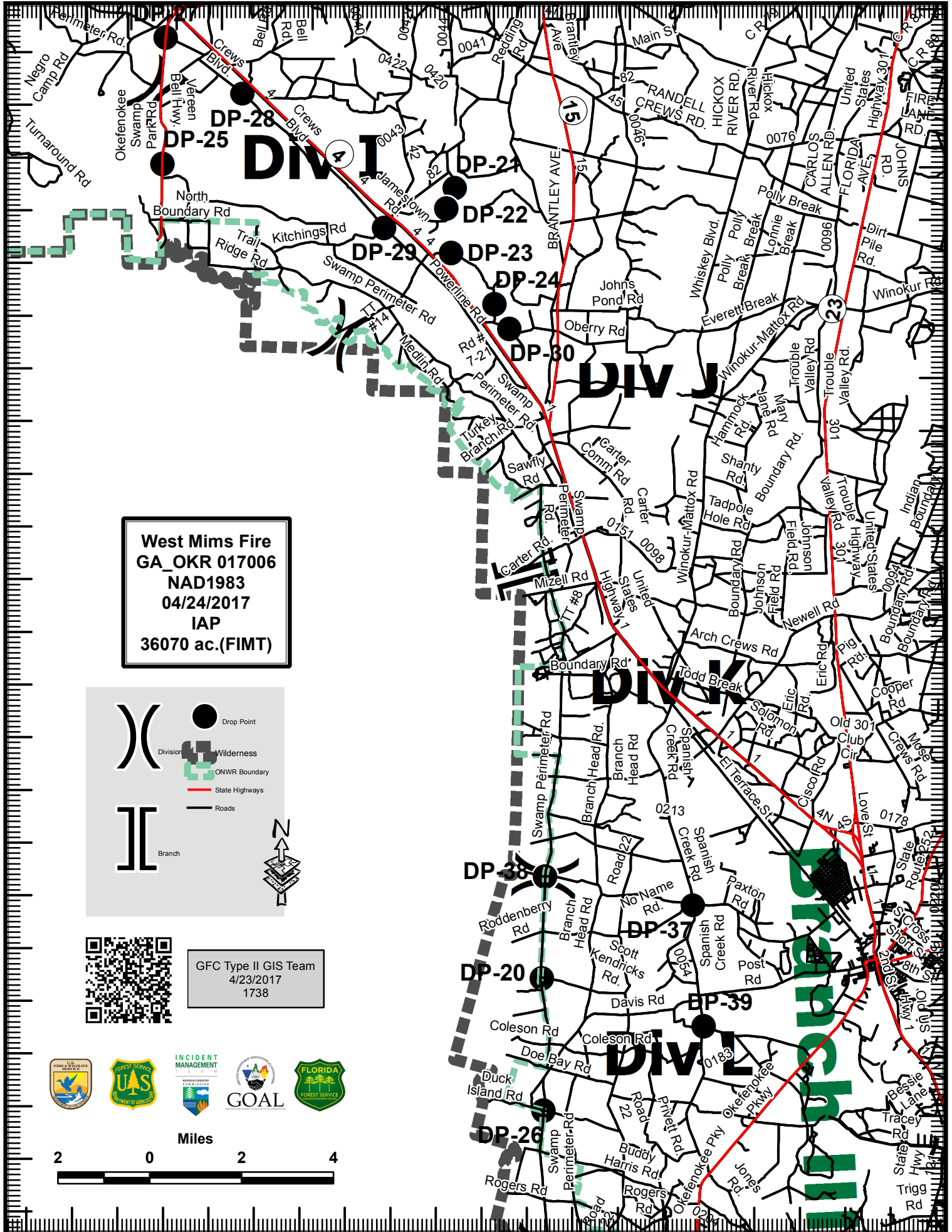


82°18'W 82°16'W 82°14'W 82°12'W 82°10'W 82°8'W 82°6'W 82°4'W 82°2'W 82°0'W

31°7'N 31°5'N 31°3'N 31°1'N 31°0'N 30°58'N 30°56'N 30°54'N 30°52'N 30°50'N 30°48'N 30°46'N

31°8'N 31°6'N 31°4'N 31°2'N 31°0'N 30°58'N 30°56'N 30°54'N 30°52'N 30°50'N 30°48'N 30°46'N



West Mims Fire  
GA\_OKR 017006  
NAD1983  
04/24/2017  
IAP  
36070 ac.(FIMT)

Legend:

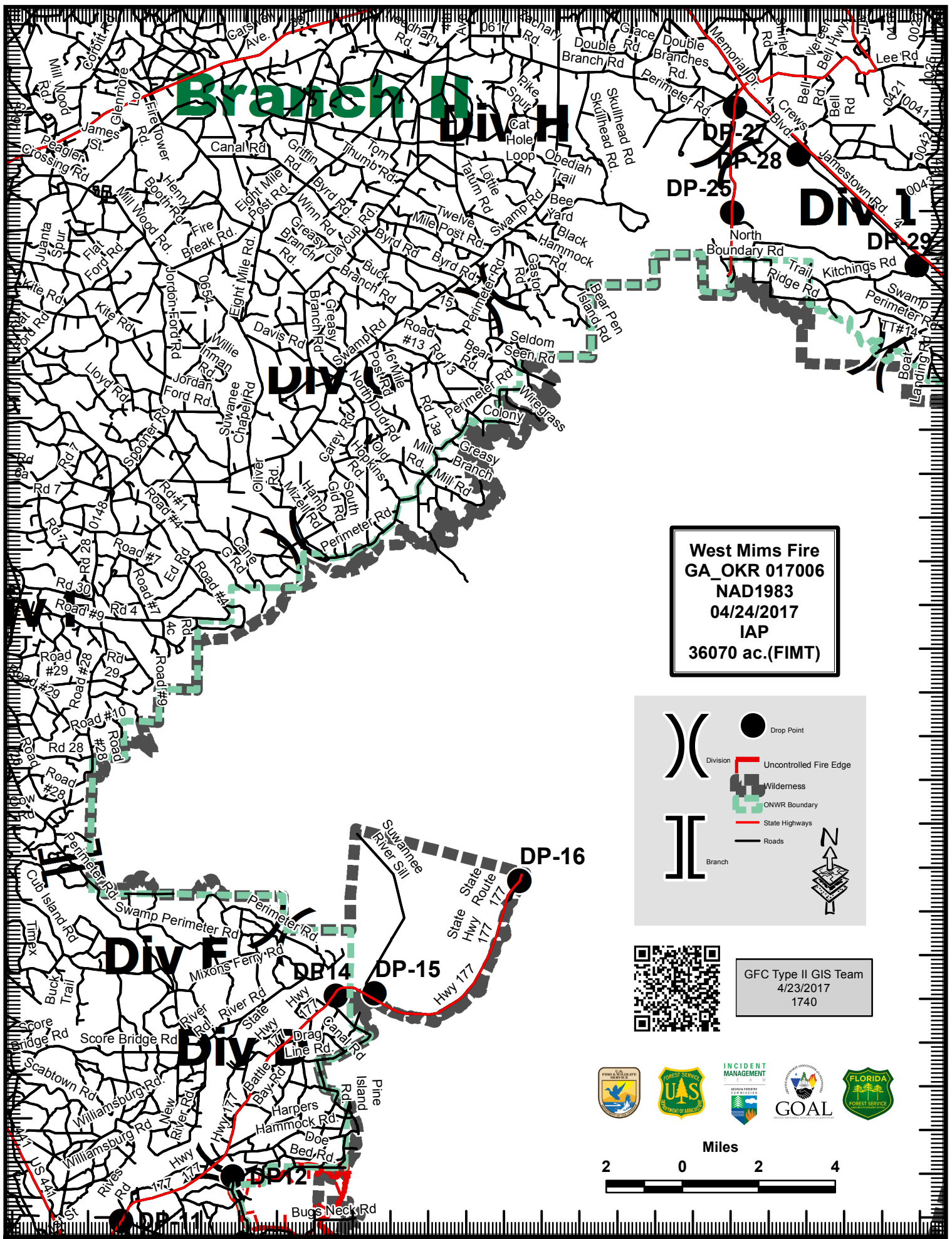
- Drop Point
- Wilderness
- ONWR Boundary
- State Highways
- Roads
- Branch



GFC Type II GIS Team  
4/23/2017  
1738



82°18'W 82°16'W 82°14'W 82°12'W 82°10'W 82°8'W 82°6'W 82°4'W 82°2'W 82°0'W



West Mims Fire  
GA\_OKR 017006  
NAD1983  
04/24/2017  
IAP  
36070 ac.(FIMT)

Legend:

- Drop Point (Black circle)
- Division (Black line with parenthesis symbol)
- Uncontrolled Fire Edge (Red line)
- Wilderness (Grey shaded area)
- ONWR Boundary (Green dashed line)
- State Highways (Red line with double white dashes)
- Roads (Black line)
- Branch (Black line with bracket symbol)

North arrow pointing up.



GFC Type II GIS Team  
4/23/2017  
1740





82°18'W 82°16'W 82°14'W 82°12'W 82°10'W 82°8'W 82°6'W 82°4'W 82°2'W 82°0'W

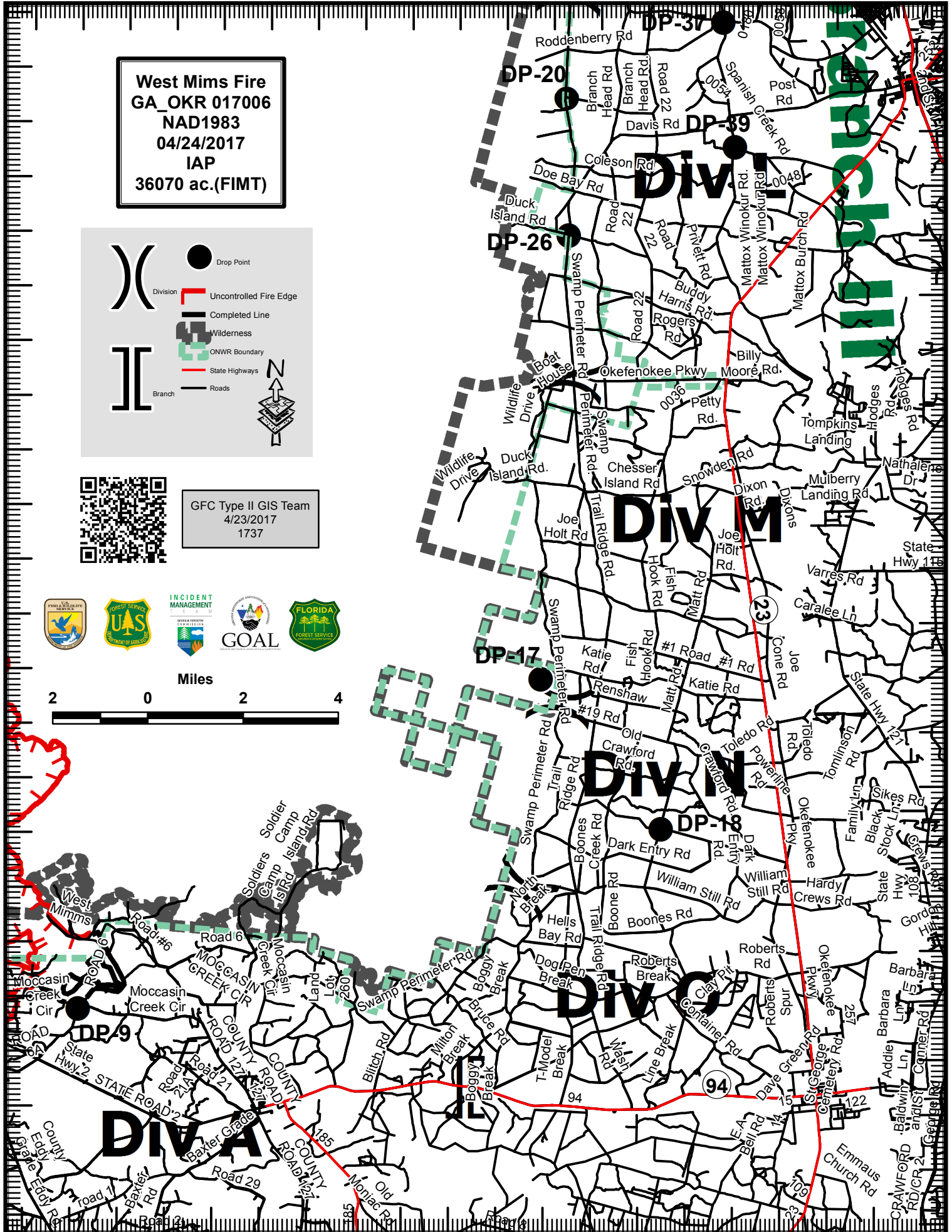
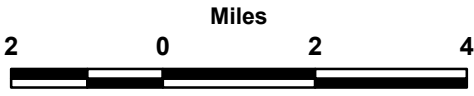
30°51'N 30°49'N 30°47'N 30°45'N 30°43'N 30°41'N 30°39'N 30°37'N 30°35'N 30°33'N 30°31'N 30°29'N

**West Mims Fire**  
GA\_OKR 017006  
NAD1983  
04/24/2017  
IAP  
36070 ac.(FIMT)

- Drop Point
- ( ) Division
- Uncontrolled Fire Edge
- Completed Line
- Wilderness
- ONWR Boundary
- State Highways
- Branch
- Roads



GFC Type II GIS Team  
4/23/2017  
1737

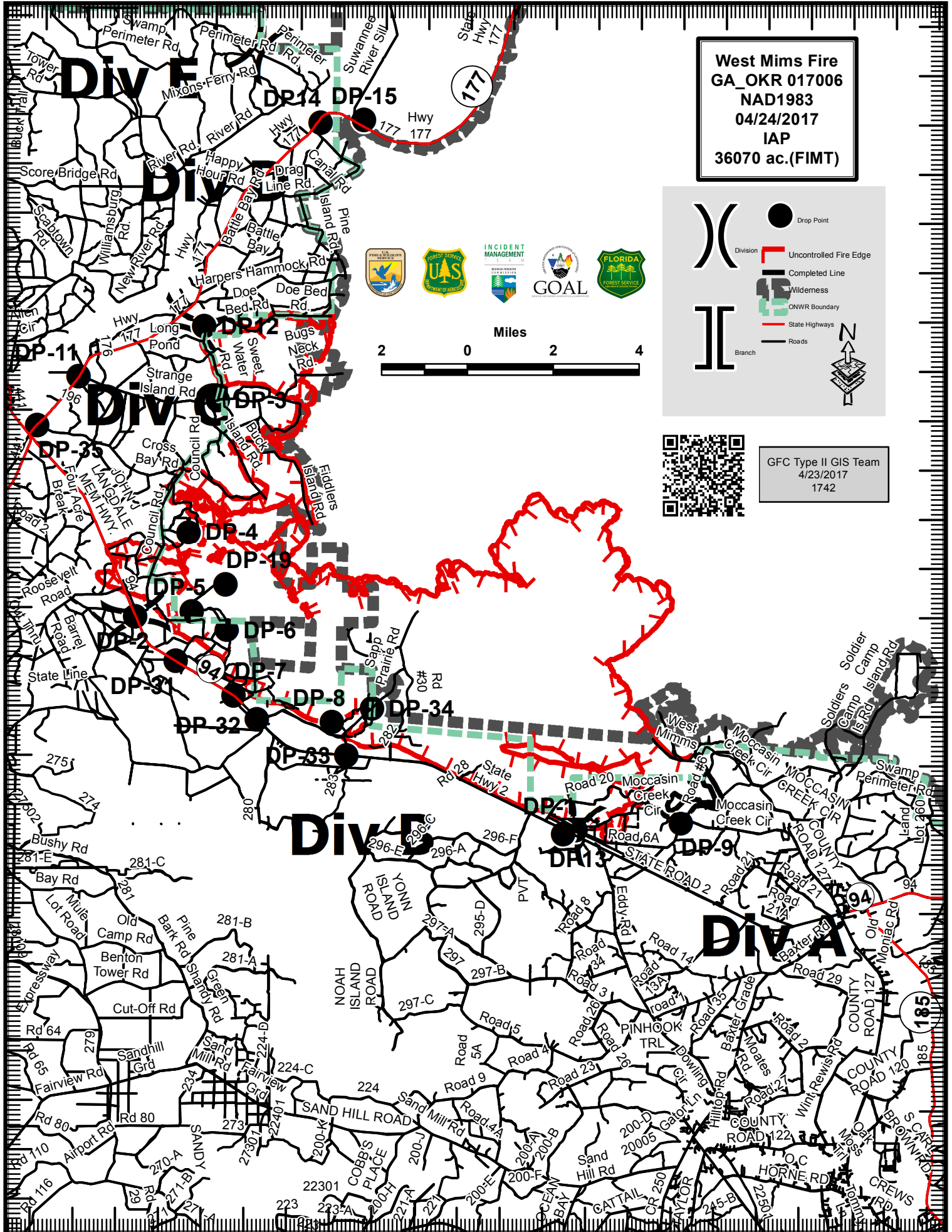


30°50'N 30°48'N 30°46'N 30°44'N 30°42'N 30°40'N 30°38'N 30°36'N 30°34'N 30°32'N 30°30'N

82°18'W 82°16'W 82°14'W 82°12'W 82°10'W 82°8'W 82°6'W 82°4'W 82°2'W 82°0'W

82°32'W 82°30'W 82°28'W 82°26'W 82°24'W 82°22'W 82°20'W 82°18'W 82°16'W 82°14'W 82°12'W

30°49'N 30°47'N 30°45'N 30°43'N 30°41'N 30°39'N 30°37'N 30°35'N 30°33'N 30°31'N 30°29'N 30°27'N 30°25'N



**West Mims Fire**  
**GA\_OKR 017006**  
**NAD1983**  
**04/24/2017**  
**IAP**  
**36070 ac.(FIMT)**

Miles

2 0 2 4



GFC Type II GIS Team  
 4/23/2017  
 1742

82°32'W 82°30'W 82°28'W 82°26'W 82°24'W 82°22'W 82°20'W 82°18'W 82°16'W 82°14'W 82°12'W