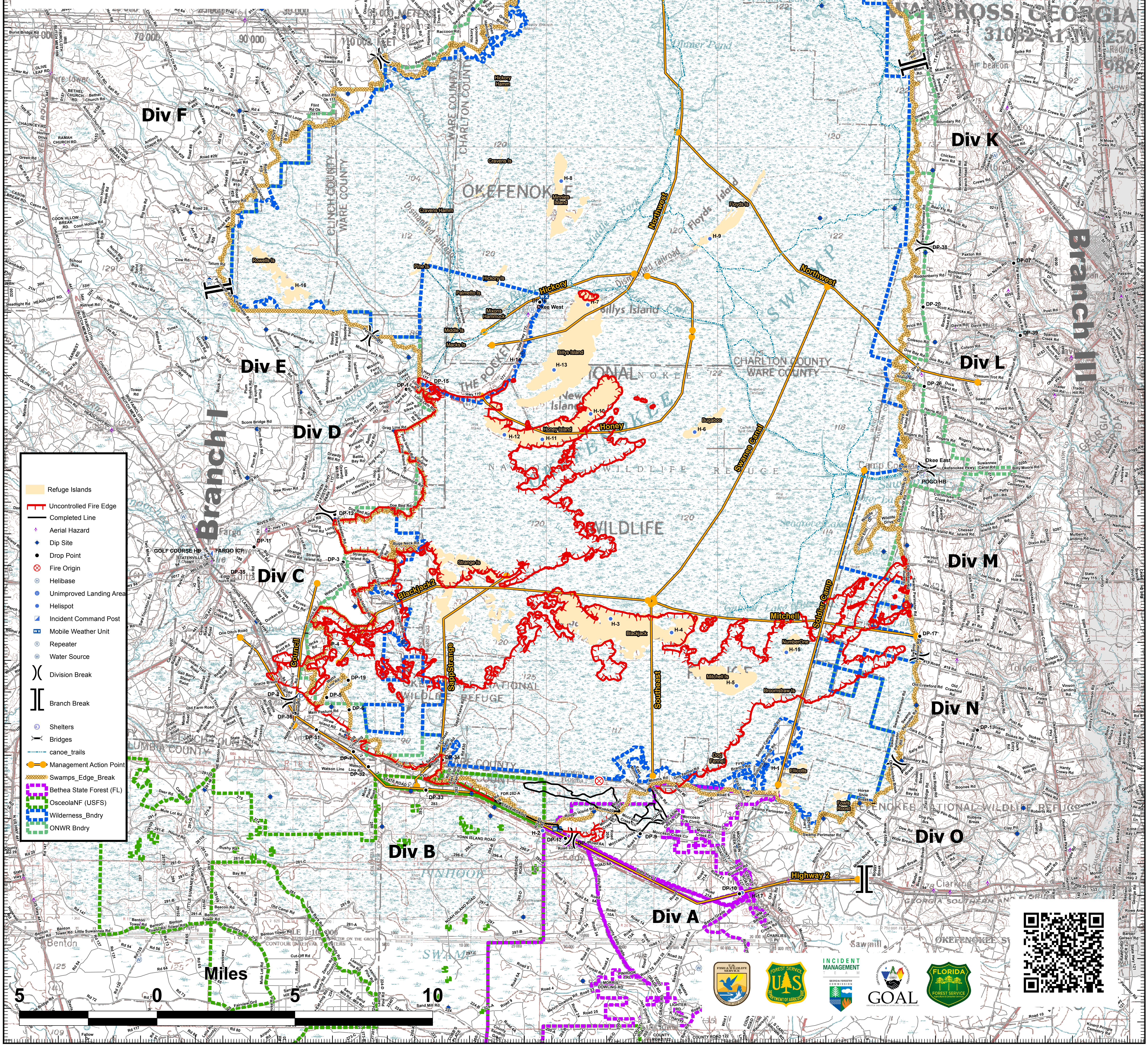


West Mims Fire
GA_OKR 017006
NAD1983
04/28/2017
Ops Map
IR as of 4/27/17, 2233
86,868 acres
GFC Type 2 Team

West Mims	Incident Data Points	Label	Latitude West	Longitude North
DP-1	Drop Point	DP-1	30 32.62160	82 17.58000
DP-2	Drop Point	DP-2	30 36.85073	82 17.85822
DP-3	Drop Point	DP-3	30 41.25494	82 32.10600
DP-4	Drop Point	DP-4	30 36.57192	82 29.17100
DP-5	Drop Point	DP-5	30 38.97878	82 33.68833
DP-6	Drop Point	DP-6	30 36.59123	82 5.58167
DP-7	Drop Point	DP-7	30 35.26622	82 15.10416
DP-8	Drop Point	DP-8	30 34.79518	82 25.59737
DP-9	Drop Point	DP-9	30 32.78859	82 23.75334
DP-10	Drop Point	DP-10	30 30.92574	82 14.21382
DP-11	Drop Point	DP-11	30 41.69900	82 5.15418
DP-12	Drop Point	DP-12	30 42.75500	82 22.18801
DP-13	Drop Point	DP-13	30 38.55800	82 27.85200
DP-14	Drop Point	DP-14	30 46.74334	82 26.60088
DP-15	Drop Point	DP-15	30 46.93236	82 25.68432
DP-16	Drop Point	DP-16	30 46.93236	82 25.68432
DP-17	Drop Point	DP-17	30 38.20854	82 17.72610
DP-18	Drop Point	DP-18	30 36.17833	82 7.64015
DP-19	Drop Point	DP-19	30 37.52281	82 20.47050
DP-20	Drop Point	DP-20	30 49.53562	82 19.94815
DP-21	Drop Point	DP-21	31 4.53774	82 24.85484
DP-22	Drop Point	DP-22	31 4.13184	82 23.68723
DP-23	Drop Point	DP-23	31 3.29316	82 38.04565
DP-24	Drop Point	DP-24	31 2.32039	82 34.27047
DP-25	Drop Point	DP-25	31 4.91493	82 7.12543
DP-26	Drop Point	DP-26	31 41.82074	82 6.92974
DP-27	Drop Point	DP-27	31 7.31548	82 5.15871
DP-28	Drop Point	DP-28	31 6.26398	82 39.81175
DP-29	Drop Point	DP-29	31 3.75533	82 39.27216
DP-30	Drop Point	DP-30	31 1.86319	82 16.29162
DP-31	Drop Point	DP-31	30 35.94852	82 33.63322
DP-32	Drop Point	DP-32	30 34.79715	82 34.21358
DP-33	Drop Point	DP-33	30 34.08115	82 25.20924
DP-34	Drop Point	DP-34	30 32.56025	82 16.29162
DP-35	Drop Point	DP-35	30 40.70233	82 15.30961
DP-37	Drop Point	DP-37	30 50.94824	82 15.06342
DP-38	Drop Point	DP-38	30 51.46919	82 7.86281
DP-39	Drop Point	DP-39	30 48.85405	82 6.53136
DP-36	Drop Point	DP-36	30 36.46194	82 30.53136
Pogo HB	Helibase	Pogo HB	30 44.21802	82 32.70661
Golf Course	Helibase	Golf Course	30 41.42000	82 7.15982
Salter	Helibase	H-1	30 35.16033	82 7.19264
Edg	Helibase	H-2	30 32.85007	82 4.72663
Bl-E	Helibase	H-3	30 39.57093	82 1.16282
Mitch	Helibase	H-4	30 39.15758	82 39.73994
Bl-E	Helibase	H-5	30 37.49934	82 39.38713
Bl-E	Helibase	H-6	30 46.94328	82 33.68723
Bl-N	Helibase	H-7	30 49.49226	82 4.60862
Minnes	Helibase	H-8	30 53.38788	82 2.27744
Floyd	Helibase	H-9	30 51.62212	82 2.87396
Bl-E	Helibase	H-10	30 46.94328	82 33.68723
Bl-Mid	Helibase	H-11	30 45.21770	82 12.43378
Bl-Sth	Helibase	H-12	30 45.36415	82 17.80308
Bl-S	Helibase	H-13	30 47.41952	82 29.97132
Bl-E	Helibase	H-14	30 48.85405	82 16.29162
Bl-N	Helibase	H-15	30 38.57104	82 37.75457
Bl-E	Helibase	H-16	30 49.89720	82 39.97443
H-Betha	Helibase	H-17	30 30.95627	82 40.33793
Okeek West	Repeater	Okeek West	30 30.30033	82 16.29162
EDDY RPT	Repeater	EDDY RPT	30 33.55000	82 14.51287
Okeek East	Repeater	Okeek East	30 44.42533	82 11.35735
Okeek North	Repeater	Okeek North	31 7.10379	82 8.57809
NFC-2	Repeater	NFC-2	30 36.85073	82 23.81833



Legend

- Refuge Islands
- Uncontrolled Fire Edge
- Completed Line
- Aerial Hazard
- Dip Site
- Drop Point
- Fire Origin
- Helibase
- Unimproved Landing Area
- Helispot
- Incident Command Post
- Mobile Weather Unit
- Repeater
- Water Source
- Division Break
- Branch Break
- Shelters
- Bridges
- canoe_trails
- Management Action Point
- Swamps_Edge_Break
- Betha State Forest (FL)
- OsceolaNF (USFS)
- Wilderness_Bndry
- ONWR Bndry

