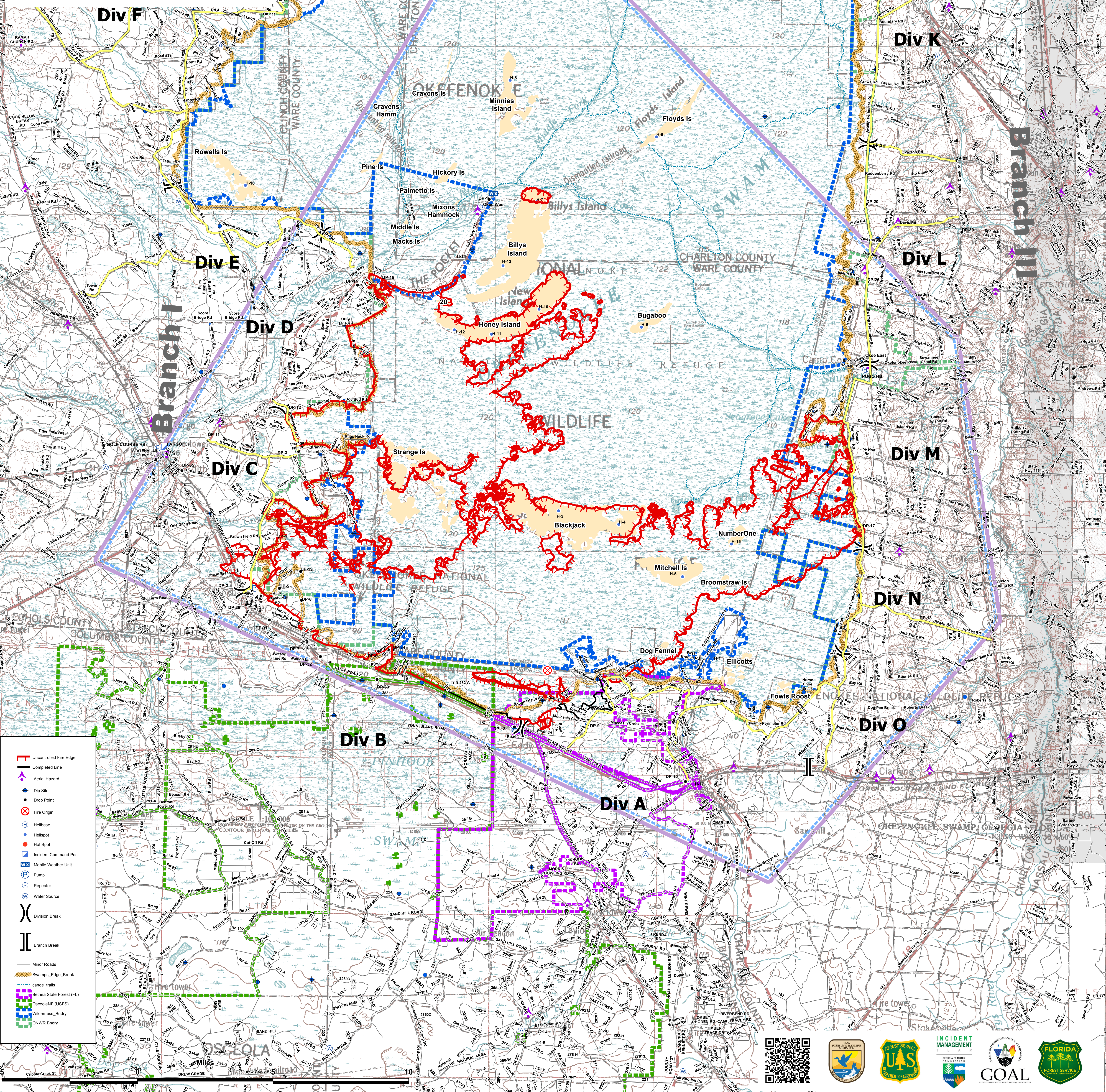


**West Mims Fire**  
**GA-OKR 017006**  
**04/29/2017**  
**AirOps Map**  
**94,664 acres, NAD83**  
**at 2119 04/28/2017**  
**GFC Type 2 Team**

Label	Latitude	Longitude
DP-1	30 52.62360	82 52.58000
DP-2	30 52.62073	82 52.58000
DP-3	30 42.25494	82 52.58000
DP-4	30 52.57102	82 52.58000
DP-5	30 50.96773	82 52.58000
DP-6	30 50.96773	82 52.58000
DP-7	30 50.96773	82 52.58000
DP-8	30 54.79718	82 52.58000
DP-9	30 53.96892	82 52.58000
DP-10	30 50.93104	82 52.58000
DP-11	30 42.69000	82 52.58000
DP-12	30 42.70000	82 52.58000
DP-13	30 52.53500	82 52.58000
DP-14	30 52.53500	82 52.58000
DP-15	30 46.96236	82 52.58000
DP-16	30 46.96236	82 52.58000
DP-17	30 50.96892	82 52.58000
DP-18	30 51.78133	82 52.58000
DP-19	30 52.53500	82 52.58000
DP-20	30 46.96236	82 52.58000
DP-21	31 43.93774	82 52.58000
DP-22	31 43.93774	82 52.58000
DP-23	31 52.98136	82 52.58000
DP-24	31 52.98136	82 52.58000
DP-25	31 49.94983	82 52.58000
DP-26	30 46.96236	82 52.58000
DP-27	30 46.96236	82 52.58000
DP-28	30 46.96236	82 52.58000
DP-29	31 43.93774	82 52.58000
DP-30	31 1.86238	82 52.58000
DP-31	30 50.96892	82 52.58000
DP-32	30 50.96892	82 52.58000
DP-33	30 50.96892	82 52.58000
DP-34	30 52.53500	82 52.58000
DP-35	30 40.70253	82 52.58000
DP-36	30 40.70253	82 52.58000
DP-37	30 40.70253	82 52.58000
DP-38	30 40.70253	82 52.58000
DP-39	30 40.70253	82 52.58000
DP-40	30 40.70253	82 52.58000
DP-41	30 44.21802	82 52.58000
DP-42	30 44.21802	82 52.58000
DP-43	30 44.21802	82 52.58000
DP-44	30 44.21802	82 52.58000
DP-45	30 44.21802	82 52.58000
DP-46	30 44.21802	82 52.58000
DP-47	30 44.21802	82 52.58000
DP-48	30 44.21802	82 52.58000
DP-49	30 44.21802	82 52.58000
DP-50	30 44.21802	82 52.58000
DP-51	30 44.21802	82 52.58000
DP-52	30 44.21802	82 52.58000
DP-53	30 44.21802	82 52.58000
DP-54	30 44.21802	82 52.58000
DP-55	30 44.21802	82 52.58000
DP-56	30 44.21802	82 52.58000
DP-57	30 44.21802	82 52.58000
DP-58	30 44.21802	82 52.58000
DP-59	30 44.21802	82 52.58000
DP-60	30 44.21802	82 52.58000
DP-61	30 44.21802	82 52.58000
DP-62	30 44.21802	82 52.58000
DP-63	30 44.21802	82 52.58000
DP-64	30 44.21802	82 52.58000
DP-65	30 44.21802	82 52.58000
DP-66	30 44.21802	82 52.58000
DP-67	30 44.21802	82 52.58000
DP-68	30 44.21802	82 52.58000
DP-69	30 44.21802	82 52.58000
DP-70	30 44.21802	82 52.58000
DP-71	30 44.21802	82 52.58000
DP-72	30 44.21802	82 52.58000
DP-73	30 44.21802	82 52.58000
DP-74	30 44.21802	82 52.58000
DP-75	30 44.21802	82 52.58000
DP-76	30 44.21802	82 52.58000
DP-77	30 44.21802	82 52.58000
DP-78	30 44.21802	82 52.58000
DP-79	30 44.21802	82 52.58000
DP-80	30 44.21802	82 52.58000
DP-81	30 44.21802	82 52.58000
DP-82	30 44.21802	82 52.58000
DP-83	30 44.21802	82 52.58000
DP-84	30 44.21802	82 52.58000
DP-85	30 44.21802	82 52.58000
DP-86	30 44.21802	82 52.58000
DP-87	30 44.21802	82 52.58000
DP-88	30 44.21802	82 52.58000
DP-89	30 44.21802	82 52.58000
DP-90	30 44.21802	82 52.58000
DP-91	30 44.21802	82 52.58000
DP-92	30 44.21802	82 52.58000
DP-93	30 44.21802	82 52.58000
DP-94	30 44.21802	82 52.58000
DP-95	30 44.21802	82 52.58000
DP-96	30 44.21802	82 52.58000
DP-97	30 44.21802	82 52.58000
DP-98	30 44.21802	82 52.58000
DP-99	30 44.21802	82 52.58000
DP-100	30 44.21802	82 52.58000



	Uncontrolled Fire Edge
	Completed Line
	Aerial Hazard
	Dp Site
	Drop Point
	Fire Origin
	Hot Spot
	Helibase
	Helispot
	Repeater
	Water Source
	Mobile Weather Unit
	Incident Command Post
	Pump
	Repeater
	Water Source
	Division Break
	Branch Break
	Minor Roads
	Swamps_Edge_Break
	canoe Stairs
	Beltas State Forest (FL)
	OscodanP (USFS)
	Wilderness_Bdry
	ONWR Bdry

