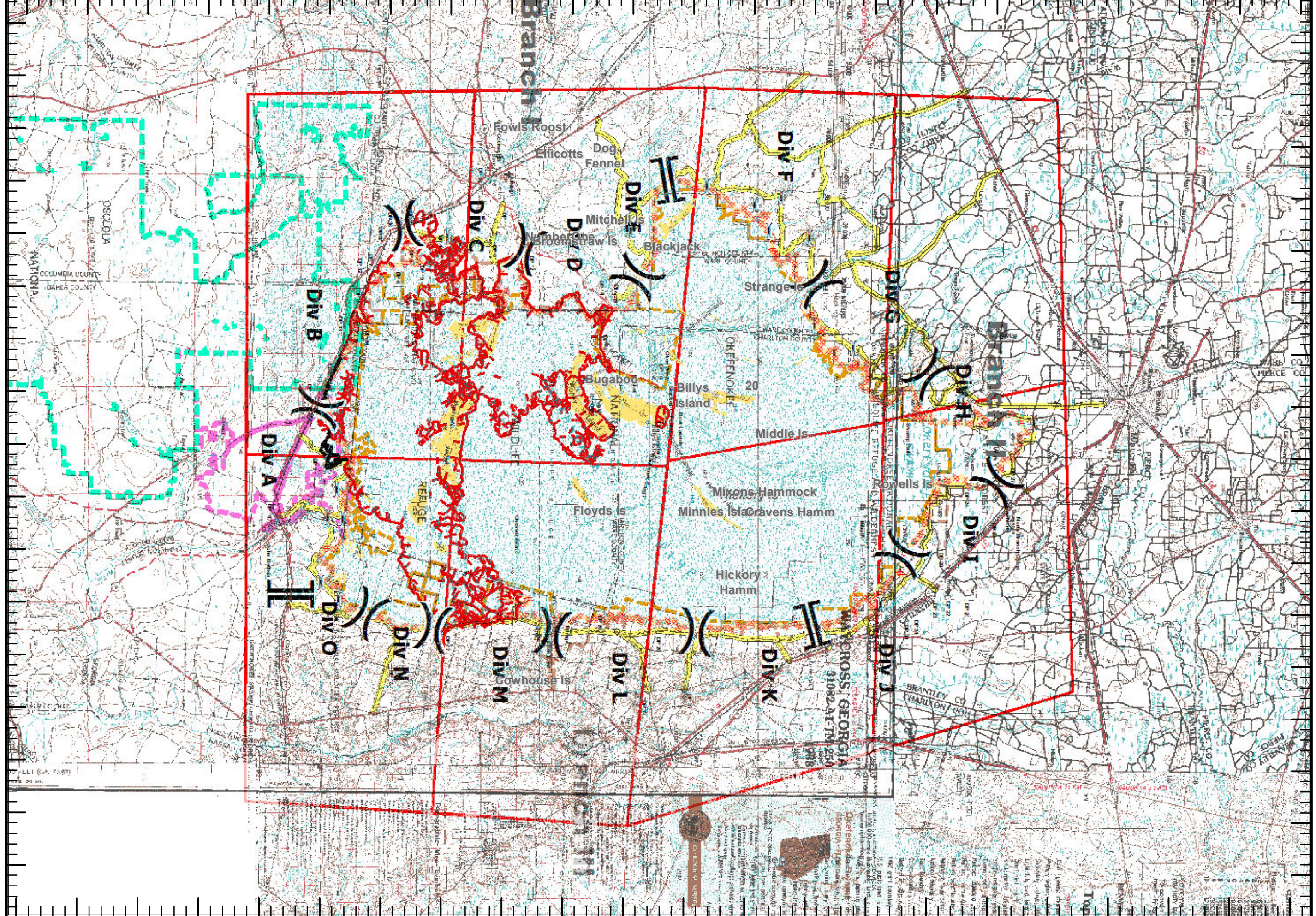
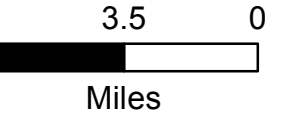


30°18'N 30°21'N 30°24'N 30°27'N 30°30'N 30°33'N 30°36'N 30°39'N 30°42'N 30°45'N 30°48'N 30°51'N 30°54'N 30°57'N 31°0'N 31°3'N 31°6'N 31°9'N 31°12'N 31°15'N 31°18'N 31°21'N

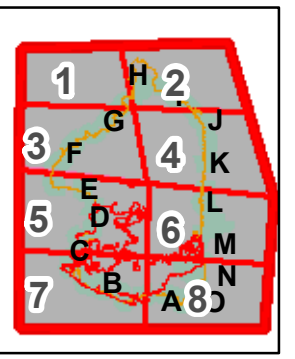
West Mims Fire
GA-OKR 017006
04/29/2017
94,664 ac.NAD1983
as of 04/28/2017 2119



- Aerial Hazard
- Dip Site
- Drop Point
- Fire Origin
- Helibase
- Helispot
- Hot Spot
- Incident Command Post
- Mobile Weather Unit
- Pump
- Repeater
- Water Source
- Division Break
- Branch Break
- Uncontrolled Fire Edge
- Completed Line
- bridges_NAD83
- Refuge Islands
- USFS
- John Bethea SF
- Wilderness
- ONWR Boundary
- Swamps Edge Break

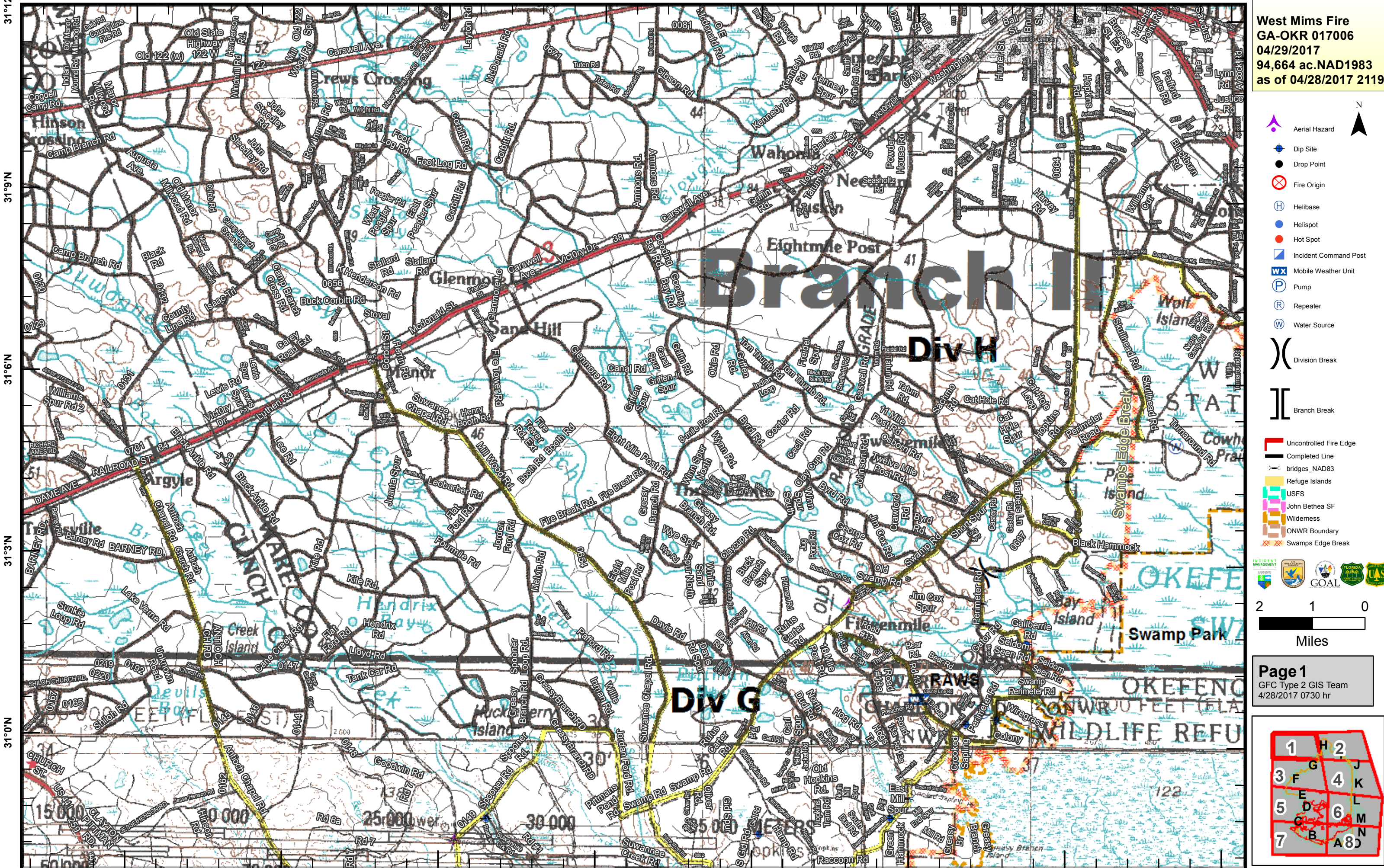


Page Overview
GFC Type 2 GIS Team
4/28/2017 0730 hr



81°54'W 81°57'W 82°0'W 82°3'W 82°6'W 82°9'W 82°12'W 82°15'W 82°18'W 82°21'W 82°24'W 82°27'W 82°30'W 82°33'W 82°36'W 82°39'W 82°42'W

82°39'W 82°36'W 82°33'W 82°30'W 82°27'W 82°24'W 82°21'W 82°18'W



31°12'N
31°9'N
31°6'N
31°3'N
31°0'N

West Mims Fire
GA-OKR 017006
04/29/2017
94,664 ac.NAD1983
as of 04/28/2017 2119

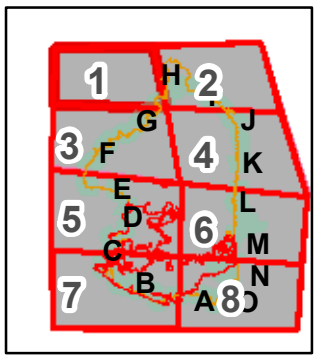
Legend

- Aerial Hazard
- Dip Site
- Drop Point
- Fire Origin
- Helibase
- Helispot
- Hot Spot
- Incident Command Post
- Mobile Weather Unit
- Pump
- Repeater
- Water Source
- Division Break
- Branch Break
- Uncontrolled Fire Edge
- Completed Line
- bridges_NAD83
- Refuge Islands
- USFS
- John Bethea SF
- Wilderness
- ONWR Boundary
- Swamps Edge Break

Scale

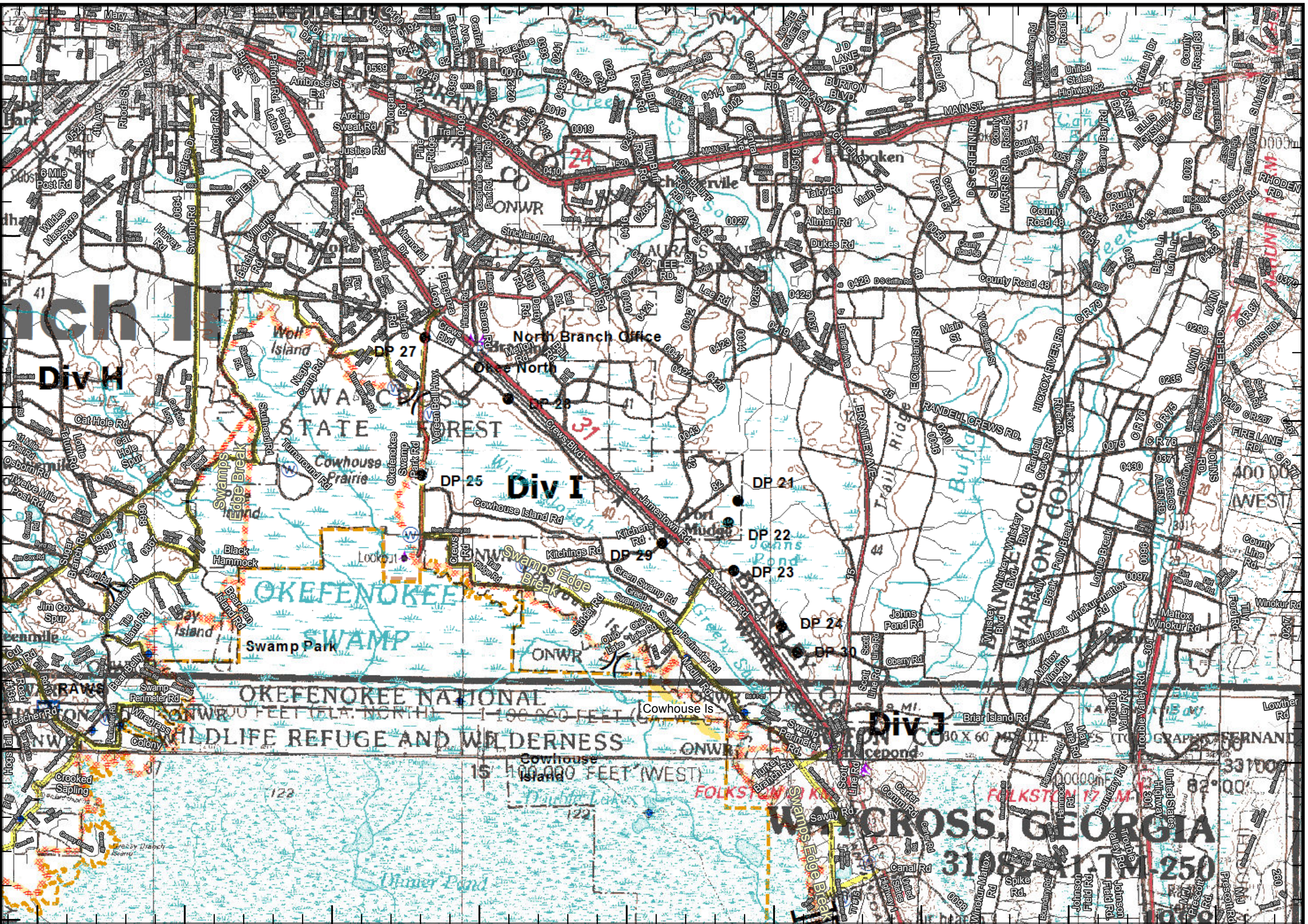
2 1 0
Miles

Page 1
GFC Type 2 GIS Team
4/28/2017 0730 hr



82°24'W 82°21'W 82°18'W 82°15'W 82°12'W 82°9'W 82°6'W 82°3'W 82°0'W

31°12'N 31°9'N 31°6'N 31°3'N 31°0'N

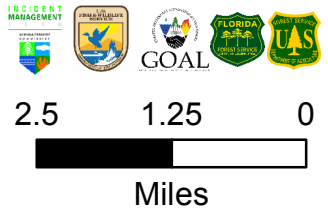


West Mims Fire
GA-OKR 017006
04/29/2017
94,664 ac.NAD1983
as of 04/28/2017 2119

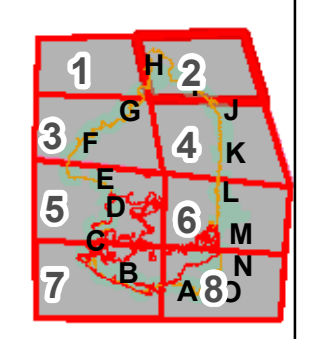
- Aerial Hazard
- Dip Site
- Drop Point
- Fire Origin
- Helibase
- Helispot
- Hot Spot
- Incident Command Post
- Mobile Weather Unit
- Pump
- Repeater
- Water Source

- Division Break
- Branch Break

- Uncontrolled Fire Edge
- Completed Line
- bridges_NAD83
- Refuge Islands
- USFS
- John Bethea SF
- Wilderness
- ONWR Boundary
- Swamps Edge Break

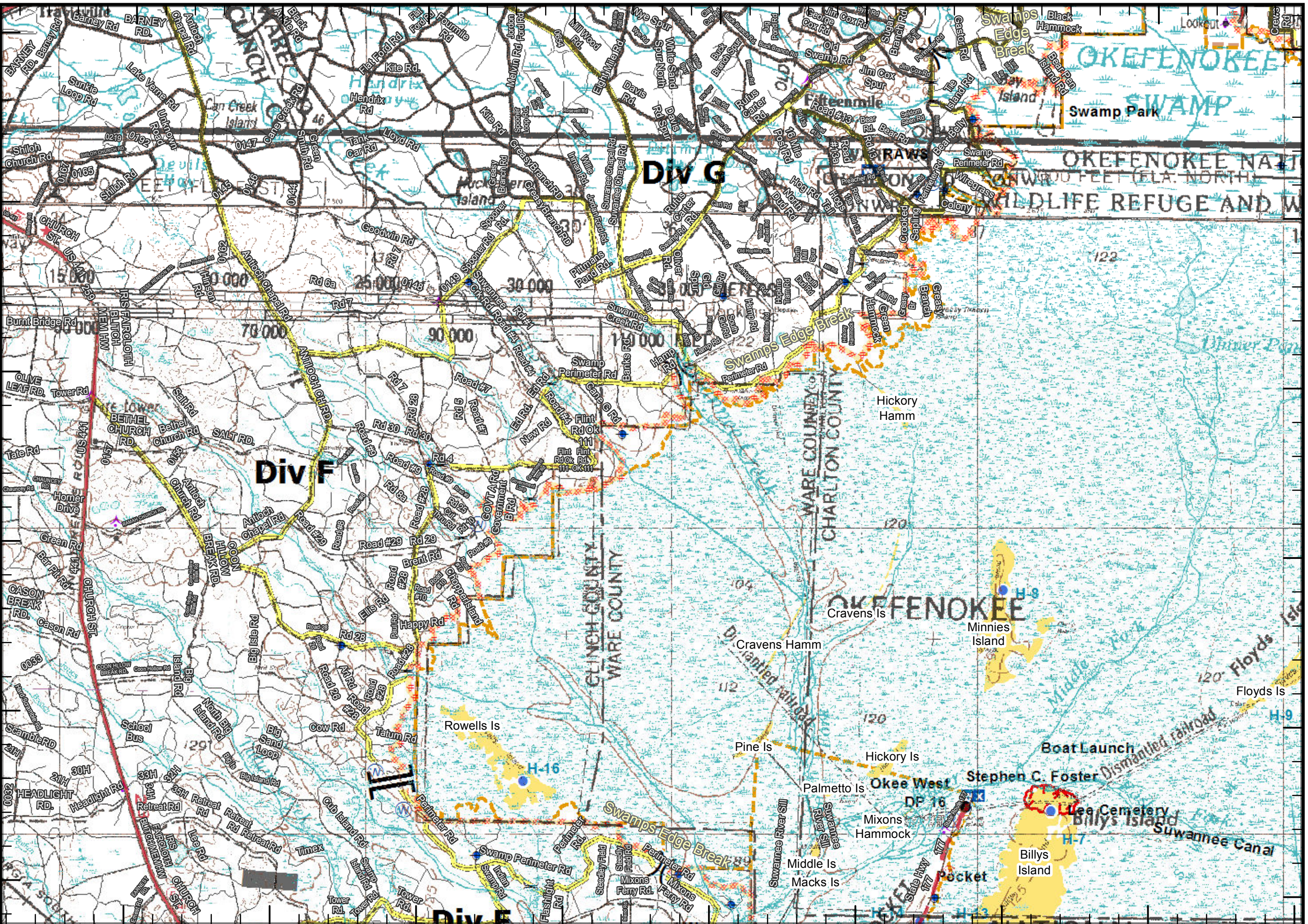


Page 2
GFC Type 2 GIS Team
4/28/2017 0730 hr



82°39'W 82°36'W 82°33'W 82°30'W 82°27'W 82°24'W 82°21'W 82°18'W

31°3'N 31°0'N 30°57'N 30°54'N 30°51'N 30°48'N



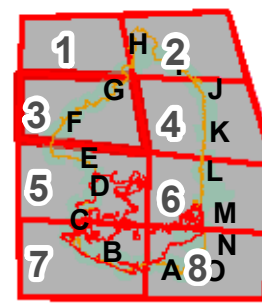
West Mims Fire
GA-OKR 017006
04/29/2017
94,664 ac.NAD1983
as of 04/28/2017 2119

- Aerial Hazard
- Dip Site
- Drop Point
- Fire Origin
- Helibase
- Helispot
- Hot Spot
- Incident Command Post
- Mobile Weather Unit
- Pump
- Repeater
- Water Source
- Division Break
- Branch Break

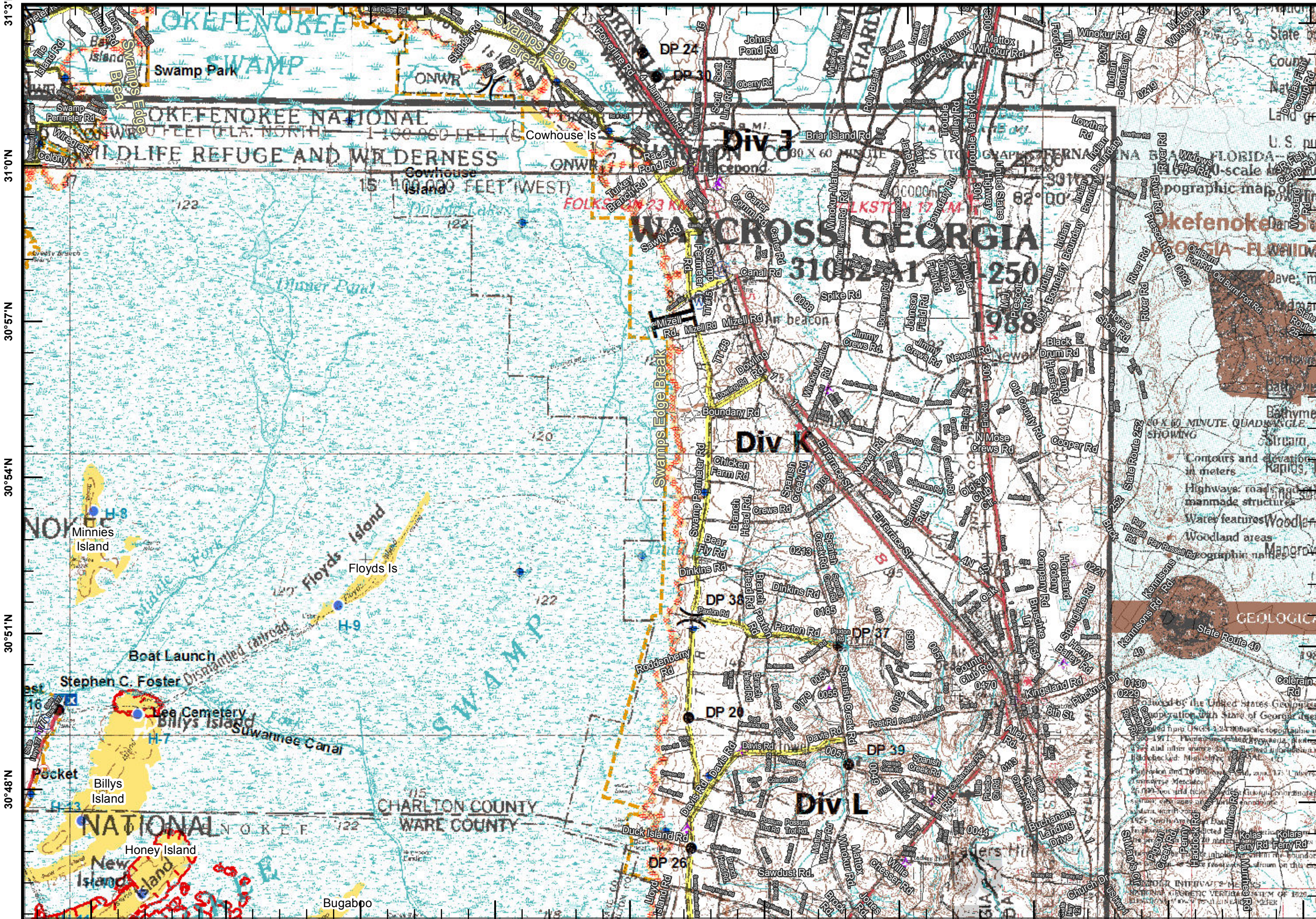
- Uncontrolled Fire Edge
- Completed Line
- bridges_NAD83
- Refuge Islands
- USFS
- John Bethea SF
- Wilderness
- ONWR Boundary
- Swamps Edge Break



Page 3
GFC Type 2 GIS Team
4/28/2017 0730 hr



82°21'W 82°18'W 82°15'W 82°12'W 82°9'W 82°6'W 82°3'W 82°0'W 81°57'W 81°54'W

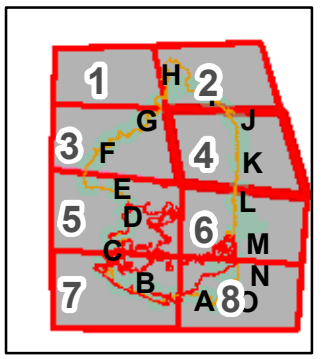


West Mims Fire
GA-OKR 017006
04/29/2017
94,664 ac.NAD1983
as of 04/28/2017 2119

- Aerial Hazard
- Dip Site
- Drop Point
- Fire Origin
- Helibase
- Helispot
- Hot Spot
- Incident Command Post
- Mobile Weather Unit
- Pump
- Repeater
- Water Source
- Division Break
- Branch Break
- Uncontrolled Fire Edge
- Completed Line
- bridges_NAD83
- Refuge Islands
- USFS
- John Bethea SF
- Wilderness
- ONWR Boundary
- Swamps Edge Break



Page 4
GFC Type 2 GIS Team
4/28/2017 0730 hr



82°39'W

82°36'W

82°33'W

82°30'W

82°27'W

82°24'W

82°21'W

82°18'W

82°15'W

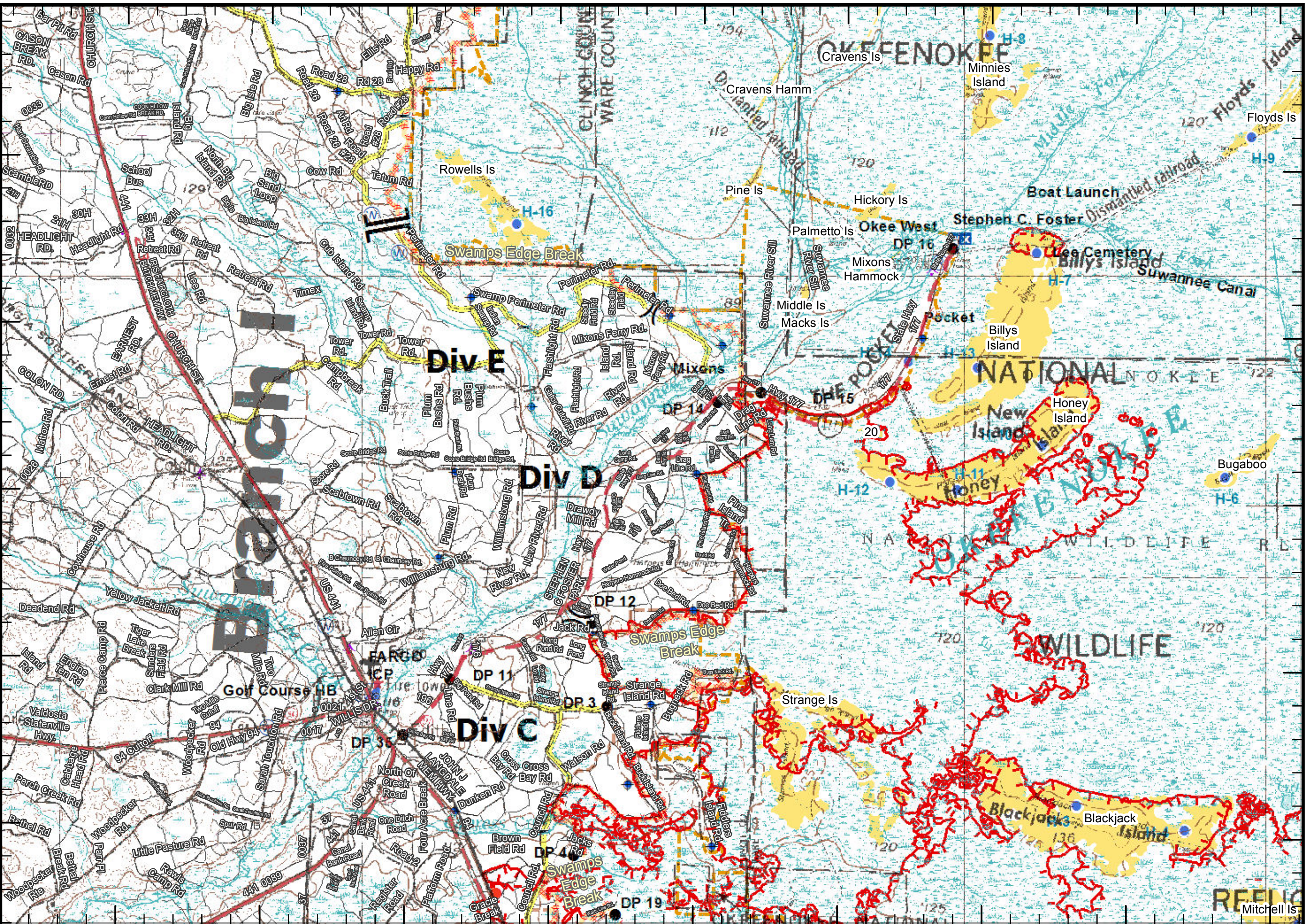
30°51'N

30°48'N

30°45'N

30°42'N

30°39'N



West Mims Fire
 GA-OKR 017006
 04/29/2017
 94,664 ac.NAD1983
 as of 04/28/2017 2119

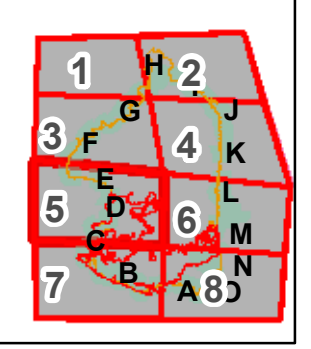
- Aerial Hazard
- Dip Site
- Drop Point
- Fire Origin
- Helibase
- Helispot
- Hot Spot
- Incident Command Post
- Mobile Weather Unit
- Pump
- Repeater
- Water Source

- Division Break
- Branch Break

- Uncontrolled Fire Edge
- Completed Line
- bridges_NAD83
- Refuge Islands
- USFS
- John Bethea SF
- Wilderness
- ONWR Boundary
- Swamps Edge Break

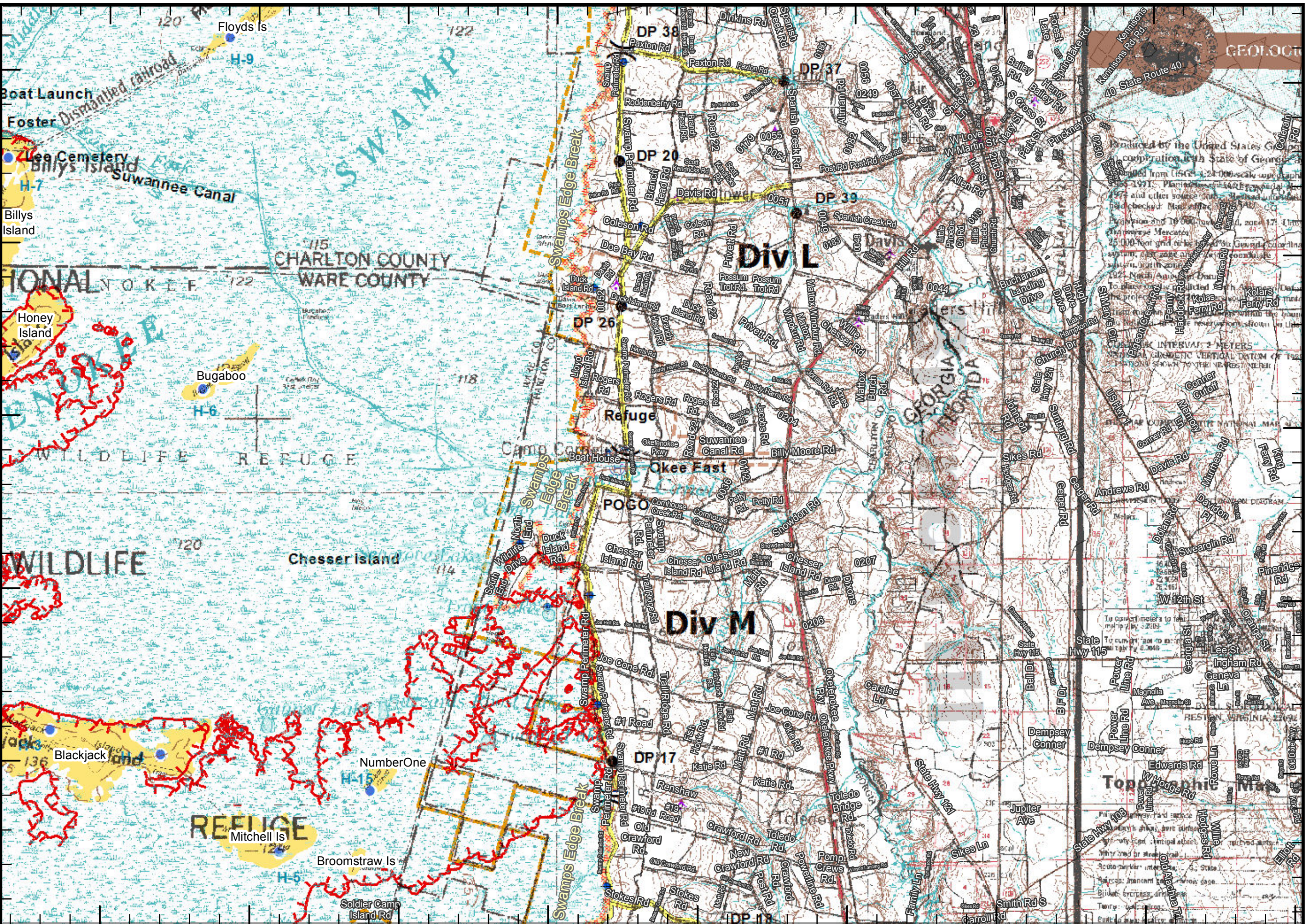


Page 5
 GFC Type 2 GIS Team
 4/28/2017 0730 hr



82°18'W 82°15'W 82°12'W 82°9'W 82°6'W 82°3'W 82°0'W 81°57'W

30°51'N 30°48'N 30°45'N 30°42'N 30°39'N

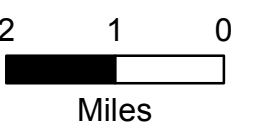


West Mims Fire
GA-OKR 017006
04/29/2017
94,664 ac.NAD1983
as of 04/28/2017 2119

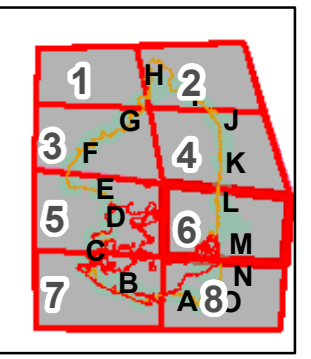
- Aerial Hazard
- Dip Site
- Drop Point
- Fire Origin
- Helibase
- Helispot
- Hot Spot
- Incident Command Post
- Mobile Weather Unit
- Pump
- Repeater
- Water Source

- Division Break
- Branch Break

- Uncontrolled Fire Edge
- Completed Line
- bridges_NAD83
- Refuge Islands
- USFS
- John Bethea SF
- Wilderness
- ONWR Boundary
- Swamps Edge Break

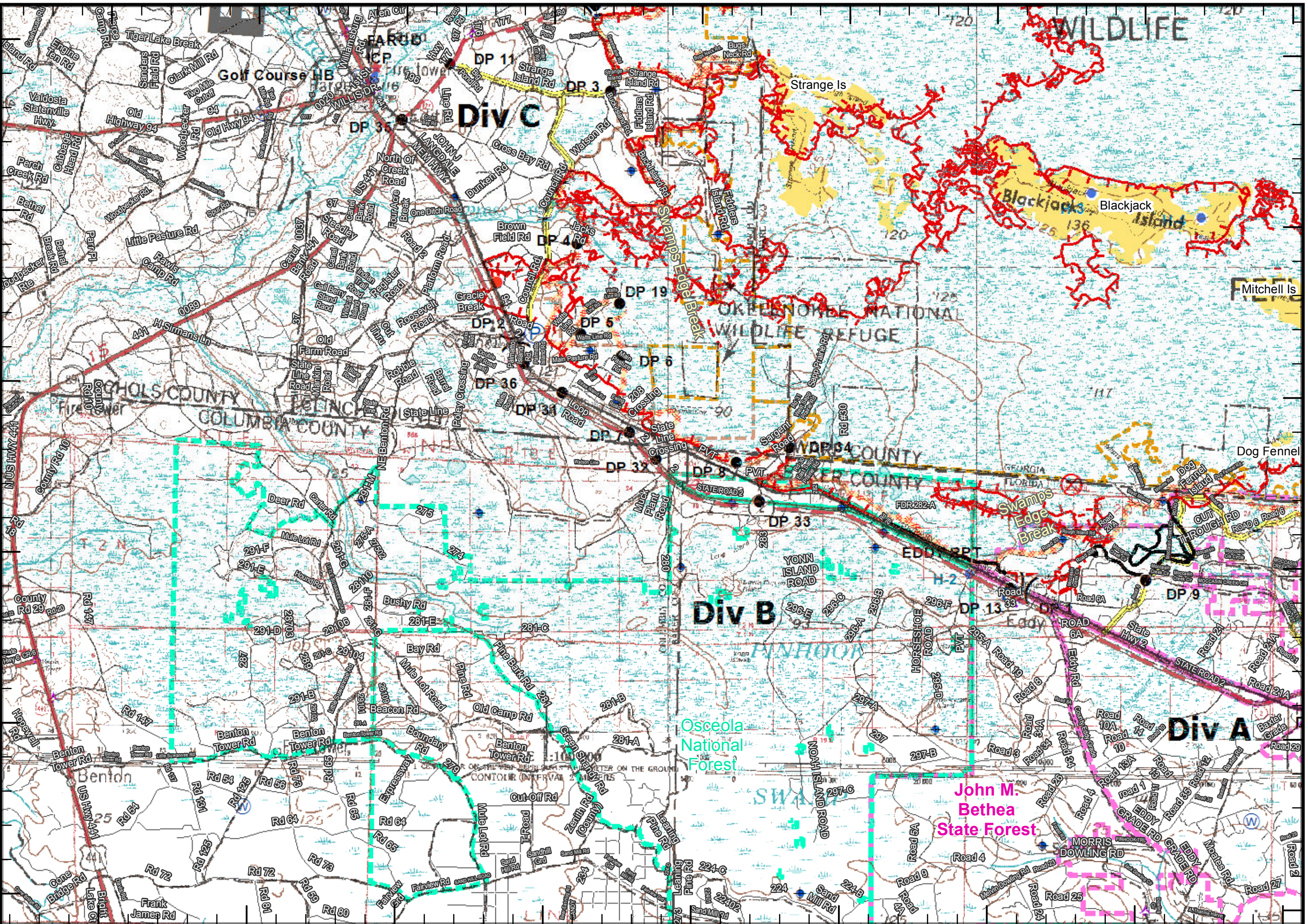


Page 6
GFC Type 2 GIS Team
4/28/2017 0730 hr



82°39'W 82°36'W 82°33'W 82°30'W 82°27'W 82°24'W 82°21'W 82°18'W 82°15'W

30°42'N 30°39'N 30°36'N 30°33'N 30°30'N 30°27'N



West Mims Fire
GA-OKR 017006
04/29/2017
94,664 ac.NAD1983
as of 04/28/2017 2119

- Aerial Hazard
- Dip Site
- Drop Point
- Fire Origin
- Helibase
- Helispot
- Hot Spot
- Incident Command Post
- Mobile Weather Unit
- Pump
- Repeater
- Water Source

- Division Break
- Branch Break

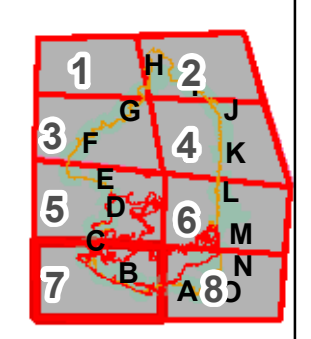
- Uncontrolled Fire Edge
- Completed Line
- bridges_NAD83
- Refuge Islands
- USFS
- John Bethea SF
- Wilderness
- ONWR Boundary
- Swamps Edge Break

INCIDENT MANAGEMENT

2.5 1.25 0

Miles

Page 7
GFC Type 2 GIS Team
4/28/2017 0730 hr



82°18'W

82°15'W

82°12'W

82°9'W

82°6'W

82°3'W

82°0'W

81°57'W

30°42'N

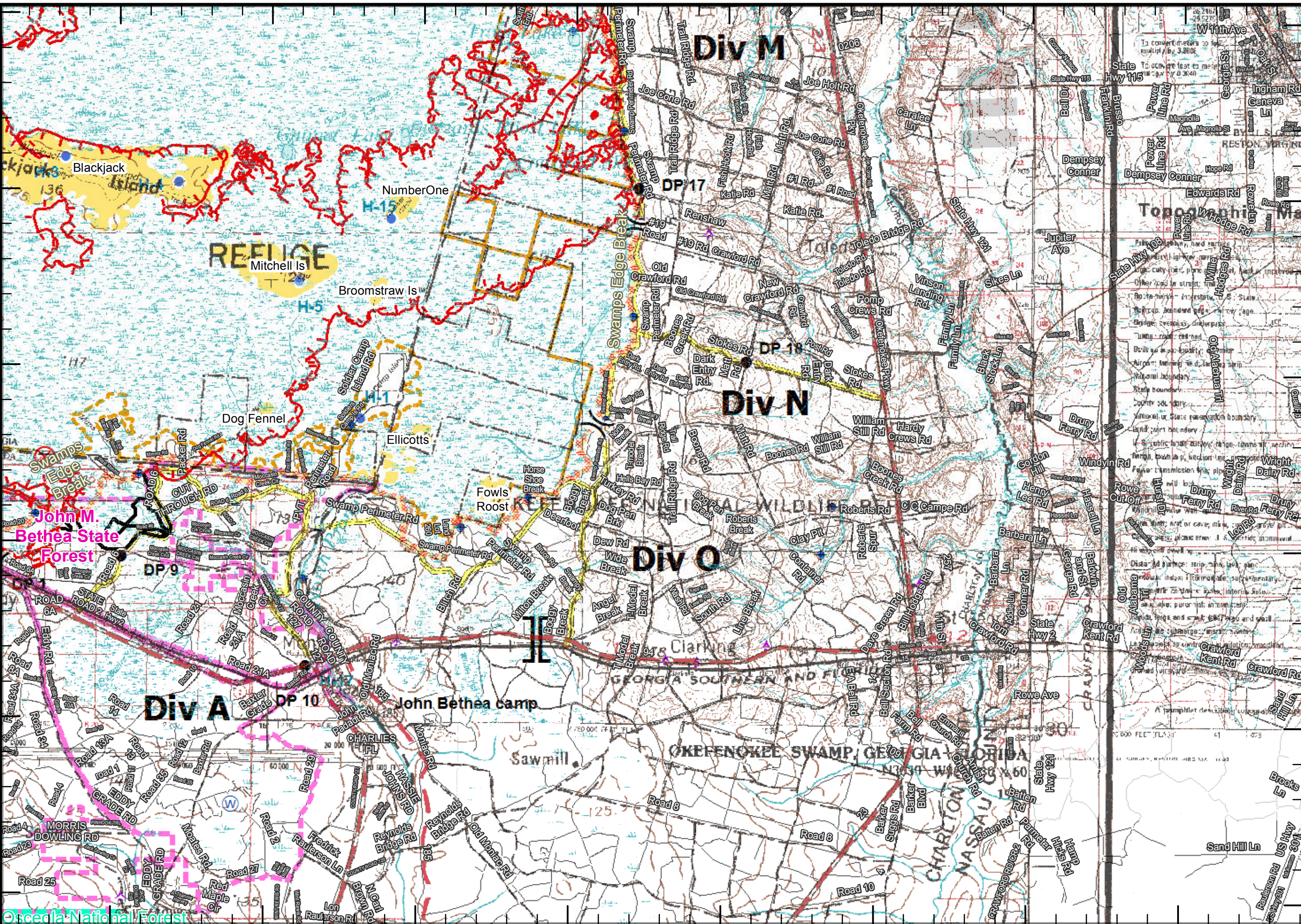
30°39'N

30°36'N

30°33'N

30°30'N

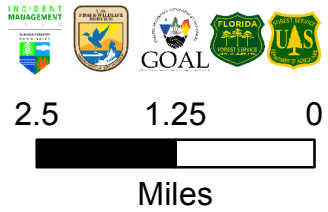
30°27'N



West Mims Fire
 GA-OKR 017006
 04/29/2017
 94,664 ac.NAD1983
 as of 04/28/2017 2119

- Aerial Hazard
- Dip Site
- Drop Point
- Fire Origin
- Helibase
- Helispot
- Hot Spot
- Incident Command Post
- Mobile Weather Unit
- Pump
- Repeater
- Water Source
- Division Break
- Branch Break

- Uncontrolled Fire Edge
- Completed Line
- bridges_NAD83
- Refuge Islands
- USFS
- John Bethea SF
- Wilderness
- ONWR Boundary
- Swamps Edge Break



Page 8
 GFC Type 2 GIS Team
 4/28/2017 0730 hr

