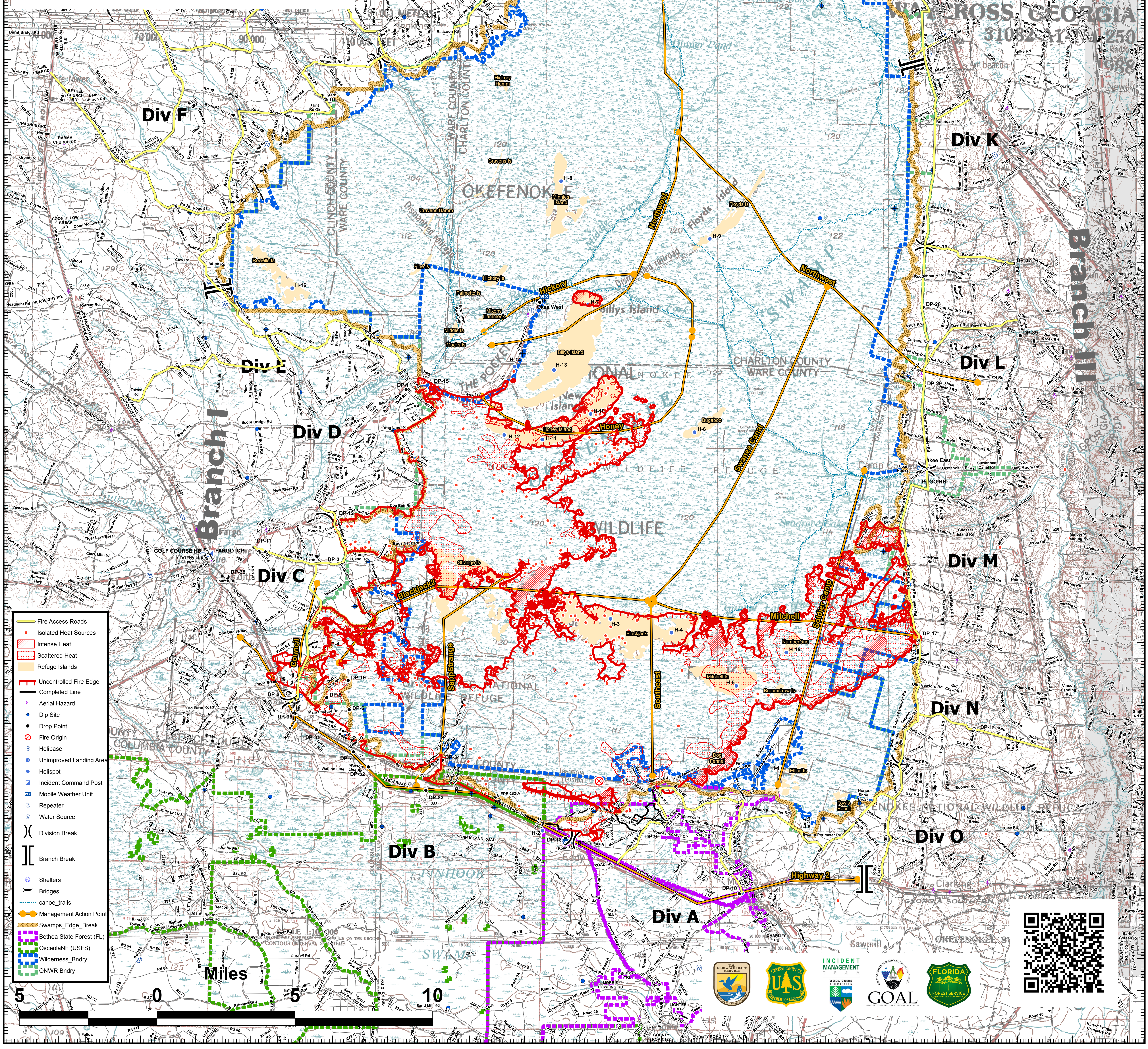


West Mims Fire
GA-OKR 017006
04/29/2017
Ops Map
IR as of 4/28/17, 2119
94,664 acres, NAD1983
GFC Type 2 Team

West Mims Incident Data Points	Label	Latitude West	Longitude North
DP-1	Drop Point	30 35.63160	82 27.54000
DP-2	Drop Point	30 36.85073	82 17.85822
DP-3	Drop Point	30 41.25494	82 32.10600
DP-4	Drop Point	30 36.57192	82 29.17100
DP-5	Drop Point	30 36.98778	82 29.27833
DP-6	Drop Point	30 36.59123	82 5.58167
DP-7	Drop Point	30 35.26622	82 15.10416
DP-8	Drop Point	30 34.75918	82 25.59737
DP-9	Drop Point	30 37.88559	82 29.27833
DP-10	Drop Point	30 30.92574	82 14.21382
DP-11	Drop Point	30 41.69900	82 5.15418
DP-12	Drop Point	30 42.75500	82 22.18801
DP-13	Drop Point	30 38.55800	82 29.27833
DP-14	Drop Point	30 46.74324	82 26.60088
DP-15	Drop Point	30 46.93236	82 25.68432
DP-16	Drop Point	30 46.93236	82 25.68432
DP-17	Drop Point	30 38.20855	82 7.72610
DP-18	Drop Point	30 36.17833	82 16.60115
DP-19	Drop Point	30 37.52281	82 20.47050
DP-20	Drop Point	30 49.53562	82 19.94815
DP-21	Drop Point	31 4.57174	82 24.85484
DP-22	Drop Point	31 4.13184	82 23.68723
DP-23	Drop Point	31 3.29316	82 38.04565
DP-24	Drop Point	31 2.32039	82 34.27047
DP-25	Drop Point	31 4.91489	82 7.12543
DP-26	Drop Point	30 38.20855	82 29.27833
DP-27	Drop Point	31 7.31548	82 5.15871
DP-28	Drop Point	31 6.26388	82 39.81175
DP-29	Drop Point	31 3.75533	82 29.27216
DP-30	Drop Point	31 1.43184	82 19.02463
DP-31	Drop Point	30 35.94852	82 33.63322
DP-32	Drop Point	30 34.79175	82 34.21358
DP-33	Drop Point	30 34.08115	82 29.20424
DP-34	Drop Point	30 34.08115	82 29.20424
DP-35	Drop Point	30 40.70233	82 15.30961
DP-37	Drop Point	30 50.94824	82 15.06342
DP-38	Drop Point	30 51.46919	82 7.86281
DP-39	Drop Point	30 48.46700	82 6.51316
DP-36	Drop Point	30 36.46194	82 30.53136
Pogo Hb	Helibase	30 44.21802	82 33.70661
Golf Course	Helibase	30 41.42000	82 7.15982
H-1	Helispot	30 35.16033	82 7.19264
H-2	Helispot	30 32.85073	82 4.72663
H-3	Helispot	30 39.57093	82 1.16282
H-4	Helispot	30 39.15758	82 59.37394
H-5	Helispot	30 37.49934	82 59.38713
H-6	Helispot	30 48.64384	82 6.64871
H-7	Helispot	30 49.49226	82 4.60862
H-8	Helispot	30 53.38788	82 2.27744
H-9	Helispot	30 51.62212	82 2.87396
H-10	Helispot	30 46.04384	82 1.54615
H-11	Helispot	30 45.21770	82 12.43378
H-12	Helispot	30 45.34615	82 17.80308
H-13	Helispot	30 47.41952	82 29.97132
H-14	Helispot	30 48.50784	82 18.04825
H-15	Helispot	30 38.57104	82 37.75457
H-16	Helispot	30 49.89720	82 39.97443
H-17	Helispot	30 30.95627	82 40.35793
Repeater	Repeater	30 30.30733	82 18.22532
EDDY RPT	Repeater	30 33.55000	82 14.51287
Oke East	Repeater	30 44.42533	82 11.35735
Oke North	Repeater	31 7.10379	82 8.57809
NFC-2	Repeater	30 36.85073	82 23.81333



- Fire Access Roads
- Isolated Heat Sources
- Intense Heat
- ▨ Scattered Heat
- Refuge Islands
- Uncontrolled Fire Edge
- Completed Line
- Aerial Hazard
- Dip Site
- Drop Point
- Fire Origin
- Helibase
- Unimproved Landing Area
- Helispot
- Incident Command Post
- Mobile Weather Unit
- Repeater
- Water Source
- Division Break
- Branch Break
- Shelters
- Bridges
- canoe_trails
- Management Action Point
- Swamps_Edge_Break
- Bethea State Forest (FL)
- OsceolaNF (USFS)
- Wilderness_Bndry
- ONWR Bndry

