

82°35'W 82°30'W 82°25'W 82°20'W 82°15'W 82°10'W 82°5'W 82°0'W

31°5'N 31°0'N 30°55'N 30°50'N 30°45'N 30°40'N 30°35'N 30°30'N 30°25'N

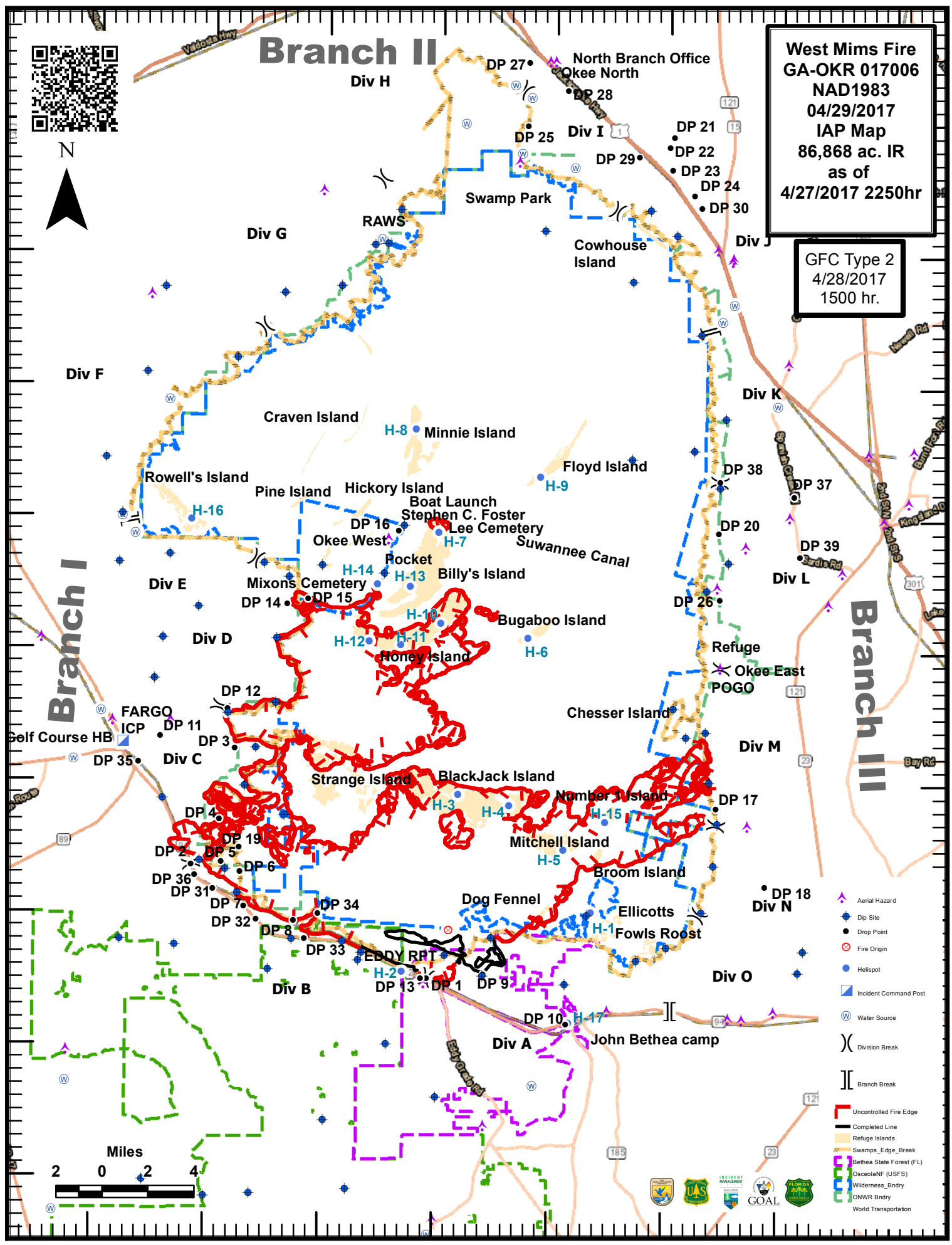
31°5'N 31°0'N 30°55'N 30°50'N 30°45'N 30°40'N 30°35'N 30°30'N 30°25'N



Branch II

West Mims Fire
 GA-OKR 017006
 NAD1983
 04/29/2017
 IAP Map
 86,868 ac. IR
 as of
 4/27/2017 2250hr

GFC Type 2
 4/28/2017
 1500 hr.



Branch III

Branch I



- Aerial Hazard
- Dip Site
- Drop Point
- Fire Origin
- Helispot
- Incident Command Post
- Water Source
- Division Break
- Branch Break
- Uncontrolled Fire Edge
- Completed Line
- Refuge Islands
- Swamps_Edge_Break
- Bethea State Forest (FL)
- OsceolaNF (USFS)
- Wilderness_Bndry
- ONWR Bndry
- World Transportation

