

82°35'W 82°30'W 82°25'W 82°20'W 82°15'W 82°10'W 82°5'W 82°0'W

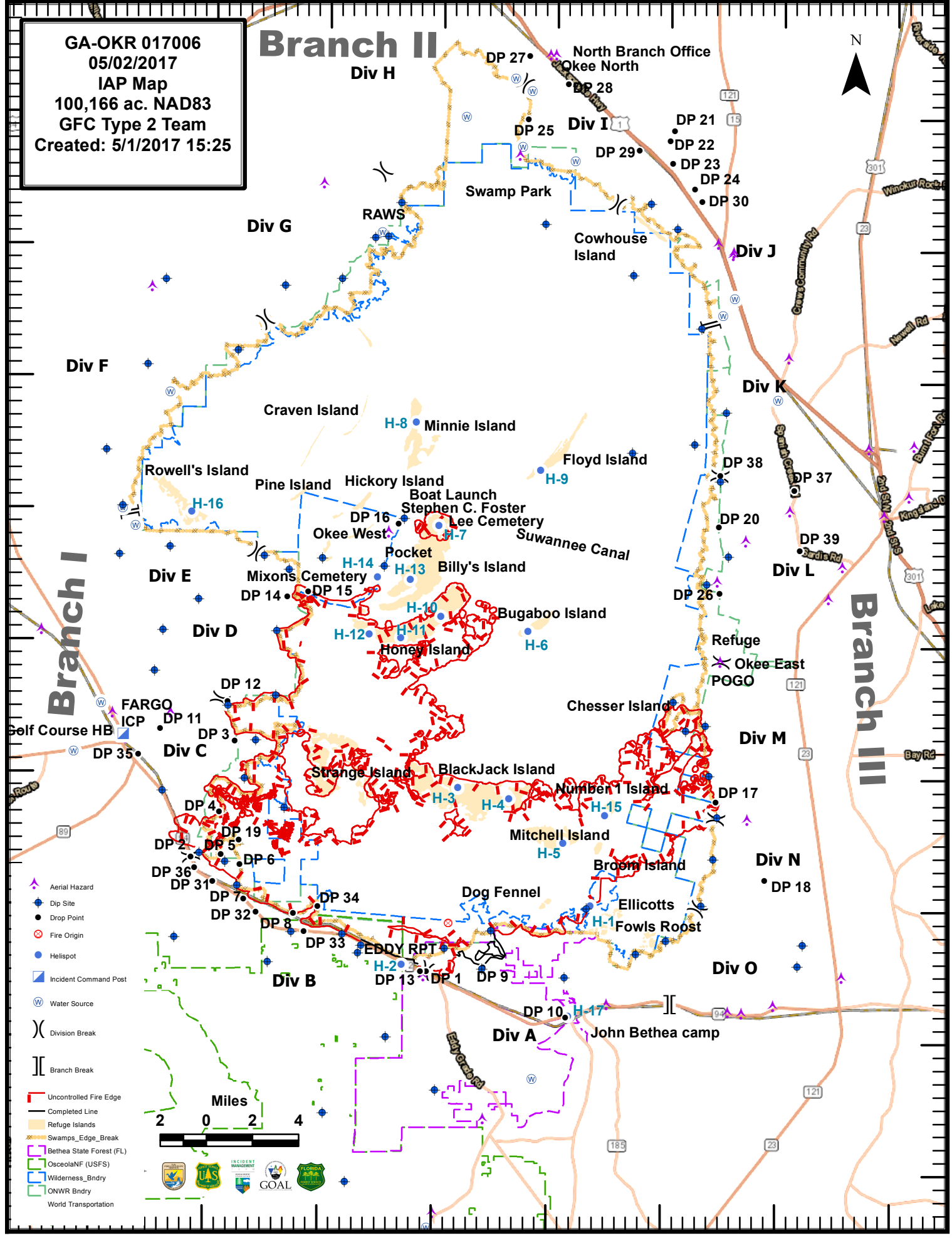
GA-OKR 017006
05/02/2017
IAP Map
100,166 ac. NAD83
GFC Type 2 Team
Created: 5/1/2017 15:25

Branch II



31°5'N
31°0'N
30°55'N
30°50'N
30°45'N
30°40'N
30°35'N
30°30'N
30°25'N

31°5'N
31°0'N
30°55'N
30°50'N
30°45'N
30°40'N
30°35'N
30°30'N
30°25'N



Branch I

Branch III



82°35'W 82°30'W 82°25'W 82°20'W 82°15'W 82°10'W 82°5'W 82°0'W