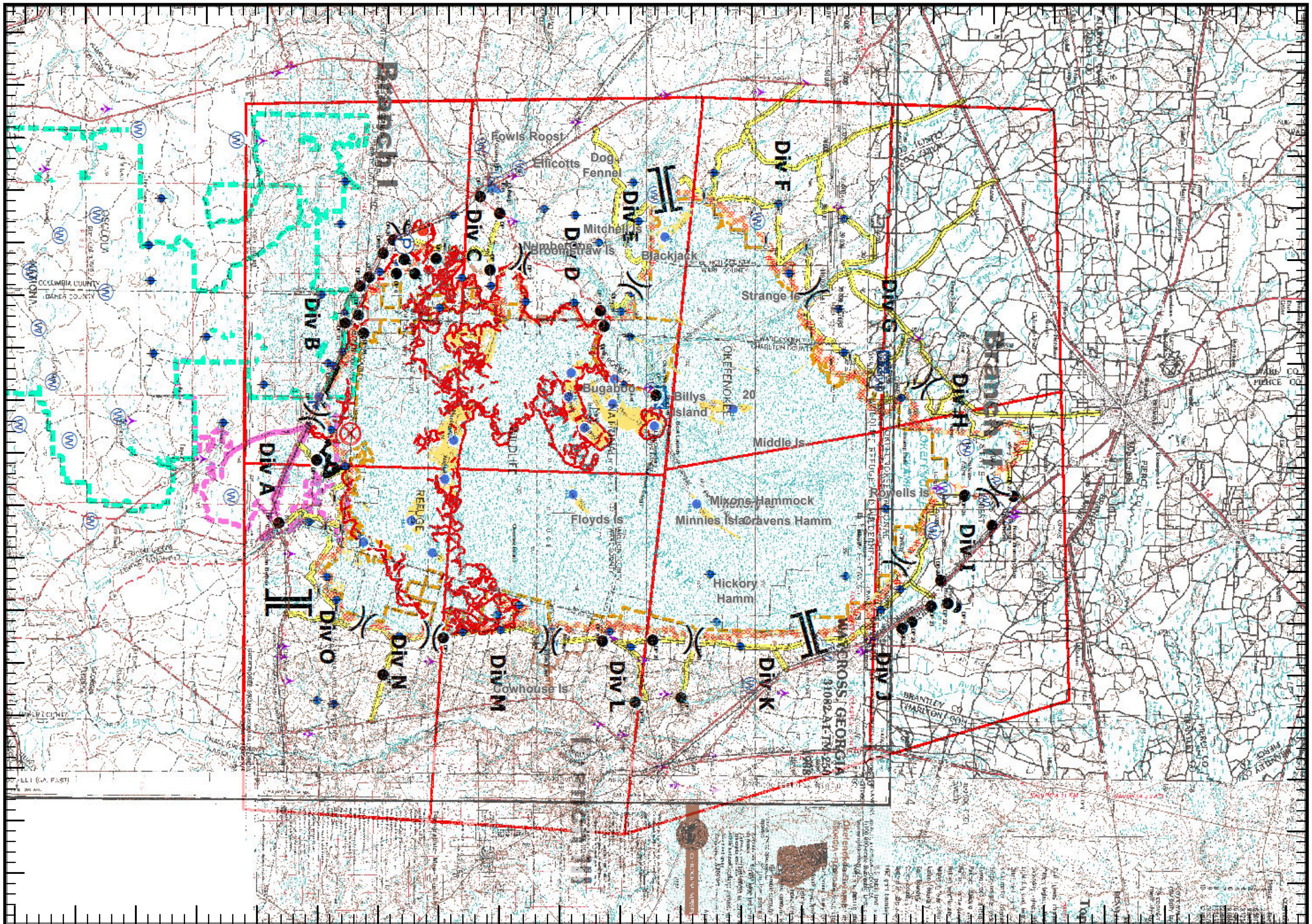
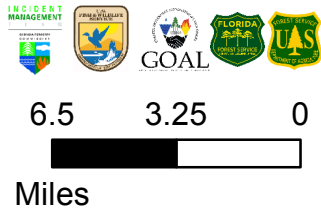


30°18'N 30°21'N 30°24'N 30°27'N 30°30'N 30°33'N 30°36'N 30°39'N 30°42'N 30°45'N 30°48'N 30°51'N 30°54'N 30°57'N 31°0'N 31°3'N 31°6'N 31°9'N 31°12'N 31°15'N 31°18'N 31°21'N

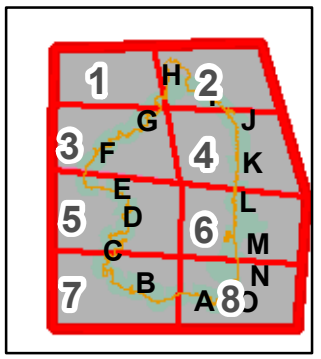
**West Mims Fire**  
GA-OKR 017006  
5/2/2017  
100,517ac.NAD1983  
@ 5/1/2017 2328 hr



- Aerial Hazard
- Dip Site
- Drop Point
- Fire Origin
- Helibase
- Helispot
- Hot Spot
- Incident Command Post
- Mobile Weather Unit
- Pump
- Repeater
- Water Source
- Division Break
- Branch Break
- Fire Access Roads
- Uncontrolled Fire Edge
- Completed Line
- bridges\_NAD83
- Refuge Islands
- USFS
- John Bethea SF
- Wilderness
- ONWR Boundary
- Swamps Edge Break

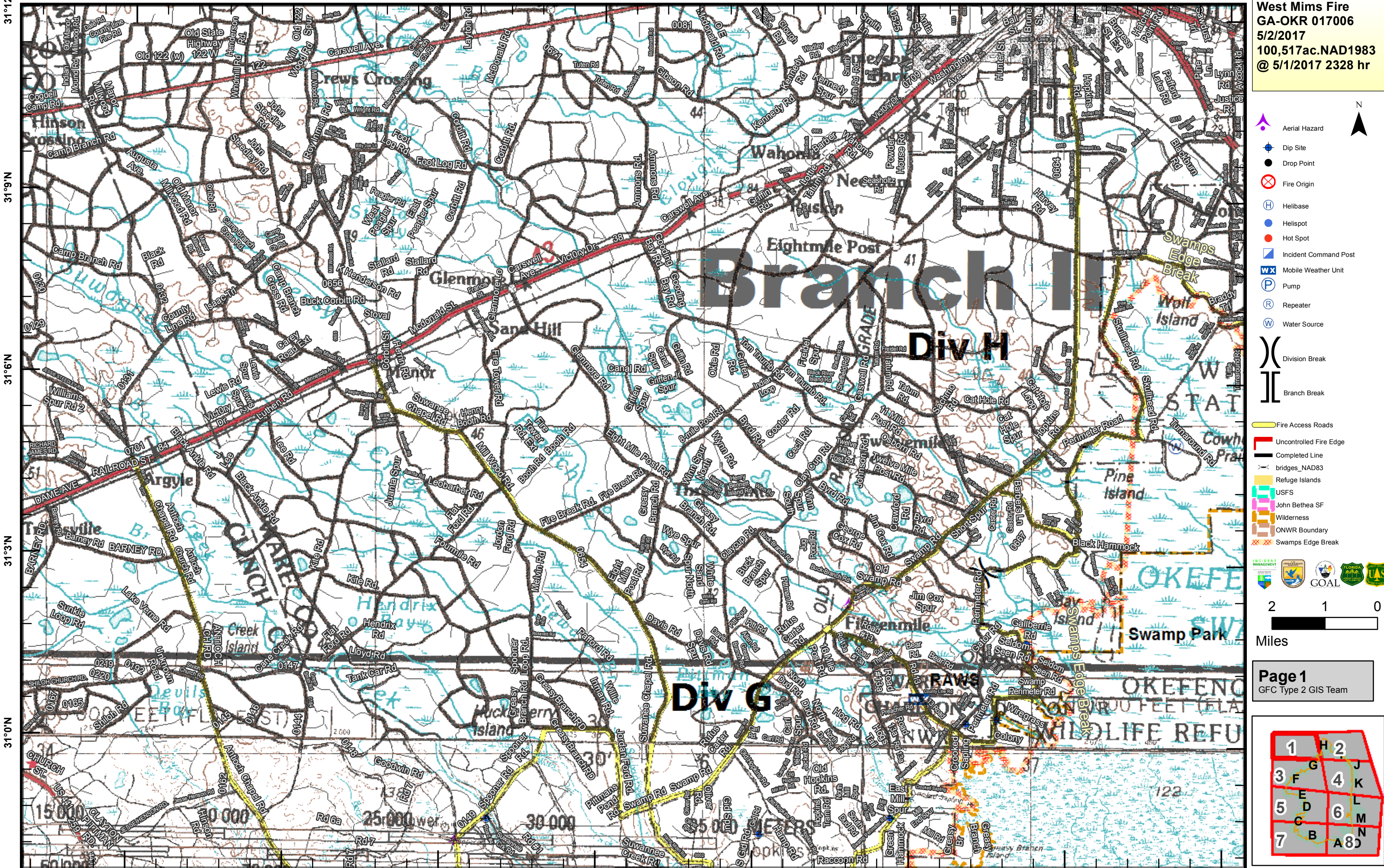


**Page Overview**  
GFC Type 2 GIS Team



81°54'W 81°57'W 82°0'W 82°3'W 82°6'W 82°9'W 82°12'W 82°15'W 82°18'W 82°21'W 82°24'W 82°27'W 82°30'W 82°33'W 82°36'W 82°39'W 82°42'W

82°39'W 82°36'W 82°33'W 82°30'W 82°27'W 82°24'W 82°21'W 82°18'W



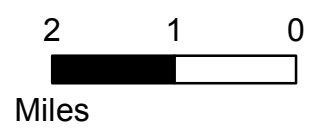
31°12'N  
31°9'N  
31°6'N  
31°3'N  
31°0'N

West Mims Fire  
GA-OKR 017006  
5/2/2017  
100,517ac.NAD1983  
@ 5/1/2017 2328 hr

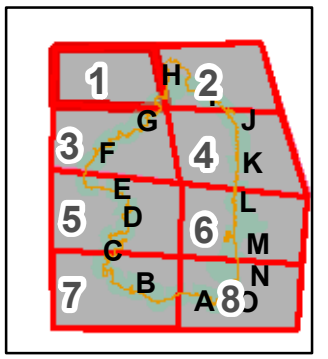
- Aerial Hazard
- Dip Site
- Drop Point
- Fire Origin
- Helibase
- Helispot
- Hot Spot
- Incident Command Post
- Mobile Weather Unit
- Pump
- Repeater
- Water Source
- Division Break
- Branch Break



- Fire Access Roads
- Uncontrolled Fire Edge
- Completed Line
- bridges\_NAD83
- Refuge Islands
- USFS
- John Bethea SF
- Wilderness
- ONWR Boundary
- Swamps Edge Break

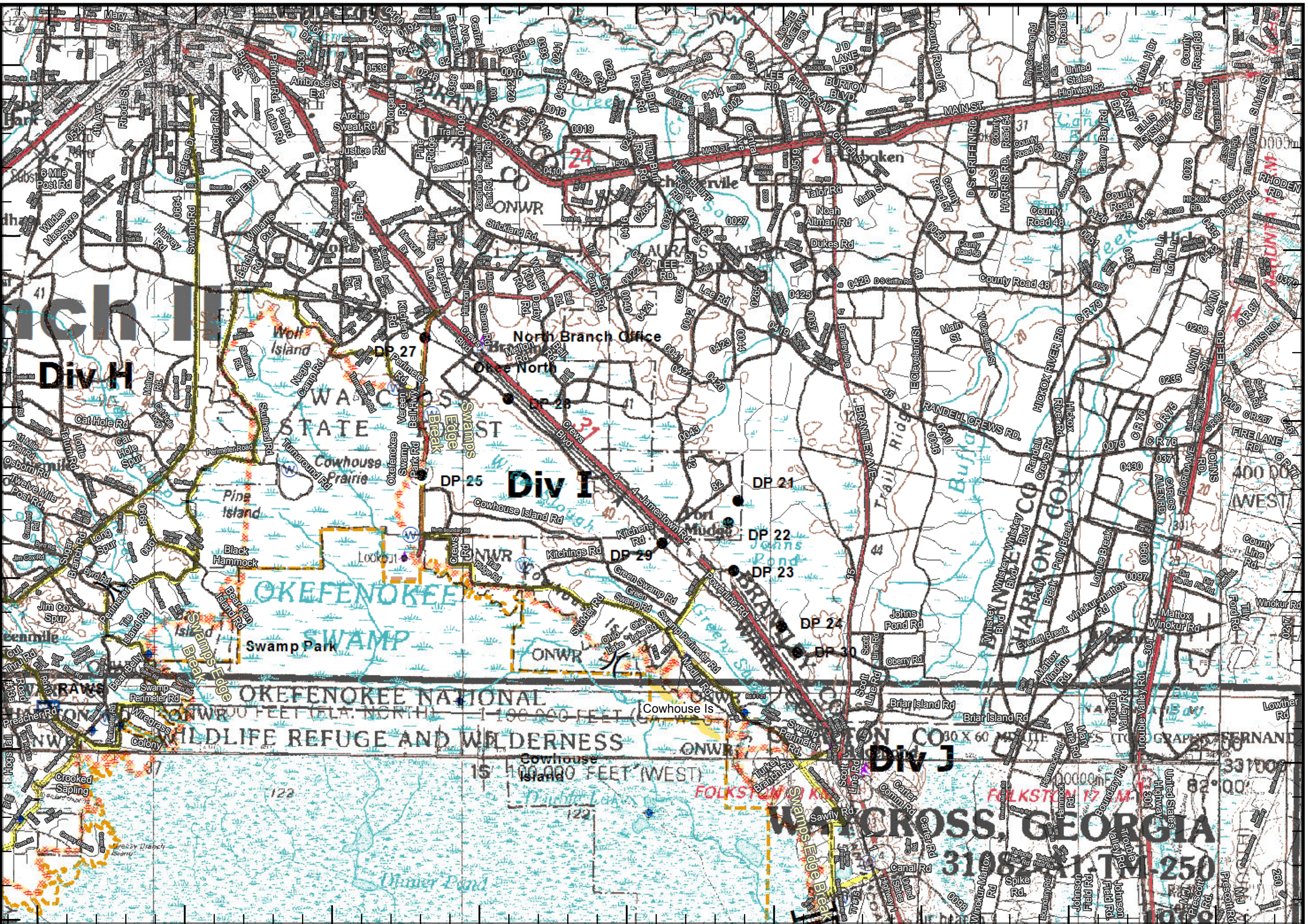


Page 1  
GFC Type 2 GIS Team



82°24'W 82°21'W 82°18'W 82°15'W 82°12'W 82°9'W 82°6'W 82°3'W 82°0'W

31°12'N 31°9'N 31°6'N 31°3'N 31°0'N



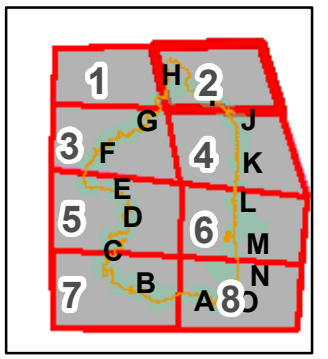
West Mims Fire  
GA-OKR 017006  
5/2/2017  
100,517ac.NAD1983  
@ 5/1/2017 2328 hr

- Aerial Hazard
- Dip Site
- Drop Point
- Fire Origin
- Helibase
- Helispot
- Hot Spot
- Incident Command Post
- Mobile Weather Unit
- Pump
- Repeater
- Water Source
- Division Break
- Branch Break

- Fire Access Roads
- Uncontrolled Fire Edge
- Completed Line
- bridges\_NAD83
- Refuge Islands
- USFS
- John Bethea SF
- Wilderness
- ONWR Boundary
- Swamps Edge Break



Page 2  
GFC Type 2 GIS Team



82°39'W

82°36'W

82°33'W

82°30'W

82°27'W

82°24'W

82°21'W

82°18'W

31°3'N

31°0'N

30°57'N

30°54'N

30°51'N

30°48'N

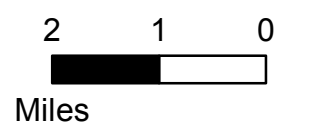


**West Mims Fire**  
 GA-OKR 017006  
 5/2/2017  
 100,517ac.NAD1983  
 @ 5/1/2017 2328 hr

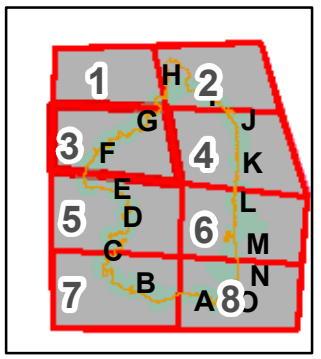
- Aerial Hazard
- Dip Site
- Drop Point
- Fire Origin
- Helibase
- Helispot
- Hot Spot
- Incident Command Post
- Mobile Weather Unit
- Pump
- Repeater
- Water Source

- Division Break
- Branch Break

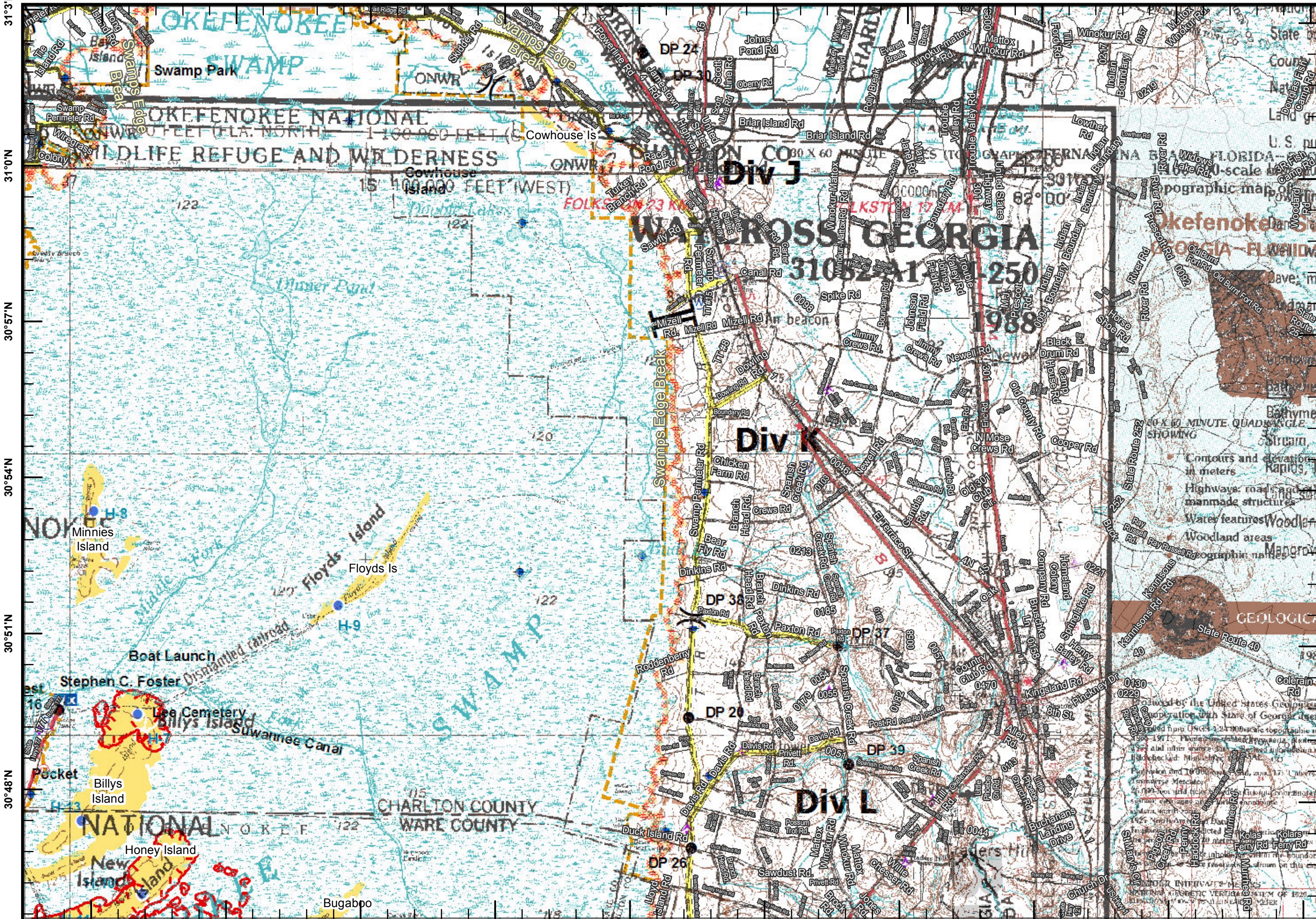
- Fire Access Roads
- Uncontrolled Fire Edge
- Completed Line
- bridges\_NAD83
- Refuge Islands
- USFS
- John Bethea SF
- Wilderness
- ONWR Boundary
- Swamps Edge Break



**Page 3**  
 GFC Type 2 GIS Team



82°21'W 82°18'W 82°15'W 82°12'W 82°9'W 82°6'W 82°3'W 82°0'W 81°57'W 81°54'W

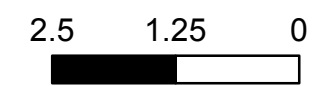


**West Mims Fire**  
GA-OKR 017006  
5/2/2017  
100,517ac.NAD1983  
@ 5/1/2017 2328 hr

- Aerial Hazard
- Dip Site
- Drop Point
- Fire Origin
- Helibase
- Helispot
- Hot Spot
- Incident Command Post
- Mobile Weather Unit
- Pump
- Repeater
- Water Source

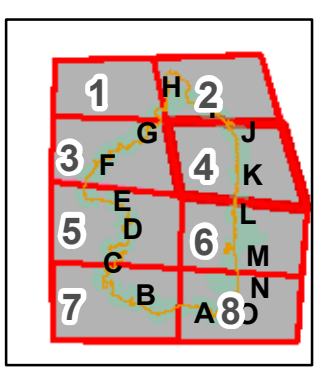
- Division Break
- Branch Break

- Fire Access Roads
- Uncontrolled Fire Edge
- Completed Line
- bridges\_NAD83
- Refuge Islands
- USFS
- John Bethea SF
- Wilderness
- ONWR Boundary
- Swamps Edge Break



Miles

**Page 4**  
GFC Type 2 GIS Team



82°39'W

82°36'W

82°33'W

82°30'W

82°27'W

82°24'W

82°21'W

82°18'W

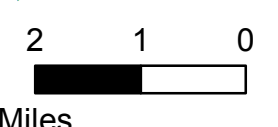
82°15'W

**West Mims Fire**  
 GA-OKR 017006  
 5/2/2017  
 100,517ac.NAD1983  
 @ 5/1/2017 2328 hr

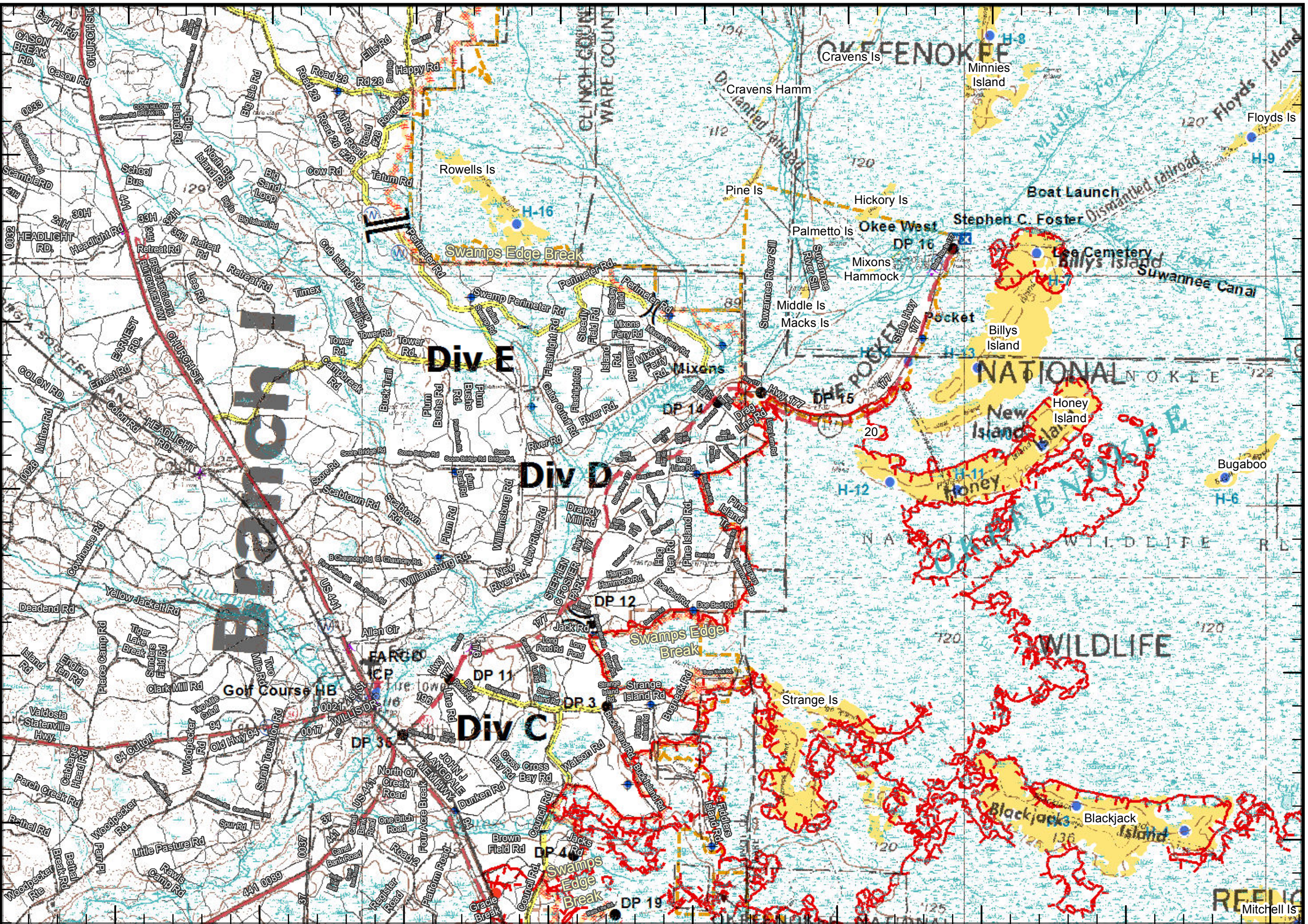
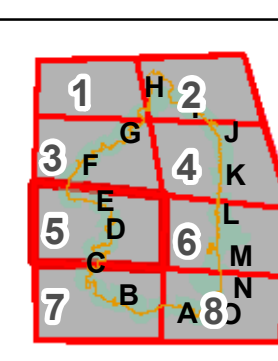
- Aerial Hazard
- Dip Site
- Drop Point
- Fire Origin
- Helibase
- Helispot
- Hot Spot
- Incident Command Post
- Mobile Weather Unit
- Pump
- Repeater
- Water Source

- Division Break
- Branch Break

- Fire Access Roads
- Uncontrolled Fire Edge
- Completed Line
- bridges\_NAD83
- Refuge Islands
- USFS
- John Bethea SF
- Wilderness
- ONWR Boundary
- Swamps Edge Break



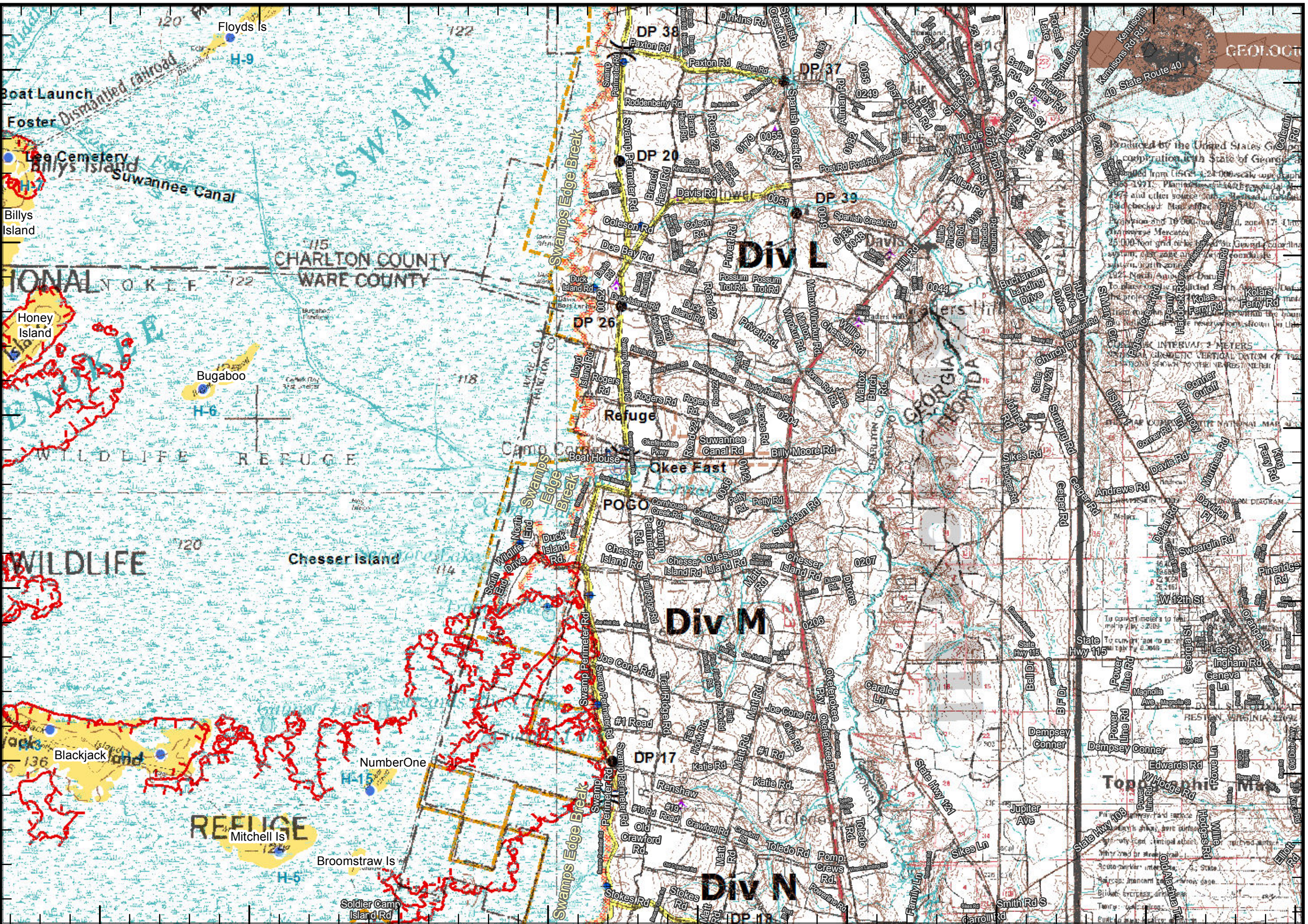
**Page 5**  
 GFC Type 2 GIS Team



30°51'N  
 30°48'N  
 30°45'N  
 30°42'N  
 30°39'N

82°18'W 82°15'W 82°12'W 82°9'W 82°6'W 82°3'W 82°0'W 81°57'W

30°51'N 30°48'N 30°45'N 30°42'N 30°39'N

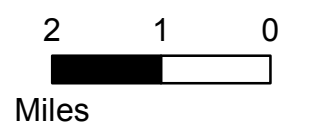


West Mims Fire  
GA-OKR 017006  
5/2/2017  
100,517ac.NAD1983  
@ 5/1/2017 2328 hr

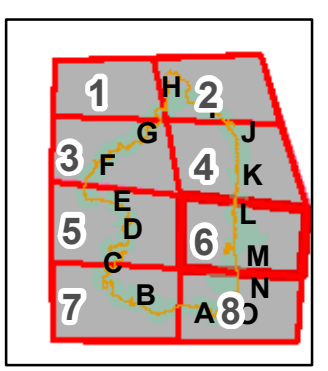
- Aerial Hazard
- Dip Site
- Drop Point
- Fire Origin
- Helibase
- Helispot
- Hot Spot
- Incident Command Post
- Mobile Weather Unit
- Pump
- Repeater
- Water Source

- Division Break
- Branch Break

- Fire Access Roads
- Uncontrolled Fire Edge
- Completed Line
- bridges\_NAD83
- Refuge Islands
- USFS
- John Bethea SF
- Wilderness
- ONWR Boundary
- Swamps Edge Break

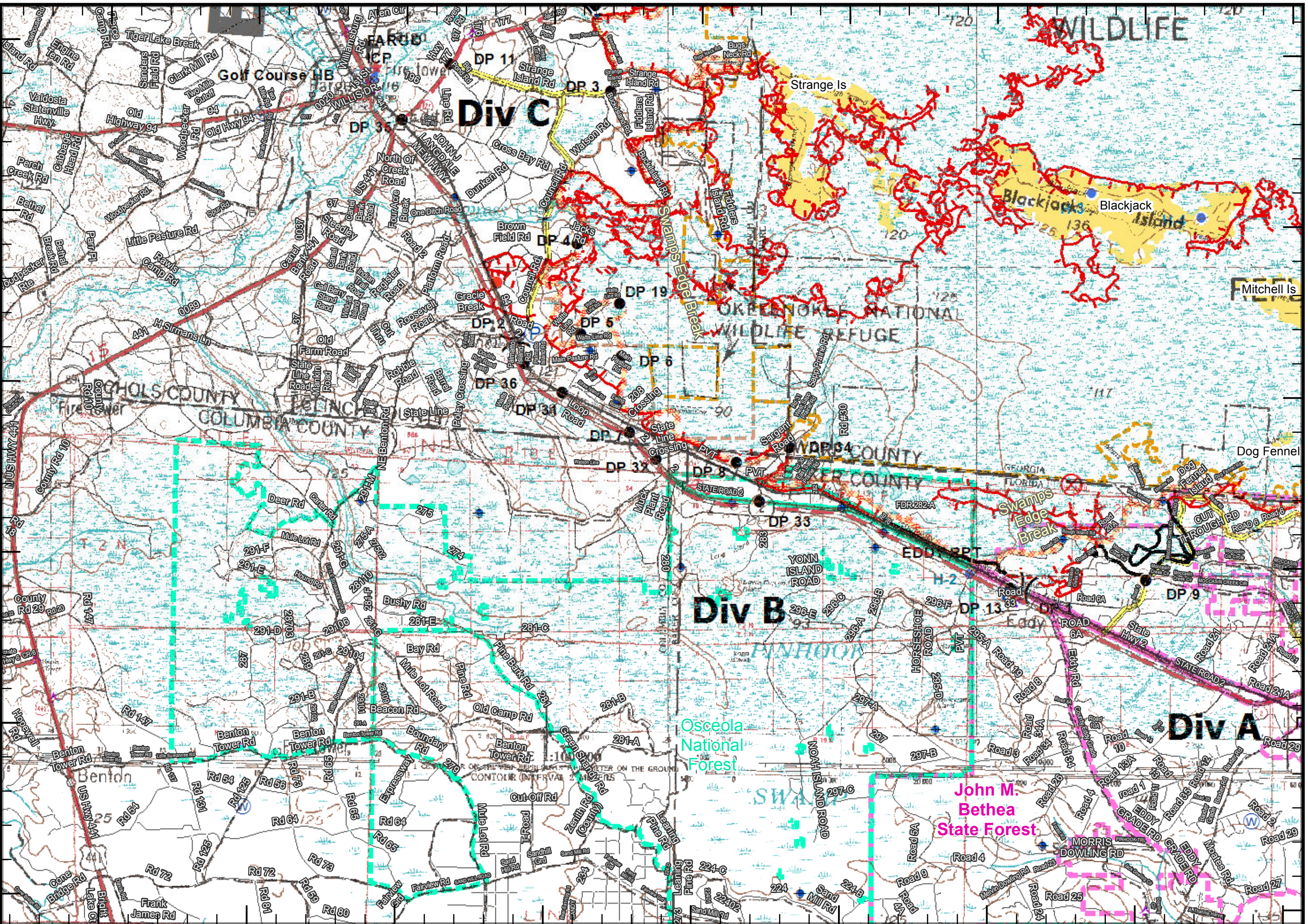


Page 6  
GFC Type 2 GIS Team



82°39'W 82°36'W 82°33'W 82°30'W 82°27'W 82°24'W 82°21'W 82°18'W 82°15'W

30°42'N 30°39'N 30°36'N 30°33'N 30°30'N 30°27'N



West Mims Fire  
GA-OKR 017006  
5/2/2017  
100,517ac.NAD1983  
@ 5/1/2017 2328 hr

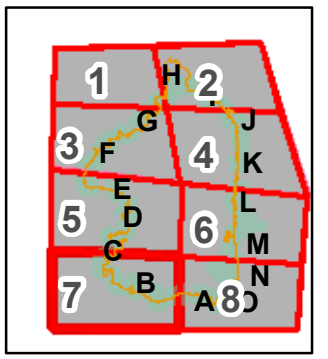
- Aerial Hazard
- Dip Site
- Drop Point
- Fire Origin
- Helibase
- Helispot
- Hot Spot
- Incident Command Post
- Mobile Weather Unit
- Pump
- Repeater
- Water Source
- Division Break
- Branch Break

- Fire Access Roads
- Uncontrolled Fire Edge
- Completed Line
- bridges\_NAD83
- Refuge Islands
- USFS
- John Bethea SF
- Wilderness
- ONWR Boundary
- Swamps Edge Break

INCIDENT MANAGEMENT GOAL FLORIDA DEPARTMENT OF WILDLIFE AND NATURAL RESOURCES US

2 1 0  
Miles

Page 7  
GFC Type 2 GIS Team



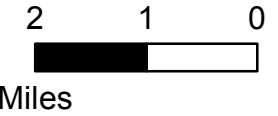


West Mims Fire  
 GA-OKR 017006  
 5/2/2017  
 100,517ac.NAD1983  
 @ 5/1/2017 2328 hr

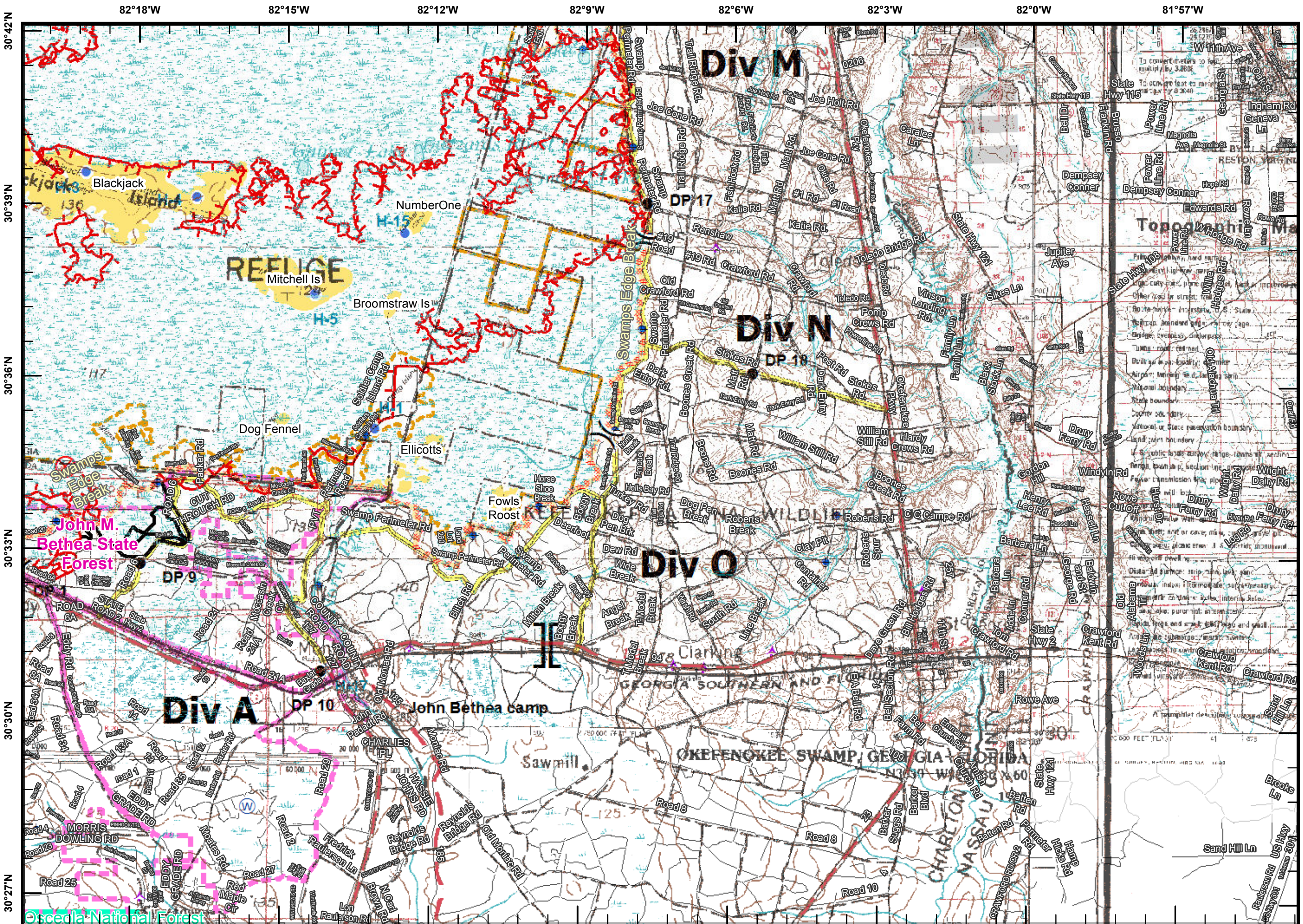
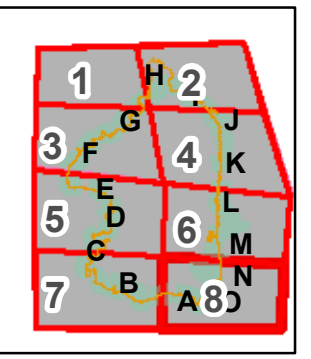
- Aerial Hazard
- Dip Site
- Drop Point
- Fire Origin
- Helibase
- Helispot
- Hot Spot
- Incident Command Post
- Mobile Weather Unit
- Pump
- Repeater
- Water Source

- Division Break
- Branch Break

- Fire Access Roads
- Uncontrolled Fire Edge
- Completed Line
- bridges\_NAD83
- Refuge Islands
- USFS
- John Bethea SF
- Wilderness
- ONWR Boundary
- Swamps Edge Break



Page 8  
 GFC Type 2 GIS Team



30°42'N  
 30°39'N  
 30°36'N  
 30°33'N  
 30°30'N  
 30°27'N

82°18'W 82°15'W 82°12'W 82°9'W 82°6'W 82°3'W 82°0'W 81°57'W

West Mims	Incident Data Points	Label	Latitude	West	Longitude	North
DP-1	Drop Point	DP-1	30	32.62160	82	7.54800
DP-2	Drop Point	DP-2	30	36.85073	82	17.85822
DP-3	Drop Point	DP-3	30	41.25494	82	32.10600
DP-4	Drop Point	DP-4	30	38.57192	82	29.17100
DP-5	Drop Point	DP-5	30	36.96773	82	20.60833
DP-6	Drop Point	DP-6	30	36.59123	82	5.58167
DP-7	Drop Point	DP-7	30	35.26622	82	15.10416
DP-8	Drop Point	DP-8	30	34.75918	82	28.59737
DP-9	Drop Point	DP-9	30	32.78603	82	7.71929
DP-10	Drop Point	DP-10	30	30.92574	82	14.21382
DP-11	Drop Point	DP-11	30	41.69900	82	5.15418
DP12	Drop Point	DP12	30	42.75500	82	22.18801
DP13	Drop Point	DP13	30	32.53500	82	7.75204
DP-14	Drop Point	DP14	30	46.74324	82	26.60088
DP-15	Drop Point	DP15	30	46.93236	82	25.68432
DP-16	Drop Point	DP16	30	46.93236	82	25.68432
DP-17	Drop Point	DP17	30	39.10854	82	7.72410
DP-18	Drop Point	DP-18	30	36.17833	82	7.60015
DP-19	Drop Point	DP-19	30	37.52281	82	20.47050
DP-20	Drop Point	DP-20	30	49.53562	82	19.94815
DP-21	Drop Point	DP-21	31	4.51774	82	24.65464
DP-22	Drop Point	DP-22	31	4.13188	82	35.17621
DP-23	Drop Point	DP-23	31	3.29316	82	38.04565
DP-24	Drop Point	DP-24	31	2.32039	82	34.27047
DP-25	Drop Point	DP-25	31	4.91493	82	7.12543
DP-26	Drop Point	DP-26	30	47.02700	82	6.52574
DP-27	Drop Point	DP-27	31	7.31548	82	5.15871
DP-28	Drop Point	DP-28	31	6.26398	82	39.81175
DP-29	Drop Point	DP-29	31	3.75513	82	39.27116
DP-30	Drop Point	DP-30	31	1.86238	82	39.03462
DP-31	Drop Point	DP-31	30	35.94852	82	33.63322
DP-32	Drop Point	DP-32	30	34.79715	82	34.21358
DP-33	Drop Point	DP-33	30	34.08115	82	25.20424
DP-34	Drop Point	DP-34	30	35.04001	82	16.61319
DP-35	Drop Point	DP-35	30	40.70253	82	15.30361
DP-37	Drop Point	DP-37	30	50.94824	82	15.06342
DP-38	Drop Point	DP-38	30	51.46919	82	7.86281
DP-39	Drop Point	DP-39	30	48.66400	82	6.53136
DP-36	Drop Point	DP36	30	36.46194	82	30.53136
Pogo HB	Helibase	Pogo HB	30	44.21802	82	32.70661
Golf Course	Helibase	Golf Course	30	41.42000	82	7.15982
SolHel	Helisport	H-1	30	35.16033	82	7.19264
Eddy	Helisport	H-2	30	32.85007	82	4.71063
BJ-W	Helisport	H-3	30	39.57093	82	1.16282
BJ-E	Helisport	H-4	30	39.15758	81	59.17394
Mitch	Helisport	H-5	30	37.49934	81	59.38713
Bug	Helisport	H-6	30	45.50424	82	0.46871
Bill-N	Helisport	H-7	30	49.49226	82	4.60862
Minnies	Helisport	H-8	30	53.38788	82	2.27744
Floyds	Helisport	H-9	30	51.62221	82	2.87396
HonNth	Helisport	H-10	30	46.04284	82	2.15455
HonMid	Helisport	H-11	30	45.21770	82	12.43378
HonSth	Helisport	H-12	30	45.34615	82	17.80308
Bill-S	Helisport	H-13	30	47.41952	82	29.97132
PocHel	Helisport	H-14	30	47.50794	82	33.08405
NumOne	Helisport	H-15	30	38.57104	82	37.75457
Rowell	Helisport	H-16	30	49.89720	82	39.97443
H-Betha	Helisport	H-17	30	30.95627	82	40.35791
Okee West	Repeater	Okee West	30	49.30733	82	16.22252
EDDY RPT	Repeater	EDDY RPT	30	32.53500	82	14.51287
Okee East	Repeater	Okee East	30	44.42533	82	11.35735
Okee North	Repeater	Okee North	31	7.10379	82	8.57809
NIFC-2	Repeater	NIFC-2	30	36.85073	82	23.81333